

# Pro-face

The easy way to Interface

## 2009 Corporate and Product

Version 2

**AGP3000 / AST3000 Series**  
Graphic Operator Interface

**AGP3000 Series**  
Touch PLC

**LT3000 Series**  
Compact Touch PLC

**PS3000 / APL3000 Series**  
Industrial Panel Computers

**FP3000 Series**  
Industrial Flat Panel Monitors

**Pro-face Software**  
"All-in-one" Software

**Pro-face®**

# Innovation 3000

The advent of the 3000 Series heralds a revolution in production environments. Oriented around its displays, it gives an enormous boost to "Visualisation" on the manufacturing floor. The 3000 Series was born to meet the ever-increasing demands from markets. Ever since we released the world's first programmable display, Pro-face has continued to be a leader in providing a product lineup featuring the latest technology and functions. Revolutionise your production with the new

**Revolutionize your production with the new "Innovation 3000".**



**AGP3000 SERIES**  
A New Concept In  
Graphic Operator Interfaces

**PS3000 SERIES**  
Industrial Personal Computer

**LT3000 SERIES**  
Graphic Logic Controllers

**FP3000 SERIES**  
Industrial Flat Panel Displays



# Contents



Graphic Operator Interface

Page 03

**AGP**  
3000 SERIES  
Multi-Driver-Touch Terminal



Page 07

**AGP**  
3000H SERIES  
Handy-Multi-Driver Touch Terminal



Page 08

**AST**  
3000 SERIES  
Low-cost-Multi-Driver Touch Terminal



Touch PLC

Page 09

**AGP**  
3000 SERIES  
Touch PLC-FieldBus I/Os



Page 10

**LT**  
3000 SERIES  
Compact-Touch PLC



Industrial PCs

Page 11

**PS**  
3000 SERIES  
Compact-Panel PC



Page 11

**APL**  
3000 SERIES  
Modular-Industrial PC



Page 12

**FP**  
3000 SERIES  
Industrial Flat Panel Monitor



Software

Page 15

**GP-Pro EX**  
"All-in-one" HMI Software

Page 21

**WinGP**  
Runtime engine

Page 21

**GP-Viewer EX**  
Remote monitoring software

Page 22

**Pro-Server EX**  
Data management software



Powerful and easy to use



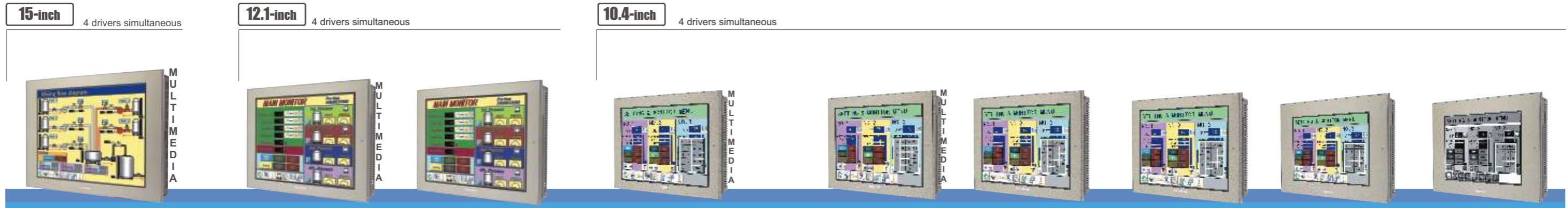
АРКТИКА – официальный дистрибьютор

**Pro-face**  
Human Machine Interface

# Multi-driver Touch Terminal

AGP3000

20 models Multimedia or Standard...6 screen sizes.



**15-inch** 4 drivers simultaneous

**12.1-inch** 4 drivers simultaneous

**10.4-inch** 4 drivers simultaneous

**AGP-3750T**  
 AGP3750-T1-AF AC 100-240V  
 AGP3750-T1-D24 DC24V  
 CE (UL) (UL) (UL)  
 ■ TFT Colour XGA  
 ■ 1024 x 768 pixels  
 ■ 65 536 colours  
 ■ 8 MB FEPRM  
 ■ 395W x 294H x 60D

SIO 2 ch	Ethernet
Expansion unit	USB x 2
VM unit optional	CF card
AUX / Sound Out	
Video In	Sound In

**AGP-3650T**  
 AGP3650-T1-AF AC 100-240V  
 CE (UL) (UL) (UL)  
 ■ TFT Colour SVGA  
 ■ 800 x 600 pixels  
 ■ 65 536 colours  
 ■ 8 MB FEPRM  
 ■ 313W x 239H x 56D

SIO 2 ch	Ethernet
Expansion unit	USB x 2
VM unit optional	CF card
AUX / Sound Out	
Video In	Sound In

**AGP-3600T**  
 AGP3600-T1-D24 DC24V  
 CE (UL) (UL) (UL)  
 ■ TFT Colour SVGA  
 ■ 800 x 600 pixels  
 ■ 65 536 colours  
 ■ 8 MB FEPRM  
 ■ 313W x 239H x 56D

SIO 2 ch	Ethernet
Expansion unit	USB x 2
VM unit optional	CF card
AUX / Sound Out	

**AGP-3560T**  
 AGP3560-T1-AF AC 100-240V  
 CE (UL) (UL) (UL)  
 ■ TFT Colour SVGA  
 ■ 800 x 600 pixels  
 ■ 65 536 colours  
 ■ 8 MB FEPRM  
 ■ 270.5W x 212.5H x 57D

SIO 2 ch	Ethernet
Expansion unit	USB x 2
VM unit optional	CF card
AUX / Sound Out	
Video In	Sound In

**AGP-3550T**  
 AGP3550-T1-AF AC 100-240V  
 CE (UL) (UL) (UL)  
 ■ TFT Colour VGA  
 ■ 640 x 480 pixels  
 ■ 65 536 colours  
 ■ 8 MB FEPRM  
 ■ 270.5W x 212.5H x 57D

SIO 2 ch	Ethernet
Expansion unit	USB x 2
VM unit optional	CF card
AUX / Sound Out	
Video In	Sound In

**AGP-3510T**  
 AGP3510-T1-AF AC 100-240V  
 CE (UL) (UL) (UL)  
 ■ TFT Colour SVGA  
 ■ 800 x 600 pixels  
 ■ 65 536 colours  
 ■ 8 MB FEPRM  
 ■ 270.5W x 212.5H x 57D

SIO 2 ch	Ethernet
Expansion unit	USB x 2
VM unit optional	CF card
AUX / Sound Out	

**AGP-3500T**  
 AGP3500-T1-D24 DC24V  
 CE (UL) (UL) (UL)  
 ■ TFT Colour VGA  
 ■ 640 x 480 pixels  
 ■ 65 536 colours  
 ■ 8 MB FEPRM  
 ■ 270.5W x 212.5H x 57D

SIO 2 ch	Ethernet
Expansion unit	USB x 2
VM unit optional	CF card
AUX / Sound Out	

**AGP-3500S**  
 AGP3500-S1-D24 DC24V  
 CE (UL) (UL) (UL)  
 ■ STN Colour VGA  
 ■ 640 x 480 pixels  
 ■ 4096 colours  
 ■ 8 MB FEPRM  
 ■ 313W x 239H x 56D

SIO 2 ch	Ethernet
Expansion unit	USB x 2
CF card	
AUX / Sound Out	

**AGP-3500L**  
 AGP3500-L1-D24 DC24V  
 CE (UL) (UL) (UL)  
 ■ BW VGA  
 ■ 640 x 480 pixels  
 ■ 16 shades of grey  
 ■ 8 MB FEPRM  
 ■ 313W x 239H x 56D

SIO 2 ch	Ethernet
Expansion unit	USB x 2
CF card	
AUX / Sound Out	

**7.5-inch** 4 drivers simultaneous

**5.7-inch** 2 drivers simultaneous

**3.8-inch** 2 drivers simultaneous



**AGP-3450T**  
 AGP3450-T1-D24 DC24V  
 CE (UL) (UL) (UL)  
 ■ TFT Colour VGA  
 ■ 640 x 480 pixels  
 ■ 65 536 colours  
 ■ 8 MB FEPRM  
 ■ 215W x 170H x 60D

SIO 2 ch	Ethernet
Expansion unit	USB x 1
CF card	
AUX / Sound Out	
Video In	Sound In

**AGP-3400T**  
 AGP3400-T1-D24 DC24V  
 CE (UL) (UL) (UL)  
 ■ TFT Colour VGA  
 ■ 640 x 480 pixels  
 ■ 65 536 colours  
 ■ 8 MB FEPRM  
 ■ 215W x 170H x 60D

SIO 2 ch	Ethernet
Expansion unit	USB x 1
CF card	
AUX / Sound Out	

**AGP-3400S**  
 AGP3400-S1-D24 DC24V  
 CE (UL) (UL) (UL)  
 ■ STN Colour VGA  
 ■ 640 x 480 pixels  
 ■ 4096 colours  
 ■ 8 MB FEPRM  
 ■ 215W x 170H x 60D

SIO 2 ch	Ethernet
Expansion unit	USB x 1
CF card	
AUX / Sound Out	

**AGP-3300T**  
 AGP3300-T1-D24 DC24V  
 CE (UL) (UL) (UL)  
 ■ TFT Colour QVGA  
 ■ 320 x 240 pixels  
 ■ 65 536 colours  
 ■ 6 MB FEPRM  
 ■ 167.5W x 135H x 59.5D

SIO 2 ch	Ethernet
Expansion unit	USB x 1
CF card	

**AGP-3300S**  
 AGP3300-S1-D24 DC24V  
 CE (UL) (UL) (UL)  
 ■ STN Colour QVGA  
 ■ 320 x 240 pixels  
 ■ 4096 colours  
 ■ 6 MB FEPRM  
 ■ 167.5W x 135H x 59.5D

SIO 2 ch	Ethernet
Expansion unit	USB x 1
CF card	

**AGP-3300L**  
 AGP 3300-L1-D24 DC24V  
 CE (UL) (UL) (UL)  
 ■ B/W QVGA  
 ■ 320 x 240 pixels  
 ■ 16 shades of grey  
 ■ 6 MB FEPRM  
 ■ 167.5W x 135H x 59.5D

SIO 2 ch	Ethernet
Expansion unit	USB x 1
CF card	

**AGP-3301S**  
 AGP3301-S1-D24 DC24V  
 CE (UL) (UL) (UL)  
 ■ STN Colour QVGA  
 ■ 320 x 240 pixels  
 ■ 4096 colours  
 ■ 6 MB FEPRM  
 ■ 167.5W x 135H x 59.5D

SIO 2 ch	Ethernet
Expansion unit	USB x 1
CF card	

**AGP-3301L**  
 AGP 3301-L1-D24 DC24V  
 CE (UL) (UL) (UL)  
 ■ B/W QVGA  
 ■ 320 x 240 pixels  
 ■ 16 shades of grey  
 ■ 6 MB FEPRM  
 ■ 167.5W x 135H x 59.5D

SIO 2 ch	Ethernet
Expansion unit	USB x 1
CF card	

**AGP-3302B**  
 AGP3302-B1-D24 DC24V  
 CE (UL) (UL) (UL)  
 ■ Blue Mode QVGA  
 ■ 320 x 240 pixels  
 ■ 16 shades of blue  
 ■ 6 MB FEPRM  
 ■ 167.5W x 135H x 59.5D

SIO 2 ch	Ethernet
Expansion unit	USB x 1

**AGP-3200T**  
 AGP3200-T1-D24 DC24V  
 CE (UL) (UL) (UL)  
 ■ TFT Colour QVGA  
 ■ 320 x 240 pixels  
 ■ 256 colours  
 ■ 6 MB FEPRM  
 ■ 130W x 104H x 40D

SIO 1 ch	Ethernet
USB x 1	

**AGP-3200A**  
 AGP3200-A1-D24 DC24V  
 CE (UL) (UL) (UL)  
 ■ Amber QVGA  
 ■ 320 x 240 pixels  
 ■ 8 shades  
 ■ 6 MB FEPRM  
 ■ 130W x 104H x 40D

SIO 1 ch	Ethernet
USB x 1	

# AGP3000 : Key Features

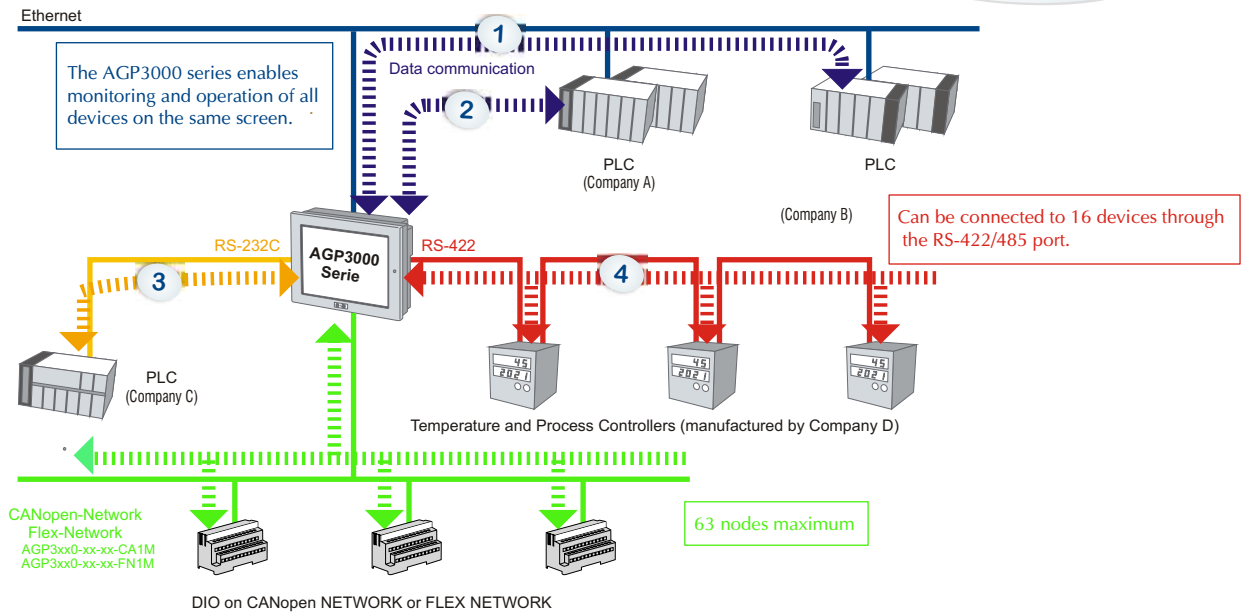
AGP3000

## Communicate with up to four types of device

Communicate simultaneously with four devices and manage all information with one unit. Pro-face is the leader in the number of communication drivers supported.

4 drivers simultaneous

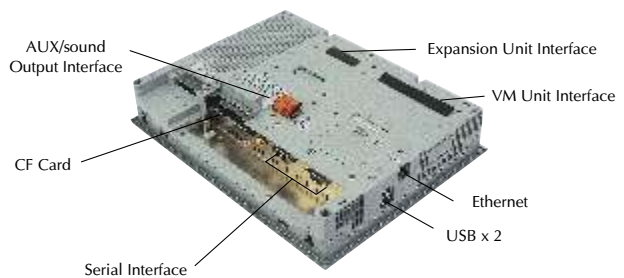
\*5.7 inch models enable simultaneous communication with up to two devices.



## More interfaces are available

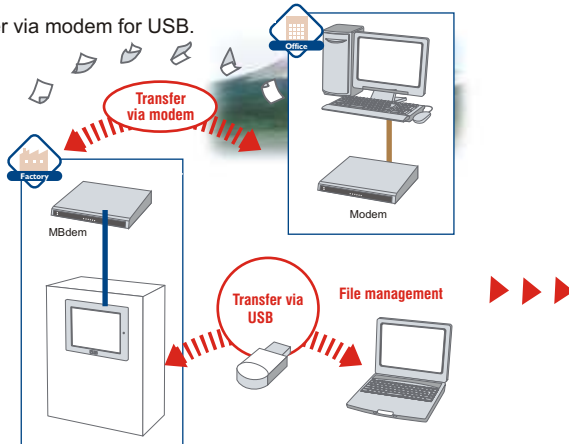
These interfaces simplify connection to existing systems as well as system additions and future expansion.

Note: Available interfaces vary by Model. The photo shows the interfaces for the AGP-3650T (AC). For a list of the compliant models, please refer to our website.



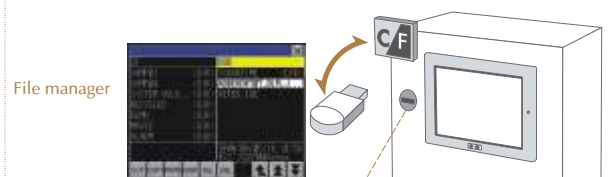
## Screen data transfer

Screen data transfer via modem for USB.



## File management

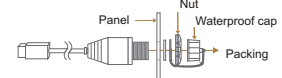
- . USB -> flash memory
- . USB -> CF card .



**Applications**  
Numerous applications are available, including the following:

- Transfer screen data.
- Collect log data.
- Change recipes.
- Manage Movie files.

Attach a USB cable to the readily accessible panel-mounted USB port (CA5-USBEXT-0)



# Driver List

AGP3000 Series

## ■ PLCs

Manufacturer	Driver name	GP Pro EX		Device Monitor	Pass Through
		AGP 3000	Win GP		
Siemens AG	SIMATIC S7 3964(R)RK512	●	●	●	●
	SIMATIC S7 MPI Direct	●	● <sup>(*)</sup>	●	●
	SIMATIC S7 Ethernet	●	●	●	
	SIMATIC S5 CPU Direct	●	●	●	
Schneider Electric	MODBUS SIO Master	●	●	●	
	MODBUS TCP Master	●	●	●	
	Uni-Telway	●	●	●	
	MODBUS Slave (TCP/SIO)	●	●	●	
Beckhoff	ADS driver	●	●	● <sup>(*)</sup>	
Rockwell Automation	DF1	●	●	●	●
	EtherNet / IP	●	●	● <sup>(*)</sup>	
	DH-485	●	●	●	
OMRON	C/CV Series HOST Link	●	●	●	
	CS/CJ Series Ethernet	●	●	●	●
	CS/CJ Series HOST Link	●	●	●	●
Mitsubishi	A Series CPU Direct	●	●	●	●
	A Series Ethernet	●	●	●	
	A Series Computer Link	●	●	●	
	FX Series CPU Direct	●	●	●	●
	FX Series Computer Link	●	●	●	
	FX Series Ethernet	●	●	●	
	Q Series CPU Direct	●	●	●	●
	Q Series QnU CPU Ethernet	●	●	●	
	Q/QnA Serial Communication	●	●	●	
	Q/QnA Series Ethernet	●	●	●	
	Q/QnA Series CPU Direct	●	●	●	●
	QUTE Series CPU Direct	●	●	●	●
Mitsubishi Heavy Ind.	DIASYS Netmation MODBUS TCP	●	●	●	
Saia Burgess	SAIA S-Bus SIO	●	●	●	
Keyence	KV-700/1000 Series CPU Direct	●	●	●	
	KV-700/1000 Series Ethernet	●	●	●	
	KV Series CPU Direct	●	●	●	
GE Fanuc Aut.	Series 90 Ethernet	●	●	●	
	Series 90-30/70 SNP	●	●	●	
	Series 90-30/70 SNP-X	●	●	●	
Fuji Electric	MICREX-F Series SIO	●	●	●	
	MICREX-SX Series SIO	●	●	●	
	MICREX-SX Series Ethernet	●	●	●	
Yasukawa	MEMOBUS SIO	●	●	●	
	MEMOBUS Ethernet	●	●	●	
	MP Series SIO (Extension)	●	●	●	●
Hitachi Indus. Equipment Systems Co.	S10V Series Ethernet	●	●	●	
	S10V Series SIO	●	●	●	
Hitachi	S10V Series Ethernet	●	●	●	
	S10 Series SIO	●	●	●	
Matsushita (Panasonic)	FP Series Computer Link SIO	●	●	●	
Yokogawa	Personal computer Link SIO	●	●	●	●
	Personal computer Link Ethernet	●	●	●	●
JTEKT	TOYOPUC CMP-LINK SIO	●	●	●	
	TOYOPUC CMP-LINK Ethernet	●	●	●	
SHARP	JW Series Computer Link SIO	●	●	●	
	JW Series Computer Link Ethernet	●	●	●	
LS Industrial systems	MASTER-K Series Cnet	●	●	●	
	XGT Series FENet	●	●	●	
	XGT Series Cnet	●	●	●	

(\*) WinGP needs the external adapter 700-881-MPI11 [MPI Ethernet Adapter (NETLink PRO)].

(\*) Variables are not supported for monitoring devices.

## ■ PLCs

Manufacturer	Driver name	GP Pro EX		Device Monitor	Pass Through
		AGP 3000	Win GP		
Meidensha	UNISEQUE SERIES Ethernet	●	●	●	
Fanuc Ltd	Power mate Series	●	●	●	
Toshiba Machine Co	PROVISOR TC200	●	●	●	
TOSHIBA	Computer Link SIO	●	●	●	
	Computer Link Ethernet	●	●	●	
Koyo Electronics	KOSTAC/ DL series CCM SIO	●	●	●	
	KOSTAC/ DL series modbus TCP	●	●	●	
Fatec Automation Co	FB Series SIO	●	●	●	
Modbus-IDA	General MODBUS RTU / TCP SIO Master	●	●	●	

## ■ Temperature and Process Controllers

Manufacturer	Driver name	GP Pro EX		Device Monitor	Pass Through
		AGP 3000	Win GP		
Omron	Temp.Controller CompoWay/F	●	●	●	
RKC Instrument	Temp.Controller MODBUS SIO	●	●	●	
	Temp.Controller RKC SIO	●	●	●	
Yamatake Shinko Technos	Digital Controller SIO	●	●	●	
	Controller SIO	●	●	●	
Yokagawa Elec.C	Personal computer Link Ethernet	●	●	●	
CHINO Corporation	Temp. Controller MODBUS SIO	●	●	●	
Fuji Electric Systems Co.	Temp. Controller MODBUS SIO	●	●	●	

## ■ Inverter

Manufacturer	Driver name	GP Pro EX		Device Monitor	Pass Through
		AGP 3000	Win GP		
Mitsubishi Elec.Corp	FREQROL Inverter	●	●	●	
YASKAWA Elec.Corp	Inverter SIO	●	●	●	

## ■ Fieldbus

Manufacturer	Driver name	GP Pro EX		Device Monitor	Pass Through
		AGP 3000	Win GP		
PROFIBUS Int.	PROFIBUS DP Slave	●		●	
ODVA	DeviceNet Slave	●		●	
CC Link Partner Ass	CC Link intelligent device	●	●	●	
Modbus- IDA	General MODBUS RTU SIO Master	●	●	●	
	General MODBUS TCP Master	●	●	●	

## ■ Industrial Robot

Manufacturer	Driver name	GP Pro EX		Device Monitor	Pass Through
		AGP 3000	Win GP		
Hyundai Heavy Ind.	Hi4 Robot	●	●	●	
IAI Corporation	ROBO CYLINDER MODBUS SIO	●	●	●	
	X-SEL Controller	●	●	●	

## ■ Other devices

Manufacturer	Driver name	GP Pro EX		Device Monitor	Pass Through
		AGP 3000	Win GP		
Digital Elect.Corp	Memory Link SIO/TCP	●	●	●	
	General SIO/Ethernet <sup>(*)</sup>	●	●		

(\*) A program driver for the send/receive command process by D script





# Handy Touch Terminal

AGP3000H

5.7-inch

2 drivers simultaneous

New range!



## AGP-3310HT

AGP 3310H-T1-D24



- TFT Colour VGA
- 640 x 480 pixels
- 65 536 colours
- 8 MB FEPROM
- 224W x 174H x 87.1D

- SIO ch x 1
- Ethernet
- USB x 1
- CF card

## AGP-3300HS

AGP 3300H-S1-D24



- STN Colour QVGA
- 320 x 240 pixels
- 4096 colours
- 6 MB FEPROM
- 224W x 174H x 87.1D

- SIO ch x 1
- Ethernet
- USB x 1
- CF card

## AGP-3300HL

AGP 3300H-L1-D24



- Monochrome QVGA
- 320 x 240 pixels
- 16 shades of grey
- 6 MB FEPROM
- 224W x 174H x 87.1D

- SIO ch x 1
- Ethernet
- USB x 1
- CF card

## AGP3000H range: Key points

- Designed for superb portability with a lightweight, easy-to-use cable.
- Includes a practical and high speed Ethernet port for data handling and networking configuration.
- Designed with a focus on safety.
- High-resolution 5.7-inch VGA display available.



- TFT colour LCD  
640 X 480 VGA
- STN colour LCD  
320 x 240 QVGA
- Monochrome LCD  
320 x 240 QVGA



ID control function located on the adapter gives the possibility to install many adapters on production line and check on which adapter the Handy is connected.

## Emergency Stop Switch

The emergency stop switch securely stops the machine when a circuit fault or other emergency occurs.

The E-stop button activate 2 positive opening safety contacts (NF) and 1 auxiliary contact (NO)



For non safety application, the color of the switch can be selected between grey or uncolored: The switch is removable

## Three position device

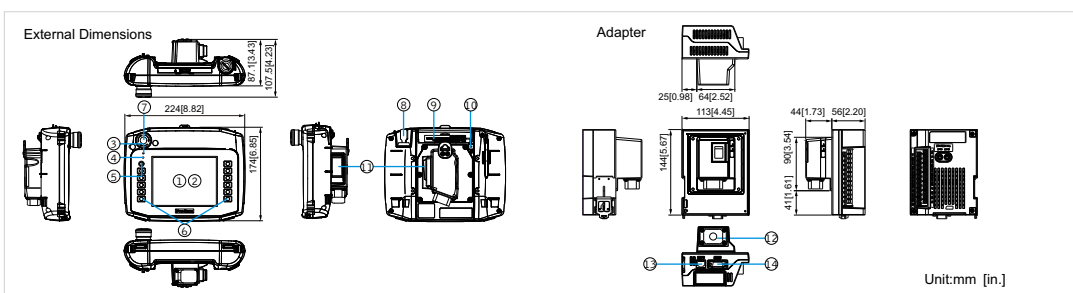
The Handy Panel is equipped with an ergonomical three position device necessary during trouble shooting and testing. The ready signal is given only in distant middle position.



- Open OFF 2 positive opening safety contacts provide enhanced safety.
- Middle position ON
- Closed OFF

The key switch allows you to move the device without triggering the emergency stop.

## Dimensions



# Ultra-Compact Touch Terminal

AST3000

**3.8-inch**

2 drivers simultaneous



## AST-3201A

AST3201-A1-D24 DC24V

- Amber/red QVGA
- 320 x 240 pixels
- 8 shades
- 6 MB
- 130W x 104H x 40D

USB

SIO 1 x RS232 SIO 1 x RS422/485

## AST-3211A

AST3211-A1-D24 DC24V

- Amber/red QVGA
- 320 x 240 pixels
- 8 shades
- 6 MB
- 130W x 104H x 40D

USB

SIO 1 x RS232 SIO 1 x RS485 compatible MPI

### Accommodates USB data storage

You can easily transport data with commercially available USB storage media.

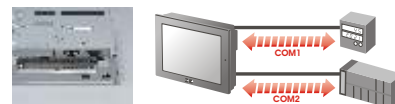


The optional USB cable offers greater data management.



### SIO 2ch serial ports provided as standard

- AST3000 can communicate simultaneously with devices such as PLC, temperature and process controllers.
- COM1:RS-232C COM2:RS-422/485

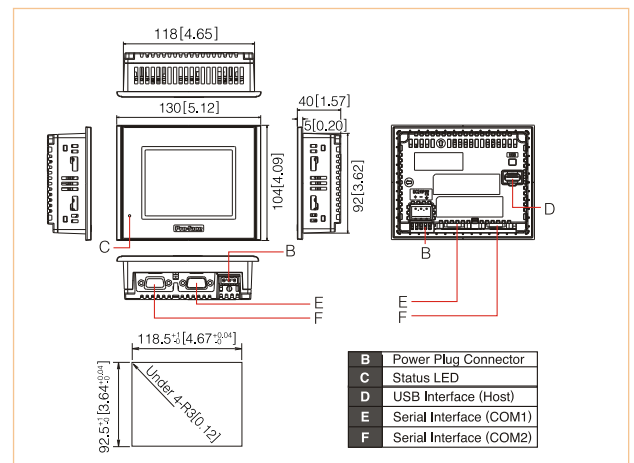


### Device Monitor

- The PLC device data clearly appears on the screen.
- Monitoring function.



### Ultra-compact dimensions





# Touch PLC

## AGP3000

Fusion of Graphic Operator and control functions.

**Control functions**  
 You can easily add a variety of control devices.  
 For the DIO type, you can directly connect various components such as buttons and lamps. In addition the FLEX NETWORK type allows space-saving connections with less wiring.

**DIO type (-D81C)**  
 DIO (sink) type: 6 inputs/2 outputs  
 DIO (source) type: 6 inputs/2 outputs

**CANopen Network type (-CA1M)**  
 Maximum number of expandible I/O:  
 512 bit I/O  
 128 integral I/O

**Flex Network type (-FN1M)**  
 Maximum number of expandible I/O:  
 512 bit I/O  
 128 integral I/O

**Opening toward various PLCs**  
 Every protocol available on the AGP series can be integrated into the LADDER.



**12.1-inch** 4 drivers simultaneous

**10.4-inch** 4 drivers simultaneous

**7.5-inch** 4 drivers simultaneous

**AGP-3600T**  
 AGP3600-T1-D24-D81C  
 AGP3600-T1-D24-CA1M  
 AGP3600-T1-D24-FN1M

CE, UL, cUL, DC24V

- TFT Colour SVGA
- 800 x 600 pixels
- 65 536 colours
- 8 MB FEPROM
- 313W x 239H x 56D

SIO 2 ch, Ethernet, Expansion Unit, USB x 2, VM unit optional, CF card, AUX / Sound Out, D81C: DIO, CA1M: CANopen Network, FN1M: Flex Network

**AGP-3500T**  
 AGP3500-T1-D24-D81C  
 AGP3500-T1-D24-CA1M  
 AGP3500-T1-D24-FN1M

CE, UL, cUL, DC24V

- TFT Colour VGA
- 640 x 480 pixels
- 65 536 colours
- 8 MB FEPROM
- 270.5W x 212.5H x 57D

SIO 2 ch, Ethernet, Expansion Unit, USB x 2, VM unit optional, CF card, AUX / Sound Out, D81C: DIO, CA1M: CANopen Network, FN1M: Flex Network

**AGP-3500S**  
 AGP3500-S1-D24-D81C  
 AGP3500-S1-D24-CA1M

CE, UL, cUL, DC24V

- STN Colour VGA
- 640 x 480 pixels
- 4096 colours
- 8 MB FEPROM
- 313W x 239H x 56D

SIO 2 ch, Ethernet, Expansion Unit, USB x 2, CF card, AUX / Sound Out, D81C: DIO, CA1M: CANopen Network

**AGP-3500L**  
 AGP3500-L1-D24-D81C

CE, UL, cUL, DC24V

- B/W VGA
- 640 x 480 pixels
- 16 shades of grey
- 65 536 colours
- 8 MB FEPROM
- 313W x 239H x 56D

SIO 2 ch, Ethernet, Expansion Unit, USB x 1, CF card, AUX / Sound Out, D81C: DIO, CA1M: CANopen Network, FN1M: Flex Network

**AGP-3400T**  
 AGP3400-T1-D24-D81C  
 AGP3400-T1-D24-CA1M  
 AGP3400-T1-D24-FN1M

CE, UL, cUL, DC24V

- TFT Colour VGA
- 640 x 480 pixels
- 65 536 colours
- 8 MB FEPROM
- 215W x 170H x 60D

SIO 2 ch, Ethernet, Expansion Unit, USB x 1, CF card, AUX / Sound Out, D81C: DIO, CA1M: CANopen Network, FN1M: Flex Network

**AGP-3400S**  
 AGP3400-S1-D24-D81C  
 AGP3400-S1-D24-CA1M

CE, UL, cUL, DC24V

- STN Colour VGA
- 640 x 480 pixels
- 4096 colours
- 8 MB FEPROM
- 215W x 170H x 60D

SIO 2 ch, Ethernet, Expansion Unit, USB x 1, CF card, AUX / Sound Out, D81C: DIO, CA1M: CANopen Network

**5.7-inch** 2 drivers simultaneous



**AGP-3300T**  
 AGP3300-T1-D24-D81C  
 AGP3300-T1-D24-CA1M  
 AGP3300-T1-D24-FN1M

CE, UL, cUL, DC24V

- TFT Colour QVGA
- 320 x 240 pixels
- 65 536 colours
- 6 MB FEPROM
- 167.5W x 135H x 59.5D

SIO 2 ch, Ethernet, Expansion Unit, USB x 1, CF card, D81C: DIO, CA1M: CANopen Network, FN1M: Flex Network

**AGP-3300S**  
 AGP3300-S1-D24-D81C  
 AGP3300-S1-D24-CA1M

CE, UL, cUL, DC24V

- STN Colour QVGA
- 320 x 240 pixels
- 4096 colours
- 6 MB FEPROM
- 167.5W x 135H x 59.5D

SIO 2 ch, Ethernet, Expansion Unit, USB x 1, CF card, D81C: DIO, CA1M: CANopen Network

**AGP-3300L**  
 AGP3300-L1-D24-D81C  
 AGP3300-L1-D24-CA1M  
 AGP3300-L1-D24-FN1M

CE, UL, cUL, DC24V

- B/W QVGA
- 320 x 240 pixels
- 16 shades of grey
- 6 MB FEPROM
- 167.5W x 135H x 59.5D

SIO 2 ch, Ethernet, Expansion Unit, USB x 1, CF card, D81C: DIO, CA1M: CANopen Network, FN1M: Flex Network

**CANopen Slave Unit** *New!*

**HTB1C0DM9LP**  
 - 12 inputs  
 - 8 outputs  
 (6 Relay output + 2 source output)

7 EX modules max.

**Add on I/O modules**

**Output Modules**

EXM-DRA8RT 8 point relay output  
 EXM-DRA16RT 16 point relay output  
 EXM-DDO8UT 8 point sink output  
 EXM-DDO16UK 16 point sink output  
 EXM-DDO8TT 8 point source output  
 EXM-DDO16TK 16 point source output  
 EXM-DDI8DT 8 point input sink/source  
 EXM-DDI16DT 16 point input sink/source

**Input Modules**

**Input/output Mixed Modules**

EXM-DMM8DRT 4 point input / 4 point relay output sink/source

**Analog Module**

EXM-AMI2HT 2 ch analog input  
 EXM-ALM3LT Thermocouple x 2 ch Pt100 input/ 1ch analog output  
 EXM-AMM3HT 2 ch analog input / 1 ch analog output  
 EXM-AMO1HT 1 ch analog output

**Flex Network**

**32 points Sink/Source**

FN-XY16SC41 16 point sink/source input- 24V 16 point source output - 24 V - 0,2A  
 FN-X32TS41 32 point sink/source input - 24V -

**64 points Sink/Source**

FN-XY32SKS41 32 point sink/source input- 24V 32 point sink output - 24 V - 0,2A

**2 points analog**

FN-AD02AH41 2 analog inputs- 12 bits 0..10V, 0..20mA, 4..20mA  
 FN-DA02AH41 2 analog outputs- 12 bits 0..10V, 0..20mA, 4..20mA

**4 points analog**

FN-AD04AH11 4 analog inputs- 12 bits 0..10V, 0..20mA, 4..20mA  
 FN-DA04AH11 4 analog outputs- 12 bits 0..10V, 0..20mA, 4..20mA

# Touch PLC Compact

LT3000

5.7-inch

3.8-inch



## LT-3300S

LT3300-S1-D24 DC24V

- STN Colour QVGA
- 320 x 240 pixels
- 4096 colours
- 6 MB FEPROM
- 167.4W x 135H x 77.6D

- USB x 1
- SIO 1 ch
- Ethernet
- 16 I / 16 O
- CANopen master (option)
- I/O EXM - max 3 modules (option)

## LT-3300L

LT3300-L1-D24 DC24V

- Monochrome QVGA
- 320 x 240 pixels
- 16 shades of grey
- 6 MB FEPROM
- 167.4W x 135H x 77.6D

- USB x 1
- SIO 1 ch
- Ethernet
- 16 I / 16 O
- CANopen master (option)
- I/O EXM - max 3 modules (option)

## LT-3301L

LT3301-L1-D24 DC24V

- Monochrome QVGA
- 320 x 240 pixels
- 16 shades of grey
- 6 MB FEPROM
- 167.4W x 135H x 77.6D

- USB x 1
- SIO 1 ch
- 16 I / 16 O
- CANopen master (option)
- I/O EXM - max 3 modules (option)

## LT-3201A

LT3201-A1-D24 DC24V

- Amber QVGA
- 320 x 240 pixels
- 8 shades
- 6 MB FEPROM
- 130W x 104H x 76.5D

- USB x 1
- 12 I / 6 O
- CANopen master (option)
- I/O EXM - max 2 modules (option)



### Compact

It is a compact palm sized controller, that efficiently utilises panel space. In addition, it is equipped with a 3.8 inch or 5.7 inch LED touchscreen to display not only messages but also graphical data.

### All-in-one

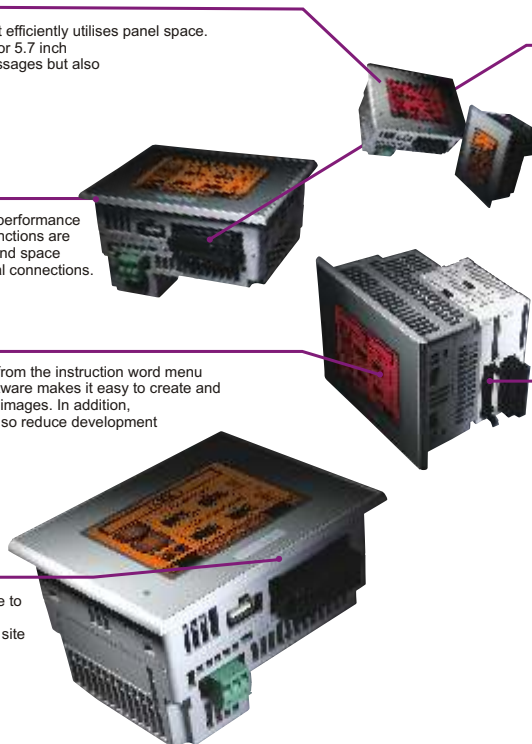
This is a dual function, cost saving high performance device. Display, operation and control functions are integrated into 1 unit that saves wiring and space and also reduces the number of electrical connections.

### Easy to use

By using only drag and drop operations from the instruction word menu compatible GP-Pro EX development software makes it easy to create and edit ladders as well as create and utilise images. In addition, the enhanced debugging function can also reduce development time.

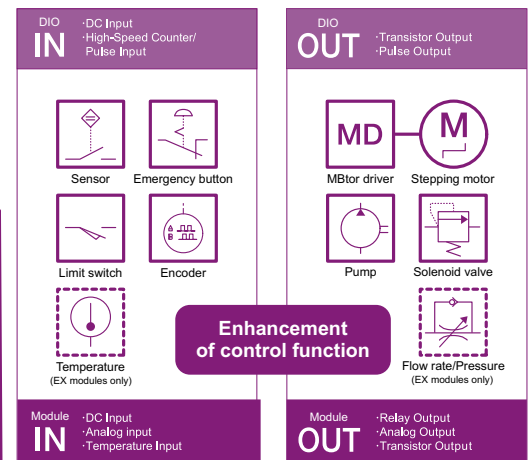
### User-friendly

As a USB interface is built in, it is possible to use USB storage for image transfer and logging, therefore, handling at your work site can be performed without a PC.



### Multiple

Equipped with 12-point DC inputs and 6-point transistor outputs (16 inputs/16 outputs for 5.7inch models), it is compatible with special I/O. With acceleration and deceleration pulse output at a maximum of 65 kHz, and high-speed counter function performing at 100kHz as standard, it has achieved sophisticated control functions. (Possible to use 4-points at maximum)



### Scalability

With the EX module I/F, 2 or 3 sets of 13 types of EX modules can be added on. This enables a high degree of customisation, more than 100 combinations, for a diversity of needs and future expansion.

# Touch IPC Modular

DVD Multi (R/W)  
available

APL3000-	TA	CD2G	4P	2G	XM60	B	
Size	Main Unit Type / Power Supply		CPU	Expansion Slots	Memory	OS (Pre-installed HDD)	Others
9 19" Touch Panel LCD	BA Built-in Computer AC Power Supply	KA Panel Computer with Keypad AC Power Supply	CD2G Core™ Duo 2.0GHz	2P PCI 2 slot	2G 2GB	XM60 Windows® XP ML ver.	D DVD-ROM Drive Unit
7 15" Touch Panel LCD	BD Built-in Computer DC Power Supply	KD Panel Computer with Keypad DC Power Supply	CM18 Celeron™ M440 1.86GHz	4P PCI 4 slot	1G 1GB	NO60 Without OS	B Battery Unit
6 12.1" Touch Panel LCD	TA Panel Computer AC Power Supply				5M 512MB		M Multi DVD Unit
0 Built-in (BOX)	TD Panel Computer DC Power Supply						B M Battery Unit + Multi DVD Drive

19-inch



## APL-3900T

DC24V AC 100.240V CE UL SF

Windows® 2000 Windows® XP Windows® XP Embedded

- CPU: Intel Core Duo 2.0 GHz / Celeron M440 1.86 GHz
- TFT colour SXGA
- 1280 x 1024 pixels
- 262.144 colours
- 512 MB / 1 GB / 2 GB / 4GB DDR
- 2 slots: 460W x 390H x 181.2D  
4 slots: 460W x 390H x 233.2D

SIO 4 ch CF card x 1 USB x 5 RAS port  
DVD-ROM x 1 Sound out Ethernet x 2 PCI X 2 / 4\*

\* The 4 slots version support the Battery unit

15-inch



## APL-3700T

DC24V AC 100.240V CE UL SF

Windows® 2000 Windows® XP Windows® XP Embedded

- CPU: Intel Core Duo 2.0 GHz / Celeron M440 1.86 GHz
- TFT colour XGA
- 1024 x 768 pixels
- 262.144 colours
- 512 MB / 1 GB / 2 GB / 4GB DDR
- 2 slots: 425W x 325H x 165.5D  
4 slots: 425W x 325H x 217.5D

SIO 4 ch CF card x 1 USB x 5 RAS port  
DVD-ROM x 1 Sound out Ethernet x 2 PCI X 2 / 4\*

\* The 4 slots version support the Battery unit

12.1-inch



New range!

## APL-3600T

DC24V AC 100.240V CE UL SF

Windows® 2000 Windows® XP Windows® XP Embedded

- CPU: Intel Core Duo 2.0 GHz / Celeron M440 1.86 GHz
- TFT colour SVGA
- 800 x 600 pixels
- 262.144 colours
- 512 MB / 1 GB / 2 GB / 4GB DDR
- 2 slots: 338W x 286H x 165.1D  
4 slots: 338W x 286H x 217.1D

SIO 4 ch CF card x 1 USB x 5 RAS port  
DVD-ROM x 1 Sound out Ethernet x 2 PCI X 2 / 4\*

\* The 4 slots version support the Battery unit

15-inch



Keypad model

## APL3-700K

DC24V AC 100.240V CE UL SF

Windows® 2000 Windows® XP Windows® XP Embedded

- CPU: Intel Core Duo 2.0 GHz / Celeron M440 1.86 GHz
- TFT colour XGA
- 1024 x 768 pixels
- 262.144 colours
- 512 MB / 1 GB / 2 GB / 4GB DDR
- 2 slots: 488W x 367H x 165.5D  
4 slots: 488W x 367H x 217.5D
- Number of key switches: 74

SIO 4 ch CF card x 1 USB x 5 RAS port  
DVD-ROM x 1 Sound out Ethernet x 2 PCI X 2 / 4\*

\* The 4 slots version support the Battery unit

12.1-inch



Keypad model

## APL-3600K

DC24V AC 100.240V CE UL SF

Windows® 2000 Windows® XP Windows® XP Embedded

- CPU: Intel Core Duo 2.0 GHz / Celeron M440 1.86 GHz
- TFT colour SVGA
- 800 x 600 pixels
- 262.144 colours
- 512 MB / 1 GB / 2 GB / 4GB DDR
- 2 slots: 425W x 325H x 165.5D  
4 slots: 425W x 325H x 217.5D
- Number of key switches: 74

SIO 4 ch CF card x 1 USB x 5 RAS port  
DVD-ROM x 1 Sound out Ethernet x 2 PCI X 2 / 4\*

\* The 4 slots version support the Battery unit

Built-in  
computer



## APL-3000B

DC24V AC 100.240V CE UL SF

Windows® 2000 Windows® XP Windows® XP Embedded

- CPU: Intel Core Duo 2.0 GHz / Celeron M440 1.86 GHz
- 512 MB / 1 GB / 2 GB / 4GB DDR
- 2 slots: 243W x 125.5H x 277D  
4 slots: 243W x 176.5H x 277D

SIO 4 ch CF card x 1 USB x 5 RAS port  
DVD-ROM x 1 Sound out Ethernet x 2 PCI X 2 / 4\*

\* The 4 slots version support the Battery unit



# Touch IPC Compact

PS3000

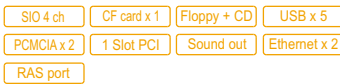
15-inch



## PS-3710A



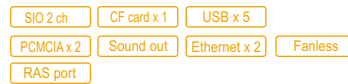
- CPU: Pentium M 1.6 GHz
- TFT colour XGA
- 1024 x 768 pixels
- 16.777.216 colours
- 1 GB / 2 GB DDR
- 395W x 294H x 100D



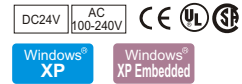
## PS-3711A



- CPU: ULV Celeron M 1 GHz
- TFT colour XGA
- 1024 x 768 pixels
- 16.777.216 colours
- 512 MB / 1 GB DDR
- 395W x 294H x 60D



## PS-3000B / PS-3001B



- CPU: PS3000B = ULV Celeron M 1 GHz  
PS3001B = ULV Celeron M 600 MHz
- 256 MB / 1 GB DDR
- PS3000B = 255W x 164H x 124D  
PS3001B = 255W x 164H x 68.8D



12.1-inch



8.4-inch



## PS-3650A



- CPU Celeron M 1.3 GHz \*
- TFT colour XGA
- 1024 x 768 pixels
- 262.144 colours
- 256 MB / 1 GB DDR
- 313W x 239H x 103D



\*PS3650A-T42 model available 2<sup>nd</sup> quarter 2009:  
- Celeron M 1.5 GHz  
- SIO ch x 2  
- Supporting the Battery unit.

## PS-3651A



- CPU Celeron M 600 MHz\*
- TFT colour XGA
- 1024 x 768 pixels
- 262.144 colours
- 256 MB / 1 GB DDR
- 313W x 239H x 60D



\*PS3651A-T42 model available 2<sup>nd</sup> quarter 2009:  
- Celeron M 1 GHz  
- SIO ch x 2  
- Supporting the Battery unit.

## PS-3450A



- CPU Celeron M 1 GHz
- TFT colour SVGA
- 800 x 600 pixels
- 262.144 colours
- 256 MB / 1 GB
- 230W x 177H x 115D (before slot PCI)



## PS-3451A



- CPU Celeron M 600 MHz
- TFT colour SVGA
- 800 x 600 pixels
- 262.144 colours
- 256 MB / 1 GB
- 230W x 177H x 60D



# Touch Monitor

FP3000

19-inch



## FP-3900T

FP3900-T41-U CE UL SP AC 100-240V

- TFT colour SXGA
- 1280 x 1024 pixels
- 16.777.216 colours
- 460W x 390H x 77.7D

SIO ch x 1 USB x 1

15-inch



## FP-3710T

FP3710-T41-U CE UL SP AC 100-240V

- TFT colour XGA
- 1024 x 768 pixels
- 16.777.216 colours
- 395W x 294H x 60D

SIO ch x 1 USB x 1

12.1-inch



## FP-3600T

FP3600-T41-24V DC24V

- TFT colour SVGA
- 800 x 600 pixels
- 262.144 colours
- 317W x 243H x 58D

SIO ch x 1 USB x 1



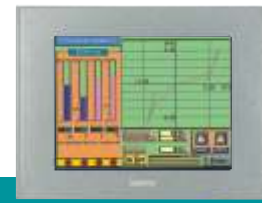
## FP-3650T

FP3650-T41 AC 100-240V

- TFT colour SVGA
- 1024 x 768 pixels
- 262.144 colours
- 317W x 243H x 58D

SIO ch x 1 USB x 1

10.4-inch



## FP-3500T

FP3500-T41-24V CE UL SP DC24V

- TFT colour VGA
- 640 x 480 pixels
- 262.144 colours
- 317W x 243H x 58D

SIO ch x 1 USB x 1

## Keypad model

Touch monitor

15-inch



## FP-3710K

FP3710-K41-U CE UL SP AC 100-240V

- TFT colour XGA
- 1024 x 768 pixels
- 16 M colours
- 395W x 294H x 60D
- Number of key switches: 74

SIO ch x 1 USB x 1



ARCTIKA – официальный дистрибьютор

Pro-face  
Human Machine Interface

### Status Tool Bar

Helps to easily create a screen from design to transfer.  
Select between 2 options: Maximize/Minimize.

### Thumbnail Display

Preview screens on the thumbnail to eliminate doubts and mistakes.  
You can preview screens while creating a new screen.  
You can turn the display mode OFF.

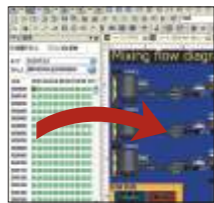
### Workspace Switching Tab

Easily switch work spaces, such as system settings and address settings, using tabs.

### Address Mapping

Adjust address settings using only the mouse.

Configure addresses easily and visually using the drag&drop function



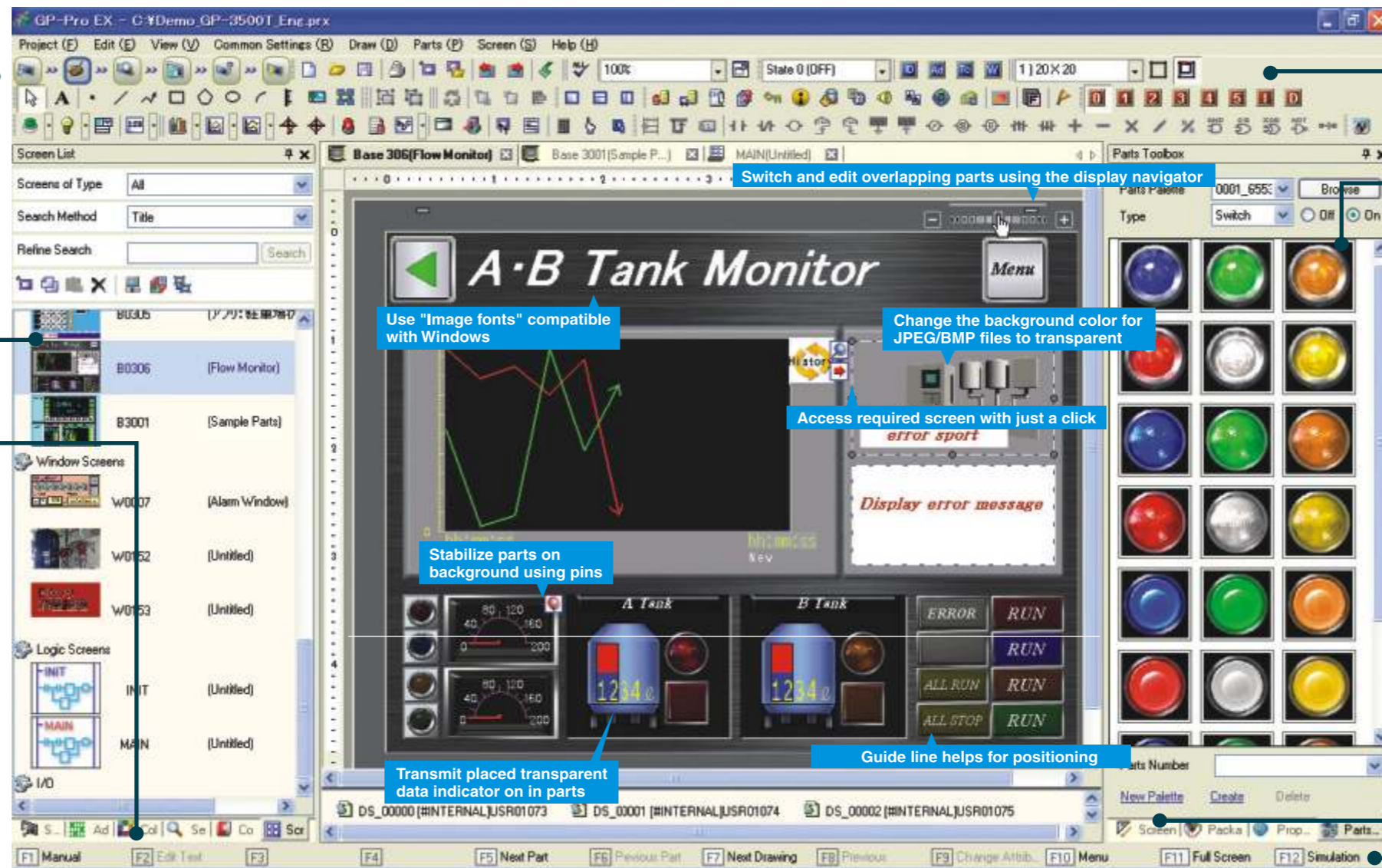
### Headers & Footers

Enter images frequently used in the creation of screens (top/bottom), for use anytime on the project.



### Sharing Packages

Specify location to save package files. Save files on a server or external media to share with others.



### Customize Tool Bar Settings

Select only necessary items to create a tool bar that is easy to use.

### Parts Tool Box

Use the drag&drop function to easily configure parts you can see in the window.

### Property Window

Verify various settings all at once and perform editing here.



### Support Function Keys

Enter frequently used functions into the function keys for editing without using a mouse.



Allocate functions to function key for each base screen.

Main functions		
F5   Transfer selected parts	Ctrl+F5   Create switch parts	
F9   Change attributes	Ctrl+F7   Create data display parts	
F11   Full screen	Shift+F3   Create new screen	
F12   Simulation		

## Main functions

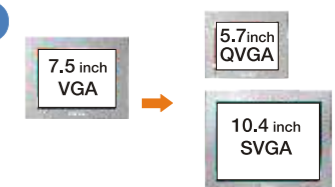
- Switches, lights, buttons, displaying / keyboarding of data numerical / alphanumeric.
- Alarm management
- Recipes management, Data sampling
- Graph management with historic data
- Password management
- Data storage on CF card
- Data export --->PC
- Multi-language management
- Multi-drivers simultaneously
- Logic program integrated with screen management
- Simulation

## New functions - Ver 2.2

- Object animation : colour, visibility, rotation, moving, ...
- Treng graph : XY trend graph, zoom function, channel transparency
- Security : password on each object with different levels
- Selector list : list of choice for actions - easy to use and develop
- LADDER simulation on PC - no need to download to debug / test the project
- Instruction list language
- Vista support
- + More than 200 new or improved functions

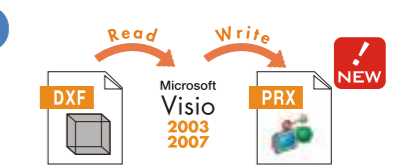
### Resolution Converter

Resolution is adjusted to automatically convert project files. Dramatically reduce work involved in changing to a different sized model.



### Pro-face Converter

Write DXF, DWF files downloaded using Visio to GP-Pro EX project files. You can also use CAD data on screens.





## Graphic parts for beautiful screens.

### 3D Real Parts **NEW**

By adding three dimensional "Real Parts", it is easy to create beautiful value-added screens.



Some parts must be downloaded from "Otasuke Pro!"

## Functional parts to create screens that are easy to use.

### Switching

In the pursuit of easy to use screens, functions which prevent mistakes such as a delay function and multi functions were added to implement multifunctional switches.



#### ON Delay / OFF Delay Double Touch Switches

This function shows status of "delay"/"waiting for double-pressing", which is effective in preventing malfunctions.



#### Multi-function Switches

You can add several functions to one switch.

### Selector list **NEW**

We were able to build a screen which is clear and easy to understand with a "pull-down" selection list for parts, thus reducing the number of parts.



Effective in entering particular numbers.

## Parts animation greatly reduces the number of screens to be created.

### Display Parts On/Off **NEW**

Set display of parts to on/off when changing display screen by device or operator.



The same base screen may be used

Reduce work by not creating new screens.

### Transfer / Rotate Parts **NEW**

It is possible to transfer/rotate parts. Reduced work involved in creating call-up screens.

#### Horizontal / vertical transfer



It is possible to express the movements of a conveyer.

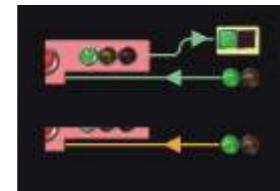
#### Rotate



Useful for meters.

### Change Parts colors **NEW**

It is possible to change colors in graphs and drawings. Eliminates work involved in creating call-up screens.



Specify the object and change colors



Specify the color and change it

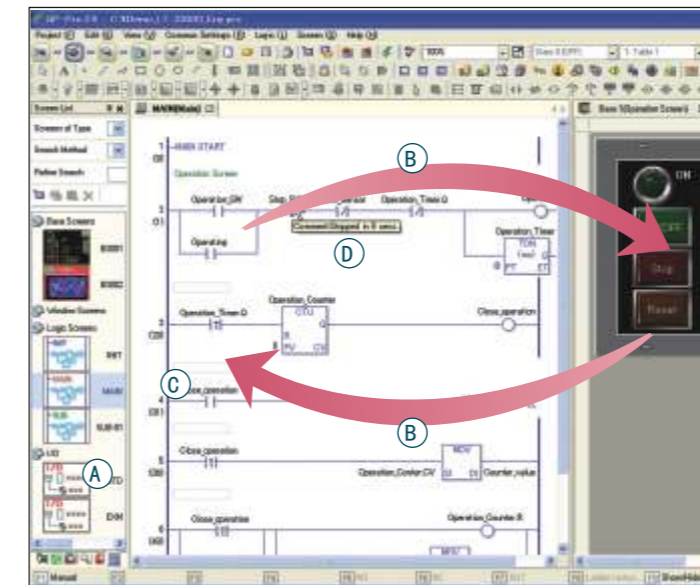
It is also possible to change colors of lines, drawings, graph lines, background, etc

## LADDER and LIST program integrated to screen management.

### Logic Program

GP-Pro EX can also be used to create screen display programs created using PLC. Lamp flicker and data computing programs, etc., are included.

For ● GP3000 (Excluding GP-33□OH, GP-3302B, GP-33□□1, GP-3200, and GP-3201.)  
● LT3000 (Not compatible with some connection device address specifications)



### Editing is easy!

#### Additional connection device specifications

You can use the addresses of externally connected equipment for address specification from the logic side, and easily interlock.

#### Ⓐ Block-structured Subroutine

Initialization logic, main logic and subroutines can be blocked, enabling smooth editing.

#### Ⓑ Drag & Drop

You only have to drag & drop parts on the drawing screen and the logic screen.

#### Ⓒ Number of steps displayed **UP**

You can see the size of a program easily with the number of steps displayed. The norm of 15,000 steps has been increased to 60,000 steps for an extended program area. The internal memory is reduced to 1MB for 60,000 steps (screen data).

#### Ⓓ Tip Display for Comments

Displaying comments as tips makes a program clear. Comments can be displayed at any time.

### Useful for estimating the situation in case of problems and maintenance

#### ○ Logic Display

You can check the operation of a logic program within the system on site.

#### ○ Address Display

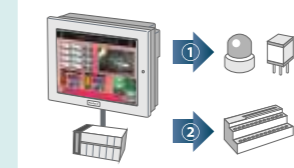
The logic address is displayed, enabling you to check variable names and their current values.

#### ○ Online Editing

You can change a logic program even while the control function is operating without stopping work.

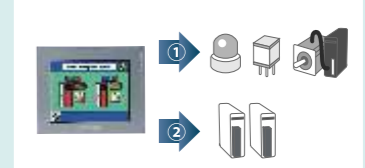
### Use the logic program for programming external devices

#### □ Programmable display With GP3000 Series C Class



① Directly control I/O device from the main unit  
② Use a wire-saving unit and control I/O device

#### □ Controller equipped with display With LT3000 series



① Directly control I/O device from the main unit (with special I/O)  
② Install an EX module and control I/O device

### D-Script

Develop a program using unique simplified language as though using high-level language. Use GP2000 series D-script as is for smooth replacement.

Function	Operation	Example
Bit operation	ON, OFF, clear	
Memory operation	Copy and shift, etc.	
CF file operation	File access, delete list output, etc.	
USB file operation	File access, delete list output, etc.	
SIO port operation	Send/receive data	
Printer operation	Send data	
Drawing	Call screen, circle, straight line, square, etc.	
Other	Debug message and exit WinGP	

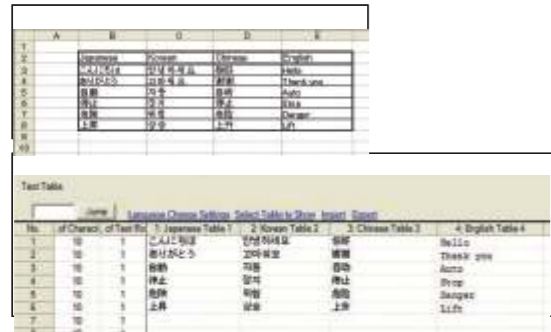
Tool Conditional	Operation	Example
Branching	IF, LOOP, etc.	
Comparison	AND, OR >, =, <, etc.	
Operation	+, *, bit operator, etc.	

You can configure the setting on starting condition such as "Always on", "Timer bits changes" and "When conditions are met". In addition, a wide variety of functions such as search (searching and replacing strings in a script) and debugging functions (displaying messages and addresses on the system), etc., are provided.

## Set language according to the operator with just one click.

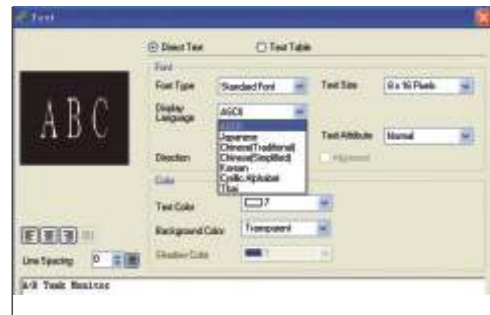
### Text Table

It is easy to switch between languages for each country. Create multi-language projects.



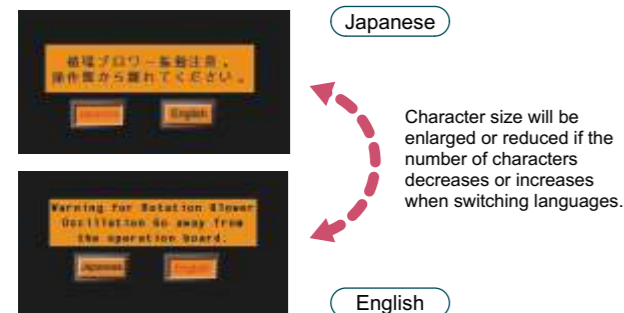
### Unicode

It is possible to display and input multiple languages by treating characters in different languages as single character codes.



### Automatic Character Size Adjustment

Switching languages when multiple-languages are used automatically adjusts character sizes according to the size of the switches, lamps and message displays.



## Movement inspection/document creation for efficient design.

### GP-Pro EX Simulation

Implement a quasi-environment connected to PLC on your PC. Prevents mistakes by confirming "Debug" before transfer.

#### Screen View

View screens while editing, and use the mouse to control or confirm parts.



#### Address View

Simultaneously display and edit present address value of virtually connected devices. Link the screen view and logic view, for intuitive debug.



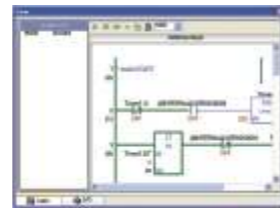
#### I/O View

Verify address allocated at I/O terminal for additional external I/O. It is possible to switch input ON/OFF and update present values.



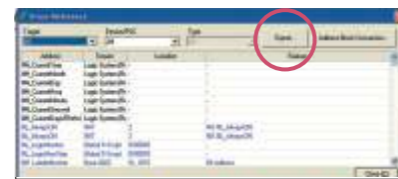
#### Logic View

Used to debug logic program, it is possible to confirm that symbol parameters are ON/OFF and confirm the present value.



### Cross Reference CSV export

You can now output the list of used addresses as a CSV file from the cross reference screen. You can output not only all screens, but also individual screens.



#### In addition...

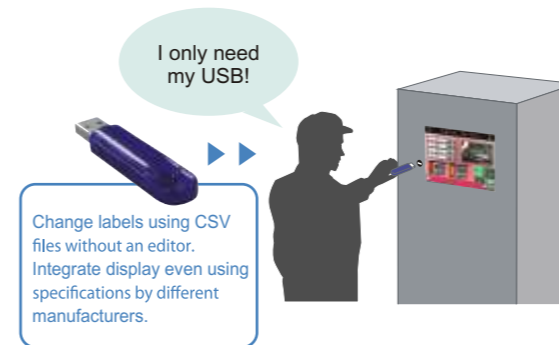
It is possible to select and print out necessary items among configuration information from a project file created.



## Easy maintenance.

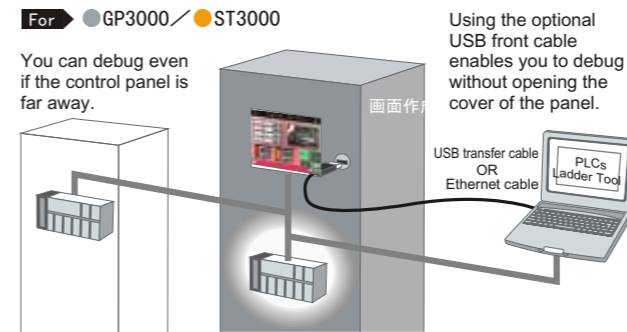
### USB Flash Memory Loader

Easily send new data using USB memory without having to bring your laptop on site.



### Pass-Through

Easily debug ladder and data using the display. Open the board to easily connect a PC to the PLC.



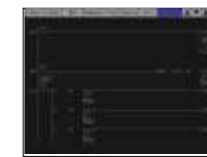
### Ladder Monitor / Device Monitor

It is possible to monitor a PLC ladder or device using a display on site. Readily check PLC status at time of occurrence of trouble.

#### Ladder Monitor

For GP3000

Inch models: 15/12. 1/10. 4/7. 5



#### Device Monitor



## Data logging for easy use.

### Operation Log

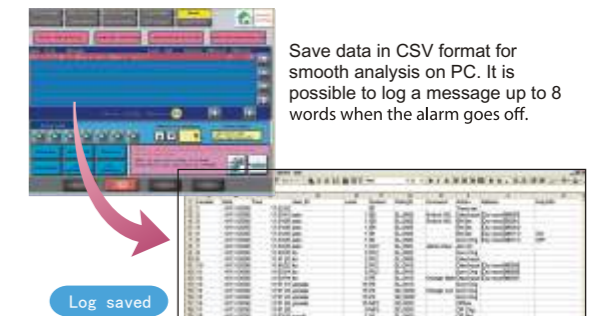
Obtain operator's control log by part. Monitor necessary parts only for easy management.



The CSV file can hold 10,000 entries. Create a new file when full.

### Alarm Log

Simultaneously obtain PLC alarm message and device value to quickly discover the cause.



### Historical Trend Graph

Chronologically display graph for CF card and USB memory. Easily analyze log of abnormal occurrences.



#### Historical Trend Graph display ON/OFF

Turn the display ON/OFF for necessary graphs online (channel). It is also possible to display auxiliary lines (upper limit, reference point, lower limit)



#### XY Graph

It is possible to display points/lines of word address values, such as weight and pressure, to XY coordinates.



## Security function can be set for each user.

### Security function per Part

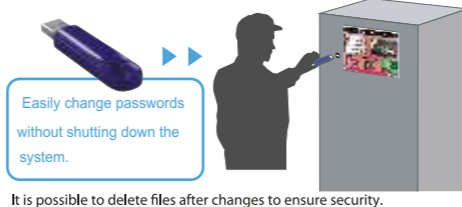
Configure authority parameters by setting certified ID or password for each part to be controlled using different security levels.



Security levels may be set for each part that can be controlled. Combined with the animation function, it is possible not to display parts that require a higher level of authority than at the logging in level.

### Change Passwords Online

It is possible to change passwords online. Passwords may also be changed or added using a csv file in CF/USB memory.



## Reduce work using combined solutions!

### No PC on site

Change passwords and labels, or transfer screens and collect logs using only a USB memory.



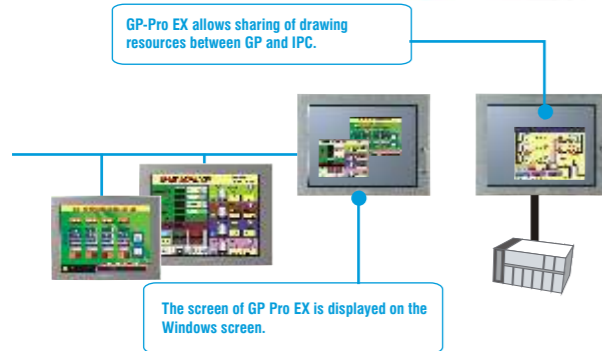
## WinGP

## GP-Pro EX for panel computer Runtime Engine.

### Runtime PC WinGP

Runtime engine for IPC and PC/AT

- Screen editor for panel computer.
- Compatible with GP screen data.
- Multi-driver supported with various host controller.



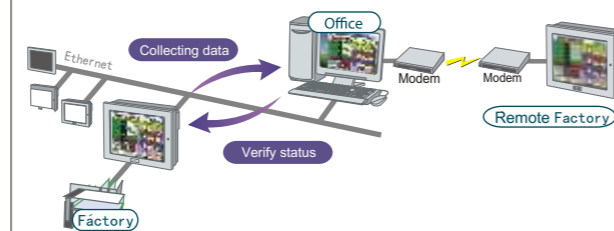
- Runtime PC, 3000 variables / page
- All protocols available (Unitelway, Modbus series and TCP, MPI, PPI,...)
- Routines import / export of variables ---> soft Windows - VB, VC, Dot.net

## GP-Viewer EX

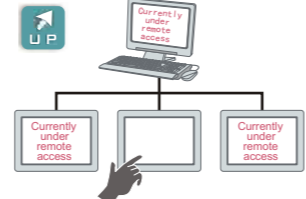
## Remote monitoring and control.

### Remote monitoring software GP Viewer EX

You can check the situation of the site on PCs outside the site, as you can view/operate the same screens as those at the site through the Ethernet.



- Lock screen operation with exclusive access control  
Set screen operation so that it can not be performed on any display (or PC) except the one being used to avoid mistakes by another operator when using multiple displays or when connected to a PC.



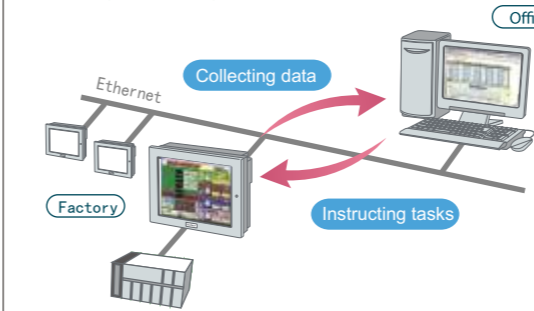
## Pro-Server EX

## Remote solutions without program required.

### Data management software Pro-Server EX

Collect work records on computer connected to the Ethernet. Operating instructions, such as recipes, can be sent from a computer to GP.

- For ● GP3000 / ● LT3000 (Only with Ethernet I/F machine)  
● PS3000 / ● PL3000 (WinGP required)

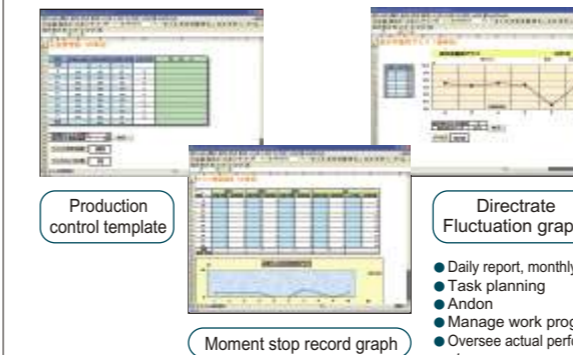


**Recipe** Automatically deliver production instructions!  
Directly deliver instructions to the site for recipes Created at the office. Build an accurate and safe system without any delivery mistakes.

**Data logging** Collect production data in real time!  
Automatically collect data, such as PLC data, in various formats, including Excel.

**Record creation** Share information by creating records with Excel  
Accurately create site documents such as daily reports. Reduce programming work using templates prepared ahead of time.

Over 29 standard templates which can be used immediately



**Works together with third party production report software**  
Connect directly to "EasyReport PRO" by Harmony Co., Ltd.

**MES action also supported**  
The MES action tool allows you to collect data using the analysis and reporting functions provided by SQL Server.

List of available software	
◎ GP-Pro EX Ver.2.2 (PFE-EX-ED(E))	
OS	Windows 2000 (service Pack 3 or later), Windows XP (Home Edition, Professional), Windows Vista (Ultimate, Home Premium, Home Basic, Business) For the installation of this product, administrator rights are required.
CPU	Pentium III 800MHz or greater (Pentium 4 1.3GHz or greater recommended)
Resolution	SVGA 800X600 or better (256 colors or greater required)
Memory	512MB or greater (1 GB or greater recommended)
Hard Disk Space	400MB or greater Free space necessary for installation
Software Menu	English/Japanese (Other languages are scheduled to be supported. For more details, visit the "Otasuke web site")
Languages that Hardware can Display	English/Japanese/Korean/Chinese (simplified/Traditional)/Taiwanese/Cyrillic/Thai For languages other than English/Japanese, FEPs and fonts for these languages should be added.

Transfer tool	
OS	Windows 98 (Second edition or later), Windows Me, Windows 2000 (Service Pack 3 or later), Windows XP (Home Edition, Professional), Windows Vista (Ultimate, Home Premium, Home Basic, Business, Enterprise) ※ For the installation of this product, administrator rights are required.
CPU	Pentium II 266MHz or greater recommended.
Memory	128 MB or greater (512 MB recommended)
Hard Disk Space	60 MB or greater ※ Free space necessary for installation

※ A USB port or Ethernet port is required to transfer screens on a PC

Pass-Through	
OS	Windows 2000 Professional (Service Pack 4 or later), Windows XP (Service Pack 2 or later)

Web Server	
OS	Windows 2000 (Service Pack 3 or later), Windows XP (Service Pack 2), Windows Vista (Ultimate, Home Premium, Home Basic, Business, Enterprise), Windows Server 2003 (Service Pack 2)
Supported Browser	Microsoft Internet Explorer Ver. 6.0 or 7.0
Screen Resolution	XGA 1024X768 or greater

GP Remote Printer Server	
OS	Windows 2000 (Service Pack 3 or later), Windows XP (Professional), Windows Server 2003
Hard Disk Space	800KB or greater Free space necessary for installation
FTP Server	FTP server component included in IIS IIS Versions: Windows 2000:IIS5.0, Windows XP:IIS5.1, Windows Server 2003:IIS6.0

Pro-Server EX Ver.1.2 (EX-SDV-V12)	
OS	Windows 2000 (Service Pack 3 or later), Windows XP (Home Edition, Professional), Windows Server 2003 For the installation of this product, administrator rights are required.
CPU	Pentium III 500MHz or greater (Pentium III 800MHz or greater recommended)
Resolution	SVGA 800X600 or greater (256 colors or greater required), only 96dpi font
Memory	128 MB or greater (256 MB or greater recommended)
Hard Disk Space	1GB or greater (2GB or greater recommended) Free space necessary for installation
Language Software Menu	English/Japanese
Other Software	Microsoft Excel 2000 or later (for setting the action function) Microsoft Access 2000 or later (for setting the action function) Microsoft Internet Explorer Ver.5.0 or later (for setting the action function) .NET Framework Ver.1.1
Printer	Any printer if it is supported by the OS
Network Adapter	10BASE-T, 100BASE-TX
Network Configuration	TCP/IP protocol (Configure from "Control Panel" in Windows)

GP-Viewer EX (EX-VIEWER-LICENSE)	
OS	Windows 2000 (Service Pack 3), Windows XP (service pack 2), Windows Vista (Ultimate, Home Premium, Home Basic, Business, Enterprise), Windows Server 2003 (Service Pack 2)

WinGP for IPC (EX-WINGP-IPC)	
OS	Windows 2000 Professional (service Pack 3 or later), Windows XP Professional, Windows XP embedded.
Memory	256MB or greater (512MB or greater recommended)

WinGP for PC/AT (EX-WINGP-PCAT)	
OS	Windows 2000 (service Pack 3 or later), Windows XP (Home edition, Pro.), Windows Vista (Ultimate, Home Premium, Home Basic, Business, Enterprise) 32 bit
CPU	Pentium M 1GHz or greater recommended
Display Resolution	SVGA 800X600 or better
Memory	512 MB or greater (1GB or greater recommended)
Hard Disk Space	200 MB or greater

RPA (Remote PC Access) (EX-RPA)	
OS	Visit <a href="http://ultravnc.sourceforge.net">http://ultravnc.sourceforge.net</a>
Other	GP-Pro EX (Ver.2.0 or later), RPA keycode (EX-RPA (sold separately)), Ultra-VNC Ver .1.0.2 should be installed on the PCs on the server, LAN cable, HUB (commercially available). Connect one server to one GP.



# International Pro-face

## WORLDWIDE SUPPORT



<p><b>1 European Head Office</b> Pro-face Europe B.V. Wegalaan 32 2132 JC Hoofddorp THE NETHERLANDS Tel: +31 (0)23 55 44 099 Fax: +31 (0)23 55 44 090 www.pro-face.com info@pro-face.com</p>	<p><b>2 Austria</b> Pro-face Europe B.V. (Austria office) Softwarepark 35/2/14c A-4232 Hagenberg AUSTRIA Tel: +43 7236 3343-620 Fax: +43 7236 3343-629 www.pro-face.at office@pro-face.at</p>	<p><b>5 Denmark, Norway, Finland, Estonia, Latvia, Lithuania</b> Pro-face Northern Europe Ledreborg Allé 118 DK-4000 Roskilde DENMARK Tel: +45 70 22 01 22 Fax: +45 70 22 01 33 www.pro-face.dk info@pro-face.dk</p>	<p><b>3 Hungary</b> Pro-face Europe B.V. (Hungarian office) Szada HUNGARY Tel: +36 28 404 655 Fax: +36 28 404 655 www.pro-face.com info@pro-face.com</p>	<p><b>10 Poland</b> Pro-face Europe B.V. (Poland Office) ul. Ostrobramska 101 04-041 Warszawa, POLAND Tel: +48 (22) 465-66-62 Fax: +48 (22) 465-66-62 www.pro-face.pl proface@pro-face.pl</p>	<p><b>11 Sweden</b> Pro-face Sweden AB Produktvägen 8B SE-246 21 Löddköpinge(Malmö) SWEDEN Tel: +46 46 540 90 70 Fax: +46 46 71 27 90 www.pro-face.eu.net info@pro-face.se</p>				
<p><b>1 Belgium/Luxembourg</b> Pro-face Europe B.V. (Belgium office) Wegalaan 32 2132 JC Hoofddorp THE NETHERLANDS Tel: +32 473 879 115 Fax: +31 23 55 44 090 www.pro-face.be benelux@pro-face.com</p>	<p><b>6 France</b> Pro-face France S.A.S. 1, rue Henri Becquerel 77290 Milry-Mory FRANCE Tel: +33 (0)1 60 21 22 91 Fax: +33 (0)1 60 21 22 92 www.pro-face.fr info@pro-face.fr</p>	<p><b>3 Italy</b> Pro-face Italia S.p.a. Via G. di Vittorio 26 20030 Bovisio Masciago (Milano) ITALY Tel: +39 0362 59 96 1 Fax: +39 0362 59 96 69 www.pro-face.it info@pro-face.it</p>	<p><b>11 Russia</b> Pro-face Northern Europe (Russia Office) Pulkovskoe Shosse 30-4 196158 Saint Petersburg RUSSIA Tel: +7 812 336 47 06 Fax: 7 812 336 47 18 www.pro-face.ru info@pro-face.ru</p>	<p><b>11 Switzerland</b> Pro-face Schweiz GmbH Pumpwerkstr. 23 CH-8105 Regensdorf SWITZERLAND Tel: +41 (0)43 343 7272 Fax: +41 (0)43 343 7279 www.pro-face.ch info@pro-face.ch</p>	<p><b>1 Czech Rep. &amp; Slovakia</b> Pro-face Europe B.V. (Czech office) Stenovice CZECH REPUBLIC Tel: +420 37 37 21 214 Fax: +420 37 37 21 214 www.pro-face.cz</p>	<p><b>7 Germany</b> Pro-face Deutschland GmbH Albertus-Magnus-Straße 11 42719 Solingen GERMANY Tel: +49 (0)212 258 260 Fax: +49 (0)212 258 2640 www.pro-face.de sales@pro-face.de support@pro-face.de</p>	<p><b>1 The Netherlands</b> Pro-face Europe B.V. (The Netherlands office) Wegalaan 32 2132 JC Hoofddorp THE NETHERLANDS Tel: +31 23 55 44 094 Fax: +31 (0)23 55 44 090 www.pro-face.nl</p>	<p><b>11 Spain and Portugal</b> Pro-face España C/ Navarra 44 E-08440 Cardedeu (Barcelona) SPAIN Tel: +34 93 846 07 45 Fax: +34 93 845 48 68 www.pro-face.es central@pro-face.es</p>	<p><b>6 UK &amp; Ireland</b> United Kingdom Pro-face UK Ltd. Pro-face House 8 Orchard Court Bingley Business Park Covenry CV3 2TQ ENGLAND Tel: +44 (0)2476 440088 Fax: +44 (0)2476 440099 www.pro-face.co.uk info@pro-face.co.uk</p>
<p><b>Global Head Office</b> Digital Electronics Corporation 8-2-52 Nankohigashi, Suminoe-Ku Osaka 559-0031 JAPAN Tel: +81 (0)6 6613 3116 Fax: +81 (0)6 6613 5888 www.pro-face.com info@pro-face.com</p>	<p><b>South Korea</b> Pro-face Korea Co., Ltd. 4th floor, Cheil Bldg. 94-46 Youngdeungpo-dong 7ga, Yongdeungpo-gu, Seoul 150-37 SOUTH KOREA Tel: +82 (0)2 2630 9850 Fax: +82 (0)2 2630 9860 www.pro-face.co.kr proface@pro-face.co.kr</p>	<p><b>Taiwan</b> Pro-face Taiwan Co., Ltd. 3F, No.39, Ji-Hu Road, Nei-Hu Dist. Taipei 114 TAIWAN Tel: +886 (0)2 2657 112 Fax: +886 (0)2 2657 1021 1 www.pro-face.com.tw proface@pro-face.com.tw</p>	<p><b>China</b> Pro-face China International Trading (Shanghai) Unit 1110, 550 Yanan Road East, Shanghai 200001 P.R. CHINA Tel: +86 (0)21 6361 5175 Fax: +86 (0)21 6361 5176 www.pro-face.com.cn proface@pro-face.com.cn</p>	<p><b>North/South American Head Office</b> Pro-face America, Inc. (North/South American Head Office) 750 North Maple Road Saville, MI 48176-1292 U.S.A. Tel: +1 734 429 4971 Fax: +1 734 429 1010 sales.info@pro-faceamerica.com www.pro-faceamerica.com</p>	<p><b>South-East Asia Pacific</b> Pro-face South-East Asia Pacific Co., Ltd. 13th Floor, Rungrojthanakul Building 44/1, Ratchadapisek Road Huaykwang Sub-District, Huaykwang District Bangkok 10310 THAILAND Tel: +66 (0)2 260 8282 Fax: +66 (0)2 260 8283 www.pro-face.co.th support@pro-face.co.th</p>	<p><b>Australia and New Zealand</b> Pro-face Australia Pty Ltd 87 Ricketts Road, Mt. Waverley, VIC 3149 AUSTRALIA Tel: +61 (0)3 9550 7395 Fax: +61 (0)3 9550 7390 www.pro-face.com.au/www.pro-face.co.nz pfau@pro-face.com</p>	<p><b>India</b> Pro-face India (Mumbai Office) Unit # 1141,1142 Building No.11, 4th Floor, Solitaire Corporate Park, Andheri Kurla Road, Chakala Andheri, Mumbai 400059 INDIA Tel: +91 80 4011 8050 / +91 80 4011 8033 Fax: +91 80 4011 8025 sales.proface@pro-face.co.in</p>		

### Our Environmental Policy and Compliance with the RoHS Directive



Pro-face has taken significant steps to meet increasingly stringent requirements for environmental preservation and has sought to comply with the RoHS Directive by adopting measures to eliminate specified harmful substances from existing products and products to be manufactured and sold beginning in 2006. For details, please refer to our web site or contact our sales office in your country.



**www.pro-face.eu**

Worldwide Contacts: [www.pro-face.com/worldwide/](http://www.pro-face.com/worldwide/)

### Conformity with International Safety Standards



Pro-face products and component parts bearing the CE Mark and the UL or c-UL Listing and Recognized Component Marks are your guarantees of compliance with safety standards accepted in countries and regions worldwide.



**Caution:** Before operating any of these products, be sure to read all related manuals thoroughly.

- For printing purposes, the colours in this catalog may differ from those of the actual unit.
- Actual user screens may differ from the screens shown here.
- LCD screens may exhibit minute grid-points (light and dark) on the Display Panel surface. Also, "Contouring" - where some parts of the screen are brighter than others, producing a wavelike pattern - may occasionally occur. Both are normal for an LCD display and are not defects.
- All product names used in this catalog are the registered trademarks or trademarks of their respective companies.
- All information contained in this catalog is subject to change without notice.

- Microsoft® Excel, Windows® the Windows logo, Windows NT®, and/or other Microsoft products referenced here are either registered trademarks or trademarks of Microsoft Corporation in the U.S. and/or other countries.
- Intel® Pentium®, Celeron® and XScale® are either trademarks or registered trademarks of Intel Corporation or its subsidiaries in the U.S. and other countries.
- Eden™ is a trademark or registered trademark of VIA Technologies Inc.