

avrrora-arm.ru
+7 (495) 956-62-18

ENGINEERING
TOMORROW

Danfoss

Counterfeit & Danfoss products (077B thermostats)

Operational guide to identify counterfeit and originals

Birthe Hansen, Global Quality Manager, September 2019

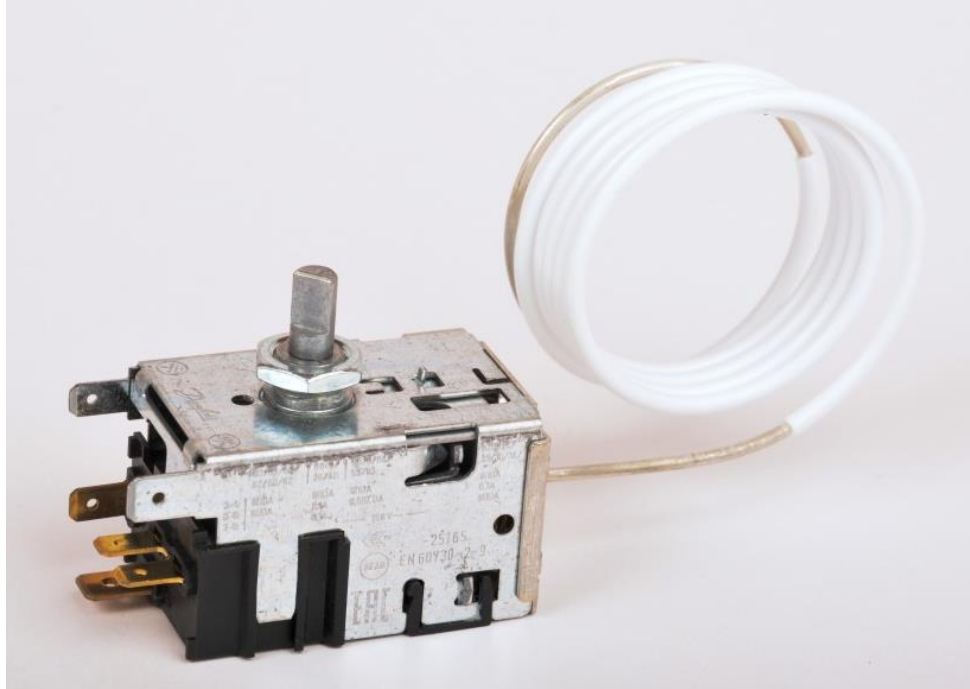
FAKE

Danfoss 077B



UL Logo

Danfoss 077B



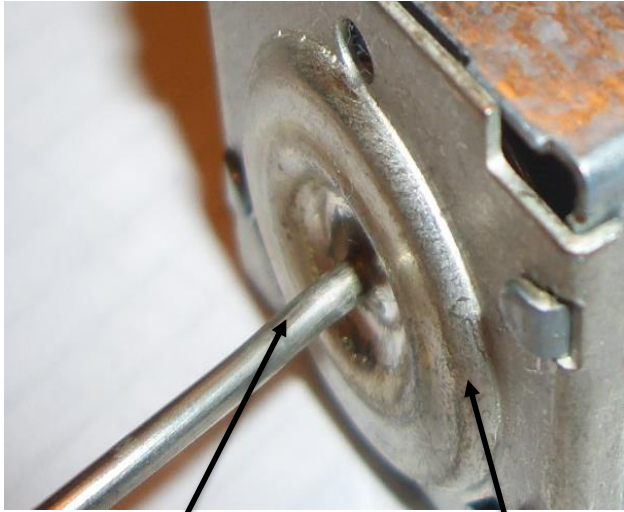
Danfoss 077B



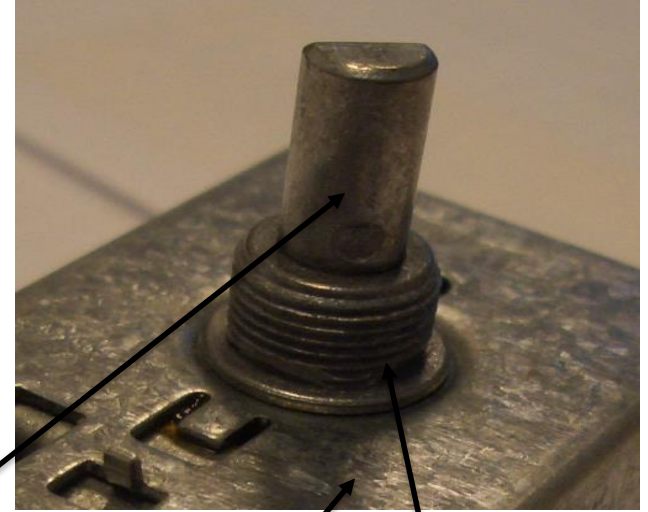
Danfoss use many different code no.

Danfoss logo

Name of material used in Danfoss 077B



Capillary tube - endbottom

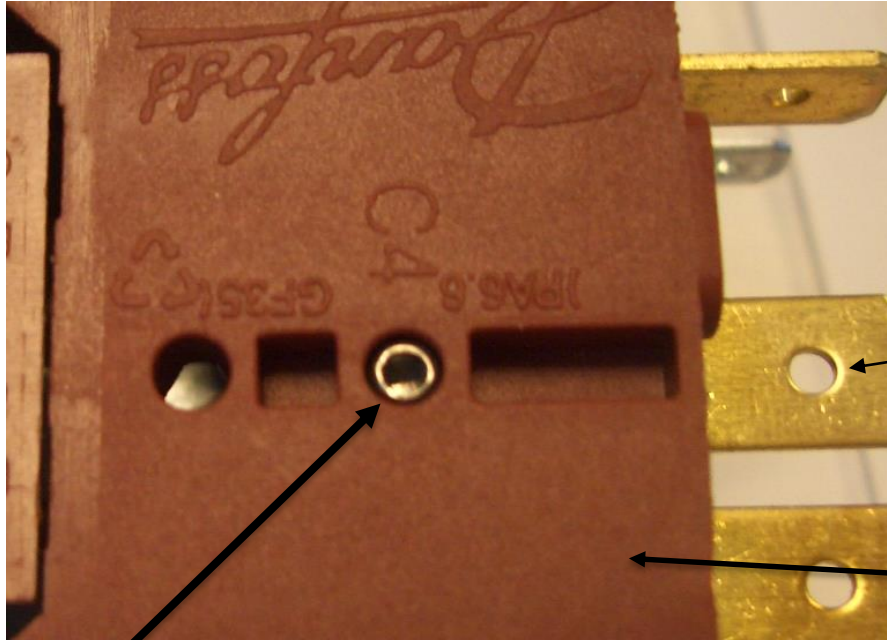


Spindle

Shell (body)

Connector

Name of material used in Danfoss 077B



Danfoss adjusting screw (casting part)

Danfoss terminals

Danfoss contact house
(black, grey, brown)

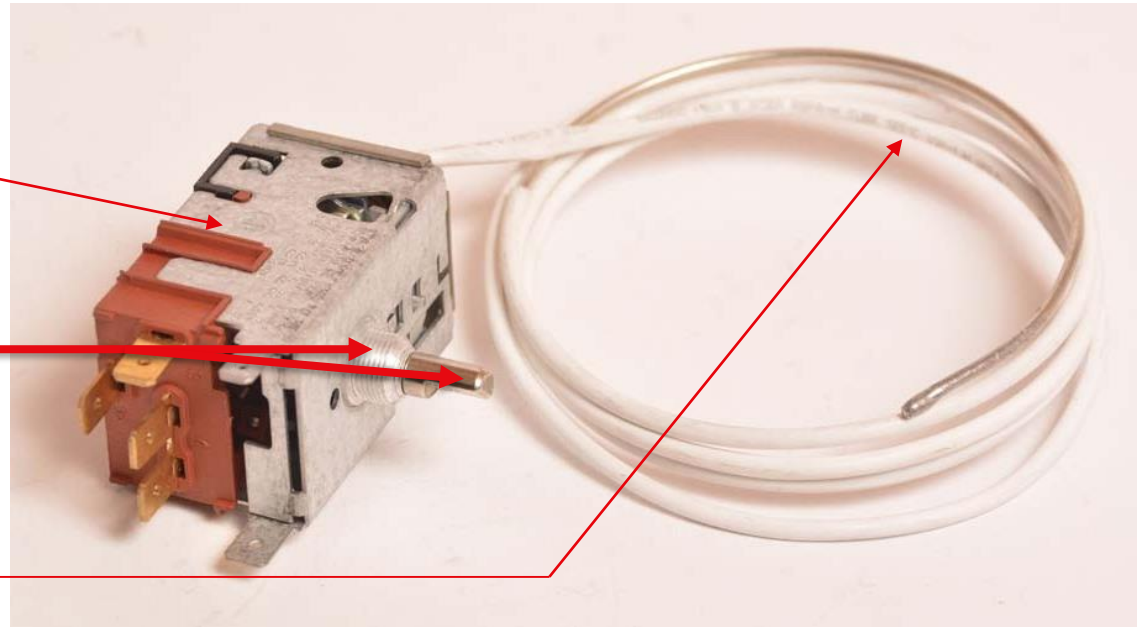
Example of counterfeit

Sold under Danfoss brand and with UL on shell (body) and plastic tube.

Shell (body)

Danfoss do not use turned parts as spindle and connector.

Danfoss do not use text on plastic coated tube.



Original approvals for Danfoss 077B




Original Danfoss 077B thermostat

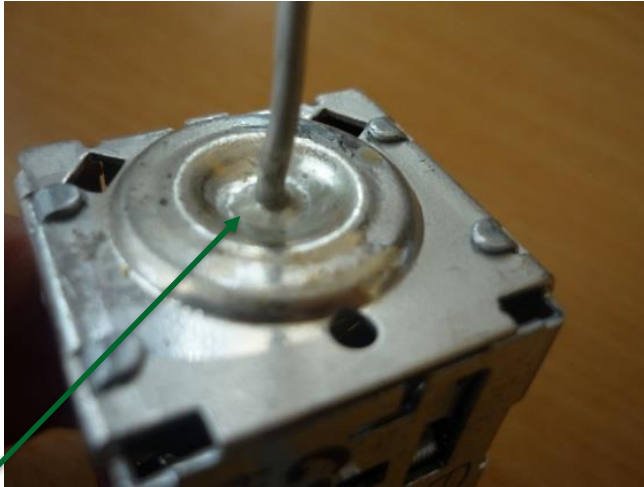


Imitation of approvals for Danfoss 077B



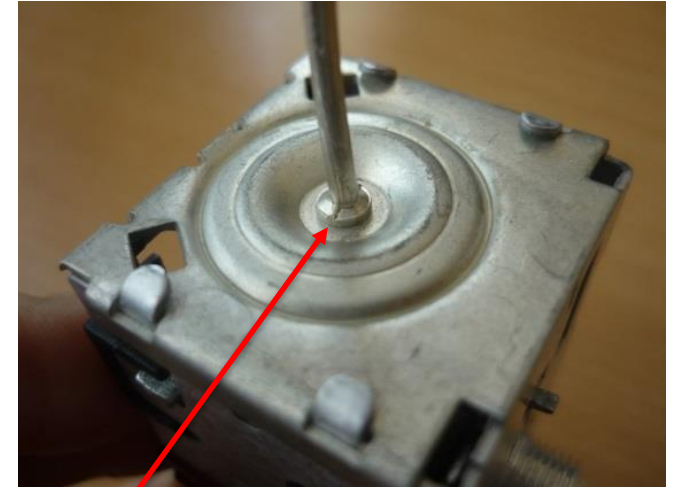
Imitation of Danfoss 077B thermostat 

Imitations of Danfoss 077B thermostat compare with Danfoss original



Danfoss

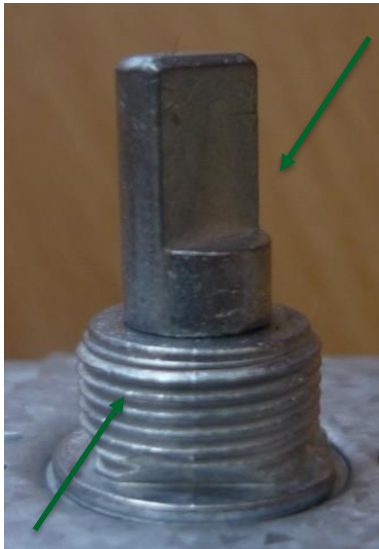
closing of bottom / capillary tube
included soldering



Imitation

closing of bottom / capillary tube
exclude soldering

Imitations of Danfoss 077B thermostat compare with Danfoss original



Danfoss
Spindle / Connector
(casting parts)



Imitation
Spindle / Connector
(turned parts)

Imitation of Danfoss 077B thermostat compared with Danfoss original



Danfoss
Danfoss logo on Shell

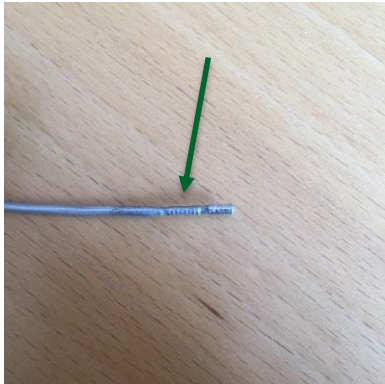


Imitation
With and without
Danfoss logo on Shell

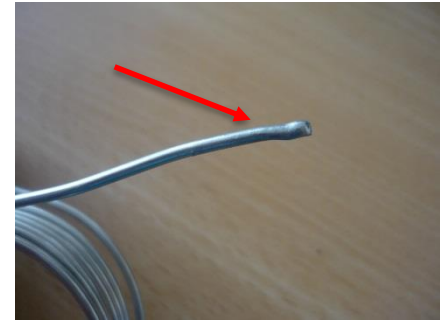


Turned parts

Copy of Danfoss thermostat compared with Danfoss original



Danfoss
Closing of sensor



Imitation
Closing of sensor

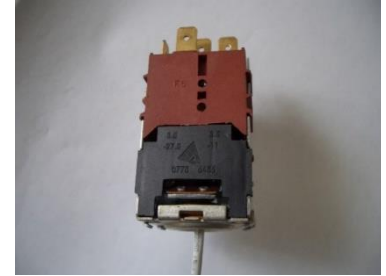
Imitation of Danfoss 077B thermostat compared with Danfoss original



Danfoss

Stamping / laser
on cover plate

(can be in black, grey or brown)



Imitation

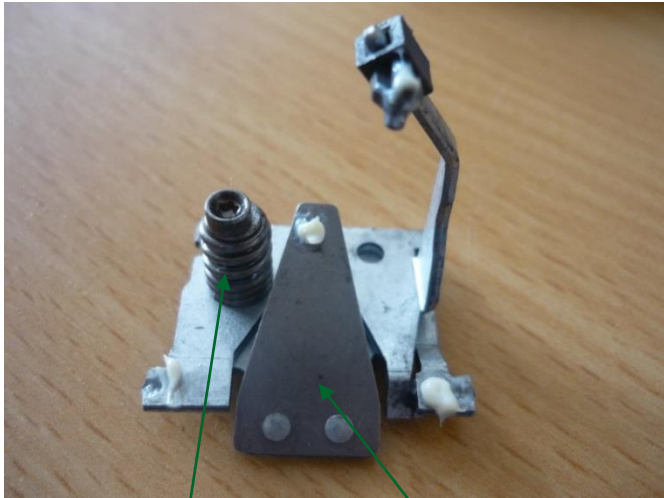
Stamping
on cover plate

(many variants seen)

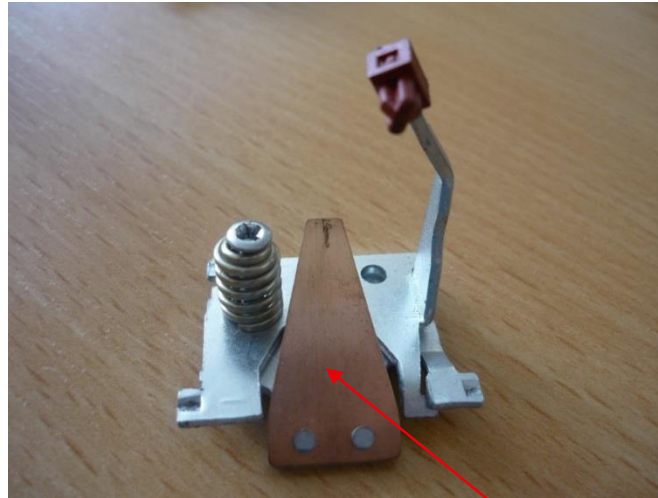


Copper coated spring

Imitation of Danfoss 077B thermostat compared with Danfoss original

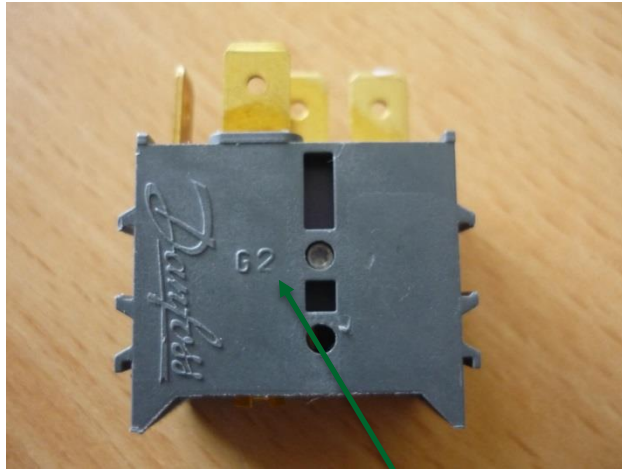


Danfoss
Main arm
with torx screw Spring steel



Imitation
Main arm
with cross screw Copper coated iron

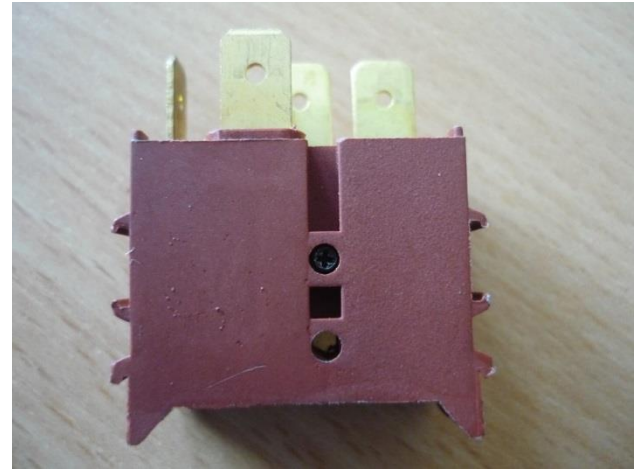
Imitation of Danfoss 077B thermostat compared with Danfoss original



(tool and cavity)

Danfoss

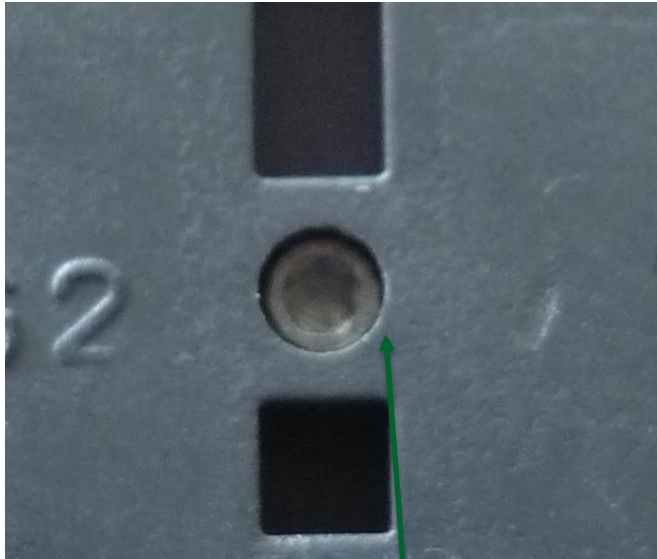
Danfoss logo on Contact house, contact house can be grey, brown (nature) or black.



Imitation

Without Danfoss logo on Contact house (Both number and letter not seen on imitations)

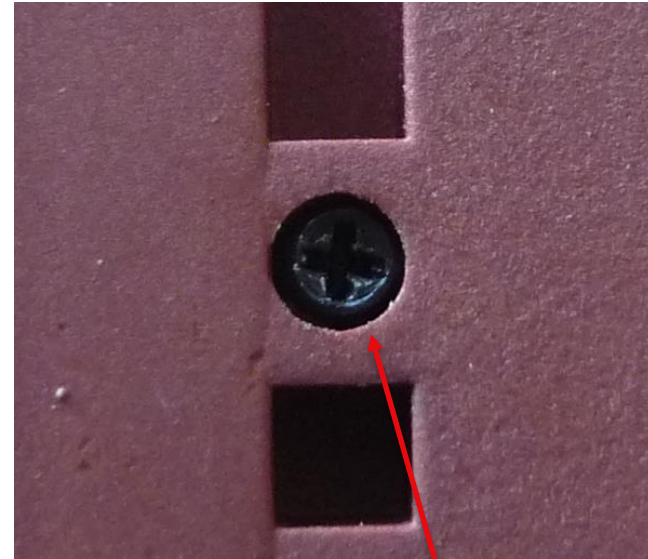
Imitation of Danfoss 077B thermostat compared with Danfoss original



(Hexagon screw)

Danfoss

Differential-screw in contact-house

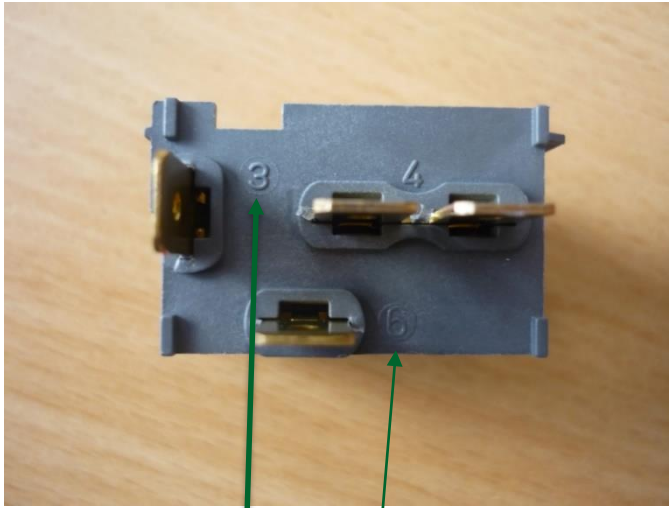


(cross screw)

Imitation

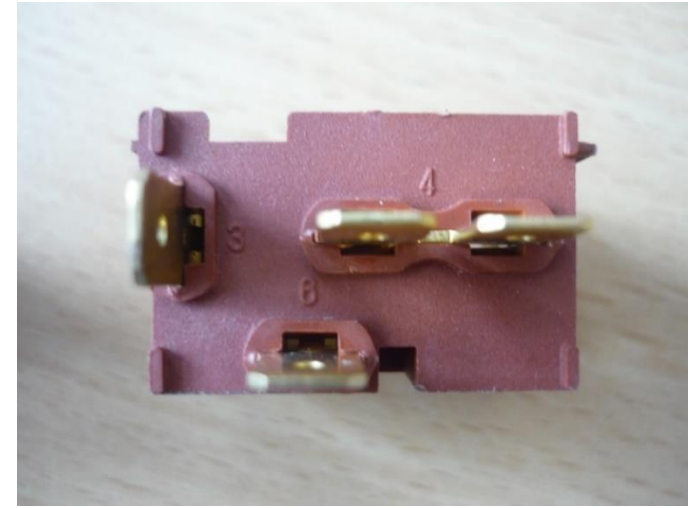
Differential-screw in contact-house

Imitation of Danfoss 077B thermostat compared with Danfoss original



Danfoss

Contact system (ID no. 3 and 6 for connection is placed different)



Imitation

Contact system



avrorarm.ru
+7 (495) 956-62-18