



Type 6128 can be combined with...



Type 2507

Cable Plug

2/2- or 3/2-way- Rocker Solenoid Valve

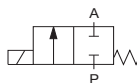
- Direct acting
- Hermetic isolation of fluid
- Vacuum to 10 bar¹⁾
- Orifice 2 or 3 mm
- Manual override as standard
- Sub-base and threaded port version
- 22 mm width per station

Note

This Type will be replaced by 6628 in 2013

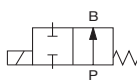
The 6128 analytical solenoid valve combines all state of the art features in a compact design. With high reliability, virtually no heat transfer between fluid and coil, low internal volume and Burkert's expertise in supplying customized solutions, these valves are a perfect fit even for the most demanding applications.

Circuit function A



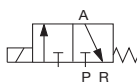
2/2-way valve,
direct acting,
normally closed

Circuit function B



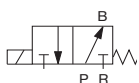
2/2-way valve,
direct acting,
normally open

Circuit function C



3/2-way valve,
direct acting, when
de-energised Port A
exhausted

Circuit function D



3/2-way valve,
direct acting, when
de-energised Port B
pressurised

Technical data

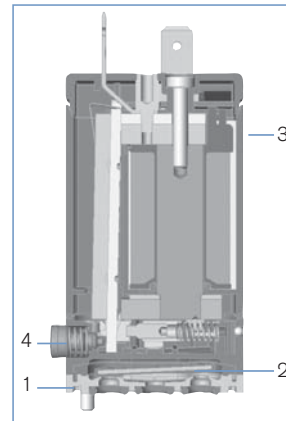
Body material	G, NPT connection subbase connection	PEEK and PPS PPS
Seal material		EPDM or FKM
Medium		Resistant to neutral and slightly aggressive fluids (see chemical resistance chart); technical vacuum
Medium temperature		0 °C ... +70 °C
Ambient temperature		0 °C ... +60 °C
Viscosity		max. 21 mm ² /s
Port connection		Sub-base G 1/8 NPT 1/8 on request
Operating voltages		24 V DC, 230 V / 50 Hz Other voltages on request
Voltage tolerance		± 10%
Power consumption		5 W
Duty cycle		100 % continuous rating
Electrical connection		▪ Acc. to Form B industrial standard for cable plug Type 2507 ▪ Rectangular plug ▪ 500mm leads on request
Manual override		Standard
Installation		As required, preferably with actuator upright
Protection class		IP40

¹⁾ Pressure values [bar]: Measured as overpressure to the atmospheric pressure

Response times

Circuit function	Orifice DN [mm]	Kv value water [m³/h]	QNn-value air [l/min]	Pressure range [bar]	Response times		Max. pressure difference [bar]
					opening [ms]	closing [ms]	
A	2	0,1	104	Vacu-10	18	8	10
	3	0,13	136	Vacu-3	18	8	3
B	2	0,1	104	Vacu-10	18	8	10
	3	0,13	136	Vacu-3	18	8	3
C	2	0,1	104	Vacu-10	18	8	10
	3	0,13	136	Vacu-3	18	8	3
D	2	0,1	104w	Vacu-10	18	8	10
	3	0,13	136	Vacu-3	18	8	3

- Kv value [m³/h]: Flow rate for water, Measured at +20 °C, 1 bar¹⁾ pressure difference
- Response times [ms]: Measured at valve outlet at 3 bar¹⁾ and +20°C according to ISO 12238.
Opening Pressure rise from 0...10%
Closing Pressure drop from 100...90%

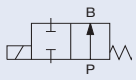
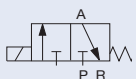
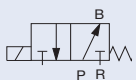


1. Valve body, PEEK / PPS
2. Diaphragm, EPDM or FKM
3. Coil body, PA
4. Manual override, PA

Ordering chart

Circuit function	Orifice DN [mm]	Body material	Seal material	Voltage/ frequency [V/ Hz]	Port connection	Electrical connection	Item no.
A 	2.0	PPS	FKM	24 V/DC	Sub-base	Rectangular plug	160 758
						Tag connector Form B	160 759
		PEEK/ PPS	G 1/8	Rectangular plug	160 760		
				Tag connector Form B	160 761		
		PPS	EPDM	24 V/DC	Sub-base	Rectangular plug	160 763
						Tag connector Form B	160 764
	PEEK/ PPS	G 1/8	Rectangular plug	160 765			
			Tag connector Form B	160 766			
	3.0	PPS	FKM	24 V/DC	Sub-base	Rectangular plug	160 767
						Tag connector Form B	160 768
		PEEK/ PPS	G 1/8	Rectangular plug	160 769		
				Tag connector Form B	160 770		
PPS		EPDM	24 V/DC	Sub-base	Rectangular plug	160 771	
					Tag connector Form B	160 772	
PEEK/ PPS	G 1/8	Rectangular plug	160 773				
		Tag connector Form B	160 774				
B 	2.0	PPS	FKM	24 V/DC	Sub-base	Rectangular plug	160 775
						Tag connector Form B	160 776
		PEEK/ PPS	G 1/8	Rectangular plug	160 777		
				Tag connector Form B	160 778		
		PPS	EPDM	24 V/DC	Sub-base	Rectangular plug	160 779
						Tag connector Form B	160 780
PEEK/ PPS	G 1/8	Rectangular plug	160 781				
		Tag connector Form B	160 782				

Ordering chart (continued)

Circuit function	Orifice DN [mm]	Body material	Seal Material	Voltage/frequency [V/Hz]	Port Connection	Electrical connection	Item no.
B 	2.0	PPS	EPDM	24 V/DC	Sub-base	Rectangular plug	160 782
						Tag connector Form B	160 783
		PEEK/PPS		G 1/8	Rectangular plug	160 784	
					Tag connector Form B	160 785	
		230 V/50 Hz		G 1/8	Tag connector Form B	160 786	
					Tag connector Form B	160 787	
	3.0	PPS	FKM	24 V/DC	Sub-base	Rectangular plug	160 787
						Tag connector Form B	160 788
		PEEK/PPS		G 1/8	Rectangular plug	160 789	
					Tag connector Form B	160 790	
		230 V/50 Hz		G 1/8	Tag connector Form B	160 791	
					Tag connector Form B	160 792	
3.0	PPS	EPDM	24 V/DC	Sub-base	Rectangular plug	160 792	
					Tag connector Form B	160 793	
	PEEK/PPS		G 1/8	Rectangular plug	160 794		
				Tag connector Form B	160 795		
	230 V/50 Hz		G 1/8	Tag connector Form B	160 796		
				Tag connector Form B	160 796		
C 	2.0	PPS	FKM	24 V/DC	Sub-base	Rectangular plug	160 797
						Tag connector Form B	150 790
		PEEK/PPS		G 1/8	Rectangular plug	160 798	
					Tag connector Form B	160 799	
		230 V/50 Hz		G 1/8	Tag connector Form B	160 800	
					Tag connector Form B	160 801	
	3.0	PPS	FKM	24 V/DC	Sub-base	Rectangular plug	160 801
						Tag connector Form B	150 791
		PEEK/PPS		G 1/8	Rectangular plug	160 802	
					Tag connector Form B	160 803	
		230 V/50 Hz		G 1/8	Tag connector Form B	160 804	
					Tag connector Form B	160 805	
3.0	PPS	FKM	24 V/DC	Sub-base	Rectangular plug	160 805	
					Tag connector Form B	150 792	
	PEEK/PPS		G 1/8	Rectangular plug	160 806		
				Tag connector Form B	160 807		
	230 V/50 Hz		G 1/8	Tag connector Form B	160 808		
				Tag connector Form B	160 809		
3.0	PPS	EPDM	24 V/DC	Sub-base	Rectangular plug	160 809	
					Tag connector Form B	150 793	
	PEEK/PPS		G 1/8	Rectangular plug	160 810		
				Tag connector Form B	160 811		
	230 V/50 Hz		G 1/8	Tag connector Form B	160 812		
				Tag connector Form B	160 812		
D 	2.0	PPS	FKM	24 V/DC	Sub-base	Rectangular plug	160 813
						Tag connector Form B	150 080
		PEEK/PPS		G 1/8	Rectangular plug	160 814	
					Tag connector Form B	160 815	
		230 V/50 Hz		G 1/8	Tag connector Form B	160 816	
					Tag connector Form B	160 817	
	3.0	PPS	FKM	24 V/DC	Sub-base	Rectangular plug	160 817
						Tag connector Form B	150 794
		PEEK/PPS		G 1/8	Rectangular plug	160 818	
					Tag connector Form B	160 819	
		230 V/50 Hz		G 1/8	Tag connector Form B	160 820	
					Tag connector Form B	160 821	
3.0	PPS	FKM	24 V/DC	Sub-base	Rectangular plug	160 821	
					Tag connector Form B	150 795	
	PEEK/PPS		G 1/8	Rectangular plug	160 822		
				Tag connector Form B	160 823		
	230 V/50 Hz		G 1/8	Tag connector Form B	160 824		
				Tag connector Form B	160 825		
3.0	PPS	EPDM	24 V/DC	Sub-base	Rectangular plug	160 825	
					Tag connector Form B	150 796	
	PEEK/PPS		G 1/8	Rectangular plug	160 826		
				Tag connector Form B	160 827		
	230 V/50 Hz		G 1/8	Tag connector Form B	160 828		
				Tag connector Form B	160 828		

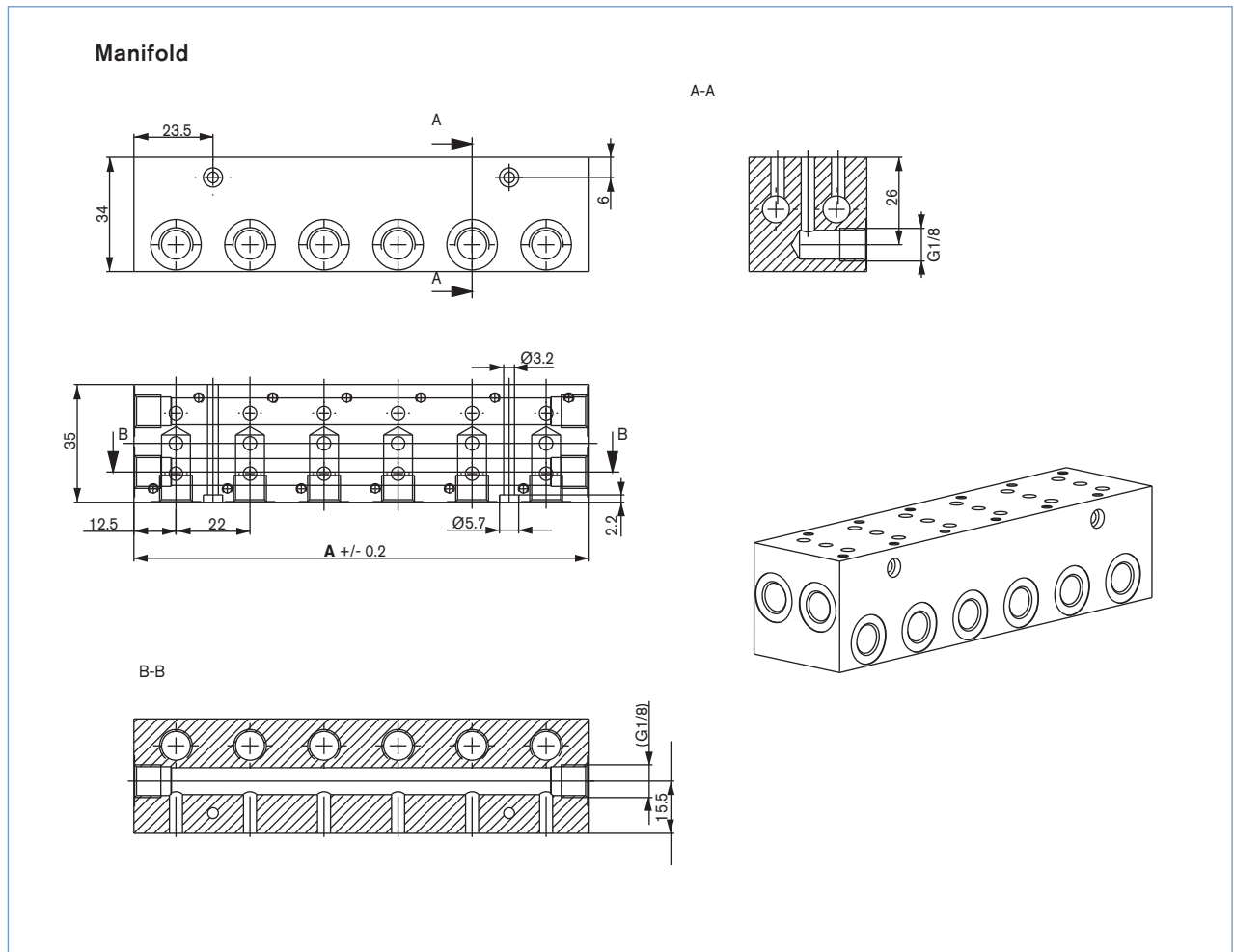
- Rectangular plug supplied **without** cable plug (see ordering chart for accessories).
- Manual override as standard.
- Other versions on request.

Ordering chart for manifold

Multiple Manifolds with individual service port (G1/8) and diverter function on 2 common channels (G1/8);
Delivery without valves; Material: anodized aluminium


Manifold	A [mm]	Item no.
2-fold	47	669 571
3-fold	69	672 633
4-fold	91	669 572
5-fold	113	672 661
6-fold	135	669 570
10-fold	223	672 660

▪ Other versions on request.



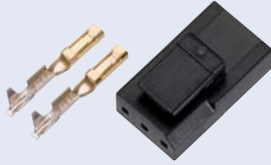


Ordering chart for accessories

Cable Plug Type 2507 according to Industrial standard Form B

	Accessories	Version	Voltage	Item no.
	Cable Plug Type 2507	without Circuitry	0 ... 250 V AC/DC	423 845
		with LED	24 V AC/DC	423 849

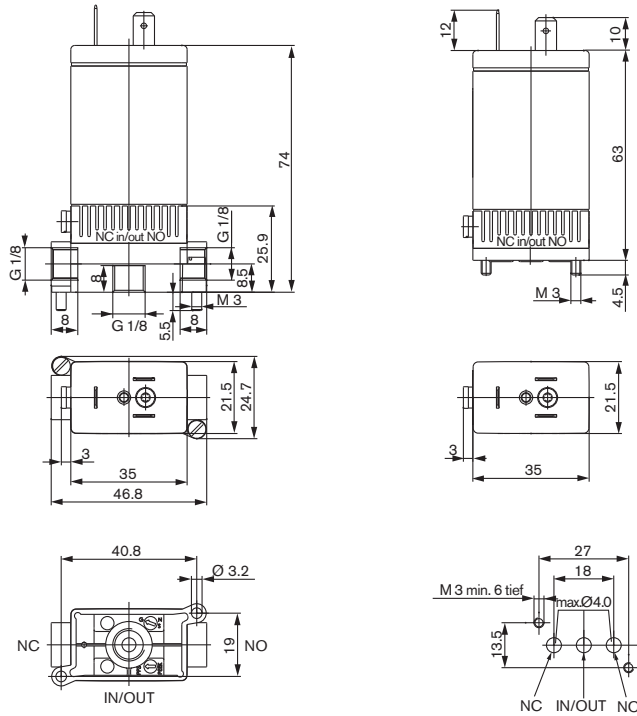
Rectangular plug Type 2505

	Accessories	Item no.
	with 3m cable	133 486
	with 300mm leads	644 068
	Single contact for individual mounting	644 067

Dimensions [mm]

Valves with tag connector Form B - Industrial standard

(The middle connection is not applicable in the case of the 2/2-way version)

Threaded port body G1/8 manifold mounting
(2xM3 screws)Flange interface for manifold mounting
(2xM3 screws)

Valves with rectangular plug

