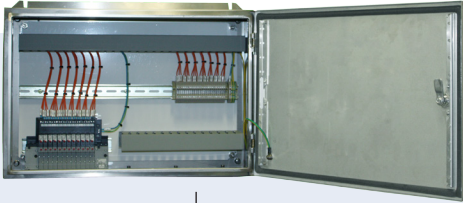
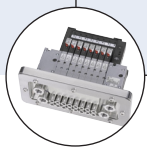


Smart Panel using AirLINE Quick



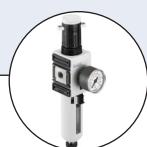
- Fast assembly with minimal labour requirement
- Robust for arduous environments
- Certified IP66 ingress protection
- Pneumatic and electro-pneumatic cabinets

Smart Panels can be combined with...



Type 8640

AirLINE Quick valve manifold



Type TPM

Filter regulator assembly



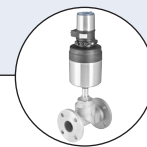
Type 8801

ELEMENT on/off control valve



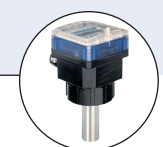
Type 8222

ELEMENT conductivity sensor



Type 8802

ELEMENT modular control valve



Type 8045

Insertion magflow meter

Smart Panels with AirLINE Quick offer a flexible and modular pneumatic or electro-pneumatic control cabinet solution. Using high-tech assembly procedures and standardised production components, these cabinets are produced effectively without labour. This development in next-gen production techniques has dramatic implications for improved delivery times and pricing.

The system also offers advances relative to alternatives, with high IP66 protection for dusty, wet, and caustic wash down environments. Designed for the Australian and New Zealand markets, this solution addressed local industry needs and certifications. The system also expands possibilities for partnership as an OEM partner for local control cabinet manufacturers and specialised supplies to regional industry.

Applications

- Pneumatic valve banks
- Valve banks with I/O
- Wet environments
- Mineral processing environments
- Food & beverage wash down areas

Technical data, AirLINE Quick Smart Panels

Cabinet enclosure	
Cabinet (options)	Powder coated steel (RAL 7032), or Stainless steel 316L
Internal mounting plate	Zinc steel, painted gloss white
Cabinet sizes [mm]	
Small	350H x 250W x 200D
Medium	400H x 600W x 200D
Large	600H x 600W x 200D
Extra large	800H x 800W x 300D
Ingress protection certification	IP66 [rated for dusty environments, flooding water to 1m]
Valve positions possible	
Type 8640 pneumatic	Manifolds for 4, 8, 12, or 16 valve stations
Type 8644 pneumatic & I/O	Manifolds for 8, 12, 16, or 24 valve stations plus I/O
Valve functions	
Standard	3/2 NO, 3/2 NC, 3/2 dual function high density, 5/2
Hot swap versions	3/2, 3/2 high density, 5/2
Valve flow rate	300 l/min [hot swap versions to 200 l/min]
Pressure range	Vac. to 10 bar
Feedbacks [Type 8640]	Maximum 32 feedbacks
Electrical connections [for Type 8640]	Terminal connection (pre-wired screwed) Multipin connection (Sub D 25 pin) [on request: Profibus DP, DeviceNet, CANopen, Profinet IO, Ethernet IP, Modbus TCP]
Connection & I/O providers [for Type 8644]	Siemens, Rockwell (Allen-Bradley), Wago [on request: GE Versapoint, Phoenix InLINE, Beckhoff]
Ambient temperature	0 to +55°C
Operating voltage	24V DC, 1W (rated for continuous operation)

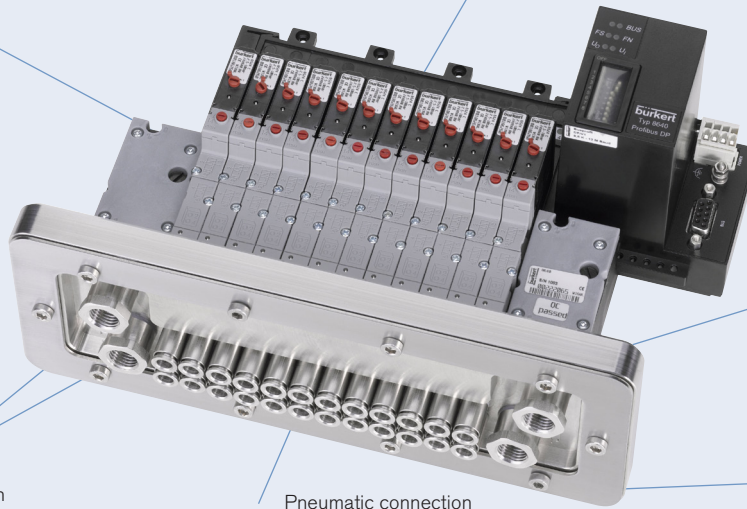
AirLINE Quick

Shows manifolds and options that are in the standard Smart Panel programme

AirLINE Quick Type 8640 pneumatic manifold

Valve function per manifold Type 8640: 4, 8, 12, 16

Valve width 11 mm



Adapter plate in stainless steel 316L

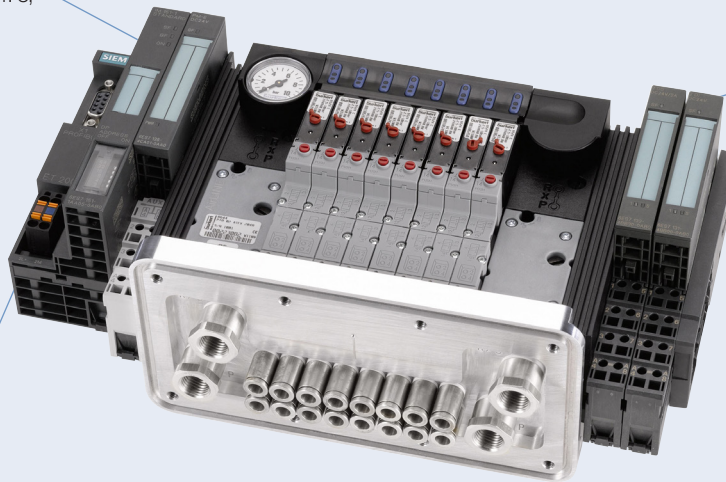
Pneumatic connection supply ports in stainless steel:
- G 1/4

Pneumatic connection working ports in stainless steel:
- push-in 6mm
- G 1/4

Stabilising metal plate is fixed on the outside of the control cabinet

AirLINE Quick Type 8644 pneumatic manifold with I/O

Valve function per manifold Type 8644: 8, 12, 16, 24



Siemens ET 200S, PM-E 24 V DC power module

Siemens ET 200S interface

AirLINE Quick Type 8644 with Siemens, Rockwell (Allen Bradley) and Wago also available in standard Smart Panel programme

Smart Panel cabinets

Shows cabinets and options that are in the standard Smart Panel programme

Certified IP66

Stainless steel 316L, or Powder Coated Steel (RAL 7032)

Cutout in base for AirLINE Quick manifold

Sizes in standard programme:
 Small: 350H x 250W x 200D
 Medium: 400H x 600W x 200D
 Large: 600H x 600W x 200D
 Extra large: 800H x 800W x 300D

Small cabinet
350H x 250W x 200D

Medium cabinet
400H x 600W x 200D

Large cabinet
600H x 600W x 200D

Extra large cabinet
800H x 800W x 300D

Wall mounting bracket for panel
 Material: Stainless steel 316L
 Versions to suit cabinet widths:
 - 250mm wide
 - 600mm wide
 - 800mm wide

Cabinets shown are part of the standard Smart Panel programme; all cabinet sizes are available with Bürkert Systems

DTS 1000239590 EN Version: - Status: RL (released | freigegeben | valide) printed: 19.01.2015

Air preparation

Shows air preparation units that are in the standard Smart Panel programme

Filter regulator assembly

Complete assembly mounts direct with Smart Panel and conditions pneumatic air (or gas) for use

Sizes:
 - G1/4 for 4 - 12 valves
 - G1/2 for 16 - 24 valves



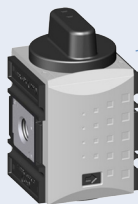
PlasticGrivory GV-6H with 60 % glass fiber

Pressure 1.5 - 12 bar

Filter 5 µm

Includes filter regulator, gauge & mounting bracket

Isolation valve kit



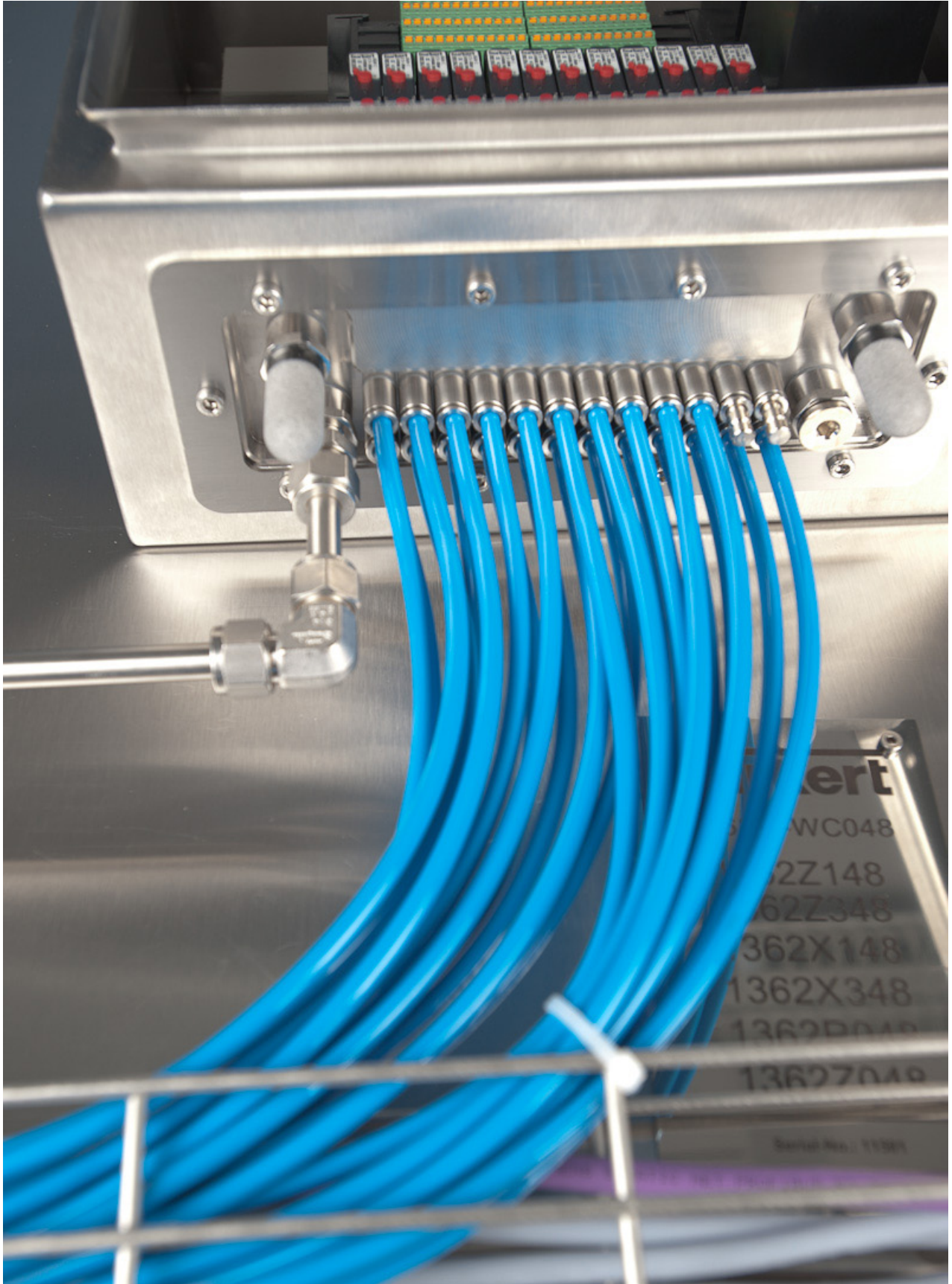
Pad-lockable handle

Sizes:
 - G1/4 for 4 - 12 valves
 - G1/2 for 16 - 24 valves

Number of valves	Recommended air preparation devices
4 Station	G 1/4
8 Station	
12 Station	
16 Station	G 1/2
24 Station	

Air preparation units shown are part of the standard Smart Panel programme; all air prep options and sizes are available with Bürkert Systems

Smart Panel



DTS 1000239590 EN Version: - Status: RL (released | freigegeben | valide) printed: 19.01.2015

Smart Panel specification sheet

Please complete and send to Bürkert for prompt quotation and response.

Company	Contact person
Address	Position/Department
Suburb	Telephone
State, Postcode	Email

Quantity Required delivery date

AirLINE Quick manifold

Valve function	<input type="checkbox"/> 3/2 way <i>For spring return actuators</i>	<input type="checkbox"/> Dual 3/2 way, high density <i>For compact valve banks</i>	<input type="checkbox"/> 5/2 way <i>For double-acting actuators</i>
Hot swap functionality	<input type="checkbox"/> I want Hot Swap so I can replace valves while the system is operating		
Valve positions per manifold <i>[NB: 1 dual 3/2 valve = 1 position]</i>	<input type="checkbox"/> 04 <i>[8640 only]</i>	<input type="checkbox"/> 08	<input type="checkbox"/> 12
		<input type="checkbox"/> 16	<input type="checkbox"/> 24 <i>[8644 only]</i>
Type of valve bank	<input type="checkbox"/> Type 8640 pneumatic valve bank	<input type="checkbox"/> Type 8644 pneumatic valve bank with I/O	
Electrical connection	<input type="checkbox"/> Terminal	<input type="checkbox"/> Multipole	<input type="checkbox"/> Siemens <input type="checkbox"/> Rockwell <input type="checkbox"/> Wago
		<input type="checkbox"/> Multipole 5m cable	
		<input type="checkbox"/> Multipole 10m cable	

Siemens	Rockwell	Wago
Profibus DP Basic <input type="checkbox"/>	Ethernet IP 1port <input type="checkbox"/>	Ethernet 1port <input type="checkbox"/>
Profibus DP Std <input type="checkbox"/>	Ethernet IP 2port <input type="checkbox"/>	ProfiNET 2port <input type="checkbox"/>
Profibus DP Hi Feat <input type="checkbox"/>	ControlNET <input type="checkbox"/>	ProfiBUS <input type="checkbox"/>
ProfiNET <input type="checkbox"/>	DeviceNET <input type="checkbox"/>	DeviceNET <input type="checkbox"/>

If I/O Required: DI DO AI AO Other

Cabinet

Cabinet size	<input type="checkbox"/> Use smallest cabinet possible for my needs	<input type="checkbox"/> I want a larger cabinet to fit other components [note specialised needs below]
Cabinet material	<input type="checkbox"/> Stainless steel 316L <i>Uses stainless steel valve mounting plate</i>	<input type="checkbox"/> Powder coated steel, RAL 7032 <i>Uses aluminium valve mounting plate</i>
Mounting bracket	<input type="checkbox"/> I want a mounting bracket to connect the cabinet to the wall	

Air preparation

Filter regulator kit	<input type="checkbox"/> I want a filter regulator kit, that includes filter regulator, gauge & wall mounting bracket <i>Note: Filter regulator assembly is typically mounted on a wall external to the cabinet</i>
Filter regulator & isolation valve kit	<input type="checkbox"/> I want an isolation valve kit, that includes a filter regulator kit (kit described above) and an isolation valve & coupling kit

Notes