

II 2G Ex de IIC T5/T4 Gb  
 II 2D Ex tb IIIC T135°C Db

REMATIC, DMS3,  
 24 V DC (2P )  
 (3P )  
 PROFIBUS DP V0/V1 MODBUS RTU.  
 : LED ( RS-232).  
 a a  
 « - ».



### DMS3

- 3x380 VAC
- 
- 
- T
- a
- 60 % 100 %
- 
- 
- 7 R1, R2, RE1...RE 5 (18 )
- READY
- - 0/4 - 20 mA, 4 - 12 mA, 12 - 20 mA 0/2 - 10 V
- 24 V DC - , ,
- 24 V DC - , ,
- 
- ESD ( )
- - 4 - 20 mA a ( )
- 24 V DC, 40
- ( , , .)
- 
- LED
- RS 232
- 
- IP 66
- 
- 
- PROFIBUS DP V0/V1,
- MODBUS RTU,

MOR 5PA-Ex

168.	x	-	x	x	x	x	x	/	x	x
------	---	---	---	---	---	---	---	---	---	---

15150	3.1	60721-2-1	(R)+WDr, MWDr, EWDr	-20°C	+60°C	C3	T4	IP 66	1
			(M)	-50°C	+40°C	C4			2
				-20°C	+60°C	C3	T5		3
				-20°C	+60°C		T4		6
			(WW)	-50°C	+40°C	C4	T5		7

c	50 Hz	Y/D 400/230 V AC	Z501b; Z556b; Z557b; Z571	2
		Y/D 380/220 V AC		N
		Y/D 400/230 V AC	Z501c; Z556c; Z557c; Z571a	E
		Y/D 380/220 V AC		F

31)	32)	33)	3x400 (380) V, 50Hz				35)		
			500 Nm	300 Nm	200 Nm	15 min <sup>-1</sup>		1.5 kW	710 min <sup>-1</sup>
					20 min <sup>-1</sup>	2.2 kW	960 min <sup>-1</sup>	5.2 A	F
					40 min <sup>-1</sup>	3.0 kW	1 415 min <sup>-1</sup>	6.6 A	J
					60 min <sup>-1</sup>	4.0 kW	1 435 min <sup>-1</sup>	8.1 A	M
					100 min <sup>-1</sup>	5.0 kW	1 420 min <sup>-1</sup>	11.1 A	Q
					15 min <sup>-1</sup>	1.5 kW	710 min <sup>-1</sup>	4.15 A	B
					20 min <sup>-1</sup>	2.2 kW	960 min <sup>-1</sup>	5.2 A	E
					40 min <sup>-1</sup>	3.0 kW	1 415 min <sup>-1</sup>	6.6 A	H
					60 min <sup>-1</sup>	4.0 kW	1 435 min <sup>-1</sup>	8.1 A	L
					100 min <sup>-1</sup>	5.0 kW	1 420 min <sup>-1</sup>	11.1 A	P
					15 min <sup>-1</sup>	1.5 kW	710 min <sup>-1</sup>	4.15 A	A
					20 min <sup>-1</sup>	2.2 kW	960 min <sup>-1</sup>	5.2 A	D
					40 min <sup>-1</sup>	3.0 kW	1 415 min <sup>-1</sup>	6.6 A	G
					60 min <sup>-1</sup>	4.0 kW	1 435 min <sup>-1</sup>	8.1 A	K

20	1 - 800			H
	1 - 800	LCD	41)	Z473a

DMS3	2P	24 V DC			Z557b; Z557c	F	
	3P/2P	0/4 - 20 mA	24 V DC	4 - 20 mA	Z501b; Z501c	G	
		0/2 - 10 V			Z556b; Z556c	H	
DMS3 M1	/ 2P	MODBUS RTU		24 V DC	-	Z571; Z571a	M
DMS3 M2							N
DMS3 P1		PROFIBUS DP V0 / V1					P
DMS3 P2							R

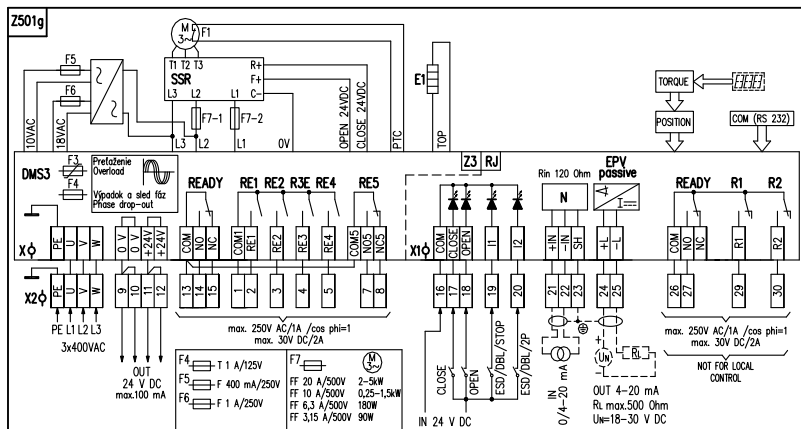
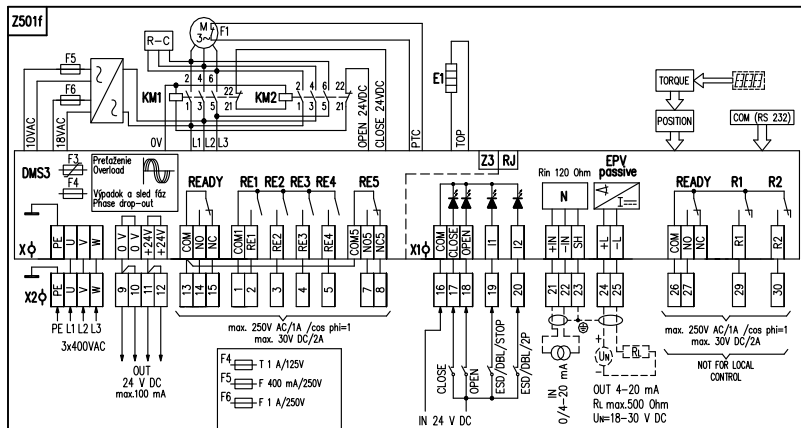
	ISO 5210	F16	B3	Ø40	P-1424	P-1424/B	B	
	DIN 3338	F16	C	24/Ø55/Ø80		P-1424/C	C	
		G3 (F16)	D	Ø40	P-1424/D	D		
	55510	Ø220/4xM20/Ø155	V(B)	5	35°/37°	Ø70/Ø85	P-1425; P-1425/1	G
		Ø330/4xM20/Ø240	G( )	5	35°/37°	Ø70/Ø148	P-1425; P-1425/2	U
	ISO 5210	F16	A		TR52	P-1424 P-1424/A	A	

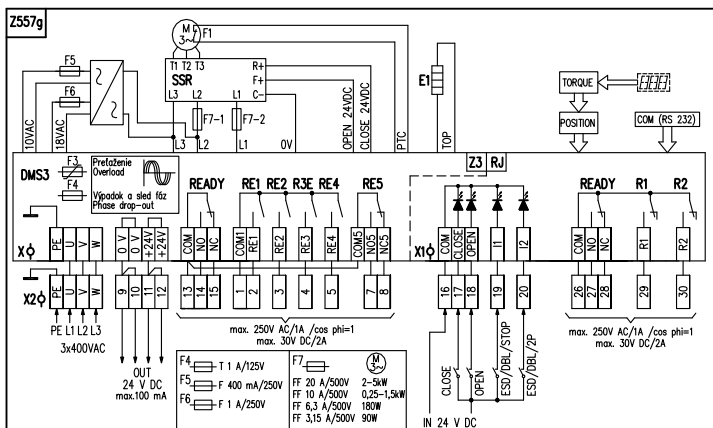
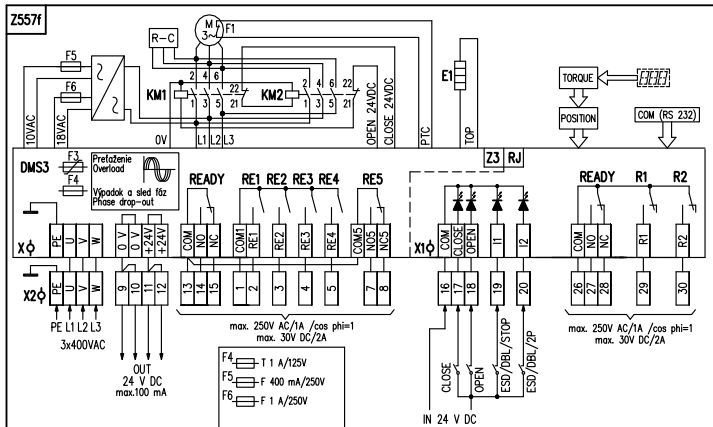
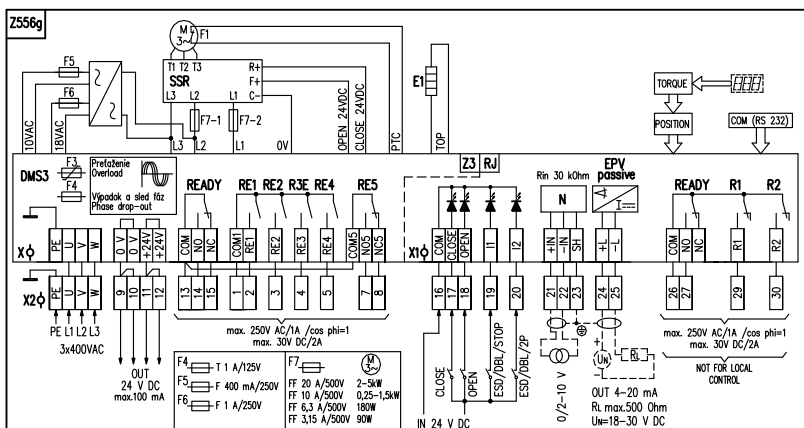
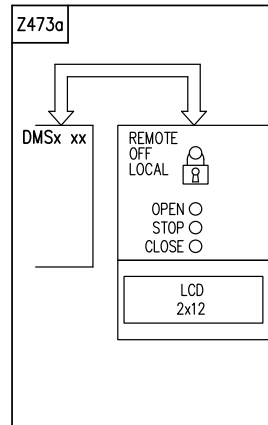
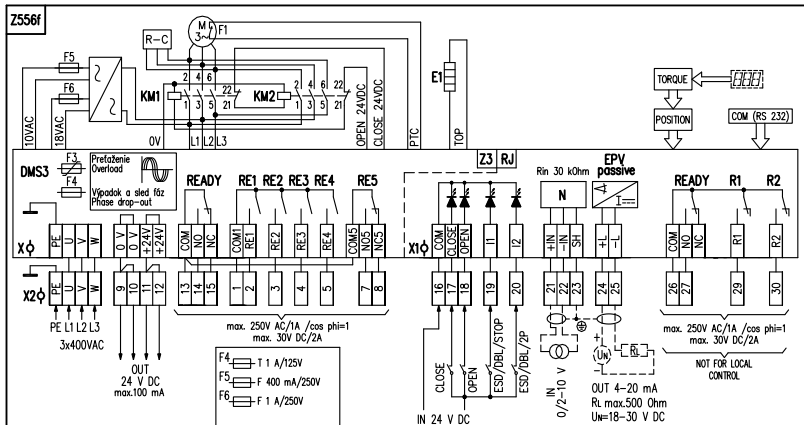
MOR 5PA-Ex

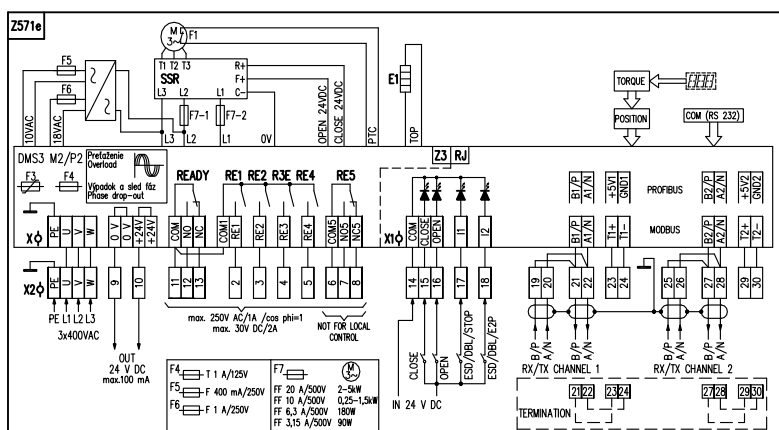
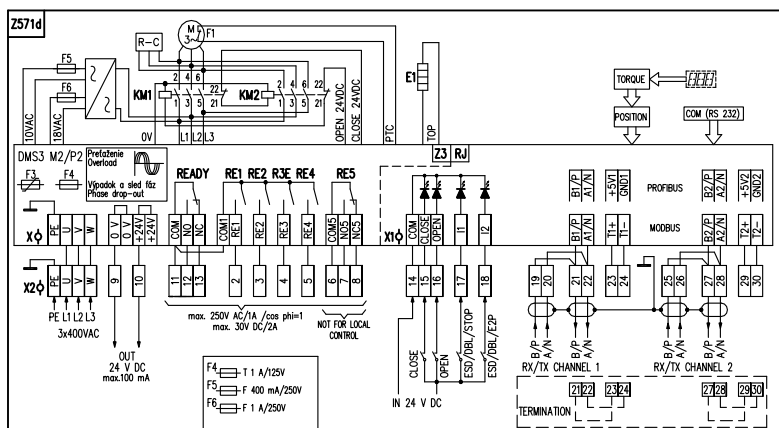
168.										x	-	x	x	x	x	x	x	/	x	x		
/																						
20																						
A																			0	0		
B																			0	1		
: A+B=20																						
DB-9F/RJ45										DMS3									224 A80 100			

- 10) :
- 31) « » .2. 60 100 %.
- 32) S2-10 min a S4-25%
- 33) S4-25% 90 1200 /
- 41) LCD -25°C

MOR 5PA-Ex







:  
 - , ma . 0,08 2,5 34,  
 - : 1x M16x1,5 6,5 9,5  
 2x M25x1,5 9 13  
 2x 4x M16x1,5 MODBUS/PROFIBUS 6,5 9,5 2,5 6

PE, U, V, W (0,05 - 2,5 mm<sup>2</sup>) (3x400 / 3x380 V AC, 50 Hz)  
 0 V, +24 V (0,05 - 1 mm<sup>2</sup>) 24 V DC (100 mA)  
 COM, CLOSE OPEN, I1, I2 ... (0,05 - 1 mm<sup>2</sup>) 24 V DC  
 +IN, -IN, SH (0,05 - 1 mm<sup>2</sup>) 0/4-20 mA  
 +L, -L (0,05 - 1 mm<sup>2</sup>) ( ) 4-20 mA  
 COM, NO, NC (0,05 - 1,5 mm<sup>2</sup>) READY ( )  
 R1, R2 (0,05 - 1,5 mm<sup>2</sup>) R1, R2 ( )  
 COM, NO, NC (0,05 - 1,5 mm<sup>2</sup>) READY ( )  
 COM1, RE1, RE2, RE3, RE4 ... (0,05 - 1,5 mm<sup>2</sup>) RE1 RE4 ( )  
 COM5, NO, NC (0,05 - 1,5 mm<sup>2</sup>) RE5 ( )

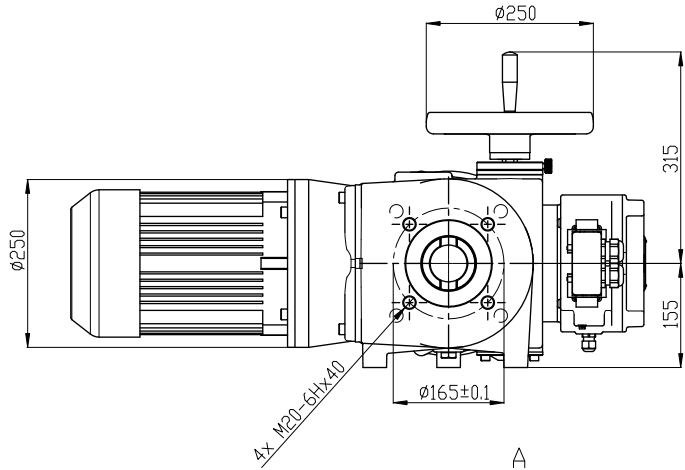
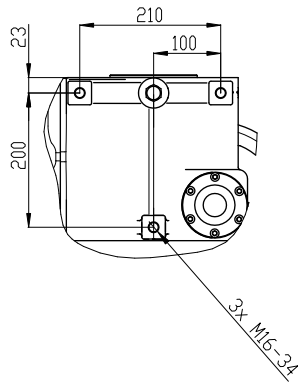
READY R 1 R 2 READY R1 R2

Z473.....			o o		
Z501f.....	4-20 mA	a		0/4 - 20 mA	c
Z501g.....	4-20 mA	a		0/4 - 20 mA	c
Z556f.....	4-20 mA	a		0/2 - 10 V	c
Z556g.....	4-20 mA	a		0/2 - 10 V	c
Z557f.....					
Z557g.....					
Z571d.....				MODBUS / PROFIBUS	c
Z571e.....				MODBUS/PROFIBUS	c

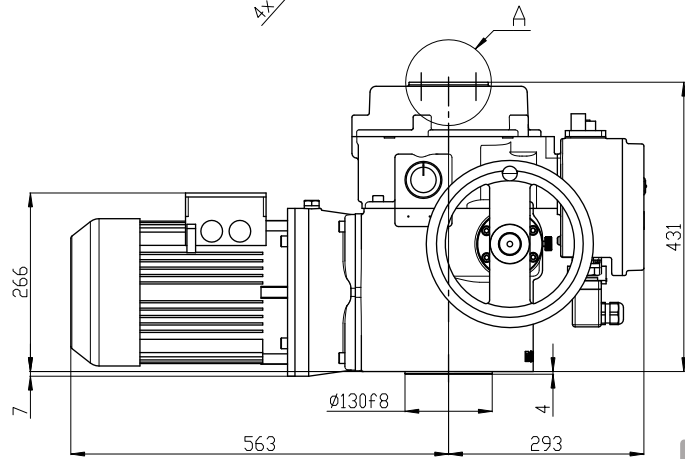
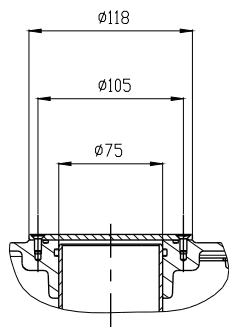


MOR 5PA-Ex

→ P



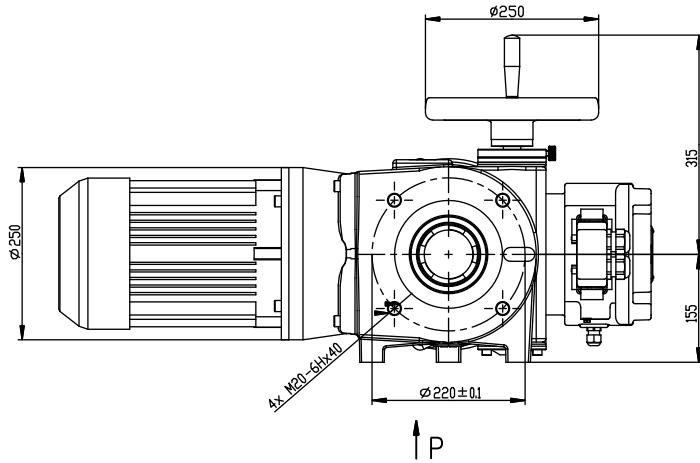
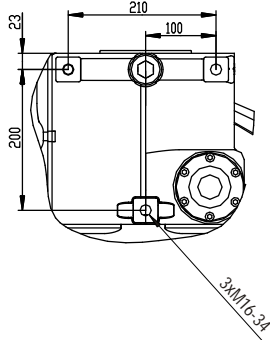
A



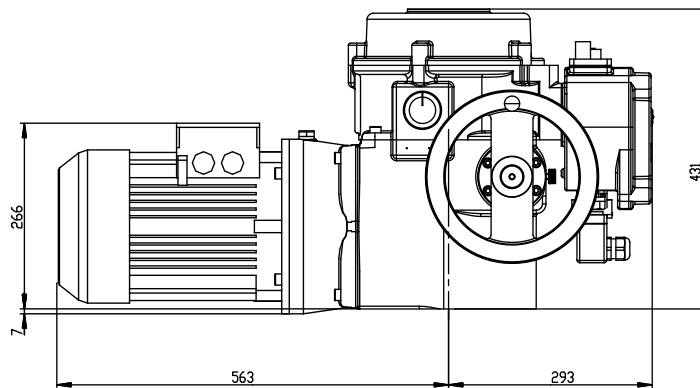
P-1424/B, C, D.

P-1424

→ P



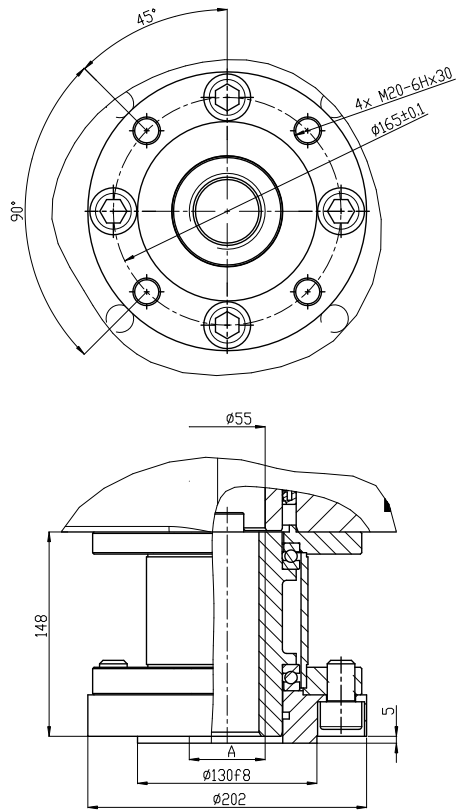
↑ P



P-1425/1 2.

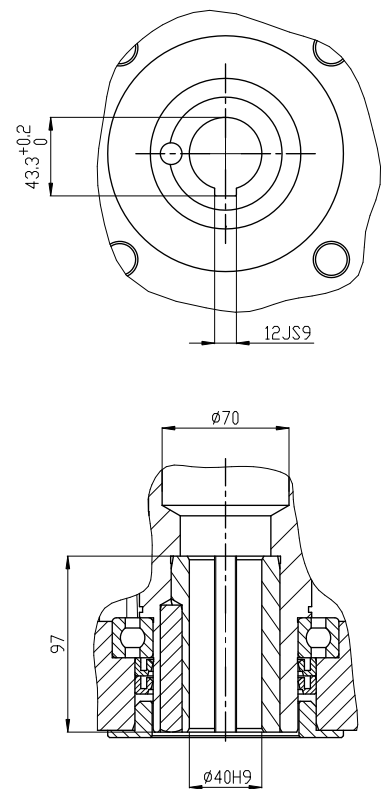
P-1425

A



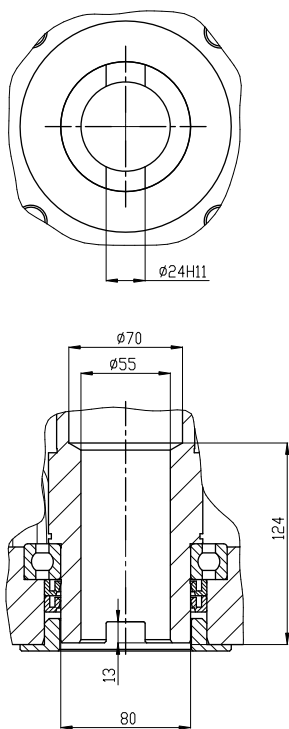
P-1424/A

B3



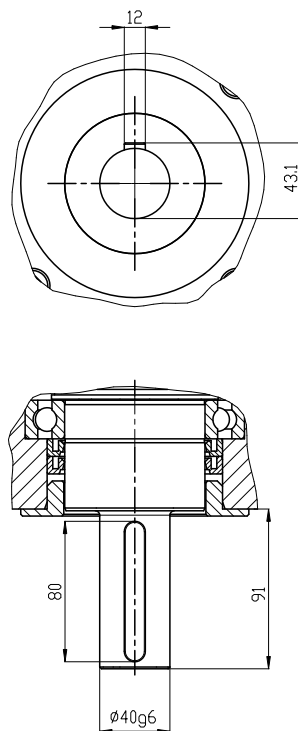
P-1424/B

C



P-1424/C

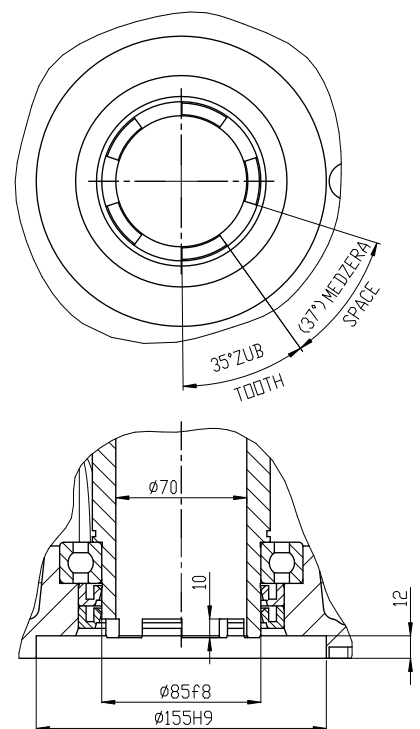
D



P-1424/D

5

55510



P-1425/1