

REMATIC, DMS3,
24 V DC (2P)
(3P)
PROFIBUS DP V0/V1 MODBUS RTU.
LED (RS-232).
a a
« - ».



DMS3

- 3x380 VAC
-
- T
- a
- 60 % 100 %
-
-
- 7 R1, R2, RE1...RE 5 (18)
- 2 READY
- - 0/4 - 20 mA, 4 - 12 mA, 12 - 20 mA 0/2 - 10 V
- 24 V DC - , ,
- 24 V DC - , ,
-
- ESD ()
- - 4 - 20 mA a ()
- 24 V DC, 100
-
- LED
- (, ,)
- RS 232
- : ISO 5210 / F16- B3, C, D 55510 ()
-
-
- PROFIBUS DP V0/V1,
- MODBUS RTU,
- ISO 5210 / F16- ()
- IP 67

MOR 5PA

158. x - x x x x x / x x

10)		12)		o e			
15150	()	60721-2-1	(R)+WDr, MWDr, EWDr	C3	-25°C +55°C	IP 55	0
				C4	-25°C +55°C	IP 67	1
	()	(M)	C3	-40°C +40°C	IP 67	3	
	()	(WW)	C3	-25°C +55°C	IP 67	6	
	()	(WW)	C4	-40°C +40°C	IP 67	7	

		50 Hz		Y/D 400/230 V AC	Z501b; Z556b; Z557b	2
				Y/D 380/220 V AC	Z571	N
		c		Y/D 400/230 V AC	Z501c; Z556c; Z557c;	E
				Y/D 380/220 V AC	Z571a	F

31)		32)		33)		35)		
		« »				3x400 (380) V, 50Hz		
500 Nm	300 Nm	200 Nm	-	15 min ⁻¹	1 100 W	680 min ⁻¹	2.9 A	C
				20 min ⁻¹	1 500 W	925 min ⁻¹	3.9 A	F
				40 min ⁻¹	2 200 W	1 420 min ⁻¹	4.7 A	J
				60 min ⁻¹	2 200 W			
				100 min ⁻¹	3 000 W			
630 Nm	380 Nm	250 Nm	-	15 min ⁻¹	1 100 W	680 min ⁻¹	2.9 A	B
				20 min ⁻¹	1 500 W	925 min ⁻¹	3.9 A	E
				40 min ⁻¹	2 200 W	1 420 min ⁻¹	4.7 A	H
				60 min ⁻¹	3 000 W			
				100 min ⁻¹	4 000 W			
1 000 Nm	600 Nm	400 Nm	-	15 min ⁻¹	1 500 W	705 min ⁻¹	3.9 A	A
				20 min ⁻¹	2 200 W	940 min ⁻¹	5.2 A	D
				40 min ⁻¹	3 000 W	1 420 min ⁻¹	6.4 A	G
				60 min ⁻¹	4 000 W	1 440 min ⁻¹	8.2 A	K

20		1 - 800				H
		1 - 800	LCD	41)	Z473a	E

DMS3	2P	24 V DC				Z557b; Z557d	F
	3P/2P	0/4 - 20 mA	24 V DC		4 - 20 mA	Z501b; Z501d	G
		0/2 - 10 V				Z556b; Z556d	H
DMS3 M1	/2P	MODBUS RTU		24 V DC	-	Z571 Z571a	M
DMS3 M2							N
DMS3 P1							P
DMS3 P2							R

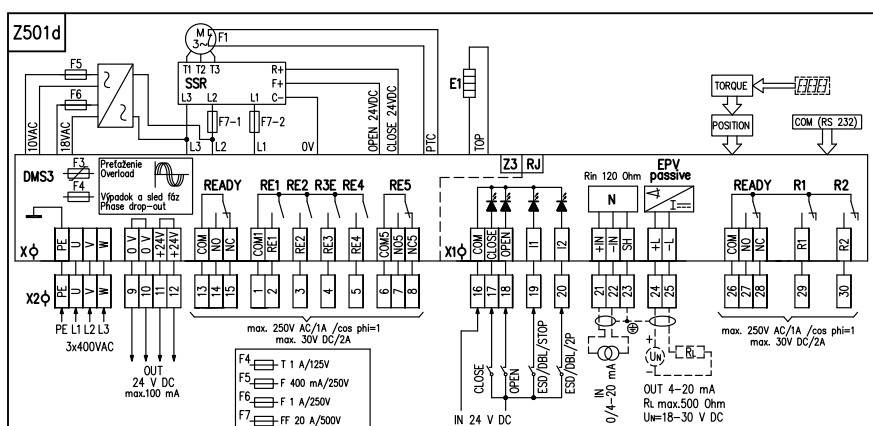
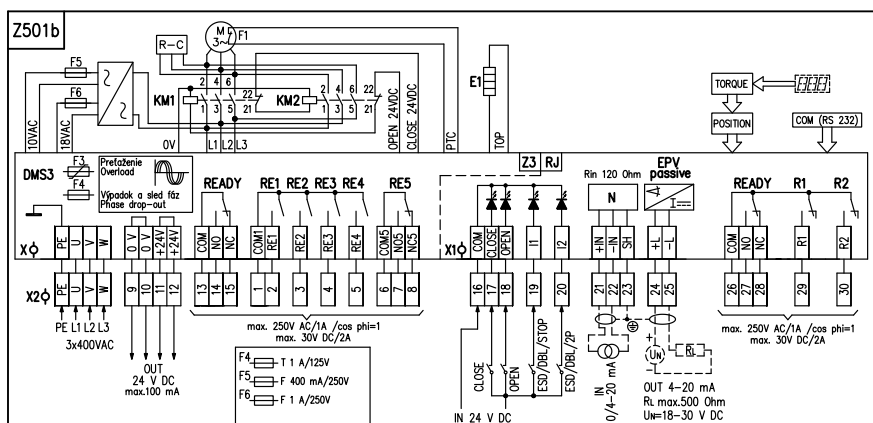
	ISO 5210	F16	B3	Ø40	P-1424	P-1424/B	B
		F25	B3	Ø50		P-1424/B	L
	DIN 3338	F16	C	24/Ø50/Ø80		P-1424/C	C
		G3 (F16)	D	Ø40		P-1424/D	D
	55510	Ø220/4xM20	5 35°/37°	Ø70/Ø85		P-1425; P-1425/1	G
	ISO 5210	F16	A	Ma . TR52		P-1424 P-1424/A	A

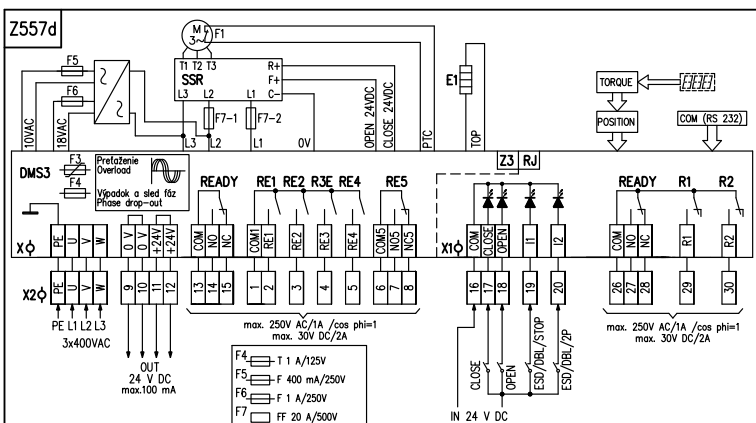
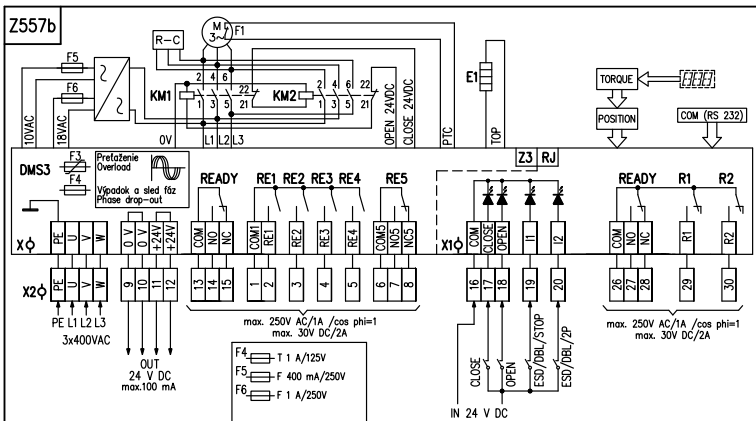
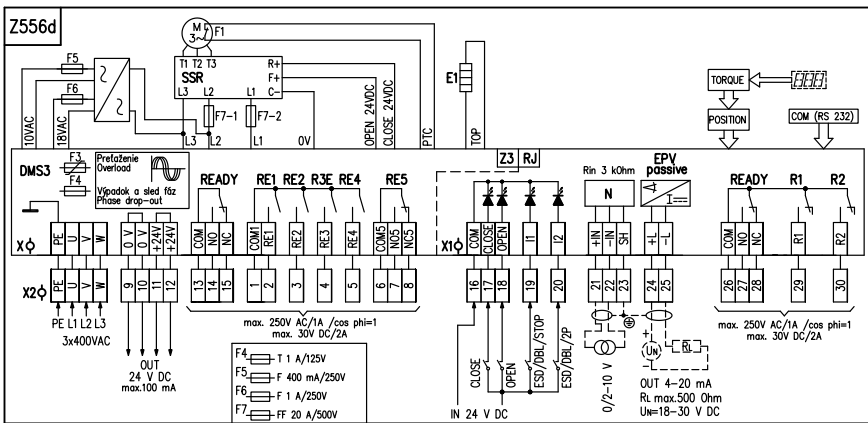
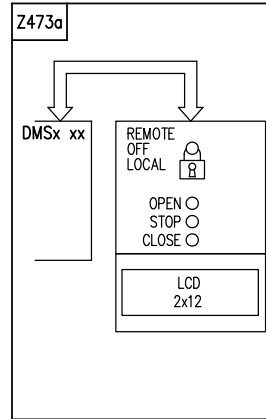
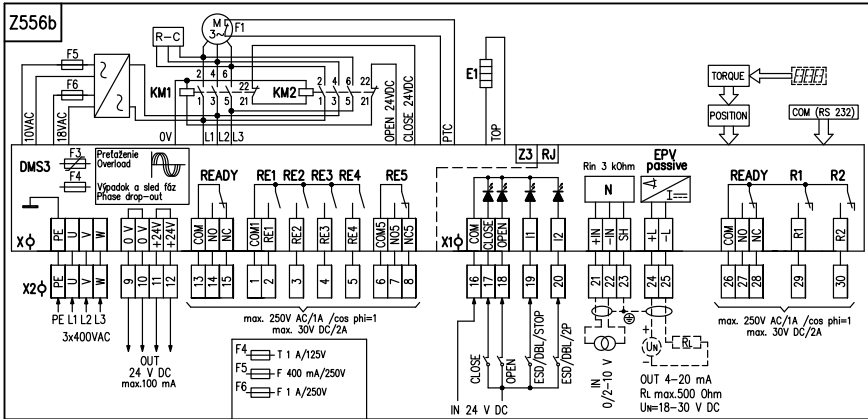
MOR 5PA

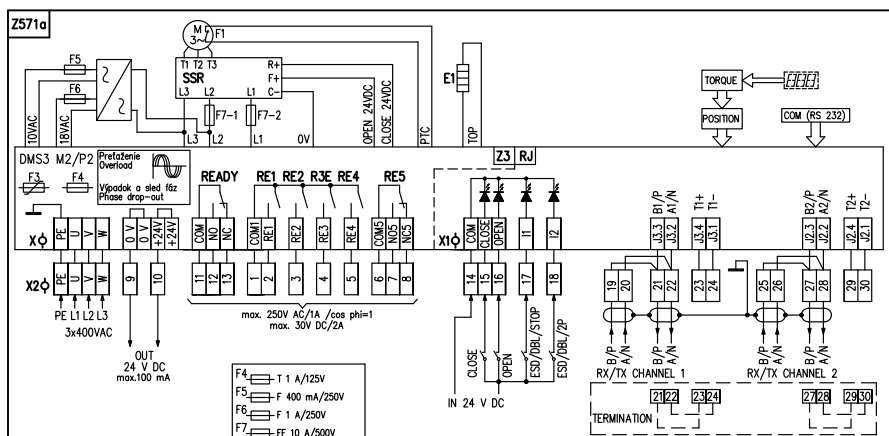
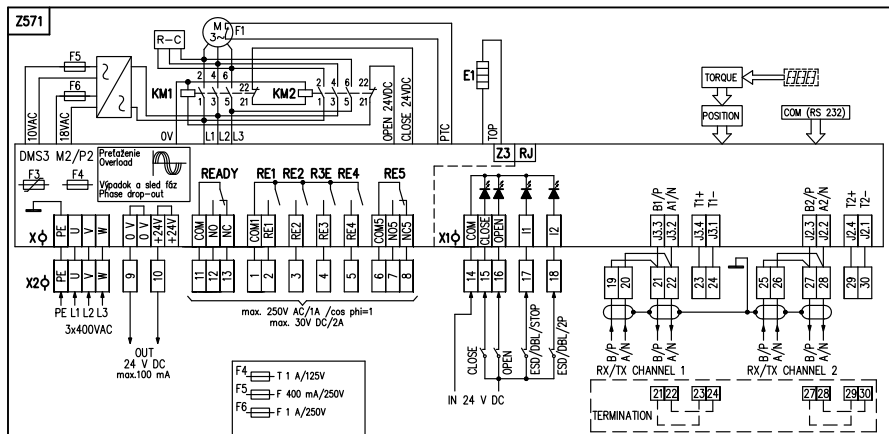
158.										X	-	X	X	X	X	X	X	/	X	X	
																			↓	↓	
																			0	0	
A																				0	1
B																				0	3
																			: A+B=20		
DB-9F/RJ45										224A80100											

- 10) « » .2 o « ».
- 31)
- 32) S2-10 S4-25%, 6-90 /
- 33) S4-25%, 90-1200 /
- 41) LCD -25°C

MOR 5PA







3 : M25x1,5 12,5 19 mm.

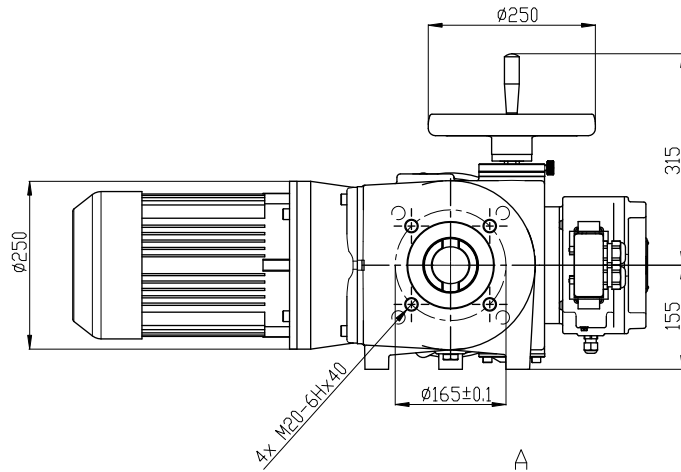
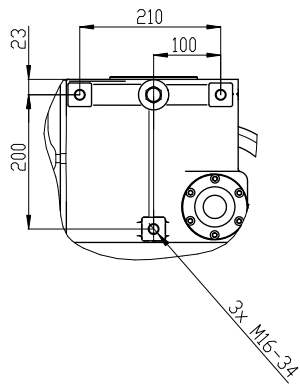
X -			
PE, U, V, W	(0,05 - 2,5 mm ²)		3x400/3x380 VAC, 50 Hz
0 V, +24 V	(0,05 - 1 mm ²)		24 V DC (100 mA)
COM, NO, NC	(0,05 - 1,5 mm ²)	READY	
COM1, RE1, RE2, RE3, RE4 ...	(0,05 - 1,5 mm ²)	RE1 RE4	
COM5, NO5, NC5	(0,05 - 1,5 mm ²)	RE5	
X1 -			
COM, CLOSE OPEN, I1, I2 ...	(0,05 - 1 mm ²)		24 V DC
+IN, -IN, SH	(0,05 - 1 mm ²)		0/4-20 mA (0/2 - 10 V)
+L, -L	(0,05 - 1 mm ²)		() 4-20 mA
COM, NO, NC	(0,05 - 1,5 mm ²)	READY	
R1, R2	(0,05 - 1,5 mm ²)	R1, R2	

READY R 1 R 2 READY R1 R2

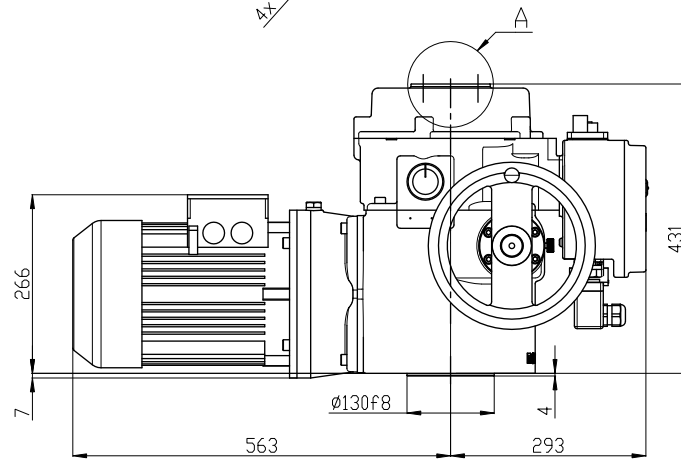
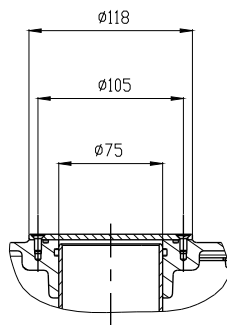
Z473.....					
Z501b.....				0/4 - 20 mA	c
Z501d.....	4 - 20 mA	a	,	0/4 - 20 mA	c
Z556b.....	4 - 20 mA	a	,	0/2 - 10 V	c
Z556d.....	4 - 20 mA	a	,	0/2 - 10 V	c
Z557b.....					
Z557d.....					
Z571.....				MODBUS / PROFIBUS	
Z571a.....				MODBUS / PROFIBUS	c

MOR 5PA

→ P



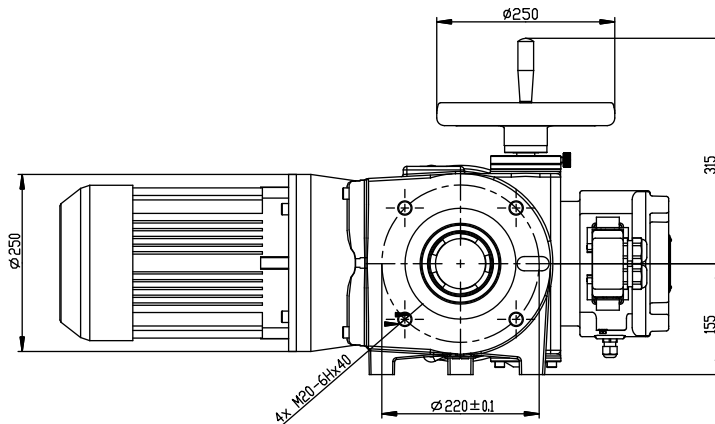
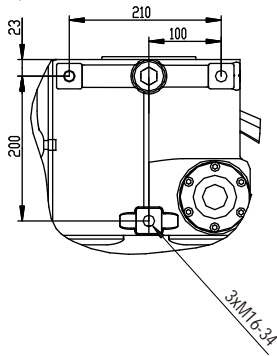
A



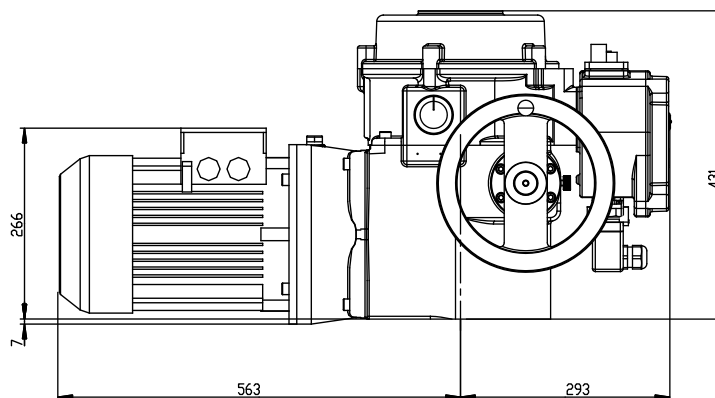
P-1424/B, C, D.

P-1424

→ P



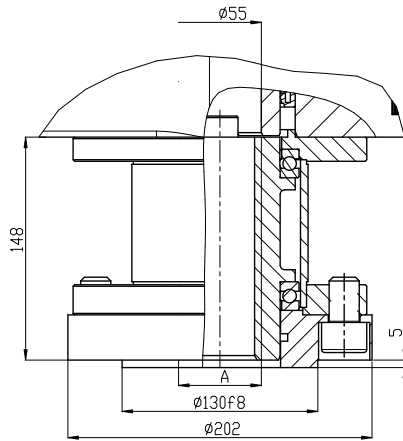
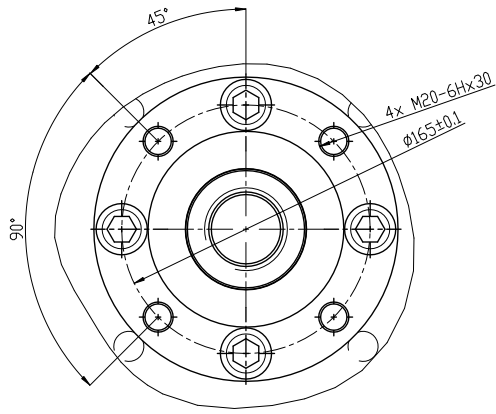
↑ P



P-1425/1.

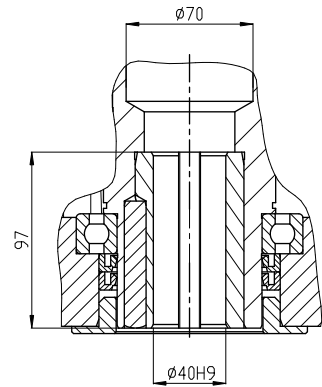
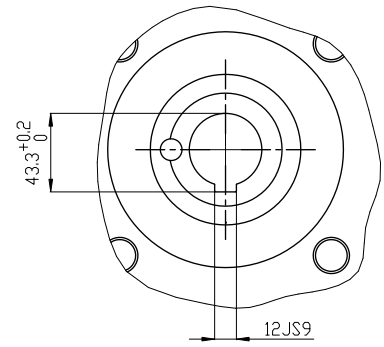
P-1425

A



P-1424/A

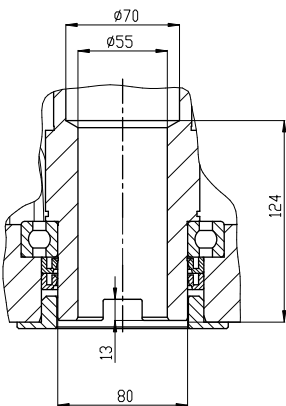
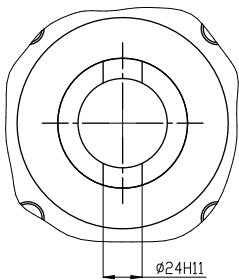
B3



P-1424/B

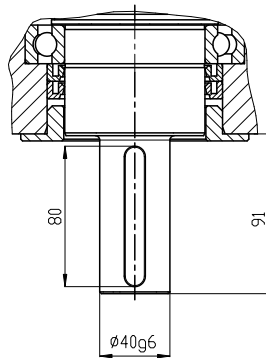
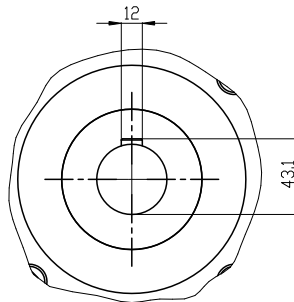
"A"

C



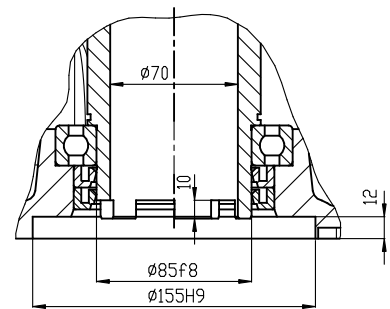
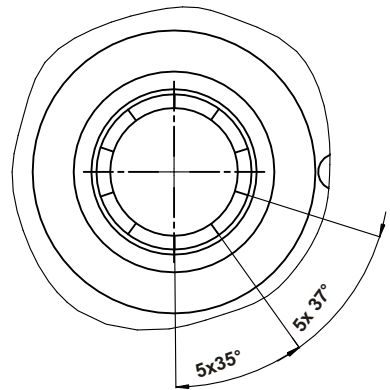
P-1424/C

D



P-1424/D

5x



P-1425/1