

REMATIC, DMS3,
24 V DC (2P)
(3P)
PROFIBUS DP V0/V1 MODBUS RTU.
LED (RS-232).
a a
« - ».



DMS3

- 220 V AC
- T
- a
- 60 % 100 %
- 2 R1, R2 (18)
- READY
- - 0/4 - 20 mA, 4 - 12 mA, 12 - 20 mA 0/2 - 10 V
- 24 V DC - , ,
- 24 V DC - , ,
- ESD ()
- - 4 - 20 mA a ()
- 24 V DC, 40
- (, , .)
- LED
- RS 232
- ISO 5210
- IP 67
- RE3, RE4, RE5
- RE1, RE2, RE3, RE4, RE5, READY
- PROFIBUS DP V0/V1,
- MODBUS RTU,

SOR 2PA

067. x - x x x x x / x x

10)			12)		o e		
15150	()	60721-2-1	(R)+WDr, MWDr, EWDr	C3	-25°C +55°C	IP 67	1
				C4	-25°C +55°C	IP 67	2
			(M)	C3	-40°C +40°C	IP 67	3
				C3	-25°C +55°C	IP 67	6
			(WW)	C4	-50°C +55°C	IP 67	7

		23)		
c	50 Hz	230 V AC	Z514, Z515, Z523, Z574, Z574c	0
		220 V AC		L
	50 Hz	3x400 V AC	Z532b, Z536b, Z537b Z574a, Z574d	2
		3x380 V AC		N
		3x400 V AC	Z532f, Z536f, Z537f	E
		3x380 V AC		F

31)			35)	50 Hz				↓
	32)	33)		50 Hz		60 Hz	DC	
				230 V 220 V	3x400 V 3x380 V	240 V 120 V	24 V	
20 Nm	17 Nm	10 Nm	40 min ⁻¹	●			A	
			20 min ⁻¹	●			5	
			12.5 min ⁻¹	●			6	
			10 min ⁻¹	●			7	
40 Nm	34 Nm	20 Nm	20 min ⁻¹	●			B	
			12.5 min ⁻¹	●			8	
			10 min ⁻¹	●			9	
60 Nm	50 Nm	30 Nm	12.5 min ⁻¹	●			C	
			10 min ⁻¹	●			Z	
		-	20 min ⁻¹	●			E	
80 Nm	68 Nm	40 Nm	10 min ⁻¹	●			D	
		-	12.5 min ⁻¹	●			K	
100 Nm	85 Nm	-	10 min ⁻¹	●			F	
12 Nm	10 Nm	6 Nm	40 min ⁻¹	●		●	A	
			20 min ⁻¹	●		●	5	
			12.5 min ⁻¹	●		●	6	
			10 min ⁻¹	●		●	7	
25 Nm	21 Nm	12 Nm	20 min ⁻¹	●		●	B	
			12.5 min ⁻¹	●		●	8	
			10 min ⁻¹	●		●	9	
40 Nm	34 Nm	20 Nm	12.5 min ⁻¹	●		●	C	
			10 min ⁻¹	●		●	Z	
			20 min ⁻¹	●		●	L	
45 Nm	38 Nm	-	20 min ⁻¹	●		●	H	
50 Nm	42 Nm	25 Nm	10 min ⁻¹	●		●	D	
60 Nm	50 Nm	30 Nm	12.5 min ⁻¹	●		●	M	
72 Nm	61 Nm	-	12.5 min ⁻¹	●		●	J	
80 Nm	68 Nm	40 Nm	10 min ⁻¹	●		●	N	
90 Nm	76 Nm	-	10 min ⁻¹	●		●	G	

49)			
	20	1 - 500	H

SOR 2PA

067. x - x x x x x x / x x

	2P	24 V DC				Z515, Z537b, Z537f	F
DMS3	3P/2P		0/4 - 20 mA	24 V DC	4 - 20 mA	Z514, Z532b, Z532f	G
			0/2 - 10 V			Z523, Z536b, Z536f	H
DMS3 M1	1/2P	MODBUS RTU		24 V DC		Z574c, Z574d	M
DMS3 M2						Z574, Z574a	N
DMS3 P1		PROFIBUS DP V0 / V1				Z574c, Z574d	P
DMS3 P2						Z574, Z574a	R

ISO 5210 ()	F07	B3	ø16	P-1377	A	
		B4	ø25		B	
	F10	B3	ø20	P-1378/A	C	
	F10	B1	ø42	P-2030a	Y	
	F07/F10 ⁶⁵⁾ (G0)	A		ø10 ⁶⁶⁾	ISO 5210, F10-A P-1380/A ISO 5210, F07-A P-1380/B non standard G0 P-1380/C	D
				Tr20x4 LH		E
				Tr24x4 LH		F
				Tr24x5 LH		G
				Tr25x5 LH		H
			Tr26x5 LH	J		
	G0	E	ø20	P-1378/B	K	
	G0	C	14/ø28/ø42		L	
DIN 3338	F10	C	14/ø28/ø42	P-1378/A	M	
	F07	-	ø20	P-1379	N	
		-	ø30		P	
	F10	-	ø20		Q	
		-	ø30		R	
55510	64x30/4xM6		11x11	P-1420	S	
			35°/37°; ø32/ø25	P-1453 ⁶⁷⁾	T	
	ø104/4xø15		19x19	P-1454	U	
			35°/37° ø46/ø32	P-1452/A ⁶⁸⁾	V	
			P-1452/B ⁶⁹⁾	W		

A		20		-	0	1
B				-	0	3
D	RE3, RE4, RE5 (DMS3 RE3)			Z500a	0	5
E	RE1, RE2, RE3, RE4, RE5, READY (DMS3 RE6)			Z500	0	6
F	LCD (P-2032 . -25°C)			Z473a	0	7
: A+B=20, A+D=22, A+E=23, A+F=24, B+D=29, B+E=30, B+F=31, D+F=40, E+F=44, A+B+D=52, A+B+E=53, A+B+F=54, A+D+F=63, A+E+F=67, B+D+F=80, B+E+F=84, A+B+E+F=113, A+B+D+F=114						

DB-9F/RJ45	224A80100
------------	-----------

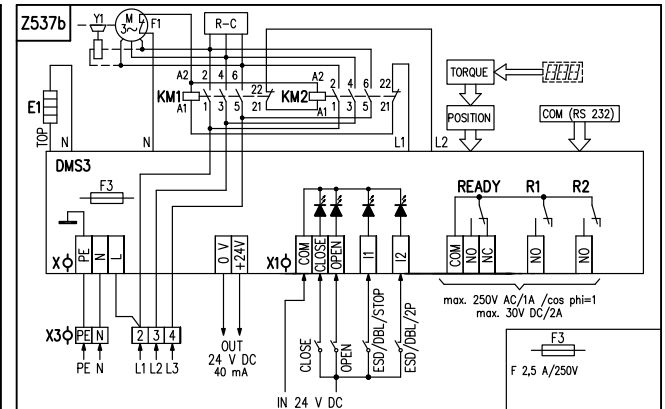
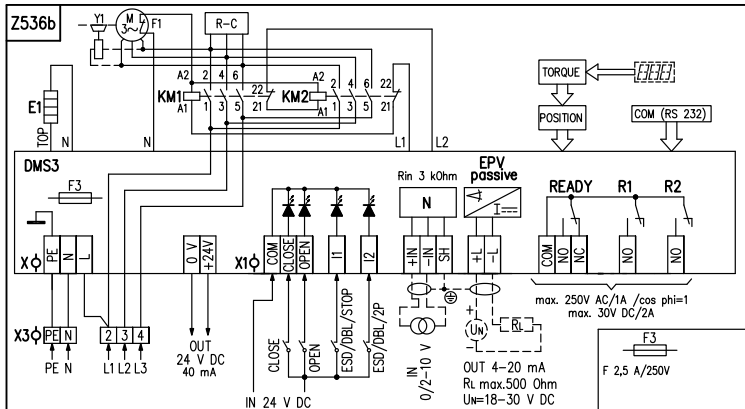
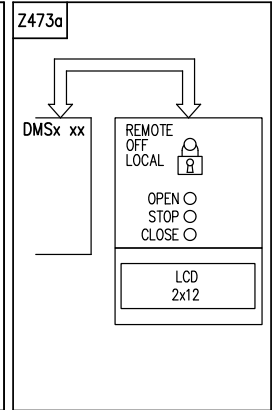
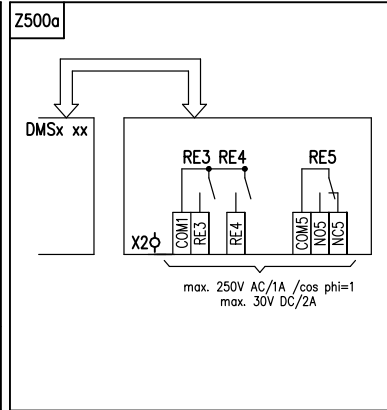
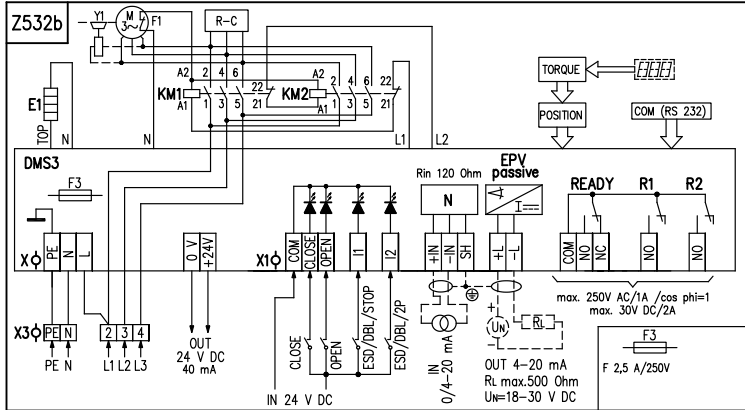
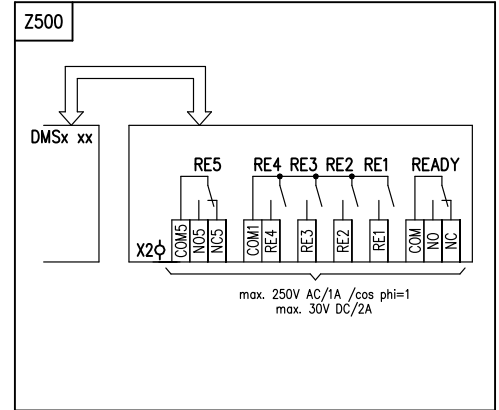
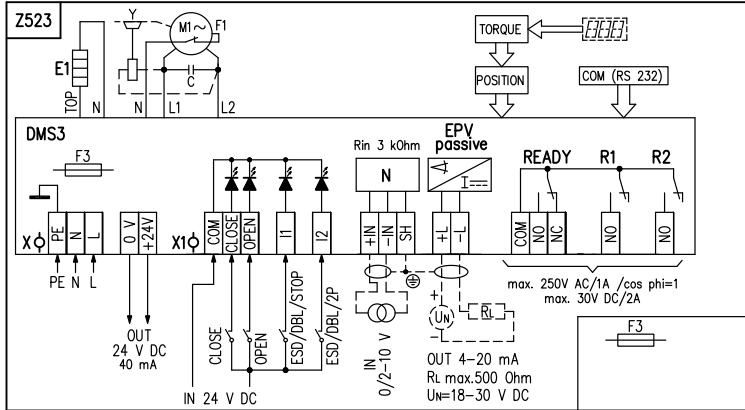
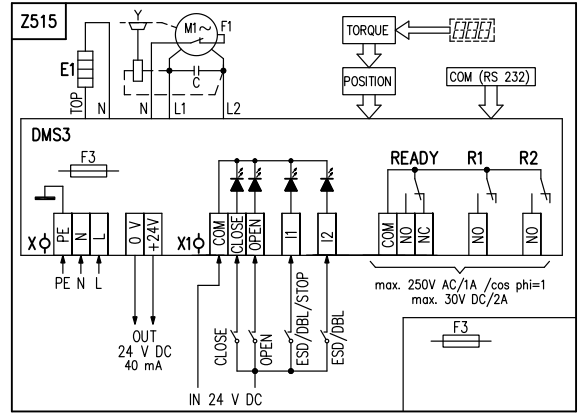
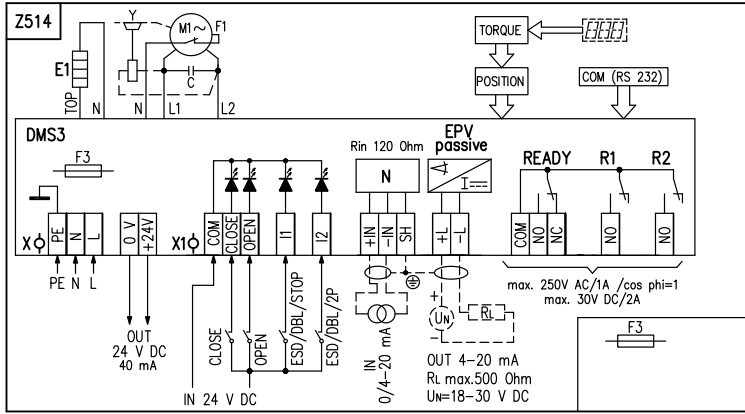
10) « » .2.
 23) « » .2.
 31) 60 100%.
 32) S2-10 min a S4-25% 90 / .
 33) S4-25% , 90 - 1200 / .

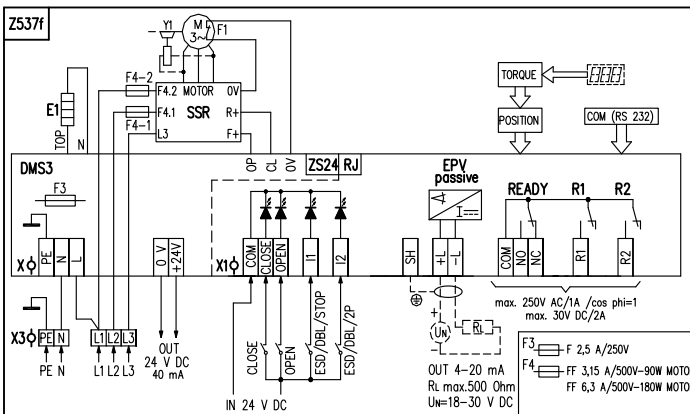
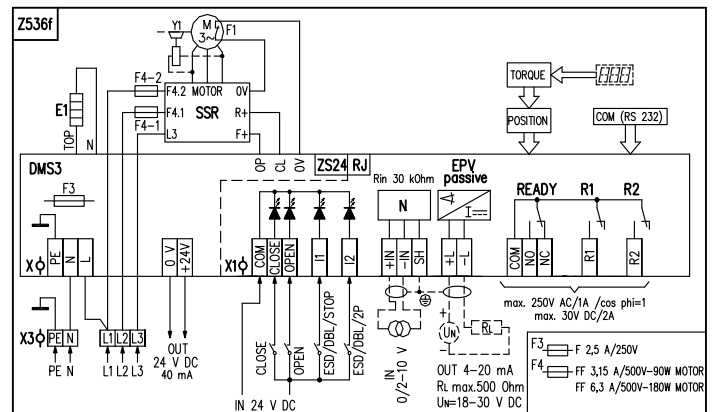
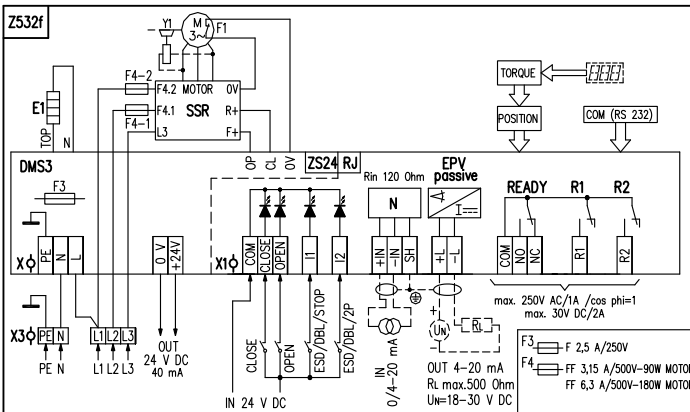
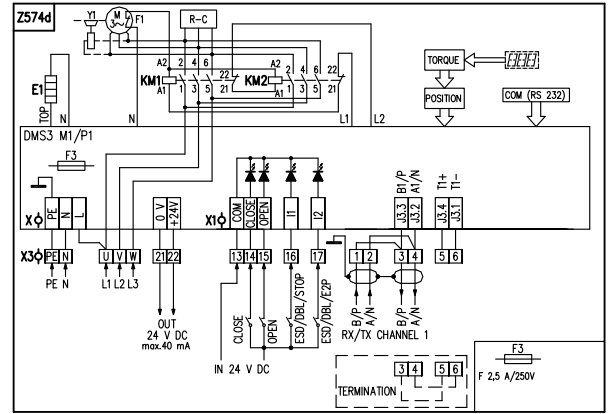
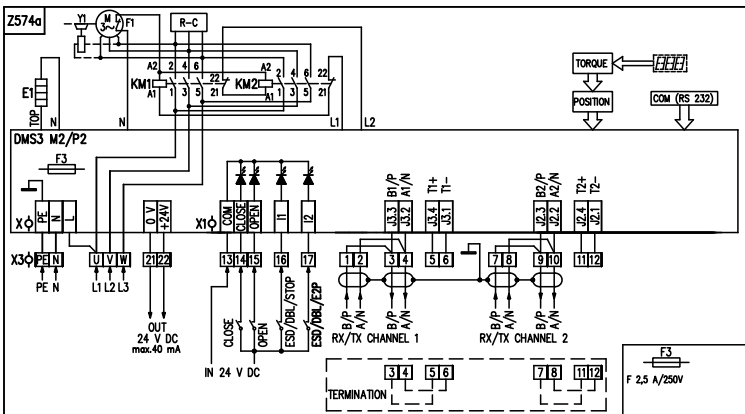
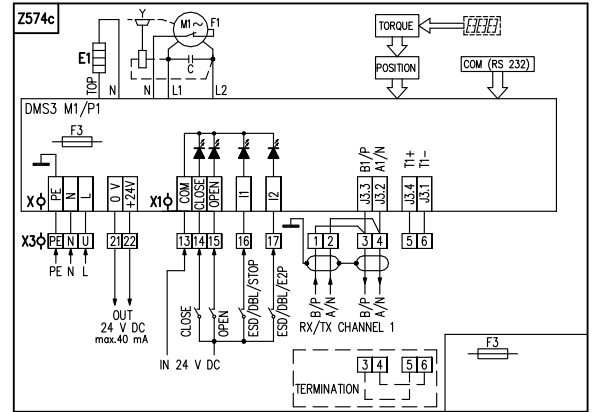
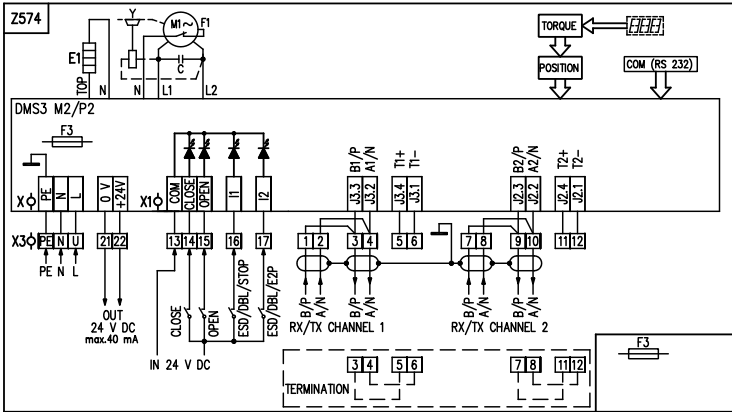
SOR 2PA

- 49) S2-10
 - 65) Ø60
 - 66)
 - 67) 50
 - 68) 100
 - 69) 150
 - 71) 230/220 VAC 3x400/3x380 VAC.
- PROFIBUS MODBUS RTU.

Ø26.

SOR 2PA





1. N, L

()

230V AC, 24 V AC

- 3 - 2 16 - 6-10,5 1 20 - 8-14,5

- 2 - 1 16 - 6-10,5 1 16 - 9-13

X -
 PE, N, L (0,05 - 1,5 mm²) 220/230 V AC, 50/60 Hz
 0 V, +24 V (1,5 mm²) 24 V DC (40 mA)
X1 -
 COM, CLOSE OPEN, I1, I2... (0,05 - 1 mm²) 24 V DC
 +IN, -IN, SH (0,05 - 1 mm²) 0/4-20 mA (0/2-10V)
 +L, -L, SH (0,05 - 1 mm²) () 4-20 mA
 COM, NO, NC (0,05 - 1,5 mm²) READY
 COM, NO (0,05 - 1,5 mm²) R1, R2
X2 -
 COM1,RE1,RE2,RE3,RE4 (0,05 - 1,5 mm²) RE1, RE2, RE3, RE4
 COM5, NO5, NC5 (0,05 - 1,5 mm²) RE5
 COM, NO, NC (0,05 - 1,5 mm²) READY

C
 COM(RS232) PC
 EPV passive (EPV)
 E1
 F1
 F2
 F3
 M1~ / M3~
 N
 R
 POSITION
 Rin
 R
 UN EPV
 R1, R2
 READY ()
 RE1 o RE5
 TORQUE
 DMS3

Z473a ...
 Z500 6-
 Z500a ... 3-
 Z514 a 0/4 - 20 mA c
 4 - 20 mA a
 Z515 a
 Z523 a 0/2 - 10 V c
 4-20 mA a
 Z532b ... a 0/4 - 20 mA c
 4-20 mA a , c
 Z532f a 0/4 - 20 mA c
 4-20 mA a , c
 Z536b ... a 0/2 - 10 V c
 4-20 mA a , c
 Z536f a 0/2 - 10 V c
 4-20 mA a , c
 Z537b ... a
 Z537f a
 Z574 e MODBUS / PROFIBUS -
 Z574a e MODBUS / PROFIBUS -
 Z574c ... e MODBUS / PROFIBUS -
 Z574d ... e MODBUS / PROFIBUS -

R1, R2, RE1, RE2, RE3, RE4, RE5:

READY: o ; o ; o ; o

(EPV): 4 - 20 mA, 20 - 4 mA.

() : 2P, 3P, 3P/2P I2.

(N): : 4 - 20 mA, 20 - 4 mA, 0 - 20 mA, 20 - 0 mA, 4 - 12 mA, 12 - 4 mA, 12 - 20 mA, 20 - 12 mA;

: 2 - 10 V, 10 - 2 V, 0 - 10 V, 10 - 0 V

I1: ; ESD (Emergency shut down - I1

"); DBL (- ; !

I2: ; ESD (Emergency shut down - I2

"); DBL (; 2P (

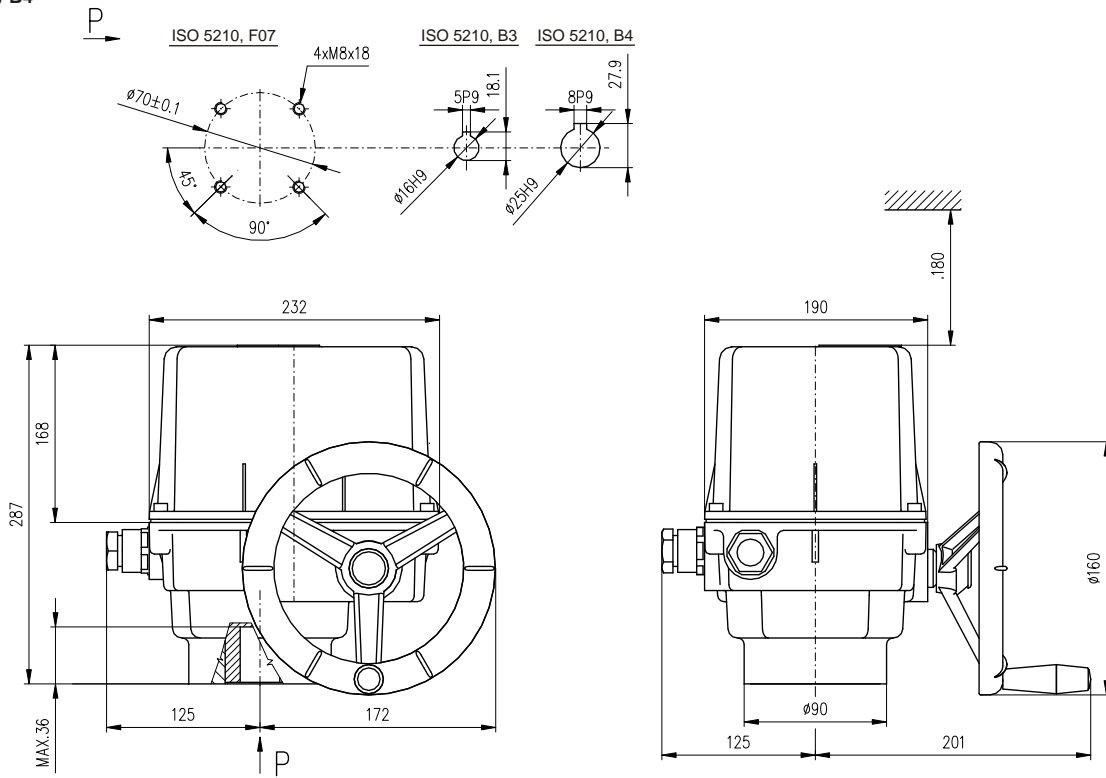
3P/2P I2 I2 24 VDC).

O : ; ; ;

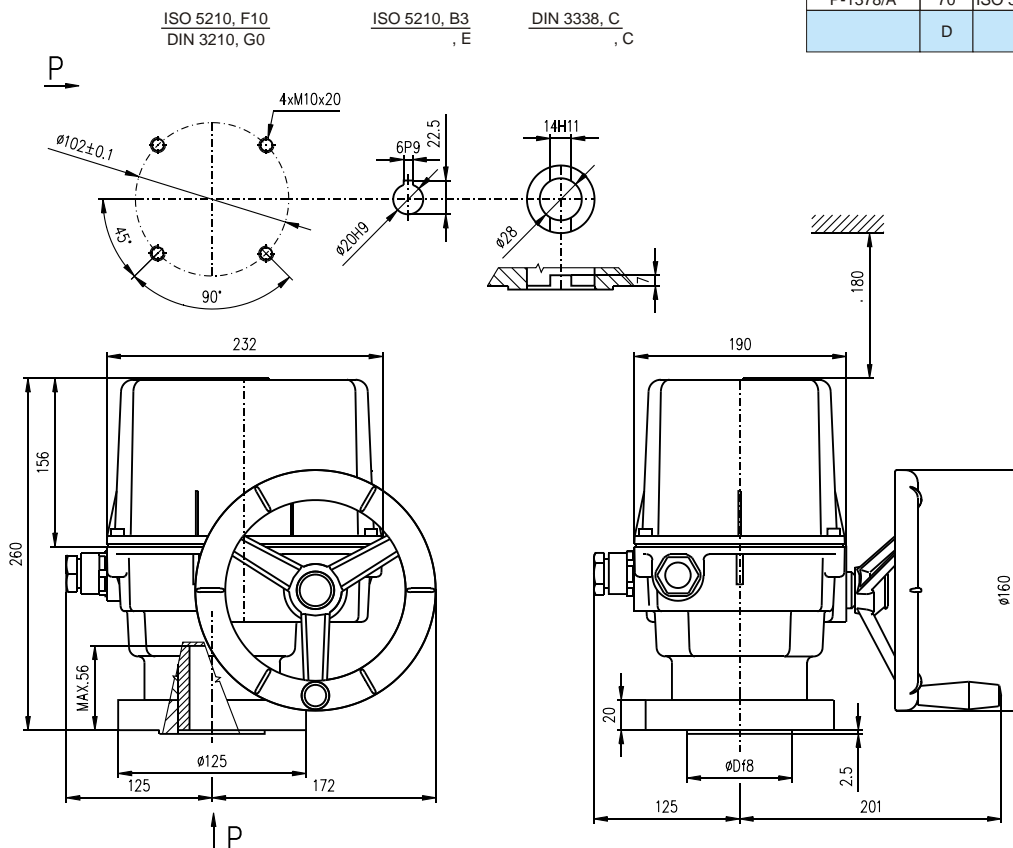
I1, I2 ESD I2). (: ESD I1,

SOR 2PA

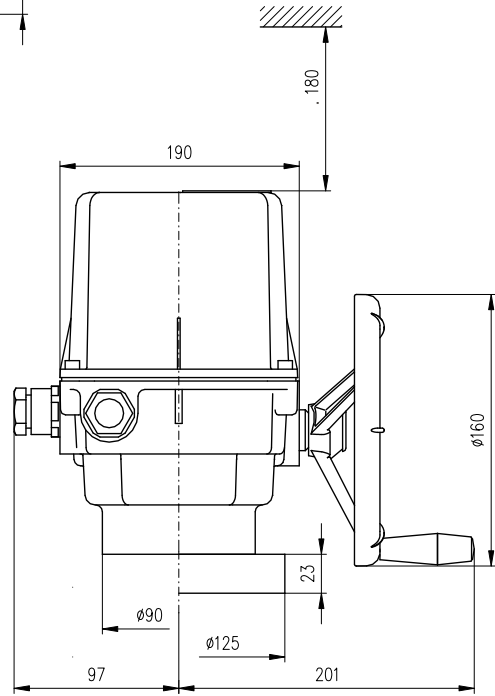
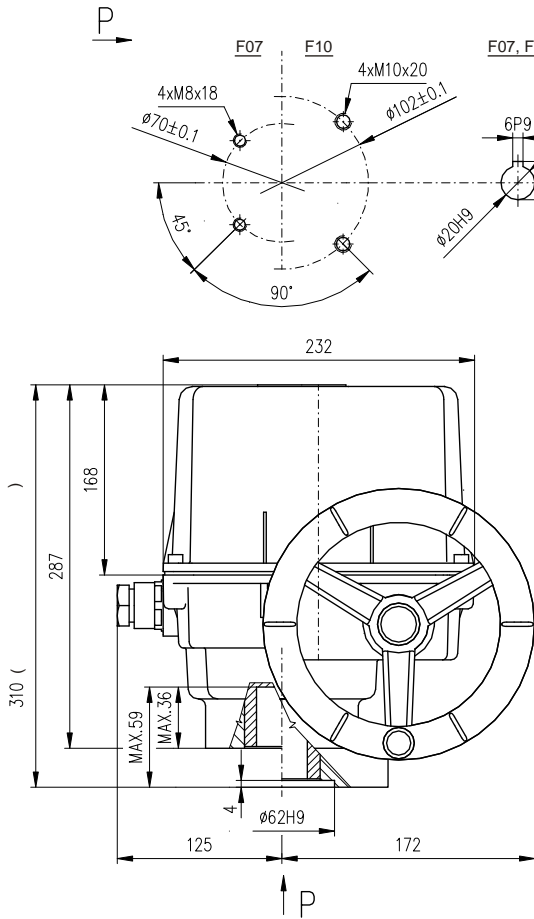
B3 / B4



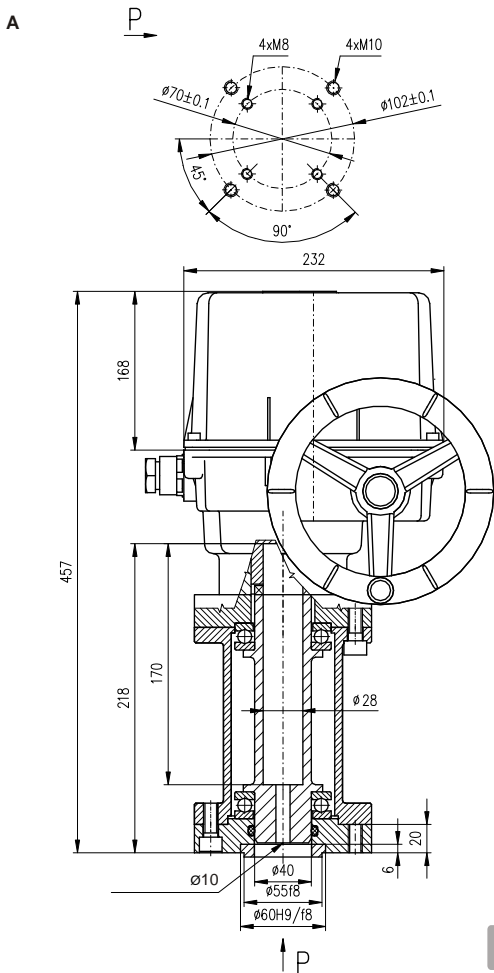
B3 / C / E



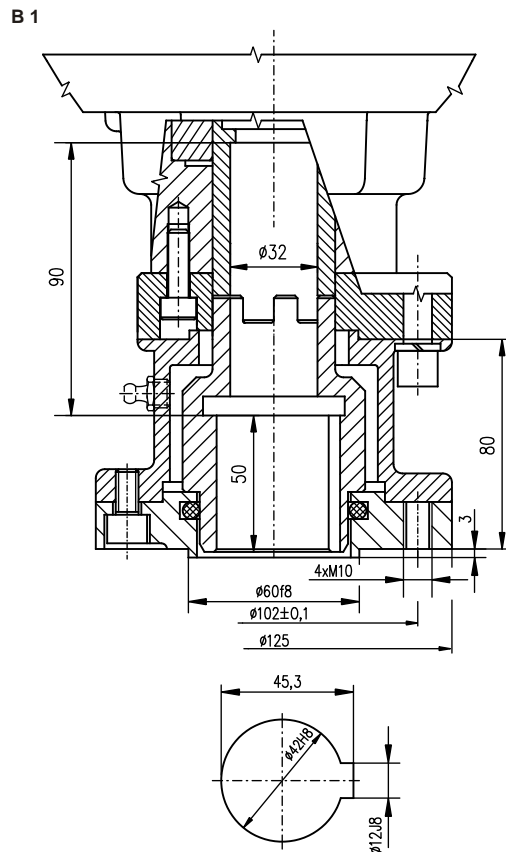
P-1378



P-1379

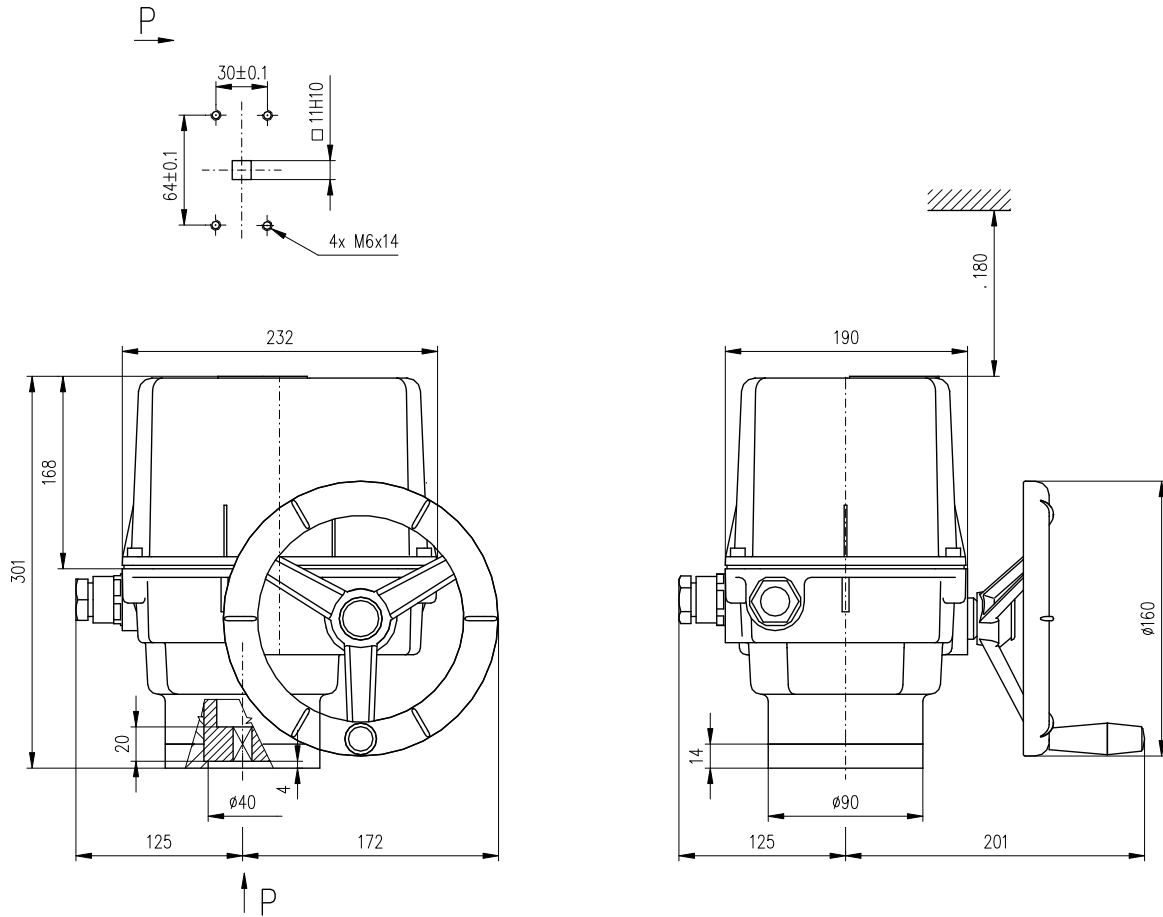


P-1380

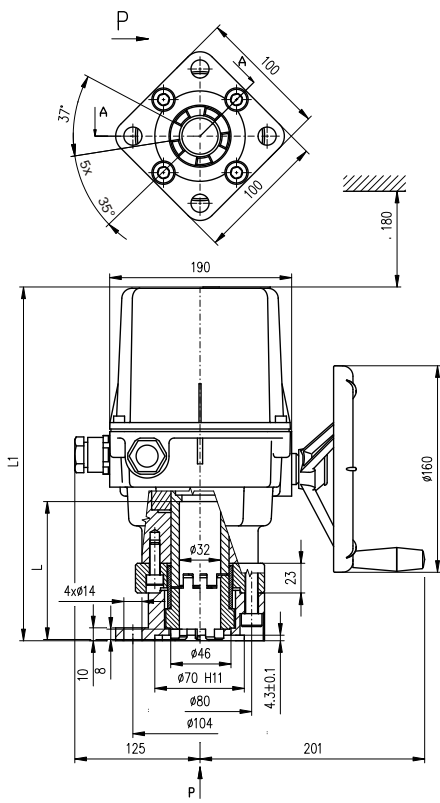


P-1379

P-2030a

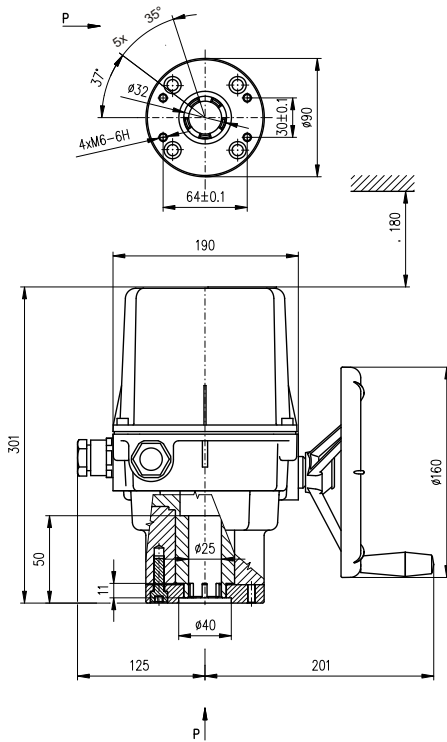


P-1420

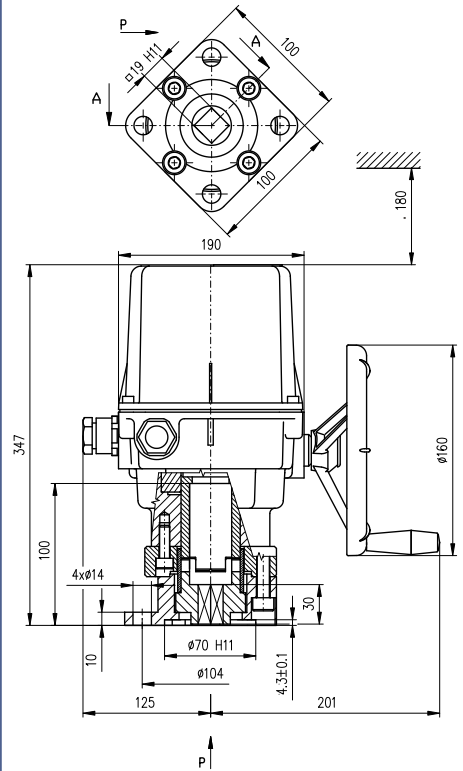


P-1452/B	397	.150
P-1452/A	347	.100
	L1	L

P-1452

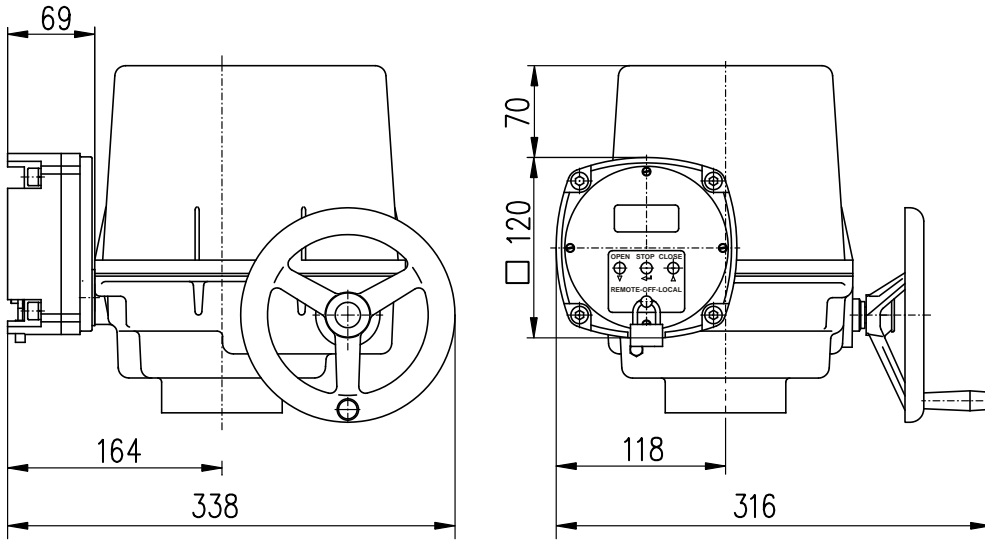


P-1453



P-1454

DMS3



P - 2032a