

REMATIC, DMS3,  
24 V DC (2P )  
(3P )  
PROFIBUS DP V0/V1 MODBUS RTU.  
: LED ( RS-232).  
a a  
« - ».



### DMS3

- 220 V AC
- T
- a
- 60 % 100 %
- 2 R1, R2 (18 )
- READY
- - 0/4 - 20 mA, 4 - 12 mA, 12 - 20 mA 0/2 - 10 V
- 24 V DC - , ,
- 24 V DC - , ,
- ESD ( )
- - 4 - 20 mA a ( )
- 24 V DC, 40
- LED
- ( , , .)
- RS 232
- ISO 5211
- IP 67
- RE3, RE4, RE5
- RE1, RE2, RE3, RE4, RE5, READY
- PROFIBUS DP V0/V1,
- MODBUS RTU,

SPR 1PA

231. x - x x x x x / x x

10)			12)				
			o	e			↓
15150	( )	60721-2-1	(R)+WDr, MWDr, EWDr	C3	-25°C +55°C	IP 67	1
				C4	-25°C +55°C	IP 67	2
				C3	-25°C +55°C	IP 68 <sup>11)</sup>	5
	( )	(M)	C3	-50°C +40°C	IP 67	3	
	( )		C3	-25°C +55°C	IP 67	6	
( )	(WW)	C4	-50°C +40°C	IP 67	7		

		23)				↓
	50 Hz	230 V AC	Z514, Z523, Z515 Z574, Z574c	0		
		220 V AC		L		
		24 V AC		3		
	60 Hz	240 V AC	Z514, Z523, Z515 Z574, Z574c	V		
		120 V AC		T		
		24 V AC		J		
50 Hz	3x400 V AC	Z532, Z536, Z537 Z574e, Z574b	2			
	3x380 V AC		N			

		32)		33)				↓
		« - »		50 Hz	60 Hz			
46 Nm	40 Nm	-	-	10 s/90°	8 s/90°	0		
90 Nm	80 Nm	63 Nm	63 Nm	20 s/90°	17 s/90°	1		
90 Nm	80 Nm	63 Nm	63 Nm	40 s/90°	34 s/90°	2		
72 Nm	63 Nm	50 Nm	50 Nm	80 s/90° <sup>34)</sup>	67 s/90°	3		

						↓
		42)	60°			A
			90°			B
			120°			C
			160°			D
			50° - 120°			M
			90° - 160°			N
			160° - 360°			P

								↓	
DMS3	2P	24 V DC		-		Z515, Z537		F	
	3P/2P	0/4 - 20 mA	24 V DC		4 - 20 mA		Z514, Z532		G
		0/2 - 10 V					Z523, Z536		H
DMS3 M1	/ 2P	MODBUS RTU					Z574c, Z574e		M
DMS3 M2			24 V DC				Z574, Z574b		N
DMS3 P1		PROFIBUS DP V0 / V1					Z574c, Z574e		P
DMS3 P2							Z574, Z574b		R

SPR 1PA

231. x - x x x x x / x x

		ISO		
ISO 5211	F05/F07	D-14	14x14	P-1147 P-2032 <sup>66)</sup>
		L-14		
		H-14	14x22	
		V-20	Ø20 <sup>62)</sup>	
		D-17	17x17	
		L-17		
		H-11	11x18	
		D-11	11x11	
		L-11		
		H-8	8x13	
		V-17	Ø17 <sup>62)</sup>	
		D-16	16x16	
		L-16		
		H-10	10x16	
		V-18	Ø18 <sup>62)</sup>	
		V-30	Ø30 <sup>63)</sup>	
		-	Ø 8 <sup>64)</sup>	
H-17	17x25			
		E01	Ø22	P-1162 P-0210, P-2032 <sup>66)</sup>
+		-	-	
+ + TV 360		-	-	

	90°.	-		
A		-	0	1
B		-	0	3
D	RE3, RE4, RE5 ( DMS3 RE3) <sup>71)</sup>	Z500a	0	5
E	RE1, RE2, RE3, RE4, RE5, READY ( DMS3 RE6) <sup>71)</sup>	Z500	0	6
F	LCD ( P-2032. <sup>66)</sup> -25°C)	Z473a	0	7

: A+B=20, A+D=22, A+E=23, A+F=24, B+D=29, B+E=30, B+F=31, D+F=40, E+F=44, A+B+D=52, A+B+E=53, A+B+F=54, A+D+F=63, A+E+F=67, B+D+F=80, B+E+F=84, A+B+E+F=113, A+B+D+F=114

DB-9F/RJ45	224A80100
------------	-----------

10) « » .2.  
 23) S2-10 min a S4-25% 90 / .  
 32) S4-25% , 90 - 1200 / .  
 33) 3x380/3x400 VAC.  
 34) ( ) .  
 42) .  
 62) ( ) .  
 63) .  
 64) Ø8.  
 65) .  
 66) c DMS3 P-2032.  
 71) 230/220 VAC 3x400/3x380 VAC.  
 PROFIBUS MODBUS RTU.

SPR 2PA

232.	x	-	x	x	x	x	x	/	x	x
------	---	---	---	---	---	---	---	---	---	---

10)			12)			o e		
15150	( )	60721-2-1	(R)+WDr, MWDr, EWDr	C3	-25°C +55°C	IP 67	1	
				C4	-25°C +55°C	IP 67	2	
				C3	-25°C +55°C	IP 68 <sup>11)</sup>	5	
	( )	(M)	C3	-50°C +40°C	IP 67	3		
	( )		C3	-25°C +55°C	IP 67	6		
	( )	(WW)	C4	-50°C +40°C	IP 67	7		

		23)			
	50 Hz	230 V AC	Z514, Z515, Z523, Z574, Z574c	0	
		220 V AC		L	
	60 Hz	120 V AC	Z532b, Z536b, Z537b Z574a, Z574d	T	
		-		2	
	c	50 Hz	3x400 V AC	Z532f, Z536f, Z537f	N
			3x380 V AC		E
3x400 V AC			F		

		32)		33)		
		« - »		50 Hz	60 Hz	
72 Nm	63 Nm	-	-	5 s/90°	4 s/90°	0
145 Nm	125 Nm	100 Nm		10 s/90°	8 s/90°	1
				20 s/90°	17 s/90°	2
				40 s/90°	34 s/90°	3
				80 s/90° <sup>34)</sup>	67 s/90°	4

	42)	60°	A
		90°	B
		120°	C
		160°	D
		50° - 120°	M
		90° - 160°	N
		160° - 360°	P

		24 V DC					
DMS3	2P			-	Z515, Z537b, Z537f	F	
	3P/2P	0/4 - 20 mA	24 V DC	4 - 20 mA	Z514, Z532b, Z532f	G	
		0/2 - 10 V			Z523, Z536b, Z536f	H	
DMS3 M1	/ 2P	MODBUS RTU			Z574c, Z574d	M	
DMS3 M2				24 V DC	Z574, Z574a	N	
DMS3 P1		PROFIBUS DP V0 / V1				Z574c, Z574d	P
DMS3 P2						Z574, Z574a	R

SPR 2PA

232. x - x x x x x / x x

		ISO		
ISO 5211	F05/F07	D-17	17x17	P-1147 P-2032 <sup>66)</sup>
		L-17		
		H-17	17x25	
		V-28	Ø28 <sup>62)</sup>	
		H-11	11x18	
		D-16	16x16	
		L-16		
		D-14	14x14	
		L-14		
		H-14	14x22	
		V-22	Ø22 <sup>62)</sup>	
		V-30	Ø30 <sup>63)</sup>	
		-	Ø8 <sup>64)</sup>	
		H-13	13x19	
	-	E05	Ø25	P-1162 P-0210, P-2032 <sup>66)</sup>
	-	-	-	
+ +	TV 360	-	-	

		90°.	-		
A			-	0	1
B			-	0	3
D	RE3, RE4, RE5 ( DMS3 RE3) <sup>71)</sup>		Z500a	0	5
E	RE1, RE2, RE3, RE4, RE5, READY ( DMS3 RE6) <sup>71)</sup>		Z500	0	6
F	LCD ( P-2032. <sup>66)</sup> -25°C)		Z473a	0	7
: A+B=20, A+D=22, A+E=23, A+F=24, B+D=29, B+E=30, B+F=31, D+F=40, E+F=44, A+B+D=52, A+B+E=53, A+B+F=54, A+D+F=63, A+E+F=67, B+D+F=80, B+E+F=84, A+B+E+F=113, A+B+D+F=114					

DB-9F/RJ45	224A80100
------------	-----------

10) « » .2.  
 23) « » .  
 32) S2-10 min a S4-25% 90 / / .  
 33) S4-25% , 90 - 1200 / / .  
 34) 3x380/3x400 V AC.  
 42) « » .  
 62) ( ) .  
 63) « » .  
 64) Ø8.  
 65) « » .  
 66) « » .  
 71) PROFIBUS MODBUS RTU. c DMS3 P-2032. 230/220 V AC 3x400/3x380 V AC.

SPR 2.3PA

233.	x	-	x	x	x	x	x	/	x	x
------	---	---	---	---	---	---	---	---	---	---

10)			12)		o e		
15150	( )	60721-2-1	(R)+WDr, MWDr, EWDr	C3	-25°C +55°C	IP 67	1
				C4	-25°C +55°C	IP 67	2
				C3	-25°C +55°C	IP 68 <sup>11)</sup>	5
	( )	(M)	C3	-50°C +40°C	IP 67	3	
	( )		C3	-25°C +55°C	IP 67	6	
	( )	(WW)	C4	-50°C +40°C	IP 67	7	

		23)		
	50 Hz	230 V AC	Z514, Z515, Z523, Z574, Z574c	0
		220 V AC		L
		120 V AC		T
	60 Hz	3x400 V AC	Z532b, Z536b, Z537b Z574a, Z574d	2
		3x380 V AC		N
		3x400 V AC		E
c	3x380 V AC	Z532f, Z536f, Z537f	F	

		32)		33)		
« - »		50 Hz	60 Hz			
290 Nm	250 Nm	200 Nm	20 s/90°	16 s/90°	0	
			40 s/90°	34 s/90°	1	
			80 s/90°	67 s/90°	2	
			160 s/90° <sup>34)</sup>	135 s/90°	3	

	42)	60°	A
		90°	B
		120°	C
		160°	D
		50° - 120°	M
		90° - 160°	N
		160° - 360°	P

DMS3	2P	24 V DC		-	Z515, Z537b, Z537f	F
	3P/2P	0/4 - 20 mA	24 V DC	4 - 20 mA	Z514, Z532b, Z532f	G
		0/2 - 10 V			Z523, Z536b, Z536f	H
DMS3 M1	/ 2P	MODBUS RTU	24 V DC	-	Z574c, Z574d	M
DMS3 M2					Z574, Z574a	N
DMS3 P1					Z574c, Z574d	P
DMS3 P2					Z574, Z574a	R
		PROFIBUS DP V0 / V1				



SPR 2.4PA

234. x - x x x x x / x x

10)			12)		o e		
15150	( )	60721-2-1	(R)+WDr, MWDr, EWDr	C3	-25°C +55°C	IP 67	1
				C4	-25°C +55°C	IP 67	2
				C3	-25°C +55°C	IP 68 <sup>11)</sup>	5
	( )	(M)	C3	-50°C +40°C	IP 67	3	
	( )		C3	-25°C +55°C	IP 67	6	
	( )	(WW)	C4	-50°C +40°C	IP 67	7	

		23)		
	50 Hz	230 V AC	Z514, Z515, Z523, Z574, Z574c	0
		220 V AC		L
		120 V AC		T
	60 Hz	3x400 V AC	Z532b, Z536b, Z537b Z574a, Z574d	2
		3x380 V AC		N
		3x400 V AC		E
c	3x380 V AC	Z532f, Z536f, Z537f	F	

		32)		33)		
		« - »		50 Hz	60 Hz	
575 Nm	500 Nm	400 Nm		40 s/90°	34 s/90°	0
				80 s/90°	68 s/90°	1
				160 s/90° <sup>34)</sup>	135 s/90°	2

	-	60°	A
		90°	B
		120°	C
		160°	D
	42)	50° - 120°	M
		90° - 160°	N
	160° - 360°	P	

DMS3	2P	24 V DC		-	Z515, Z537b, Z537f	F
	3P/2P	0/4 - 20 mA	24 V DC	4 - 20 mA	Z514, Z532b, Z532f	G
0/2 - 10 V		Z523, Z536b, Z536f			H	
DMS3 M1	/ 2P	MODBUS RTU	24 V DC	-	Z574c, Z574d	M
DMS3 M2					Z574, Z574a	N
DMS3 P1		PROFIBUS DP V0 / V1			Z574c, Z574d	P
DMS3 P2					Z574, Z574a	R



SPR 2.4PA

234. x - x x x x x / x x

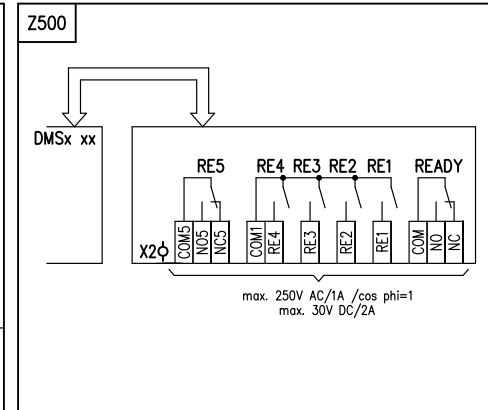
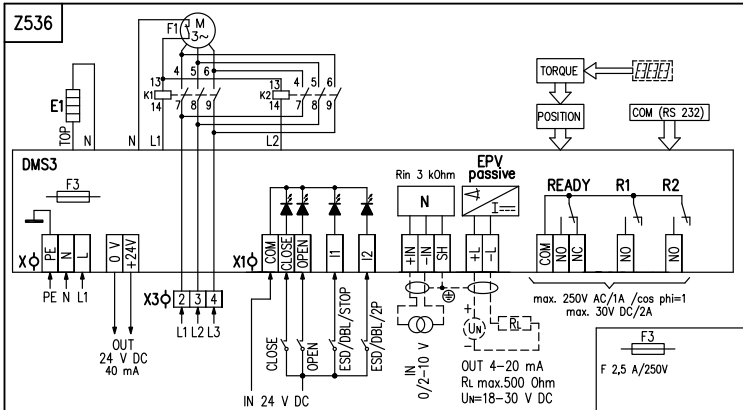
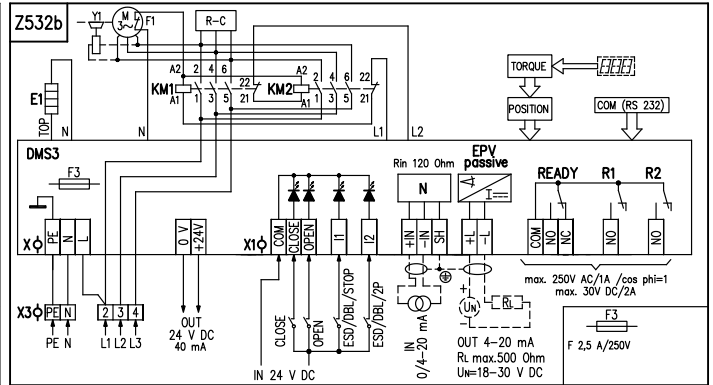
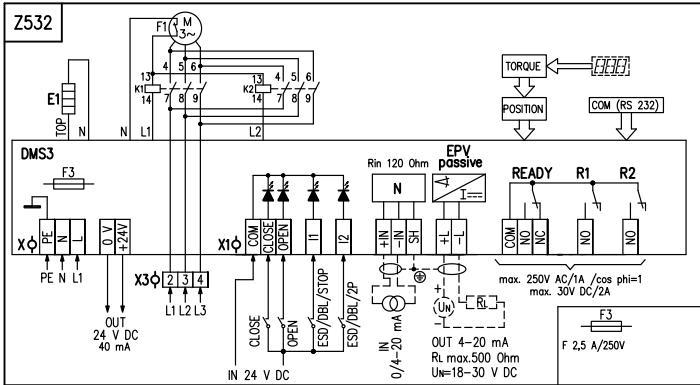
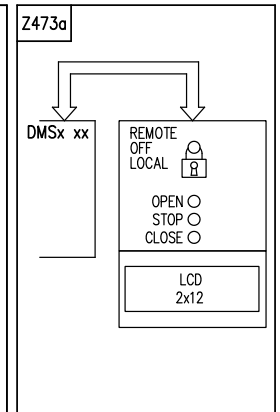
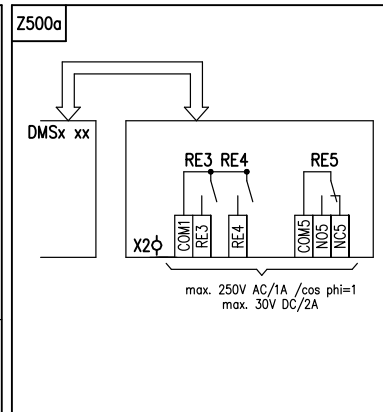
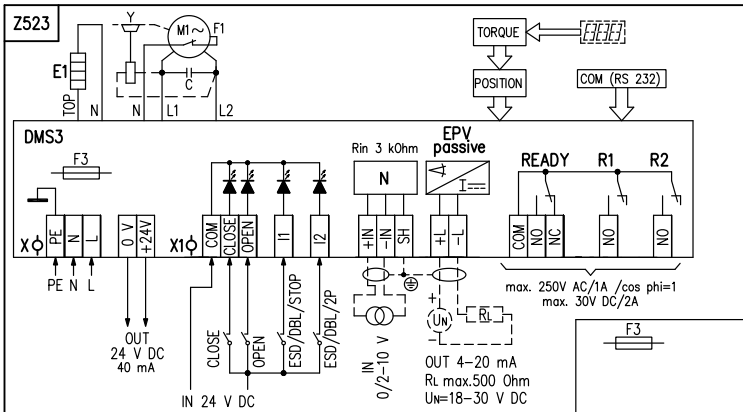
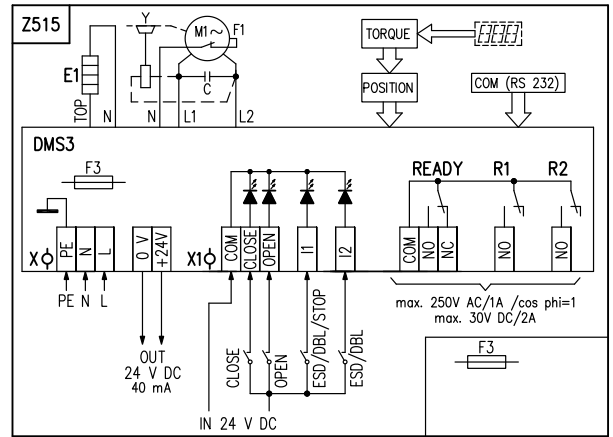
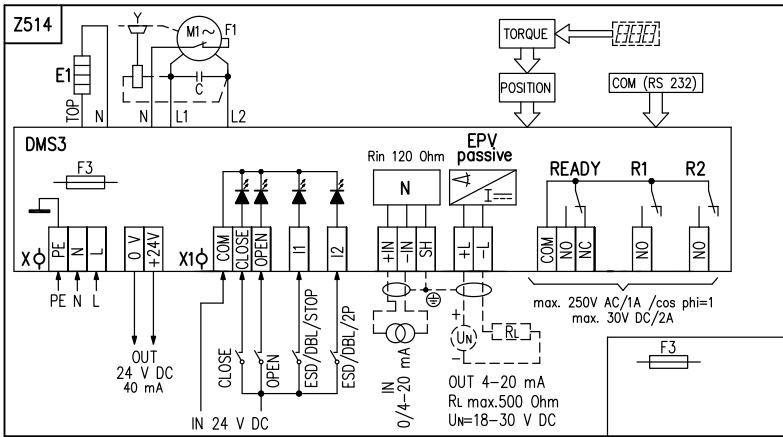
		ISO			
ISO 5211	F10/F12	D-27	27x27	P-1147 P-2032 <sup>66)</sup>	A
		L-27			B
		H-27	27x48 <sup>62)</sup>		C
		V-50	Ø50 <sup>62)</sup>		D
		D-22	22x22		E
		L-22			F
		H-22	22x32		G
		V-42	Ø42		H
		-	- <sup>65)</sup>		M
		H-16	16x22		N
		H-19	19x28		P
		V-45.4	Ø45.4 <sup>63)</sup>		V
-	-	E04	Ø50	P-1395 P-1413/B, P-2032 <sup>66)</sup>	J
-	-	-	-		K
+ + TV 40-1/20	-	-	-		L

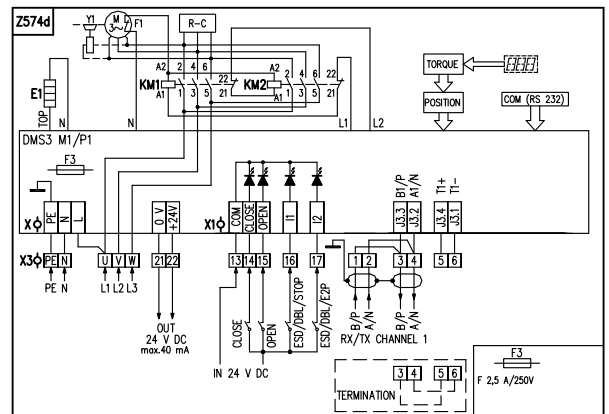
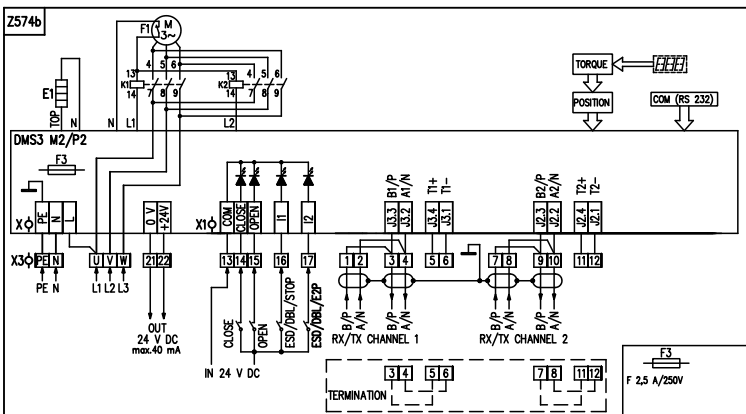
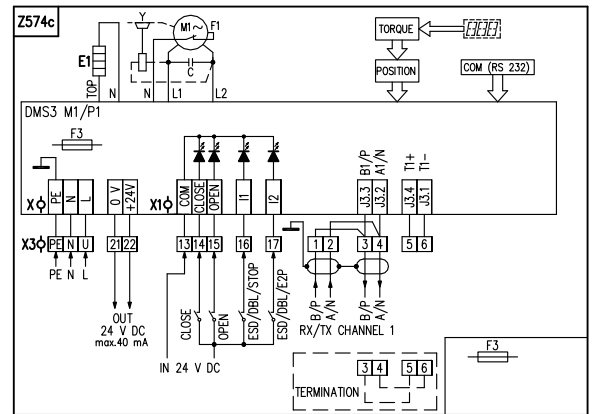
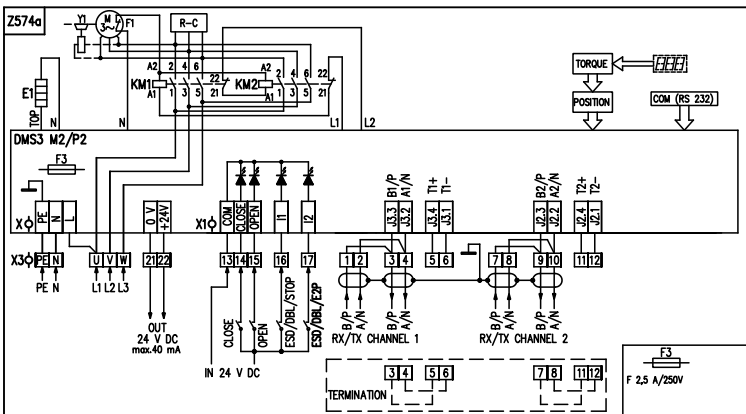
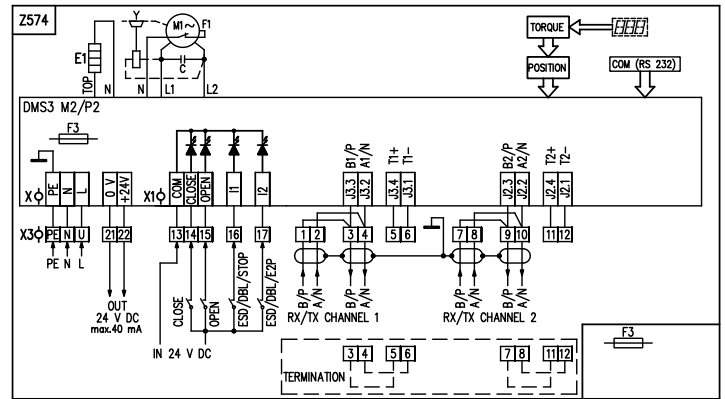
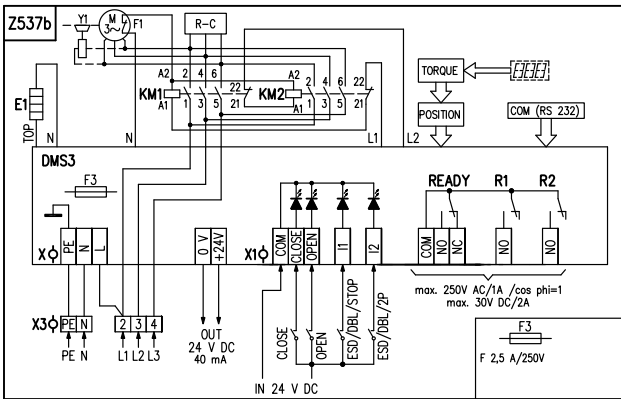
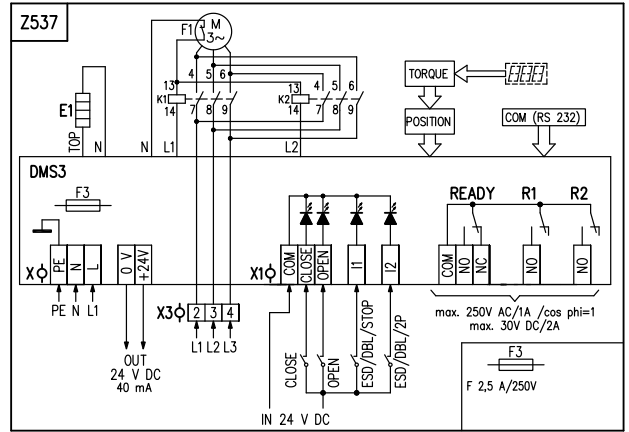
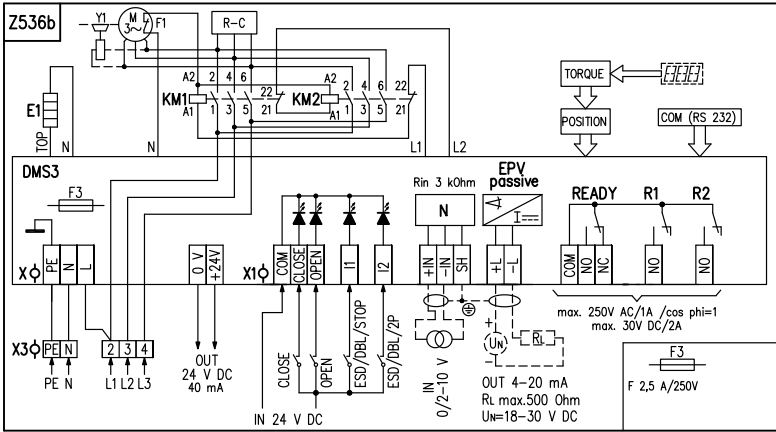
	90°	-		
A		-	0	1
B		-	0	3
D	RE3, RE4, RE5 ( DMS3 RE3) <sup>71)</sup>	Z500a	0	5
E	RE1, RE2, RE3, RE4, RE5, READY ( DMS3 RE6) <sup>71)</sup>	Z500	0	6
F	LCD ( P-2032. <sup>66)</sup> -25°C)	Z473a	0	7
: A+B=20, A+D=22, A+E=23, A+F=24, B+D=29, B+E=30, B+F=31, D+F=40, E+F=44, A+B+D=52, A+B+E=53, A+B+F=54, A+D+F=63, A+E+F=67, B+D+F=80, B+E+F=84, A+B+E+F=113, A+B+D+F=114				

DB-9F/RJ45	224A80100
------------	-----------

10) « » .2.  
 23)  
 32) S2-10 min a S4-25% 90 / .  
 33) S4-25% ,90 - 1200 / .  
 34) 3x380/3x400 VAC.  
 42)  
 62) ( ) .  
 63)  
 64) Ø8.  
 65)  
 66) c DMS3 P-2032.  
 71) PROFIBUS MODBUS RTU. 230/220 VAC 3x400/3x380 VAC.

SPR 1PA - SPR 2.4PA





1. N, L

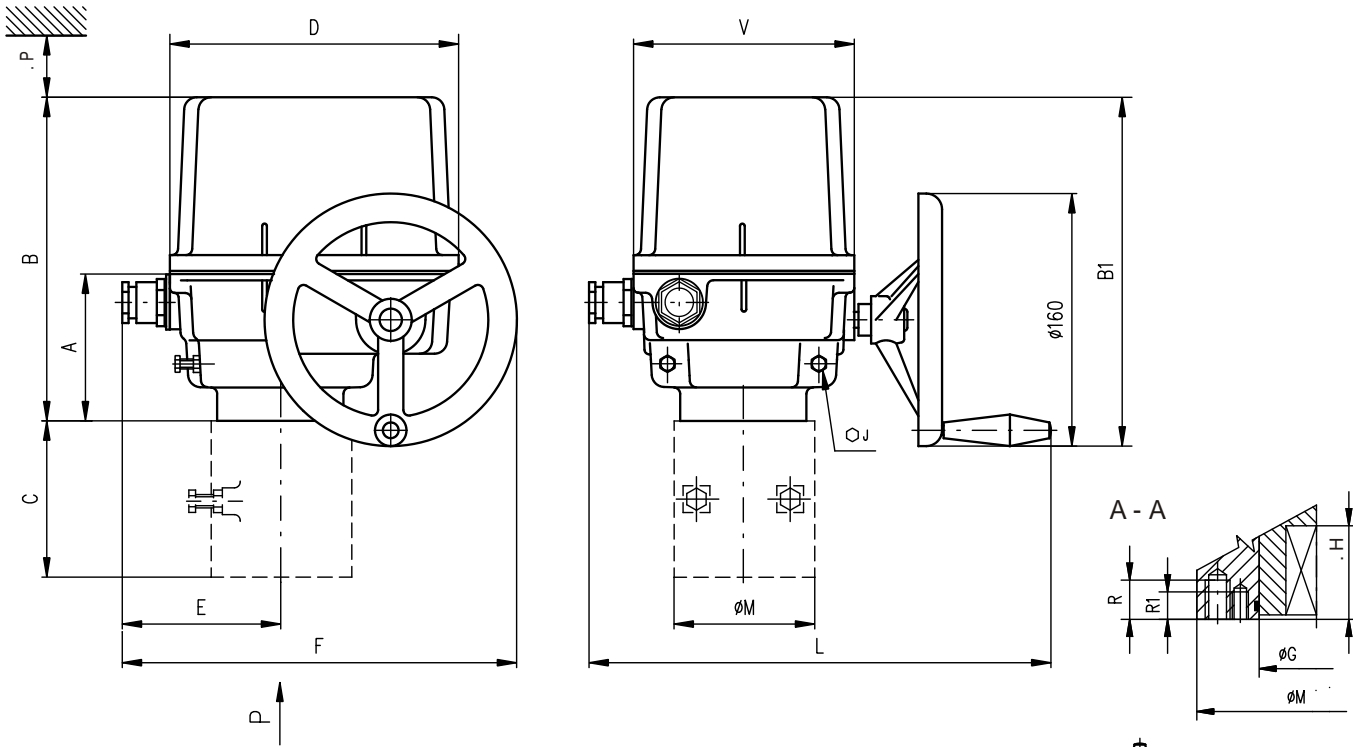
( )

230 VAC, 24 VAC



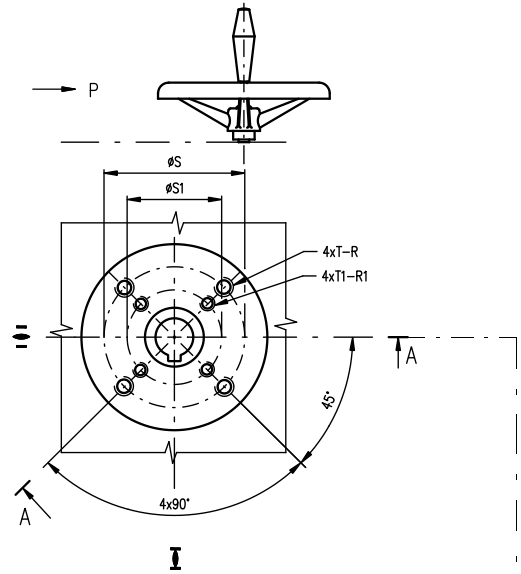


SPR 1PA - SPR 2.4PA



	A	B	B1	C	D	E	F	J	L	M	P	V
SPR 1PA	102	223	239	-	183	93	243	13	280	90	160	140
SPR 2PA				-				17		90		
SPR 2.3PA	117	284	291	112	232	119	294	19	330	125	210	190
SPR 2.4PA				127				22		150		

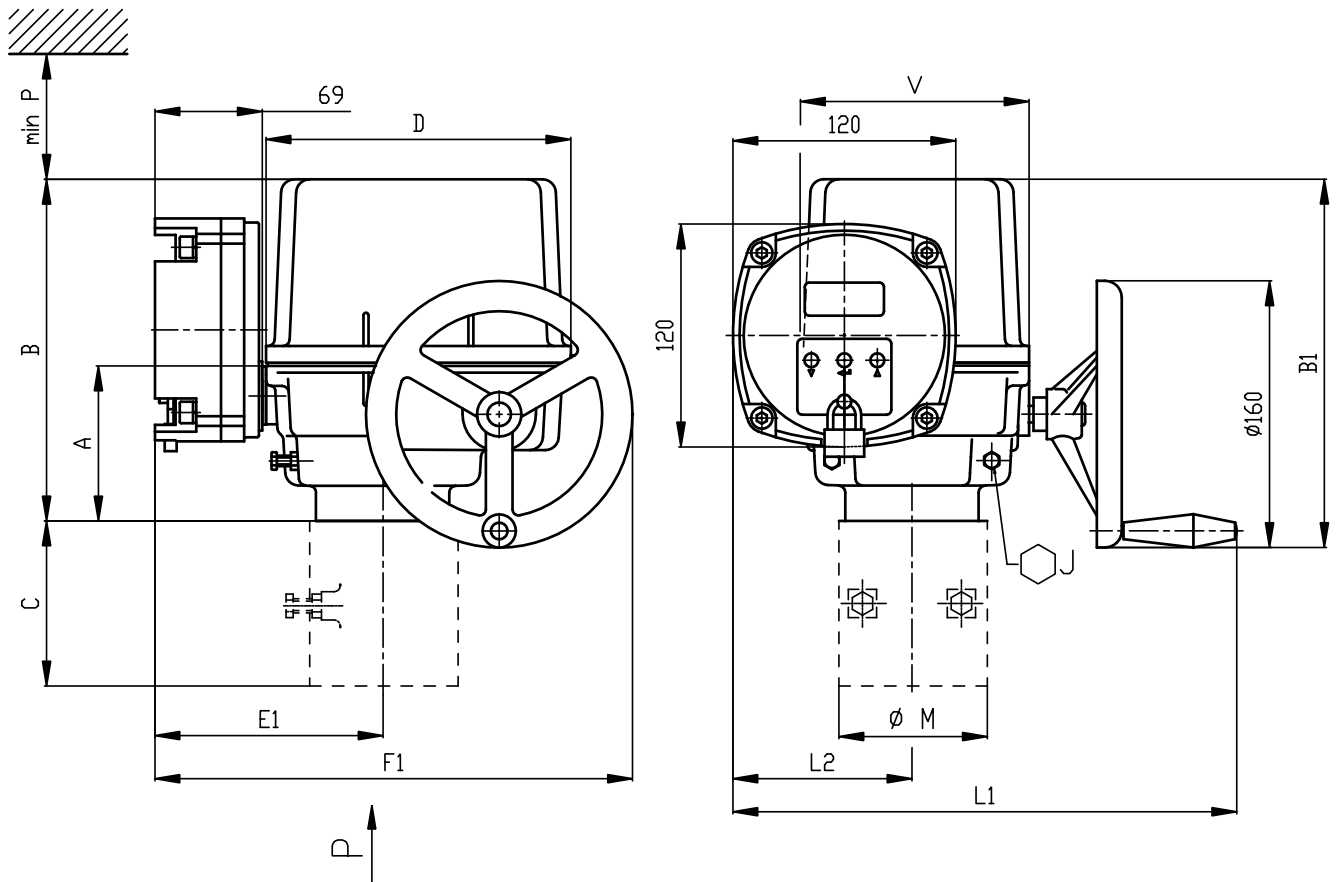
	G	H	R	R1	S	S1	T	T1	
SPR 1PA	40	37	16	12	70	50	M8	M6	F07/F05
SPR 2PA	40	49	16	12	70	50	M8	M6	F07/F05
SPR 2.3PA	55	56	20	16	102	70	M10	M8	F10/F07
SPR 2.4PA	65	71	24	20	125	102	M12	M10	F12/F10



D-xx (Axx)		L-xx (Bxx)		H-xx (Cxx)			V-xx (D01 - D09)		V-30 (D10)	
ISO		ISO		ISO			ISO			
D-xx	U	L-xx	U	H-xx	U	V	V-xx	W	Z	X
D-14	14	L-14	14	H-14	14	22	V-20	20.0	22.5	6.0
D-17	17	L-17	17	H-11	11	18	V-22	22.0	24.5	6.0
D-22	22	L-22	22	H-8	8	13	V-32.2	32.2	35	6.5
D-27	27	L-27	27	H-17	17	25	V-17	17.0	19.5	6.0
D-11	11	L-11	11	H-13	13	19	V-28	28.0	30.9	8.0
D-16	16	L-16	16	H-22	22	32	V-42	42.0	45.1	12.0
				H-16	16	22	V-45.4	45.4	48.8	10.0
				H-27	27	48	V-50	50.0	53.5	14.0
				H-19	19	28	V-18	18.0	20.5	6.0
				H-10	10	16	V-30	30.0	32.5	8.0

c

DMS3

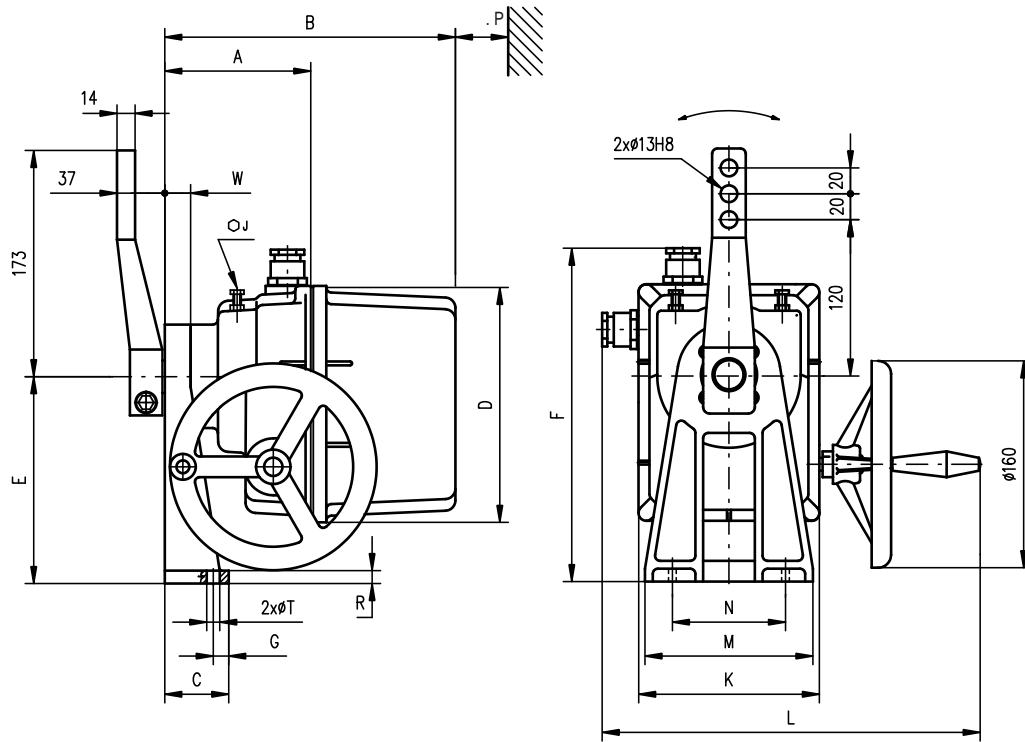


	E1	F1	L1	L2
SPR 1PA	139	288	303	102
SPR 2PA, SPR 2.3PA, SPR 2.4PA	163	337	339	119

P-1162

P - 2032

# SPR 1PA - SPR 2.4PA



Exx		H	S	U	V	Z	Y	Y1		
		SPR 1PA	24.5	22	6	28	25	2	2	E01
		SPR 2PA	27.9	25	8	35	28	2	2	E02

	A	B	C	D	E	E1	F	F1	F2	G	W	J	K	L	M	N	P	R	T
SPR 1PA	123	243	50	183	160	163	258	313	273	12	20	13	140	280	130	80	160	10	10.5
SPR 2PA	132	288	58	232	200	189	323	364	-	30	28	17	190	330	160	90	210	11	12.6

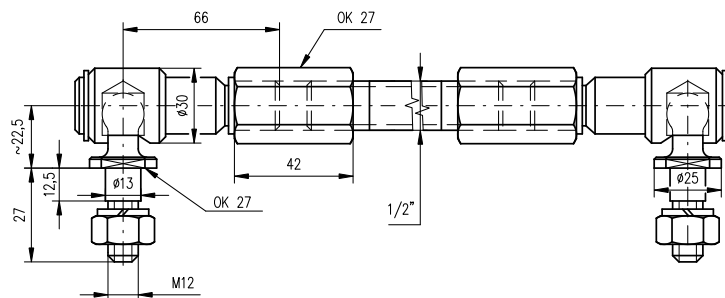
c

DMS3

P-2032

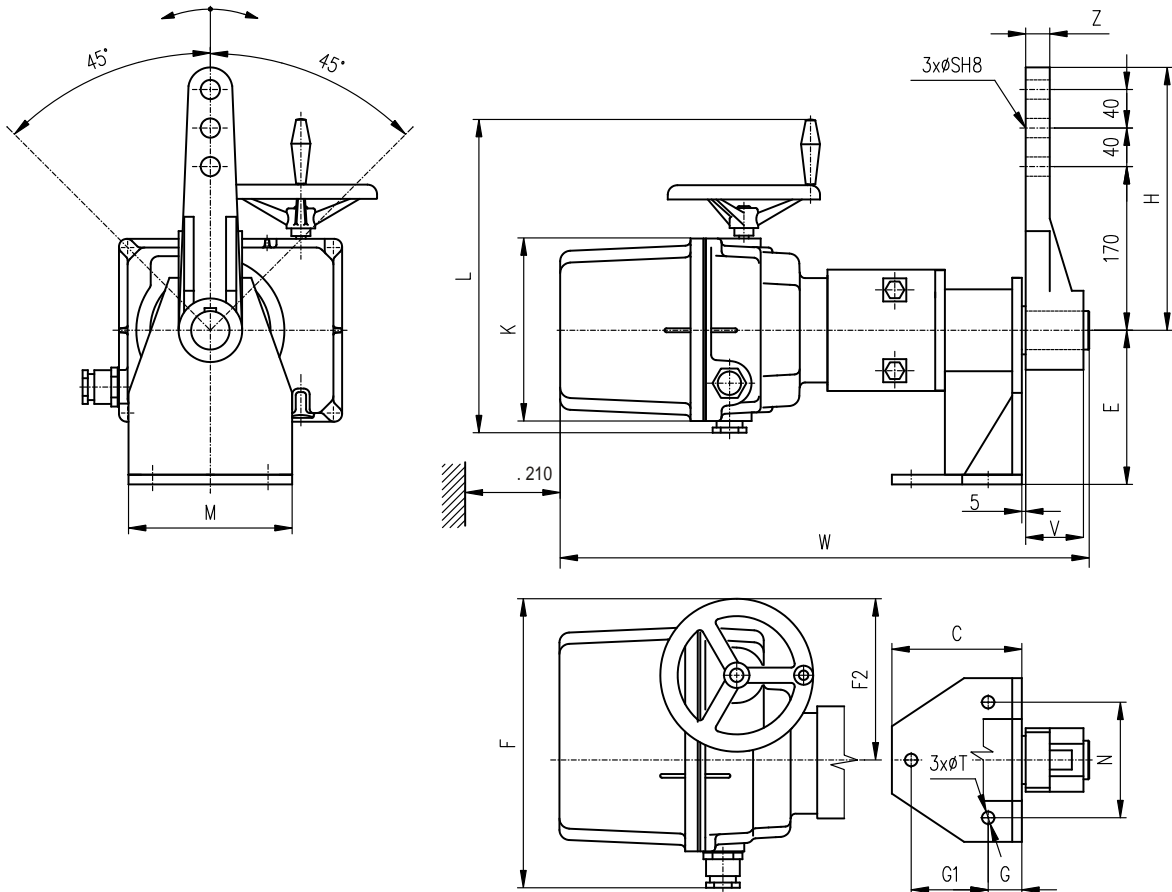
P - 1162

TV 160



P - 0210





	C	E	F	F2	G	G1	H	W	K	L	M	N	S	T	V	Z
SPR 2.3PA	135	160	294	174	35	80	278	532	190	330	170	120	20	13	56	25
SPR 2.4PA	200	220	294	174	60	120	278	593	190	330	228	170	25	17	80	30

c

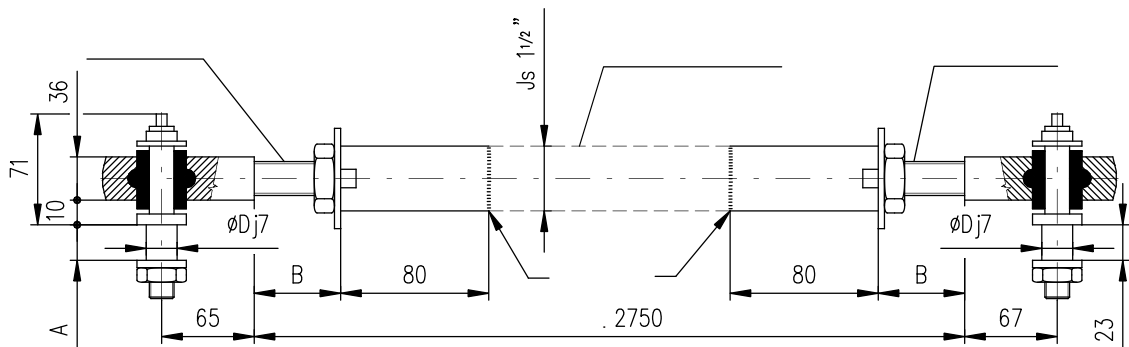
DMS3

P-2032

P - 1395

SP 2.3PA, SPR 2.3PA, SP 2.4PA, SPR 2.4PA

Exx	Y1	Z	V	Y	Uh9	H	S	U	V	Z	Y	Y1		
													ØS	H
SPR 2.3PA						43.1	40	12	66	56	4	7	E03	
SPR 2.4PA						53.8	50	16	82	70	4	7	E04	



P-1413/B	SPR 2.4PA	TV 50-1/25	28	Min.30	25
P-1413/A	SPR 2.3PA	TV 40-1/20	23	Max.50	20
			A	B	D

P - 1413

