

REMATIC, DMS3,
 24 V DC (2P)
 (3P)
 PROFIBUS DP V0/V1 MODBUS RTU.
 : LED , RS-232).
 a a
 « - ».



DMS3

- 220 V AC
-
- T
-
- 60 % 100 %
- ()
- ()
- 2 R1, R2 (18)
- READY
- - 0/4 - 20 mA, 4 - 12 mA, 12 - 20 mA 0/2 - 10 V
- 24 V DC - , ,
- 24 V DC - , ,
-
- ESD ()
- - 4 - 20 mA a ()
- 24 V DC, 40
-
- LED
-
- (, , .)
- RS 232
-
-
- IP 67
-
- RE3, RE4, RE5
- RE1, RE2, RE3, RE4, RE5, READY
- PROFIBUS DP V0/V1,
- MODBUS RTU,

STR 2PA

432. x - x x x x x / x x

10)		12)		o e			
15150	()	60721-2-1	(R)+WDr, MWDr, EWDr	C3	-25°C +55°C	IP 65	0
				C3	-25°C +55°C	IP 67	1
				C4	-25°C +55°C	IP 67	2
				C3	-25°C +55°C	IP 68 ¹¹⁾	5
	()	(M)	C3	-50°C +40°C	IP 67	3	
	()		C3	-25°C +55°C	IP 67	6	
	()	(WW)	C4	-25°C +40°C	IP 67	7	

		23)		
	50 Hz	230 V AC	Z514, Z515, Z523, Z574, Z574c	0
		220 V AC		L
		120 V AC		T
	60 Hz	3x400 V AC	Z532b, Z536b, Z537b Z574a, Z574d	2
		3x380 V AC		N
		3x400 V AC	Z532f, Z536f, Z537f	E
3x380 V AC		F		

31)	32)		33)		50 Hz				60 Hz	DC	
	«	»	50 Hz	60 Hz	230 V 220 V 24 V	3x400 V 3x380 V	240 V 120 V 110 V 24 V				
25 000 N	21 500 N	17 200 N	10 mm/min	12 mm/min	●	-	●	●	A		
			20 mm/min	24 mm/min	●	●	●	●	B		
			32 mm/min	39 mm/min	●	●	●	●	M		
			40 mm/min	48 mm/min	●	●	●	●	C		
			50 mm/min	60 mm/min ³⁷⁾	-	●	-	-	-	S	
20 000 N	17 000 N	13 600 N	60 mm/min	72 mm/min	-	●	-	-	D		
			10 mm/min	12 mm/min	●	-	●	●	H		
			20 mm/min	24 mm/min	●	●	●	●	K		
			32 mm/min	39 mm/min	●	●	●	●	N		
			40 mm/min	48 mm/min	●	●	●	●	Q		
		50 mm/min	60 mm/min ³⁷⁾	●	-	●	●	S			
		-	-	-	60 mm/min	72 mm/min	-	●	-	-	T
					60 mm/min	72 mm/min	●	-	●	●	D
					80 mm/min	100 mm/min	-	●	-	-	V
					80 mm/min	100 mm/min	-	●	-	-	E
100 mm/min	120 mm/min				-	●	-	-	F		
16 000 N	14 000 N	11 200 N	10 mm/min	12 mm/min	●	-	●	●	J		
			20 mm/min	24 mm/min	●	●	●	●	L		
			32 mm/min	39 mm/min	●	●	●	●	P		
			40 mm/min	48 mm/min	●	●	●	●	R		
			50 mm/min	60 mm/min ³⁷⁾	●	-	●	●	T		
		-	-	-	60 mm/min	72 mm/min	-	●	-	-	U
					60 mm/min	72 mm/min	●	-	●	●	V
					80 mm/min	100 mm/min	-	●	-	-	W
					80 mm/min	100 mm/min	●	-	●	●	E
					100 mm/min	120 mm/min	-	●	-	-	Y
12 500 N	10 500 N	-	120 mm/min	145 mm/min	-	●	-	-	Z		
			120 mm/min	145 mm/min	-	●	-	-	G		

		10 - 20 mm	E
		20 - 80 mm	K
		20 - 100 mm	L

STR 2PA

432. x - x x x x x x / x x

	2P	24 V DC				Z515, Z537b, Z537f	F
DMS3	3P/2P	0/4 - 20 mA	24 V DC	4 - 20 mA		Z514, Z532b, Z532f	G
		0/2 - 10 V				Z523, Z536b, Z536f	H
DMS3 M1	/ 2P	MODBUS RTU	24 V DC			Z574c, Z574d	M
DMS3 M2						Z574, Z574a	N
DMS3 P1		PROFIBUS DP V0 / V1				Z574c, Z574d	P
DMS3 P2						Z574, Z574a	R

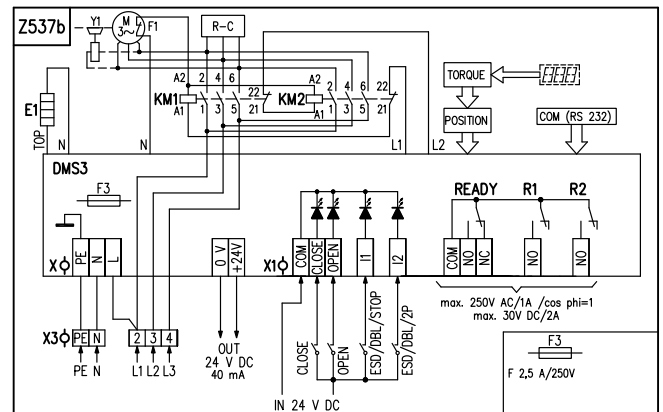
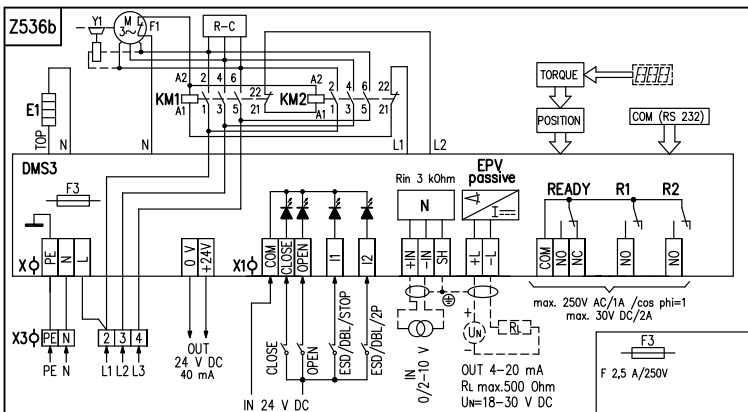
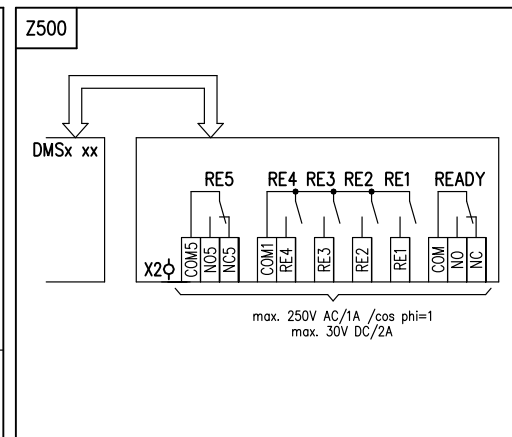
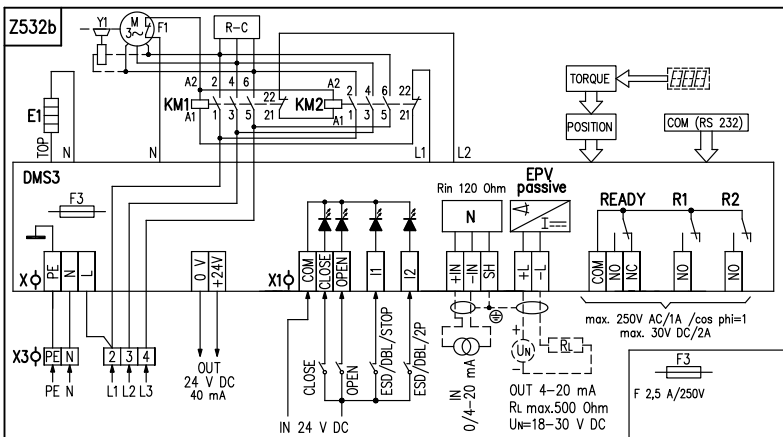
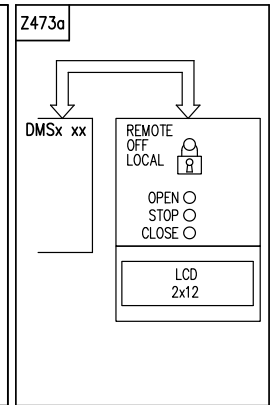
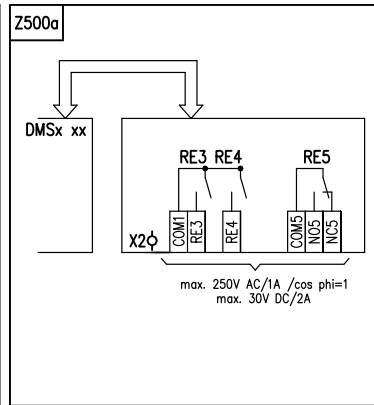
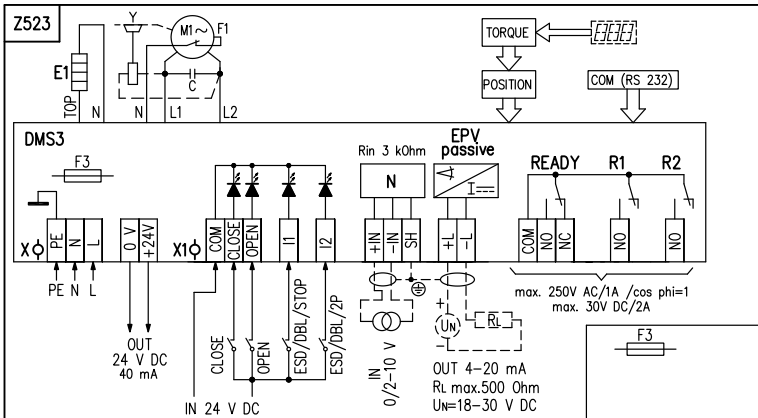
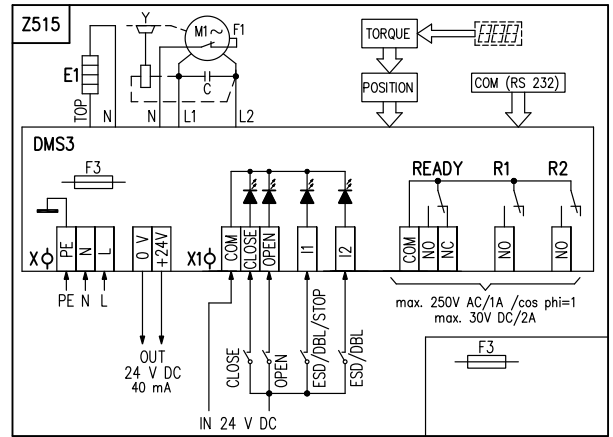
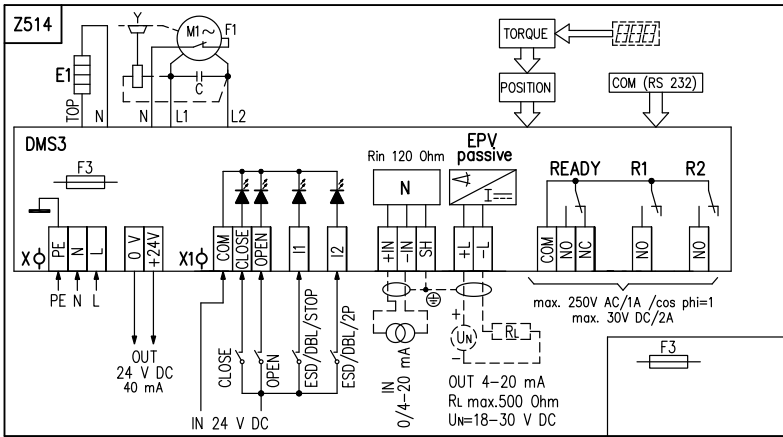
EN 15714-2	40 mm	90 mm	M16x1.5-25	P-2047	P-1245/A	A	
	60 mm	115 mm	M20x1.5-30		P-1245/B	B	
4	80 / 100 mm	110 mm	M16x1.5-34 M20x1.5-34 M14x2-34 7/8"-UN-9	P-1246a/A	D		
		112 mm		P-1246a/B	E		
		125 mm		P-1246a/C	3		
		110 mm		P-2000a/A	F		
		112 mm		P-2000a/B	G		
80 / 100 mm	92 mm	P-1247a/A		J			
	30 mm	P-1247a/B		K			
	74 mm	P-1247a/C		L			
	126 mm	P-1247a/D		M			
	max. 80 mm	P-1247a/E		7			
4	80 / 100 mm	92 mm		P-2001a/A	N		
		30 mm		P-2001a/B	P		
		74 mm		P-2001a/C	Q		
		126 mm		P-2001a/D	R		

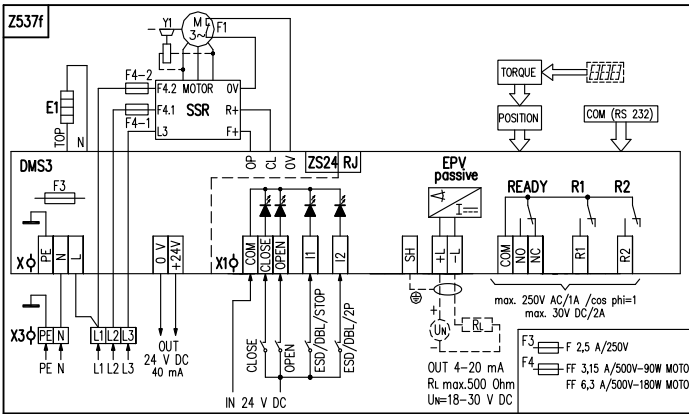
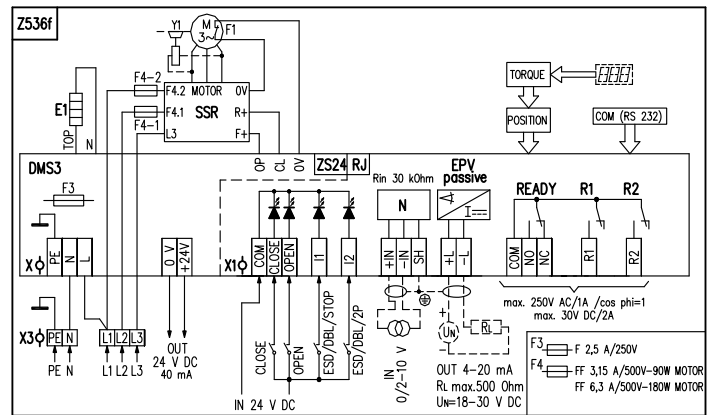
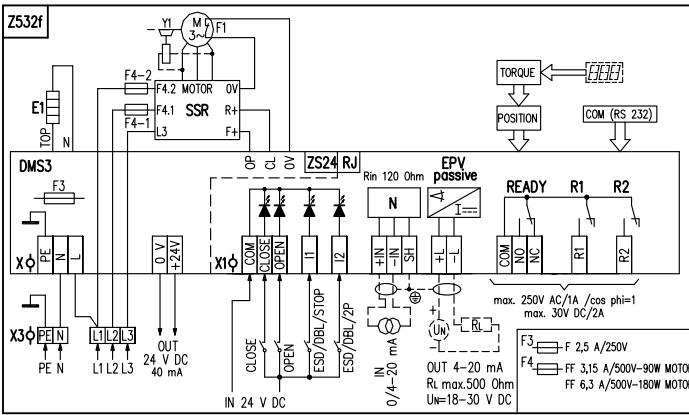
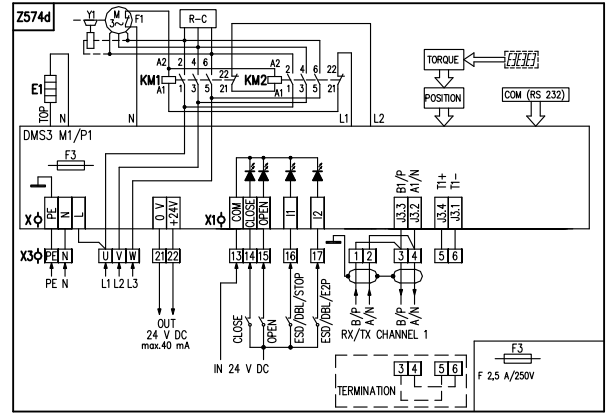
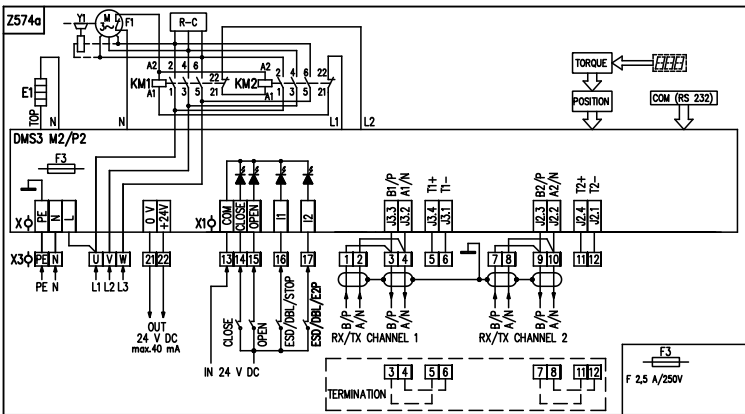
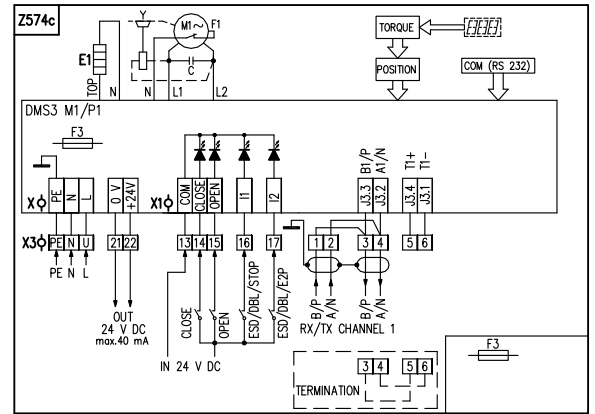
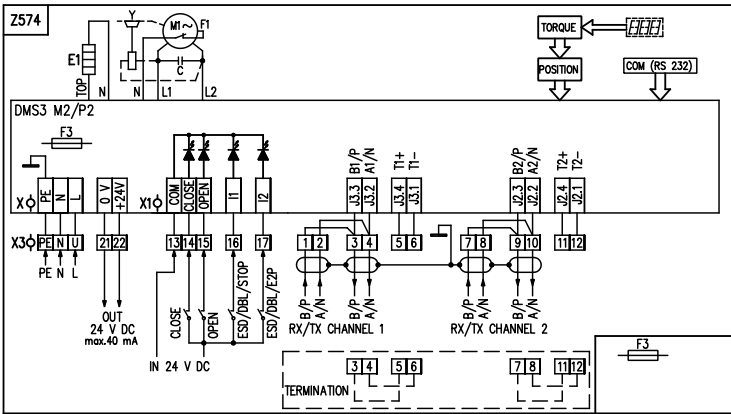
A					-	0 1
B					-	0 3
D	RE3, RE4, RE5 (DMS3 RE3) ⁷¹⁾				Z500a	0 5
E	RE1, RE2, RE3, RE4, RE5, READY (DMS3 RE6) ⁷¹⁾				Z500	0 6
F	LCD (P-2047. -25°C)				Z473a	0 7
: A+B=20, A+D=22, A+E=23, A+F=24, B+D=29, B+E=30, B+F=31, D+F=40, E+F=44, A+B+D=52, A+B+E=53, A+B+F=54, A+D+F=63, A+E+F=67, B+D+F=80, B+E+F=84, A+B+E+F=113, A+B+D+F=114						

DB-9F/RJ45	224A80100
------------	-----------

10) « » .2.
 11) IP 68 - 10 / 48
 23)
 31) 60 100 %
 32) S2-10 min a S4-25% 90 /
 33) S4-25% , 90 - 1200 /
 37) (S4-25% , 90-1200 /).
 62)
 71) 230/220 V AC 3x400/3x380 V AC.
 PROFIBUS MODBUS RTU.

STR 2PA





1. N, L

()

230V AC, 24 V AC

- 3	- 1 16 -	6	10,5	1x	16 -	9	13	()	1x	20 -	8	14,5
- 2	- 1 16 -	6	10,5	1x	16 -	9	13	()				
X -												
PE, N, L		(0,05 - 1,5 mm ²)			220/230/240 V AC, 120 V AC,			24 V AC, 50/60 Hz				
0 V, +24 V		() 1,5 mm ²			24 V DC (40 mA)							
X1 -												
COM, CLOSE OPEN, I1, I2		(0,05 - 1 mm ²)						24 V DC				
+IN, -IN, SH		(0,05 - 1 mm ²)						0/4-20 mA (0/2-10V)				
+L, -L, SH		(0,05 - 1 mm ²)				()		4-20 mA				
COM, NO, NC		(0,05 - 1,5 mm ²)	READY									
COM, NO		(0,05 - 1,5 mm ²)	R1, R2									
X2 -												
COM1, RE1, RE2, RE3, RE4		(0,05 - 1,5 mm ²)	RE1, RE2, RE3, RE4									
COM5, NO5, NC5		(0,05 - 1,5 mm ²)	RE5									
COM, NO, NC		(0,05 - 1,5 mm ²)	READY									
Z473a ...												
Z500		6-										
Z500a ...		3-										
Z514			a						0/4 - 20 mA		c	
	4 - 20 mA		a									
Z515			a									
Z523			a					0/2 - 10 V			c	
	4 - 20 mA		a									
Z532b ...			a						0/4 - 20 mA		c	
	4 - 20 mA		a									
Z532f ...			a						0/4 - 20 mA		c	
	4 - 20 mA		a									
Z536b ...			a						0/2 - 10 V		c	
	4 - 20 mA		a									
Z536f ...			a						0/2 - 10 V		c	
	4 - 20 mA		a									
Z537b ...			a									
Z537f ...			a									
Z574			e					MODBUS / PROFIBUS -				
Z574a								e			MODBUS / PROFIBUS -	
Z574c ...			e					MODBUS / PROFIBUS -				
Z574d ...								e			MODBUS / PROFIBUS -	

C												
COM(RS232)					PC							
EPV passive		(EPV)										
E1												
F1												
F2												
F3												
M1~ / M3~												
N												
R												
POSITION												
Rin												
R _l												
UN		EPV										
R1, R2												
READY		()										
RE1 o RE5												
TORQUE												
DMS3												

R1, R2, RE1, RE2, RE3, RE4, RE5:

READY: o ; o ; o ; o

(EPV): 4 - 20 mA, 20 - 4 mA.

(): 2P, 3P, 3P/2P I2.

(N): 4 - 20 mA, 20 - 4 mA, 0 - 20 mA, 20 - 0 mA, 4 - 12 mA, 12 - 4 mA, 12 - 20 mA, 20 - 12 mA;

: 2 - 10 V, 10 - 2 V, 0 - 10 V, 10 - 0 V

I1: "; DBL (); ESD (Emergency shut down - I1

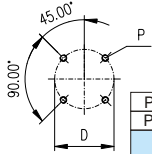
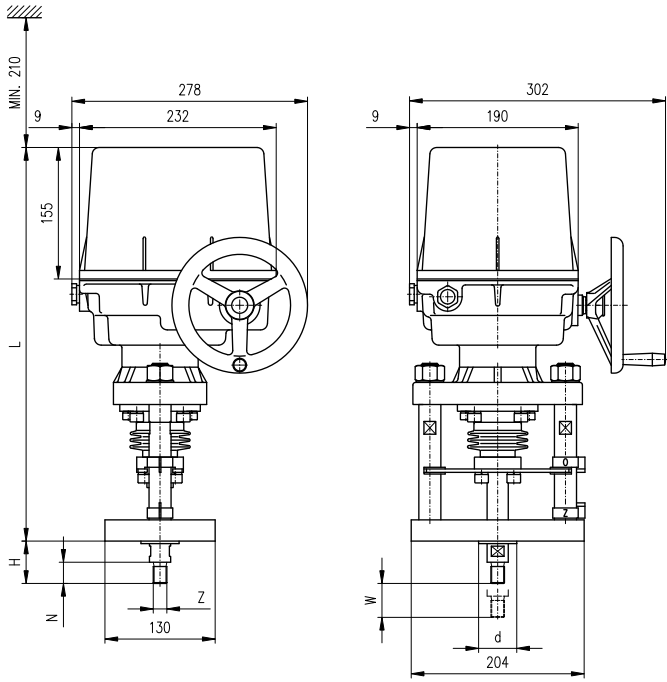
"); DBL (); ESD (Emergency shut down - I2

"); DBL (); 2P (24 V DC).

o : 3P/2P I2 ; I2 ;

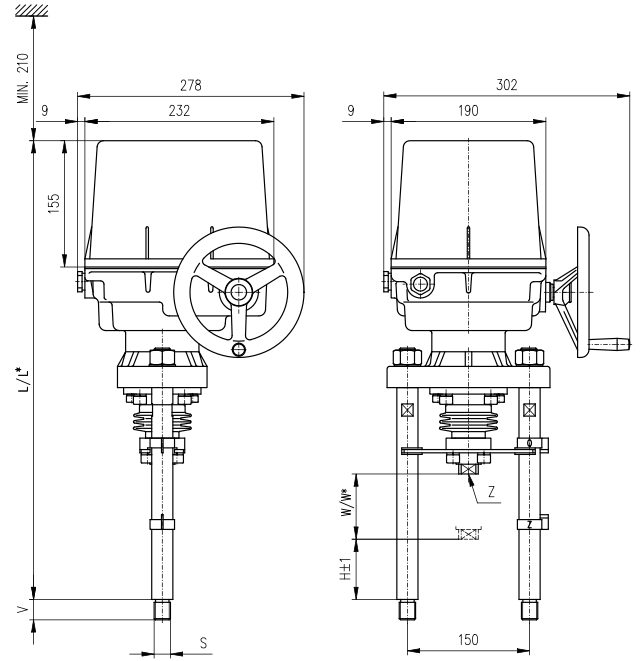
I1, I2 ESD I2). (ESD I1,

STR 2PA



P-1245

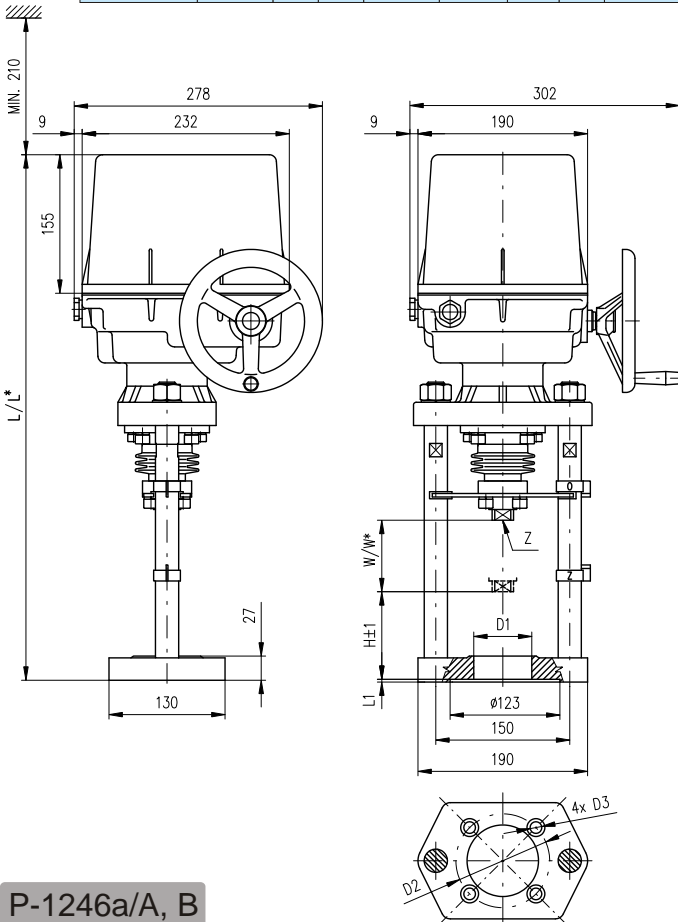
P-1245/B	F10	102	ø70	60	491	55	30	M10	M20x1.5
P-1245/A	F07	70	ø55	40	471	50	25	M8	M16x1.5
		D	d	W	L	H	N	P	Z



P-1247a

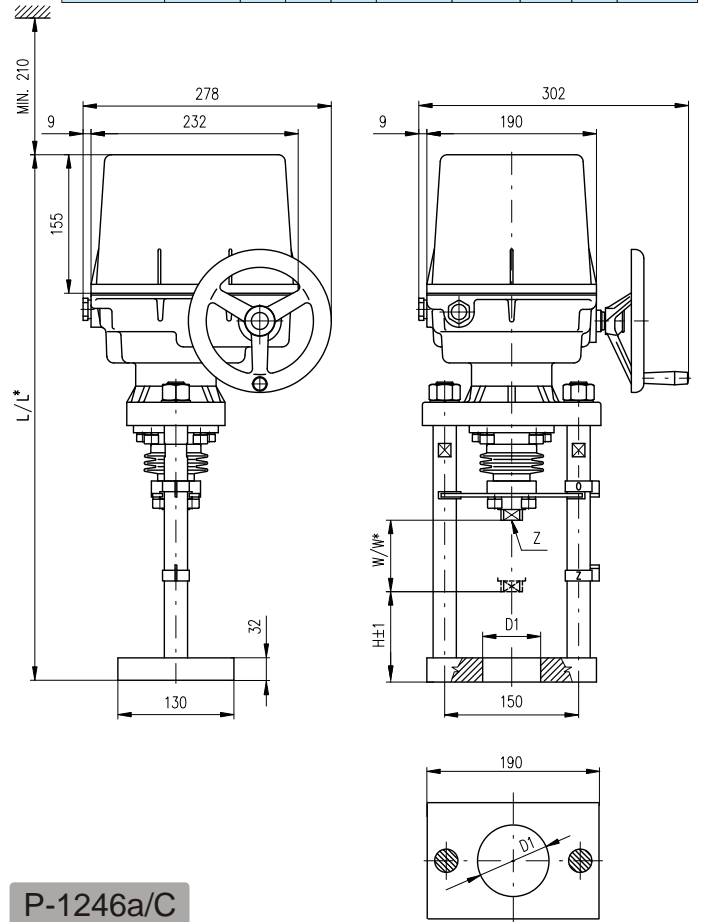
P-1247a/E	70	570	M20	25	max. 80	M20x1.5 M16x1.5
P-1247a/D	126	622 / 642	M20	25	max. 80 / 100	
P-1247a/C	74	570 / 590	M20	25	max. 80 / 100	
P-1247a/B	30	525 / 545	M20	25	max. 80 / 100	
P-1247a/A	92	588 / 608	M16	40	max. 80 / 100	
	H	L / L*	S	V	W / W*	Z

P-1246a/B	609 / 629	2	112	80 / 100	ø80	ø105	ø13	M20x1.5
P-1246a/A	609 / 629	3	110	80 / 100	ø65H12	-	-	M16x1.5 M14x2
	L / L*	L1	H	W / W*	D1	D2	D3	Z

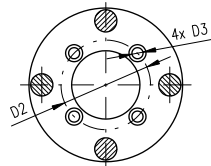
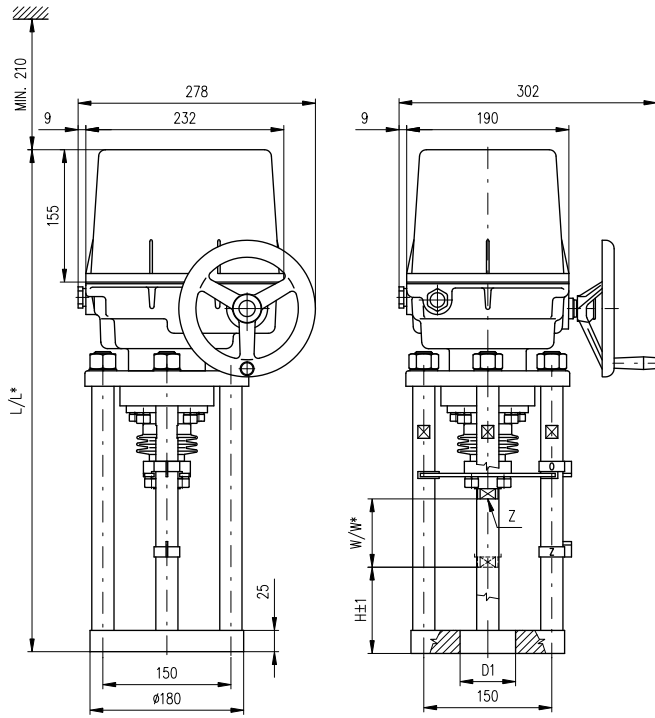


P-1246a/A, B

P-1246a/C	621 / -	-	32	125	80 / -	ø68	-	-	7/8"-UN9
	L / L*	L1	M	H	W / W*	D1	D2	D3	Z



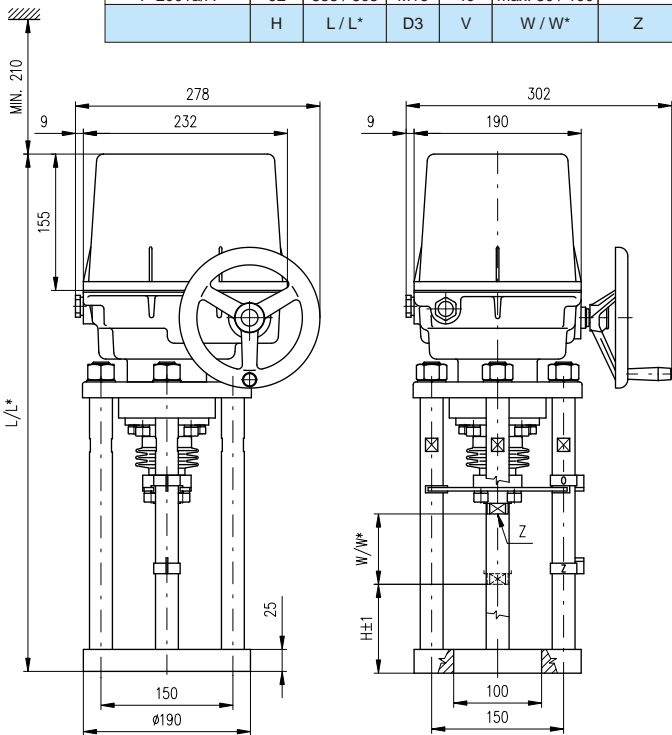
P-1246a/C



							M20x1.5
P-2000a/B	609 / 629	112	80 / 100	∅80	∅105	∅13	M16x1.5
P-2000a/A	609 / 629	110	80 / 100	∅65H12	-	-	M14x2
	L / L*	H	W / W*	D1	D2	D3	Z

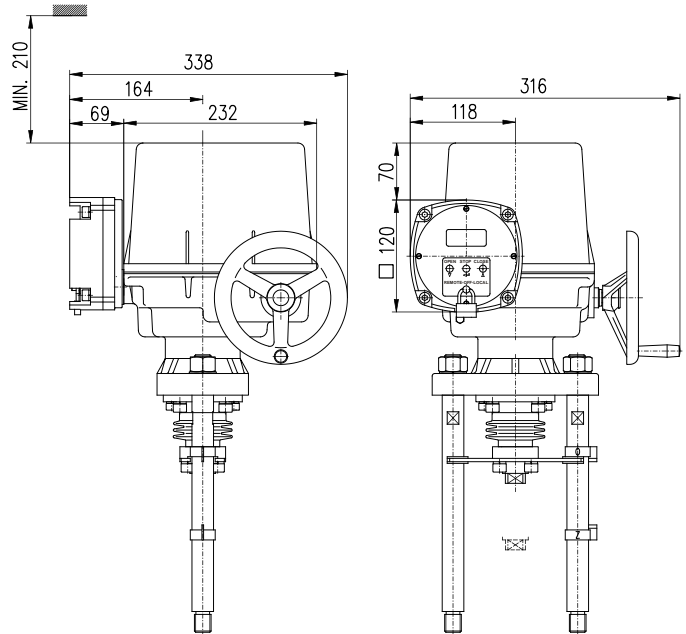
P-2000a

P-2001a/D	126	622 / 642	M20	25	max. 80 / 100	
P-2001a/C	74	570 / 590	M20	25	max. 80 / 100	M20x1.5
P-2001a/B	30	526 / 546	M20	25	max. 80 / 100	M16x1.5
P-2001a/A	92	588 / 608	M16	40	max. 80 / 100	
	H	L / L*	D3	V	W / W*	Z



P-2001a

DMS3



P-2047