

II 2G Ex d IIC T5 Gb
 II 2G Ex de IIC T5 Gb ()
 II 2D Ex tb IIIC T100°C Db

ULR 1PA-Ex

REMATIC, DMS3,
 24 V DC (2P)
 (3P)
 PROFIBUS DP V0/V1 MODBUS RTU.
 : LED (RS-232).
 a a
 « - ».



DMS3

- 220 V AC
-
- T
-
- a 60 % 100 %
- ()
- ()
- 2 R1, R2 (18)
- READY
- - 0/4 - 20 mA, 4 - 12 mA, 12 - 20 mA 0/2 - 10 V
- 24 V DC - , ,
- 24 V DC - , ,
-
- ESD ()
- - 4 - 20 mA a ()
- 24 V DC, 40
- (, , .)
-
- LED
- RS 232
-
- ISO 5210
-
- IP 66 / IP 67
-
- RE3, RE4, RE5
- RE1, RE2, RE3, RE4, RE5, READY
- PROFIBUS DP V0/V1,
- MODBUS RTU,

ULR 1PA-Ex

546	x	-	x	x	x	x	x	/	x	x
-----	---	---	---	---	---	---	---	---	---	---

15150		3.1		60721-2-1		10)		e		T5		IP 66/IP 67		
15150	()	3 ()	3 ()	3 ()	3 ()	(R)+WDr, MWDr, EWDr	-25°C ÷ +55°C	C3	C3	C3	C3	C3	C3	1
														2
														5
														3
														6
														6
														7
						(M)	-50°C ÷ +40°C	C3						
							-25°C ÷ +55°C	C3						
						(WW)	-50°C ÷ +40°C	C4						

		23)					
		50 Hz	230 V AC	Z514, Z523, Z515 Z574c, Z563	0	L	
			220 V AC				
		60 Hz ²⁴⁾	120V AC	Z514, Z523, Z515 Z574c, Z563	T	B	
			110 V AC				
		50 Hz	3x400 V AC	Z532, Z536, Z537 Z574e, Z563b	2	N	
			3x380 V AC				

31)		32)		33)			
« -- »				50 Hz	60 Hz		
12 500 N	10 000 N	5 000 N		10 mm/min	12 mm/min	A	
				20 mm/min	24 mm/min		
10 000 N	8 000 N	4 000 N		40 mm/min	48 mm/min	C	
8 000 N	6 300 N	3 200 N		10 mm/min	12 mm/min	M	
				20 mm/min	24 mm/min		
				40 mm/min	48 mm/min		
				80 mm/min	96 mm/min		
4 800 N	4 000 N	2 000 N		10 mm/min	12 mm/min	K	
				20 mm/min	24 mm/min		
				40 mm/min	48 mm/min		
				80 mm/min	96 mm/min		
2 100 N	1 700 N	800 N		10 mm/min	12 mm/min	L	
				20 mm/min	24 mm/min		
				40 mm/min	48 mm/min		
				80 mm/min	96 mm/min		

10		10 - 80		A	

DMS3	2P	24 V DC		-	Z515, Z537	F	
	3P/2P	0/4 - 20 mA	24 V DC		4 - 20 mA	Z514, Z532	G
		0/2 - 10 V				Z523, Z536	H
DMS3 M1	/2P	MODBUS RTU			Z574c, Z574e	M	
DMS3 M2			24 V DC		Z563, Z563b	N	
DMS3 P1		PROFIBUS DP V0 / V1			Z574c, Z574e	P	
DMS3 P2					Z563, Z563b	R	

ULR 1PA-Ex

546. x - x x x x x / x x

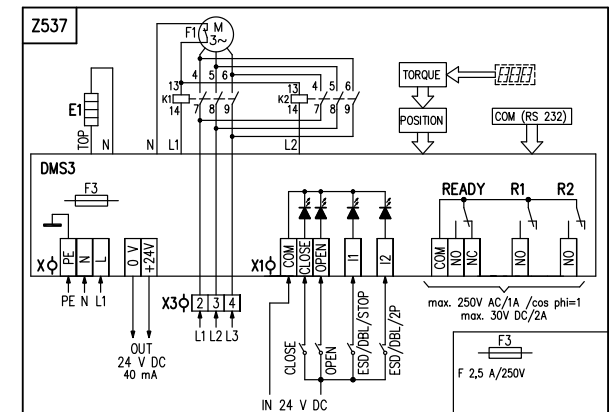
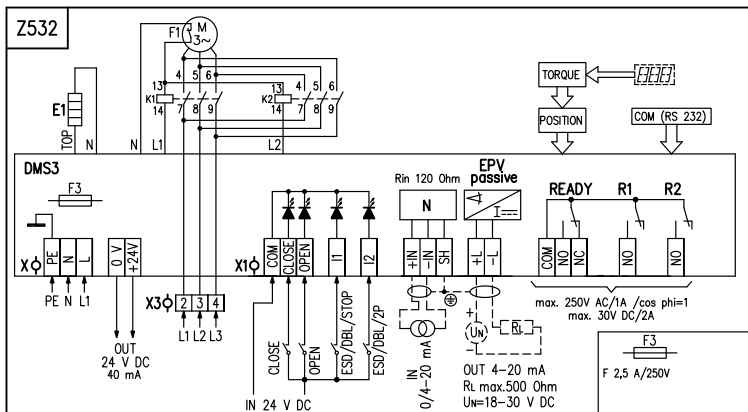
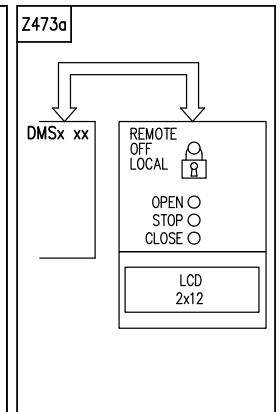
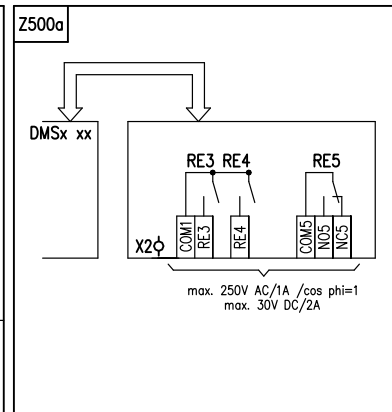
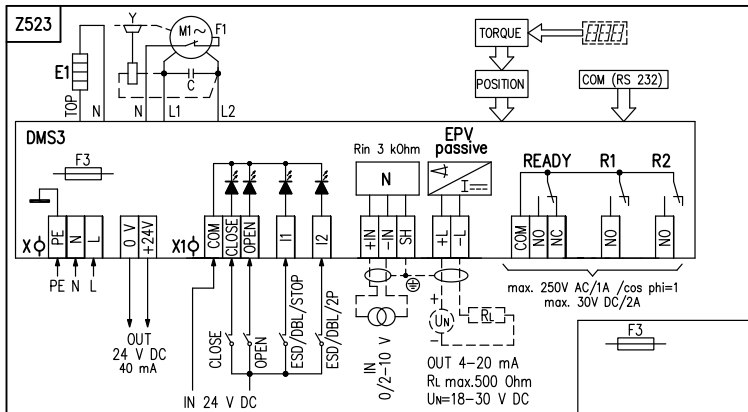
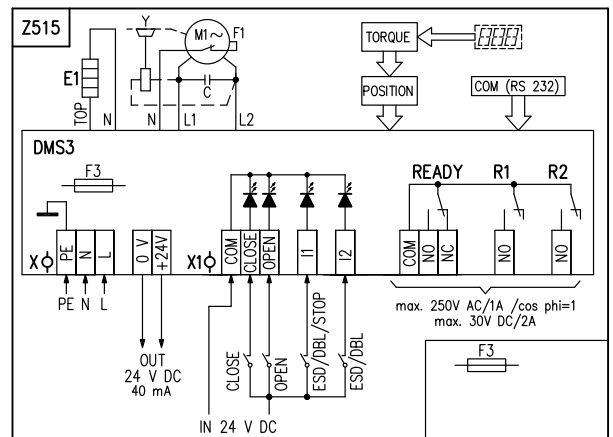
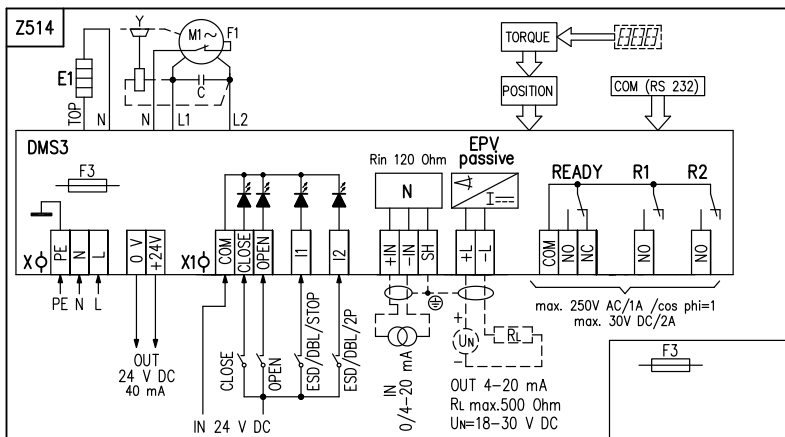
				62)		↓	
- EN 15714-2	F07 (Y/55)	40 mm	50 mm	M16x1.5-25	P-2055/A	A	
	F10 (Y/70)	60 mm	55 mm	M20x1.5-30	P-2055/B	B	
2		50 mm (80) mm	103/65H12	M10x1-28 M12x1,25-20 M12-28 M16X1,5-28 UN 7/8" -9		H	
			110/65H12			4	
			112/80H8			Q	
			92/57,15H8			G	
			102/57,15H			Z	
			94/58,1H8			Y	
			50/45H12			F	
			75/45H12			E	
			90/45H12			C	
			100/45H12			D	
			85/65H12			3	
	A		127/110			P-2053/A	K
	B		42/110			P-2053/B	L
	C		80/110			P-2053/C	M
D	27/100		P-2053/D	N			
E	57/100		P-2053/E	P			
F	110/100		P-2053/F	R			
4			103/65H12			J	
			110/65H12		P-2057/F	1	
			112/80H8			2	
			92/57,15H8		P-2057/G	6	
			102/57,15H		P-2057/H	7	
			94/58,1H8			8	
			50/45H12		P-2057/D	9	
			75/45H12		P-2057/C		
			90/45H12		P-2057/A	5	
			100/45H12		P-2057/B	V	
			85/65H12		P-2057/E		
	A	127/110				T	
	B	42/110				U	
	C	80/110				S	
	D	27/100				W	
	E	57/100					
	F	110/100					
						X	

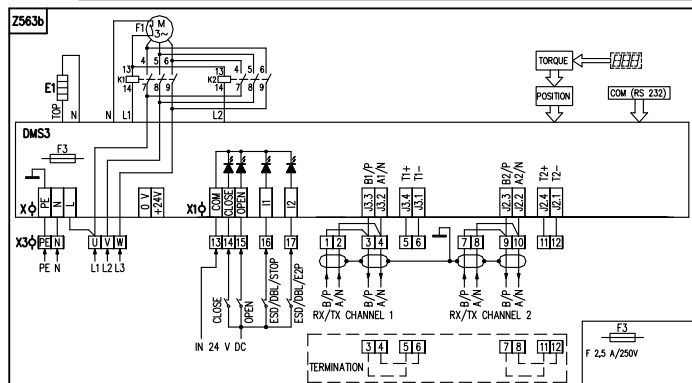
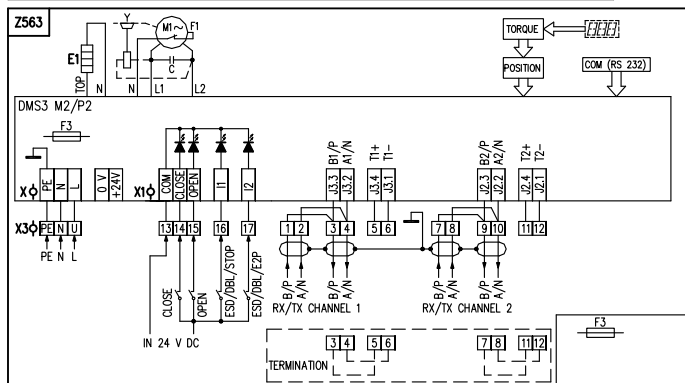
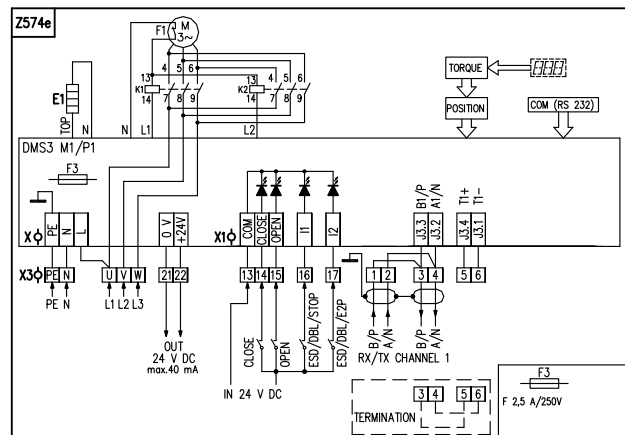
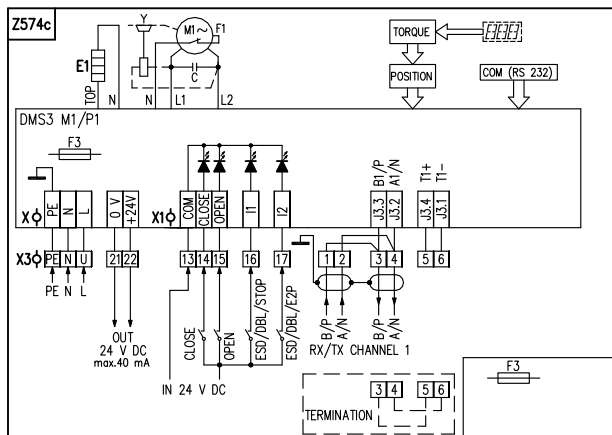
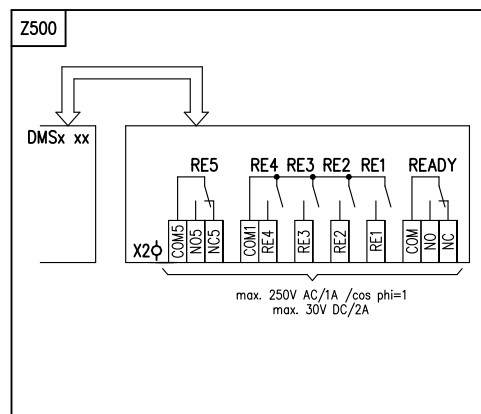
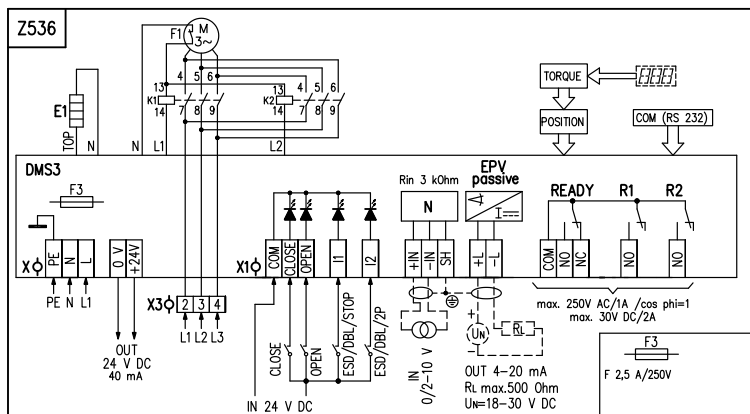
		/		↓	↓
A				0	1
B				0	3
D	RE3, RE4, RE5 (DMS3 RE3) ⁷¹⁾		Z500a	0	5
E	RE1, RE2, RE3, RE4, RE5, READY (DMS3 RE6) ⁷¹⁾		Z500	0	6
F	LCD (-25°C)		Z473a	0	7
K	„e“ ⁷²⁾		-	1	1
: A+B=20, A+D=22, A+E=23, A+F=24, B+D=29, B+E=30, B+F=31, D+F=40 ,E+F=44, A+B+D=52, A+B+E=53, A+B+F=54, A+D+F=63, A+E+F=67, B+D+F=80, B+E+F=84, A+B+E+F=113, A+B+D+F=114					

DB-9F/RJ45 DMS3	224 A80 100
-----------------	-------------

- 10) „e“
- 11) IP 68 - 10 / 48
- 23) „d“
- 24) 60
- 31) 60 100 % 80 %
- 32) S2-10 min a S4-25% 90 /
- 33) S4-25% , 90 - 1200 /
- 71) PROFIBUS MODBUS RTU. 230/220 V AC 3x400/3x380 V AC.
- 72) „d“ „e“ Exd

ULR 1PA-Ex



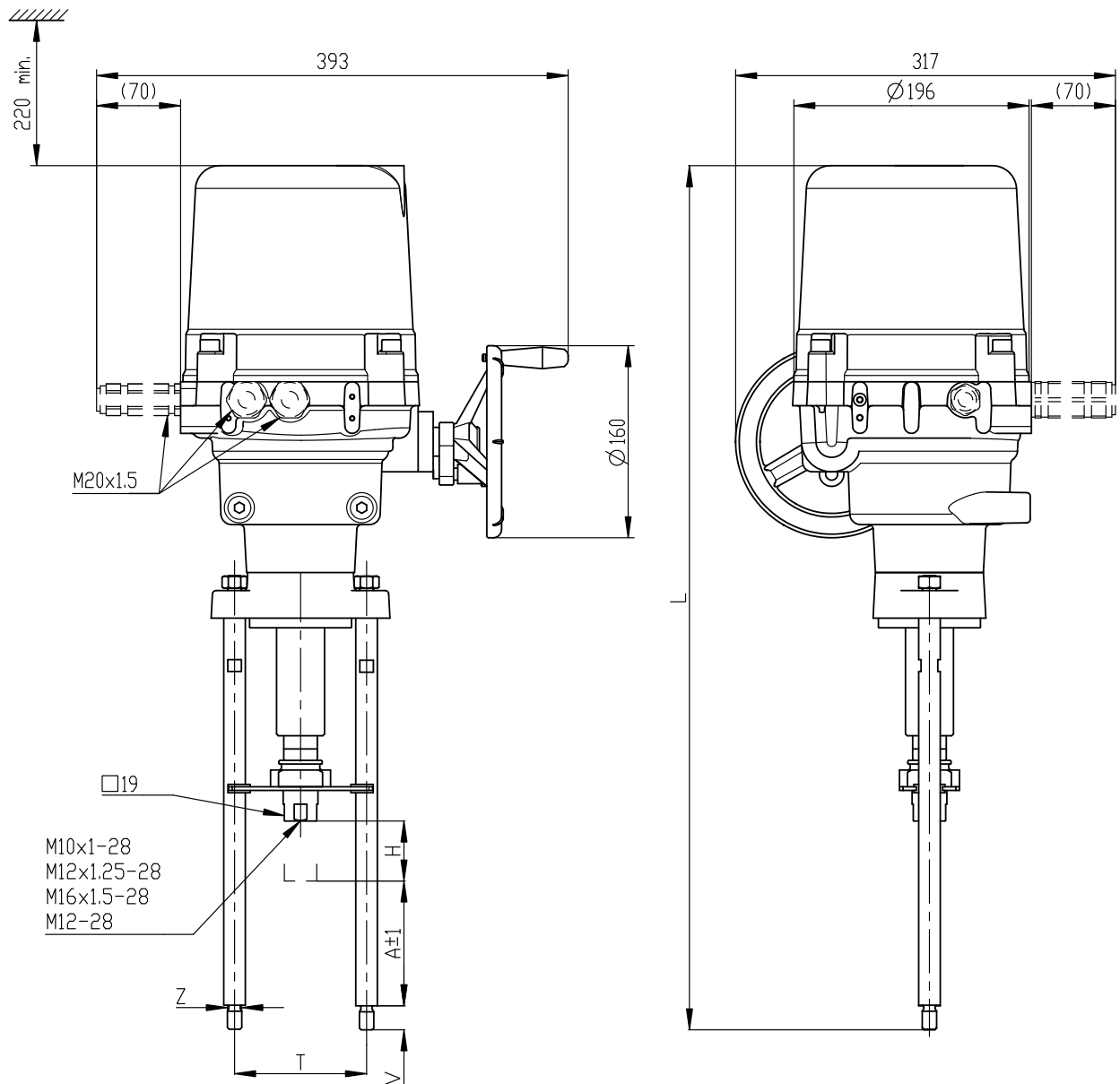


32
2.5
3
d.
2

IECEX/ATEX

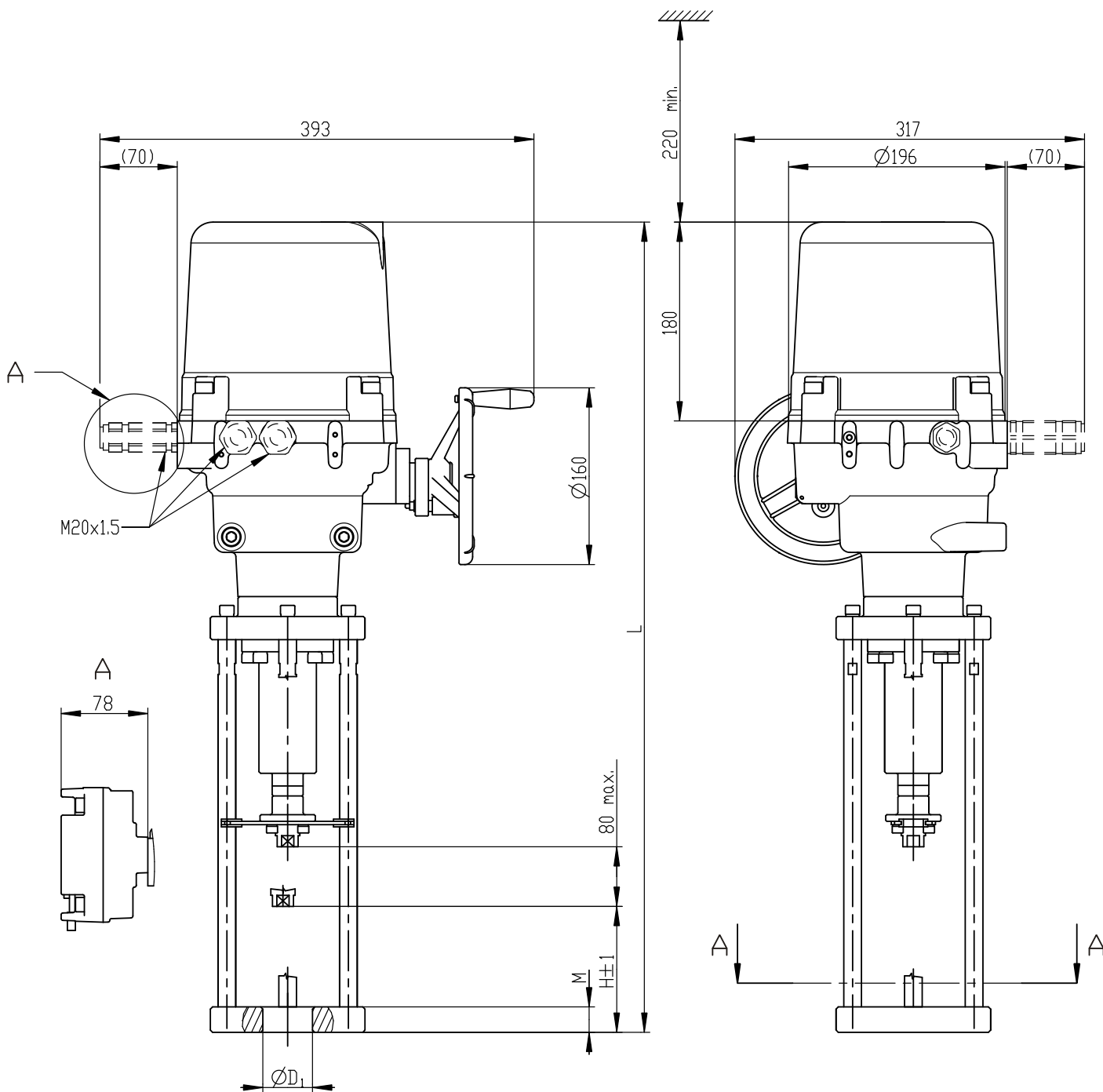
X -			
PE, U, V, W	(0,05 - 2,5 mm ²)	(3x400/3x380 V AC, 50 Hz	
0 V, +24 V2	(0,05 - 1 mm ²)	24 V DC (100 mA)
X1 -			
COM, CLOSE OPEN, I1, I2 ...	(0,05 - 1 mm ²)		24 V DC
+IN, -IN, SH.....	(0,05 - 1 mm ²)		0/4-20 mA
+L, -L	(0,05 - 1 mm ²)		() 4-20 mA
COM, NO, NC	(0,05 - 1,5 mm ²)	READY ()
R1, R2.....	(0,05 - 1,5 mm ²)	R1, R2()
COM, NO, NC	(0,05 - 1,5 mm ²)	READY ()
X2 -			
COM1, RE1, RE2, RE3, RE4...	(0,05 - 1,5 mm ²)	RE1 RE4 ()
COM5, NO, NC.....	(0,05 - 1,5 mm ²)	RE5 ()
X3 -			
L1, L2, L3	svorky (0,05 - 1,5 mm ²)	napájacieho napätia 3x400 V AC, 50 Hz	
READY		READY	
R 1 R 2			R1 R2

ULR 1PA-Ex

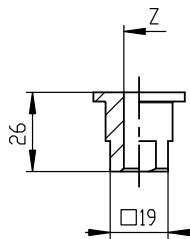


P-2053/A	127	50 (80)	110	M12	20	743
P-2053/B	42		110	M12	20	658
P-2053/C	80		110	M12	32	696
P-2053/D	27		100	M16	16	643
P-2053/E	57		100	M16	16	673
P-2053/F	110		100	M16	16	726
	A	H	T	Z	V	L

P - 2053

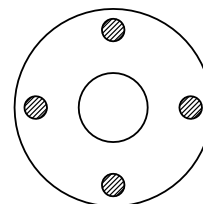


P-2057/A	45 H12	90	736	23	G
P-2057/B	45 H12	100	746	23	
P-2057/C	45 H12	75	721	17	
P-2057/D	45 H12	50	696	17	
P-2057/E	65.15 H7	85	731	23	D
P-2057/F	65.15 H7	110	756	30	
P-2057/G	57.15 H7	92	738	30	E
P-2057/H	57.15 H7	102	748	30	
	D ₁	H	L	M	

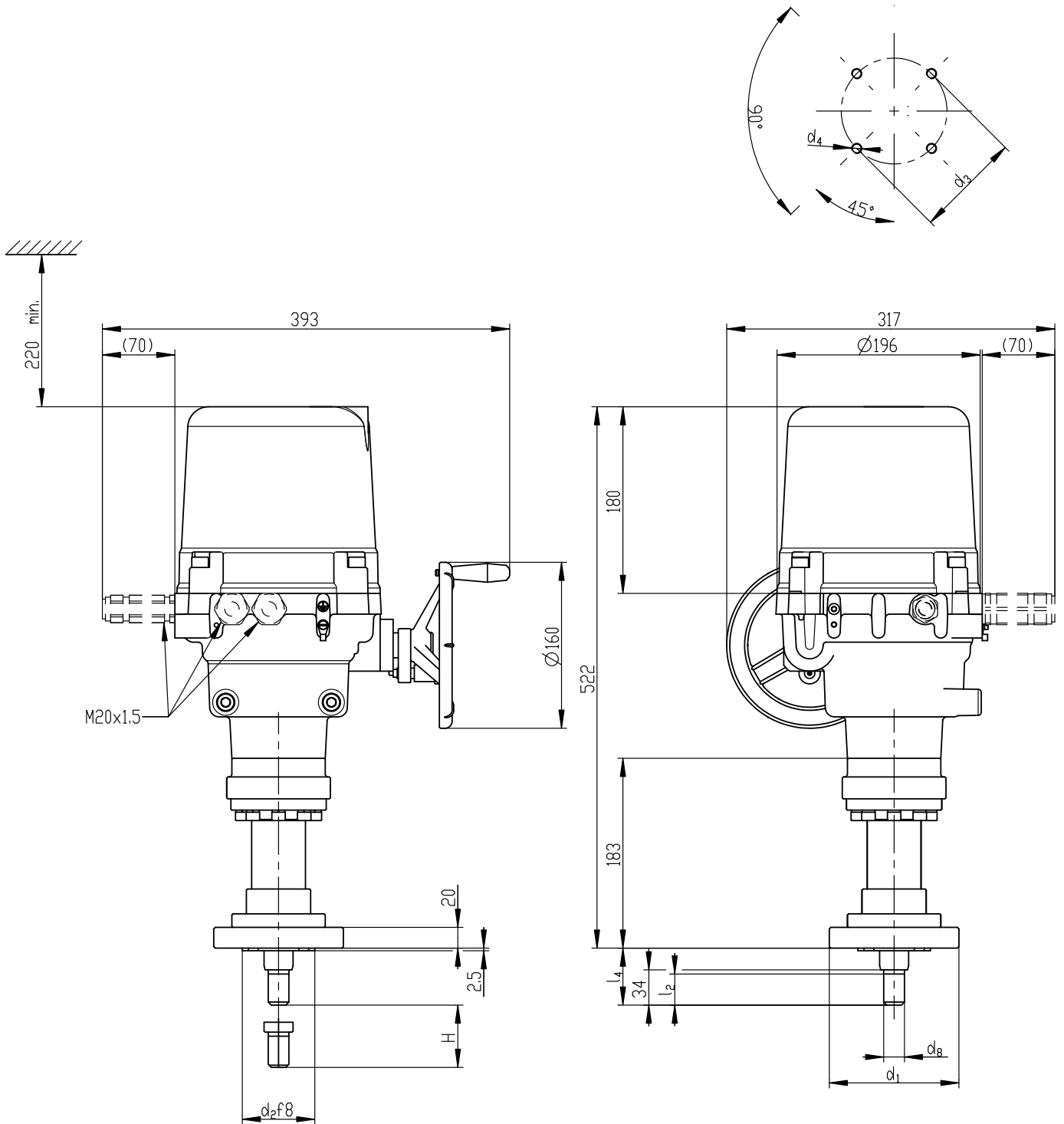


M8-6H
M10x1-28
M10x1.5-28
M12-28
M12x1,25
M12x1.5-6H
M14-28
M16x1.5-28
7/8"-9UN
Z

A - A



P - 2057

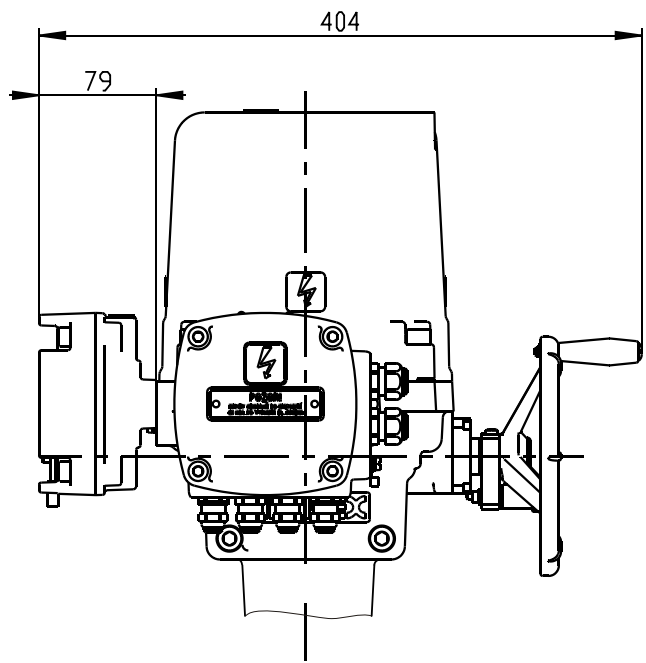
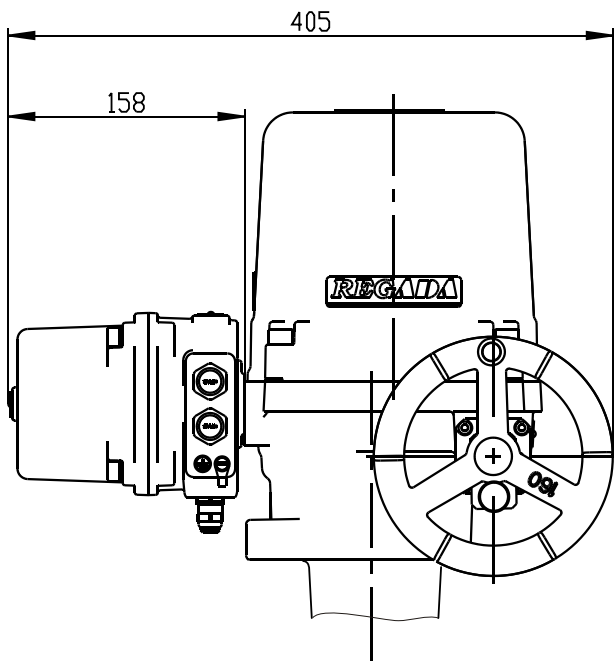


P-2055/A	F07	90	55	70	M8	25	50	M15x1,5	40
P-2055/B	F10	125	70	102	M10	30	55	M20x1,5	60
		d_1	d_2	d_3	d_4	l_2	l_4	d_8	H

P - 2055

ULR 1PA-Ex

„de“



P-2082