

II 2G Ex d IIC T5 Gb
 II 2G Ex de IIC T5 Gb ()
 II 2D Ex tb IIIC T100°C Db

ULR 2PA-Ex

REMATIC, DMS3,
 24 V DC (2P)
 (3P)
 PROFIBUS DP V0/V1 MODBUS RTU.
 : LED (RS-232).
 a a
 « - ».



DMS3

- 220 V AC
-
- T
-
- a 60 % 100 %
- ()
- ()
- 2 R1, R2 (18)
- READY
- - 0/4 - 20 mA, 4 - 12 mA, 12 - 20 mA 0/2 - 10 V
- 24 V DC - , ,
- 24 V DC - , ,
-
- ESD ()
- - 4 - 20 mA a ()
- 24 V DC, 40
- (, , .)
-
- LED
- RS 232
-
- ISO 5210
-
- IP 66 / IP 67
-
- RE3, RE4, RE5
- RE1, RE2, RE3, RE4, RE5, READY
- PROFIBUS DP V0/V1,
- MODBUS RTU,

ULR 2PA-Ex

547	x	-	x	x	x	x	x	/	x	x
-----	---	---	---	---	---	---	---	---	---	---

10)			e					
15150	3.1	60721-2-1	(R)+WDr, MWDr, EWDr	-25°C ÷ +55°C	C3	T5	IP 66/IP 67	1
					C4		2	
			(M)	-50°C ÷ +40°C	C3		IP 68 ¹¹⁾	5
	3 ()			-25°C ÷ +55°C	C3			3
	3 ()			-25°C ÷ +55°C	C3		IP 66/IP 67	6
	3 ()		(WW)	-50°C ÷ +40°C	C4			7

		23)			
	50 Hz	230 V AC	Z514, Z523, Z515	0	
		220 V AC	Z574c, Z563	L	
	60 Hz ²⁴⁾	120V AC	Z514, Z523, Z515	T	
		110V AC	Z574c, Z563	B	
	50 Hz	3x400 V AC	Z532b, Z536b, Z537b	2	
		3x380 V AC	Z574d, Z563a	N	
c	50 Hz	3x400 V AC	Z532f, Z536f, Z537f	E	
		3x380 V AC		F	

230 (220) V AC			3x400 (380) V AC						
31)	32)		31)	32)		33)	50 Hz	60 Hz	
	25 kN	15 kN		10 kN	25 kN				
20 kN	12 kN	8 kN	25 kN	15 kN	10 kN	25 mm/min	30 mm/min	B	
						40 mm/min	48 mm/min	C	
						60 mm/min	72 mm/min	D	
						80 mm/min	96 mm/min	E	
						100 mm/min	120 mm/min	F	
15 kN	9 kN	6 kN	25 kN	15 kN	10 kN	120 mm/min	144 mm/min	G	
						14 mm/min	17 mm/min	H	
						25 mm/min	30 mm/min	J	
						40 mm/min	48 mm/min	K	
						60 mm/min	72 mm/min	L	
12 kN	7 kN	5 kN	16 kN	10 kN	6,5 kN	80 mm/min	96 mm/min	M	
						100 mm/min	120 mm/min	N	
						120 mm/min	144 mm/min	P	

10	10 - 96	A
----	---------	---

		24 V DC					
DMS3	2P					Z515, Z537b Z537f	F
	3P/2P	0/4 - 20 mA		24 V DC	4 - 20 mA	Z514, Z532b Z532f	G
		0/2 - 10 V				Z523, Z536b Z536f	H
DMS3 M1	/ 2P	MODBUS RTU		24 V DC		Z574c, Z547d	M
DMS3 M2						Z563, Z563a	N
DMS3 P1		PROFIBUS DP V0 / V1				Z574c, Z547d	P
DMS3 P2						Z563, Z563a	R

ULR 2PA-Ex

547. x - x x x x x / x x

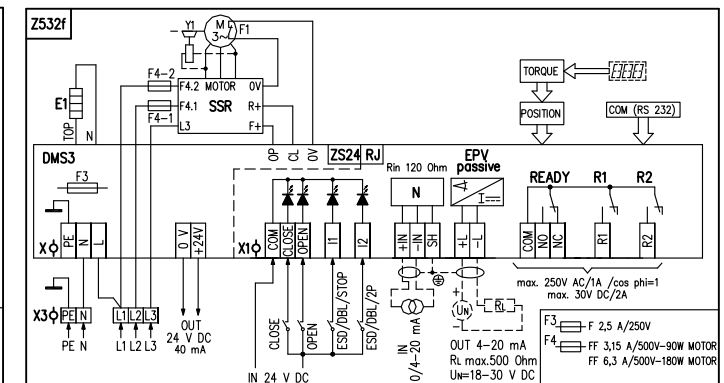
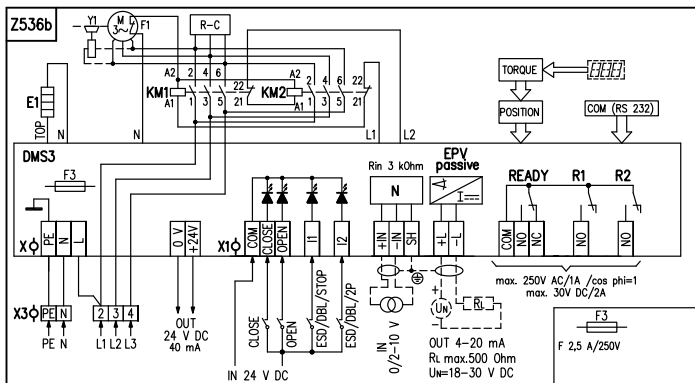
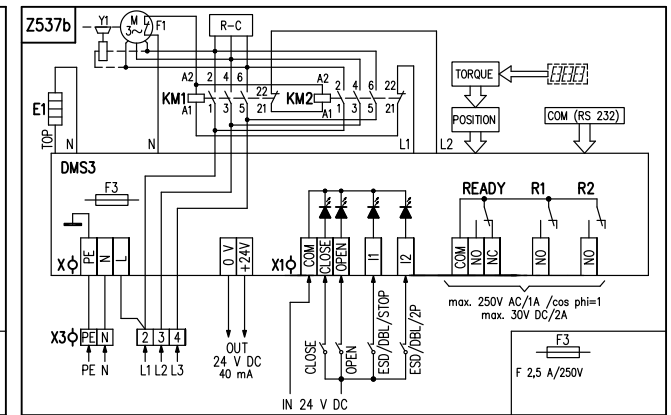
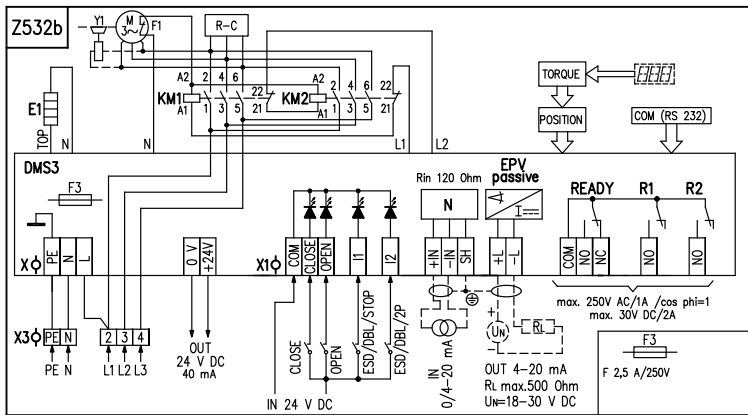
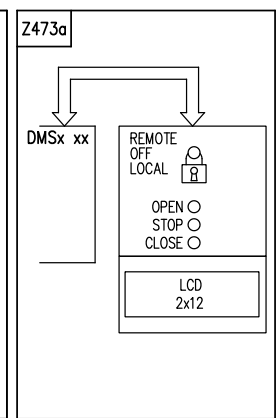
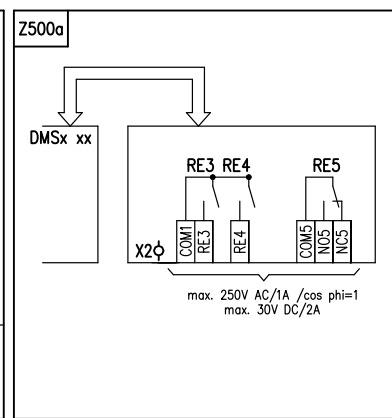
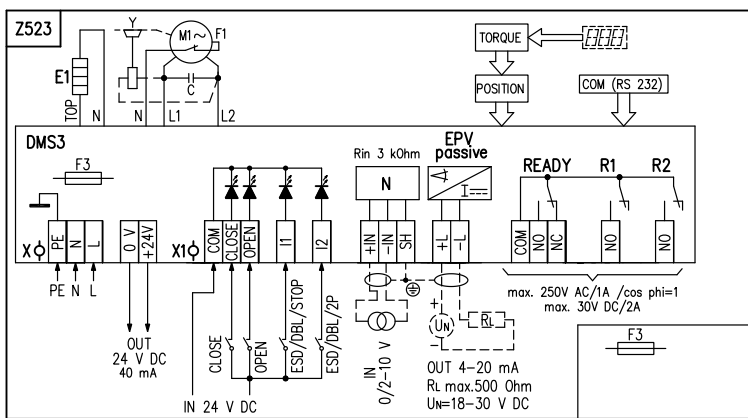
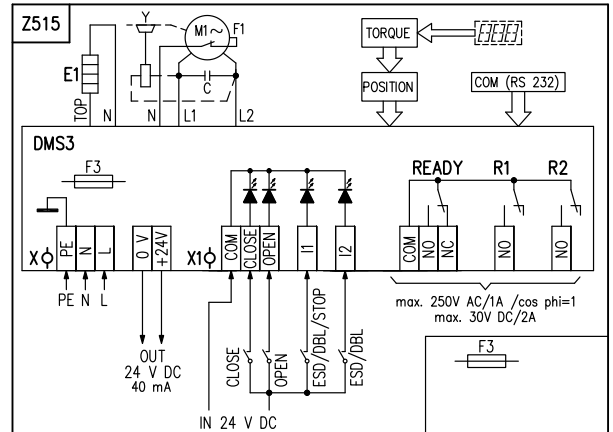
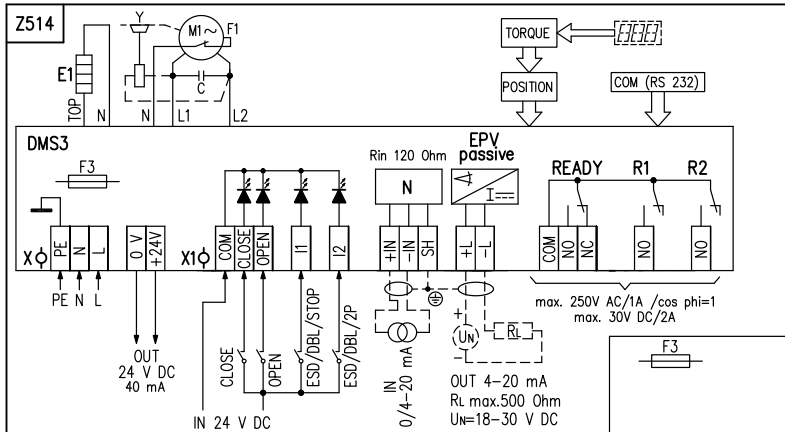
				⁶²⁾		↓
EN 15714-2	F07 (Y/55) ⁶¹⁾	40 mm	90 mm	M16x1.5-25		A
	F10 (Y/70) ⁶¹⁾	60 mm	115 mm	M20x1.5-25		B
	A	50 mm (80 mm)	110 / 100 / 65 H12	M20x1,5-34	P-2059/A	D
	B		112 / 100 / 80 H12		P-2059/B	E
	E		110 / 100 / 85 H12		P-2059/C	3
4	A		110 / 100 mm	M20x1,5-34		F
	B		112 / 100 mm			G
	A		92 mm	M14x2-34		J
	B		30 mm			K
	C		74 mm	M16X1,5-34		L
	D		126 mm			M
4	A		92 mm	UN 7/8" -9		N
	B	30 mm			P	
	C	74 mm			Q	
	D	126 mm			R	
					X	

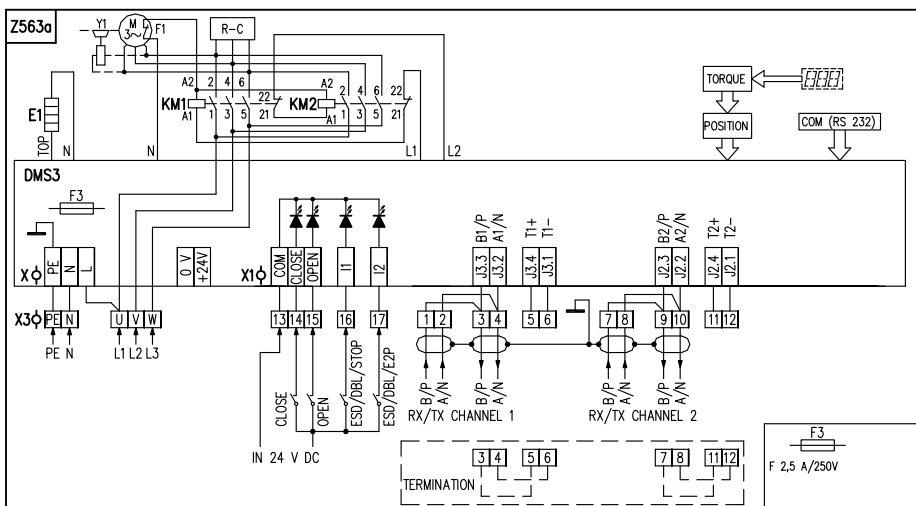
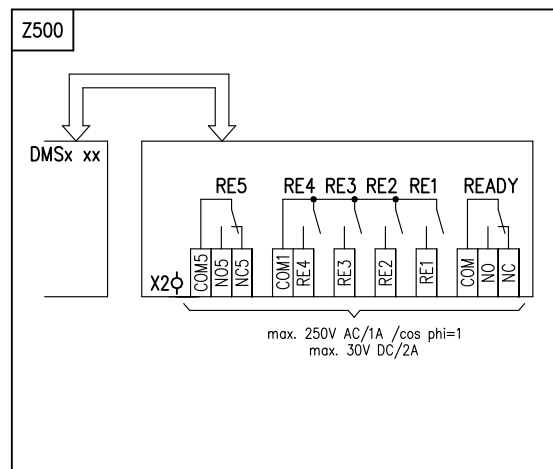
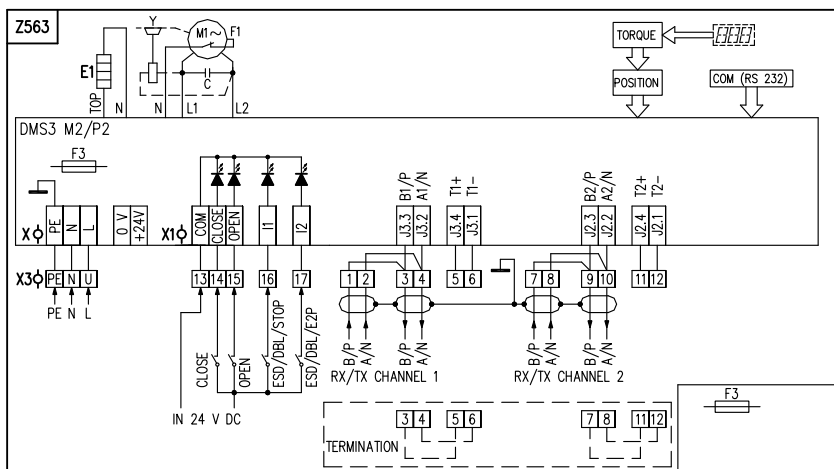
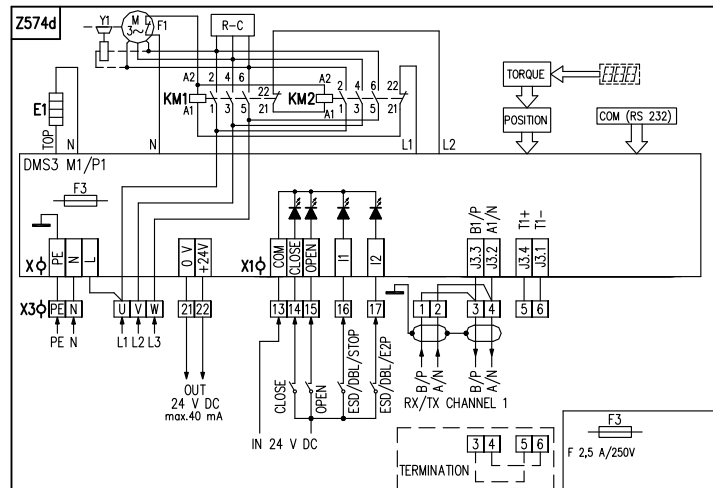
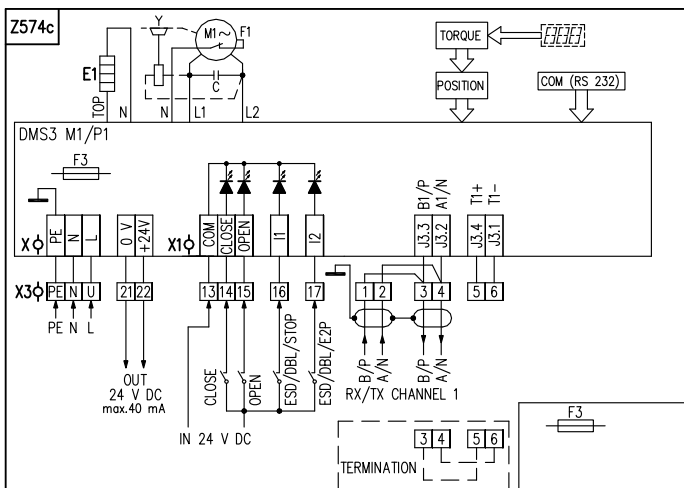
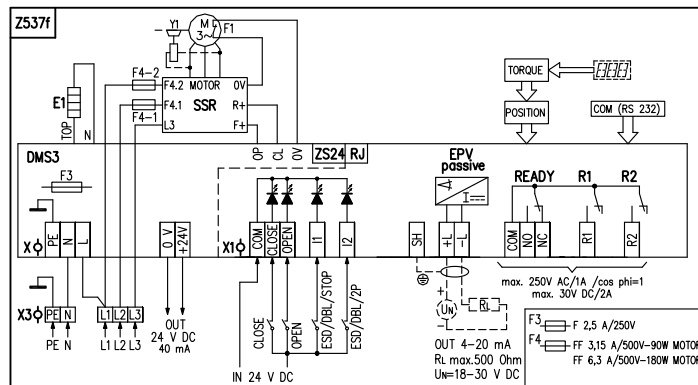
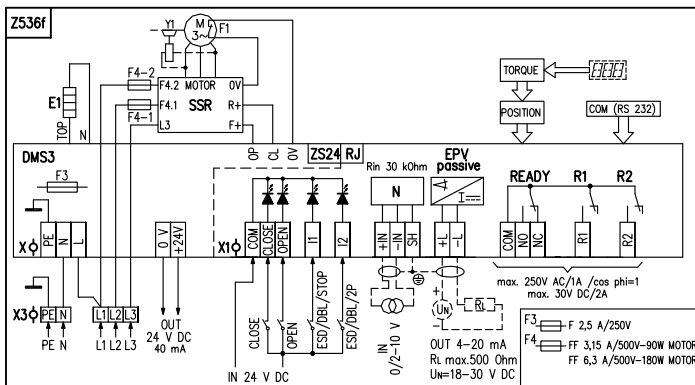
/			↓	↓
A			0	1
B			0	3
D	RE3, RE4, RE5 (DMS3 RE3) ⁷¹⁾	Z500a	0	5
E	RE1, RE2, RE3, RE4, RE5, READY (DMS3 RE6) ⁷¹⁾	Z500	0	6
F	LCD (-25°C)	Z473a	0	7
K	„e“ ⁷²⁾	-	1	1
: A+B=20, A+D=22, A+E=23, A+F=24, B+D=29, B+E=30, B+F=31, D+F=40, E+F=44, A+B+D=52, A+B+E=53, A+B+F=54, A+D+F=63, A+E+F=67, B+D+F=80, B+E+F=84, A+B+E+F=113, A+B+D+F=114				

DB-9F/RJ45 DMS3	224 A80 100
-----------------	-------------

10) :
 11) IP 68 - 10 / 48 » .2.
 23) " -
 24) " 60 , 60 100 % . 80 % .
 31) S2-10 min a S4-25% 90 / .
 32) S4-25% , 90 - 1200 / .
 33) 230/220 V AC 3x400/3x380 V AC.
 71) PROFIBUS MODBUS RTU.
 72) „d“ „e“ (Exd „de“ („e“).

ULR 2PA-Ex





32 2,5 d. " " 2

3

IECEx/ATEX

X -
 PE, U, V, W (0,05 - 2,5 mm²) (3x400/3x380 V AC, 50 Hz)
 0 V, +24 V2 (0,05 - 1 mm²) 24 V DC (100 mA)

X1 -
 COM, CLOSE OPEN, I1, I2 ... (0,05 - 1 mm²) 24 V DC
 +IN, -IN, SH (0,05 - 1 mm²) 0/4-20 mA
 +L, -L (0,05 - 1 mm²) () 4-20 mA
 COM, NO, NC (0,05 - 1,5 mm²) READY ()
 R1, R2 (0,05 - 1,5 mm²) R1, R2 ()
 COM, NO, NC (0,05 - 1,5 mm²) READY ()

X2 -
 COM1, RE1, RE2, RE3, RE4 ... (0,05 - 1,5 mm²) RE1 RE4 ()
 COM5, NO, NC (0,05 - 1,5 mm²) RE5 ()

X3 -
 L1, L2, L3svorky (0,05 - 1,5 mm²) napájacieho napätia 3x400 V AC, 50 Hz
 READY R1 R2
 R 1 R 2

Z473a ...
 Z500 6-
 Z500a ... 3-
 Z514 a 0/4 - 20 mA c
 4 - 20 mA a
 Z515 a
 Z523 a 0/2 - 10 V c
 4 - 20 mA a
 Z532b ... a 0/4 - 20 mA c
 4 - 20 mA a , a 0/4 - 20 mA c
 Z532f 4 - 20 mA a , c a 0/2 - 10 V c
 Z536b ... 4 - 20 mA a , a 0/2 - 10 V c
 Z537b ... a
 Z536f 4 - 20 mA a , c a 0/2 - 10 V c
 Z537f a
 Z563 e MODBUS/PROFIBUS -
 Z563a ... e MODBUS/PROFIBUS -
 Z574c ... e MODBUS/PROFIBUS -
 Z574d ... e MODBUS/PROFIBUS -

COM(RS232) PC
 DMS3
 EPV passive (EPV)
 E1
 F1
 F2
 F3 F6
 M
 N
 R
 POSITION
 Rin
 RL
 UN EPV
 R1
 R2
 READY ()
 RE1 o RE5
 TORQUE
 SSR (solid state)

X
 X1
 X2
 IN
 OUT

R1, R2, RE1, RE2, RE3, RE4, RE5:

READY: o

(EPV): 4 - 20 mA, 20 - 4 mA.
 (): 2P, 3P, 3P/2P I2.

(N): 4 - 20 mA, 20 - 4 mA, 0 - 20 mA, 20 - 0 mA, 4 - 12 mA, 12 - 4 mA, 12 - 20 mA, 20 - 12 mA;

: 2 - 10V, 10 - 2V, 0 - 10V, 10 - 0V

I1: ; ESD (Emergency shut down - 11

"); DBL (

I2: ; ESD (Emergency shut down - 12

"); DBL (

3P/2P I2

I2

); 2P (

24 V DC).

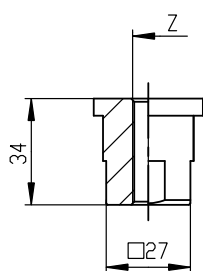
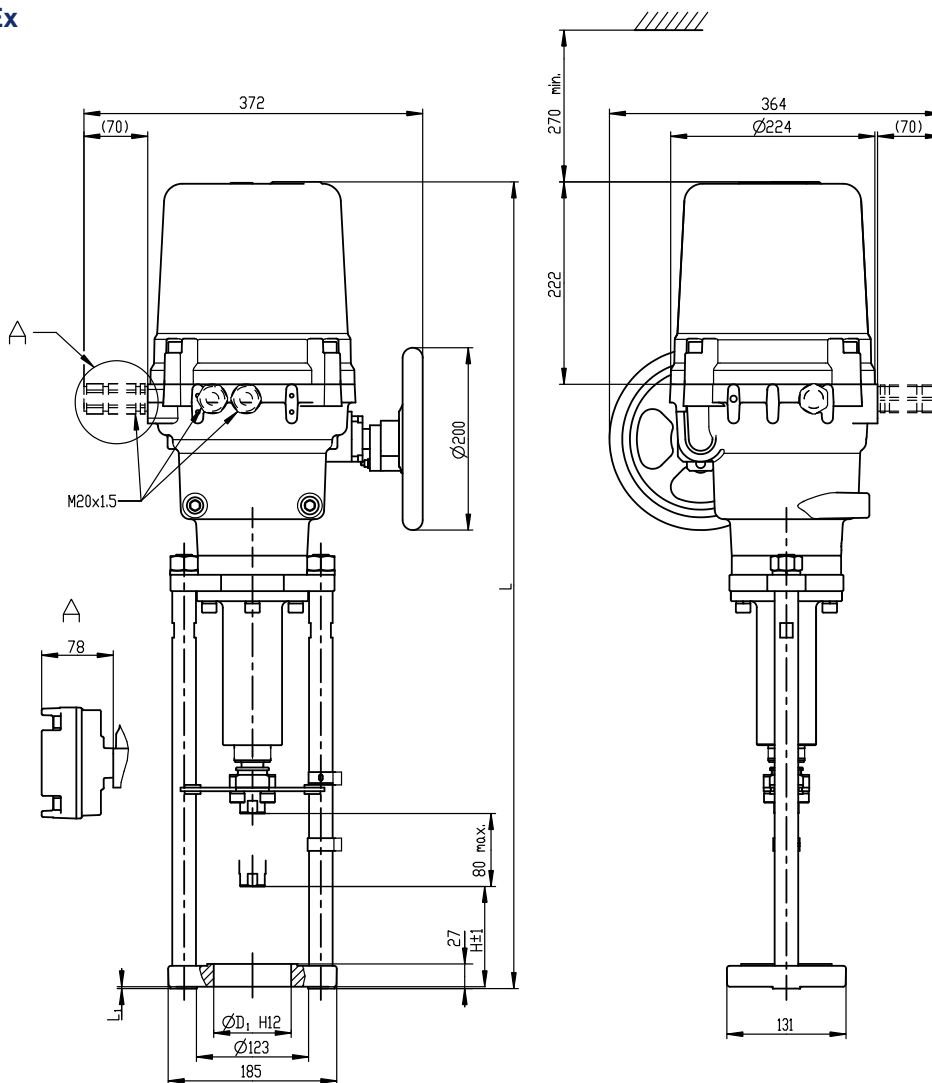
I1, I2
ESD

I2).

ESD

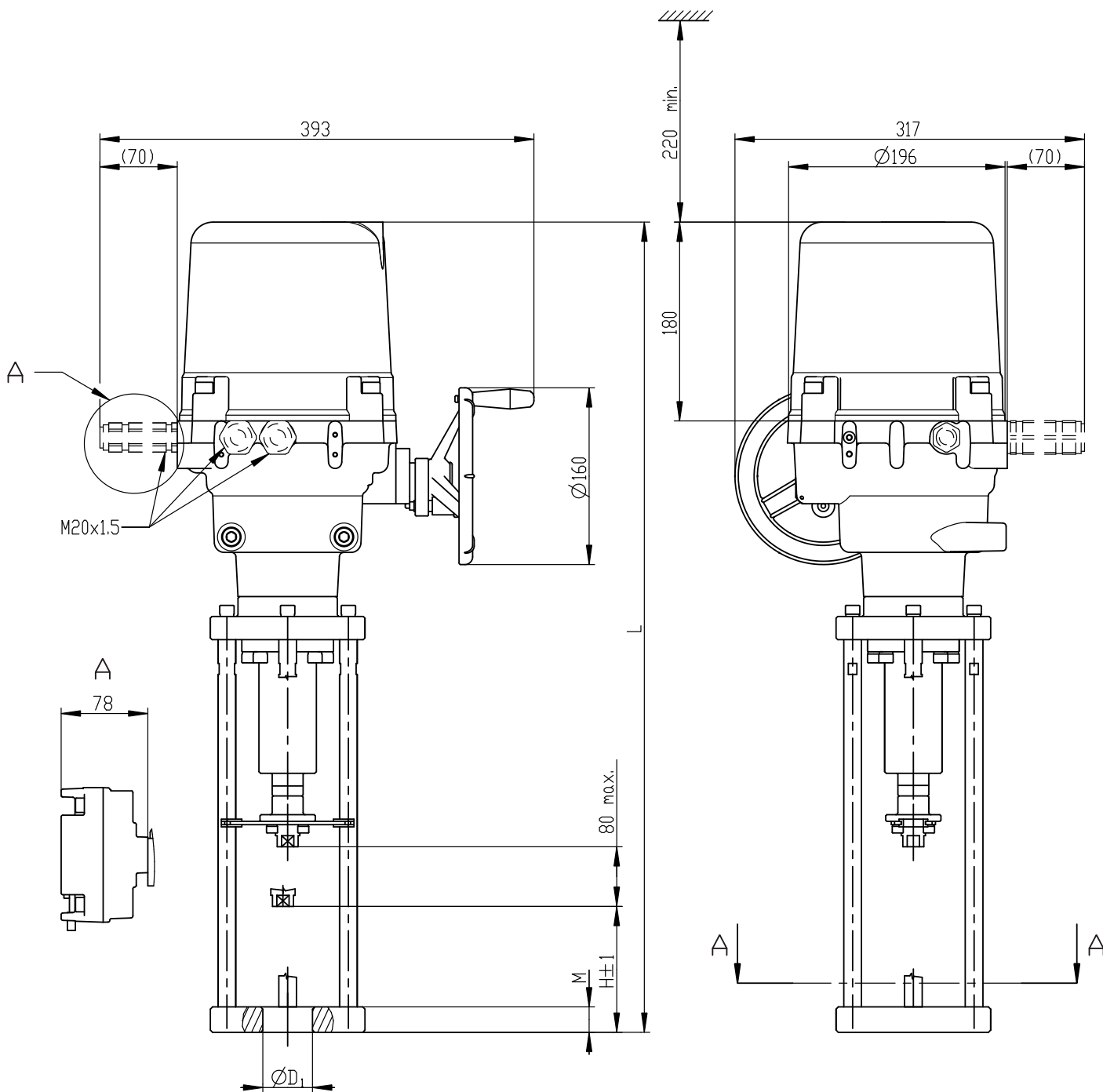
I1,

ULR 2PA-Ex

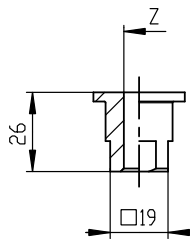


M18x1.5
M10
M12x1.25-6H
M20-6H
Ø8
M14x2
M16x2-6H
M14x1.5-6H
M20x1.5-6H
M16x1.5-6H
M10x1-6H
Z

P-2059/D	65	80	856	3
P-2059/C	85	110	885	2
P-2059/B	80	112	887	2
P-2059/A	65	110	886	3
	D ₁	H	L	L ₁

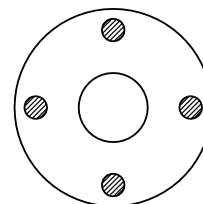


P-2057/A	45 H12	90	736	23	G
P-2057/B	45 H12	100	746	23	
P-2057/C	45 H12	75	721	17	
P-2057/D	45 H12	50	696	17	
P-2057/E	65.15 H7	85	731	23	D
P-2057/F	65.15 H7	110	756	30	
P-2057/G	57.15 H7	92	738	30	E
P-2057/H	57.15 H7	102	748	30	
	D ₁	H	L	M	



M8-6H
M10x1-28
M10x1.5-28
M12-28
M12x1,25
M12x1.5-6H
M14-28
M16x1.5-28
7/8"-9UN
Z

A - A



P - 2057