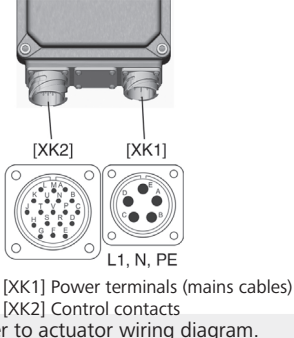


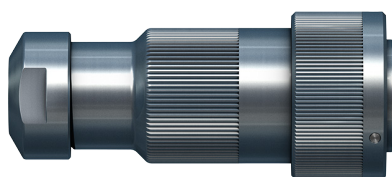
SGM/SVM, SG.2 / SV + MEC actuator type ranges

Parallel control

Technical data ITT Cannon connector

Canon ITT Connector complying with ROHS (A240)	Power connector (XK1)		Signal connector (XK2)	
	IN LINE	PG	IN LINE	PG
Connection voltage max. (actuator values)	500 V (230 V)		50 V (24 V)	
Number of contacts	5		19	
Contact version	Sockets		Sockets	
Wire connection to contacts	Crimping			
Material - contacts	Brass/gold			
Cable diameter	See table below			
Connections at actuator				
Connector lock nut	Bayonet			
Fitting dimensions of complete connector	Max. length: 92 mm		Max. length: 95 mm	

IN LINE	PG
---------	----



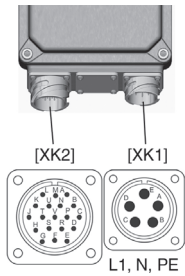
	SG.2 / SV + MEC reference number	Ø cable	Component	Contact	Ø wires	AUMA article number
Power connector	5	4.5 – 7.2mm	IN LINE (D07), IP69K	Socket, size 12, 031-8557-020 4 units, 031-8665-012 1 unit	0.75 – 1.5 mm ²	K012.107
	5	6.5 – 9.3mm	IN LINE (D09), IP69K		0.75 – 1.5 mm ²	K012.108
	5	8.0 – 10.3 mm	IN LINE (D11), IP69K		0.75 – 1.5 mm ²	K011.165
	5	9.0 – 12.5 mm	IN LINE (D13), IP69K		0.75 – 1.5 mm ²	K011.748
	5	13 – 18 mm	PG 21, IP67		up to 2.5 mm ²	K011.706
Signal connector	6	6.5 – 9.3 mm	IN LINE (D09), IP69K	Socket, size 16, 031-8556-115	0.75 – 1.5 mm ²	
	6	8.0 – 10.3 mm	IN LINE (D11), IP69K		0.75 – 1.5 mm ²	
	6	9.0 – 12.5 mm	IN LINE (D13), IP69K		0.75 – 1.5 mm ²	Z126.601
	6	11.5 – 14.2 mm	IN LINE (D14), IP69K		0.75 – 1.5 mm ²	Z126.602
	6	14.5 – 16.6 mm	IN LINE (D17), IP69K		0.75 – 1.5 mm ²	Z126.536
	6	13 – 18 mm	PG 21, IP67		0.75 – 1.5 mm ²	Z126.537
	6	18 – 25 mm	PG 29, IP67		0.75 – 1.5 mm ²	K011.707
Kit: 1 x power connector 1 x signal connector		D11: 8.0 – 10.3 mm D13: 9.0 – 12.5 mm	IN LINE, IP69K Power: D11 Signal: D13		0.75 – 1.5 mm ²	Z125.635

We reserve the right to alter data according to improvements made. Previous documents become invalid with the issue of this document.

SGM/SVM, SG.2 / SV + MEC actuator type ranges

Parallel control

Technical data ITT Cannon connector

Canon ITT connector (A66)	Power connector (XG1)	Control connector (XG2)
Connection voltage max. (actuator values)	500 V (230 V)	50 V (24 V)
Max. current (actuator values)	41 A (6 A)	22 A (1 A)
Number of contacts	5	19
Contact version	Sockets	Sockets
Wire connection to contacts	Crimping	
Material - contacts	Brass/gold	
Cable diameter	7 – 10.5 mm with rubber seal	18.5 mm ¹⁾
Connections at actuator	 <p>[XK1] Power terminals (mains cables) [XK2] Control contacts</p>	
Connector lock nut	Bayonet	
Fitting dimensions of complete connector	Max. diameter: 36.5 mm Max. length: • 67 mm (without screen) • 90 mm (with screen)	Max. diameter: 40 mm Max. length: 70 mm

Notes on table	
1) Cable diameter	No rubber seal included. For tight sealing, 18.5 mm have to be completely filled, either with the cable or with an additional coating.

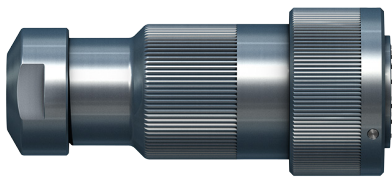


Connector type	Component	Ø wires	AUMA article number	Units
Power connector	Connector without screen incl. contacts, size 12	0.75 – 1.5 mm ²	Z113.088	compl.
Signal connector	Housing	0.75 – 1.5 mm ²	K007.340	1
	Contacts, size 16		K007.342	19
	Heat shrink sleeve		K006.954	1
Option	Housing	0.3 – 0.6 mm ²	K007.340	1
	Contacts, size 16		K005.147	19
	Heat shrink sleeve		K006.954	1

Technical data ITT Cannon connector

Canon ITT Connector complying with ROHS (A240)	Power connector (XG1)	Signal connector (XG2)
Type of cable sealing	IN LINE	IN LINE
Connection voltage max. (actuator values)		50 V (24 V)
Number of contacts	5	17
Contact version	Sockets / pins	Sockets / pins
Wire connection to contacts	Crimping	
Material - contacts	Gold/silver	
Cable diameter	See table below	
Connections incl. ref.no.		
	For individual pin assignment refer to actuator wiring diagram.	
Connector lock nut	Bayonet	
Fitting dimensions of complete connector	Max. length: 82 mm	Max. length: 92 mm

IN LINE	PG
---------	----








	Ref.no. SG.2 / SV + MEC	Ø cable	Component	Contact	Ø wires	AUMA article number
Power connector	2	6.5 – 9.3 mm	IN LINE (D09), IP69K	Socket, size 16S 031-8555-110	0.75 – 1.5 mm ²	Z131.357
	2	8.0 – 10.3 mm	IN LINE (D11), IP69K	Socket, size 16S 031-8555-110	0.75 – 1.5 mm ²	Z131.358
	2	9.0 – 12.5 mm	IN LINE (D13), IP69K	Socket, size 16S 031-8555-110	0.75 – 1.5 mm ²	Z131.359
	3	6.5 – 9.3 mm	IN LINE (D09), IP69K	Pin, size 16S 030-8586-000	0.75 – 1.5 mm ²	Z131.360
	3	8.0 – 10.3 mm	IN LINE (D11), IP69K	Pin, size 16S 030-8586-000	0.75 – 1.5 mm ²	Z131.361
	3	9.0 – 12.5 mm	IN LINE (D13), IP69K	Pin, size 16S 030-8586-000	0.75 – 1.5 mm ²	Z131.362
Signal connector	1	9.0 – 12.5 mm	IN LINE (D13), IP69K	Socket, size 16 031-8639-115	0.3 – 0.6 mm ²	Z131.363
	1	11.5 – 14.2 mm	IN LINE (D14), IP69K	Socket, size 16 031-8639-115	0.3 – 0.6 mm ²	Z131.364
	4	9.0 – 12.5 mm	IN LINE (D13), IP69K	Pin, size 16 330-8659-006	0.3 – 0.6 mm ²	Z131.365
	4	11.5 – 14.2 mm	IN LINE (D14), IP69K	Pin, size 16 330-8659-006	0.3 – 0.6 mm ²	Z131.366

SGM/SVM, SG.2 / SV + MEC actuator type ranges

Parallel control

Technical data ITT Cannon connector

Connecting cables and wires to the connector													
Operation instructions	Connecting the cable including crimping and inserting the pin contacts is described in the ITT Cannon operation instructions. Short instructions are included with the connectors. For more detailed descriptions, refer to the manufacturer.												
Special tools	The following special tools by ITT Cannon are required for crimping and inserting the pin contacts. These tools can either be ordered from the manufacturer or leased from AUMA.												
Crimping pliers (for signal and power connectors)	<div style="text-align: center;">  </div> <table border="1" style="width: 100%; margin-top: 10px;"> <tr> <td style="width: 30%;">Cannon ITT designation:</td> <td>M22520-1/01: Hand crimp tool for pins of sizes 10, 12, 16, 16S (0.75 – 6.0 mm²)</td> </tr> <tr> <td>AUMA article number:</td> <td>K009.855</td> </tr> </table> <div style="text-align: center; margin-top: 20px;">  </div> <table border="1" style="width: 100%; margin-top: 10px;"> <tr> <td style="width: 30%;">Cannon ITT designation:</td> <td>TH 452: Turret head for hand crimp tool. Pins of sizes (12, 15, 15S, 16, 16S)</td> </tr> <tr> <td>AUMA article number:</td> <td>K009.856</td> </tr> </table> <div style="text-align: center; margin-top: 20px;">  </div> <table border="1" style="width: 100%; margin-top: 10px;"> <tr> <td style="width: 30%;">Cannon ITT designation:</td> <td>CCT-CGF-E: Hand crimp tool for size 12 pins used in power connector (0.75 – 6.0 mm²)</td> </tr> <tr> <td>AUMA article number:</td> <td>K009.876</td> </tr> </table>	Cannon ITT designation:	M22520-1/01: Hand crimp tool for pins of sizes 10, 12, 16, 16S (0.75 – 6.0 mm ²)	AUMA article number:	K009.855	Cannon ITT designation:	TH 452: Turret head for hand crimp tool. Pins of sizes (12, 15, 15S, 16, 16S)	AUMA article number:	K009.856	Cannon ITT designation:	CCT-CGF-E: Hand crimp tool for size 12 pins used in power connector (0.75 – 6.0 mm ²)	AUMA article number:	K009.876
Cannon ITT designation:	M22520-1/01: Hand crimp tool for pins of sizes 10, 12, 16, 16S (0.75 – 6.0 mm ²)												
AUMA article number:	K009.855												
Cannon ITT designation:	TH 452: Turret head for hand crimp tool. Pins of sizes (12, 15, 15S, 16, 16S)												
AUMA article number:	K009.856												
Cannon ITT designation:	CCT-CGF-E: Hand crimp tool for size 12 pins used in power connector (0.75 – 6.0 mm ²)												
AUMA article number:	K009.876												
Insertion tool for pin contacts (for signal and power connectors)	<div style="text-align: center;">  </div> <table border="1" style="width: 100%; margin-top: 10px;"> <tr> <td style="width: 30%;">Cannon ITT designation:</td> <td>CIT-F80-12: Insertion tool for inserting size 12 pin contacts</td> </tr> <tr> <td>AUMA article number:</td> <td>K009.877</td> </tr> </table> <div style="text-align: center; margin-top: 20px;">  </div> <table border="1" style="width: 100%; margin-top: 10px;"> <tr> <td style="width: 30%;">Cannon ITT designation:</td> <td>226-1018-000: Guide pin for insertion of size 12 pins into holes in plastic insert</td> </tr> <tr> <td>AUMA article number:</td> <td>K009.879</td> </tr> </table>	Cannon ITT designation:	CIT-F80-12: Insertion tool for inserting size 12 pin contacts	AUMA article number:	K009.877	Cannon ITT designation:	226-1018-000: Guide pin for insertion of size 12 pins into holes in plastic insert	AUMA article number:	K009.879				
Cannon ITT designation:	CIT-F80-12: Insertion tool for inserting size 12 pin contacts												
AUMA article number:	K009.877												
Cannon ITT designation:	226-1018-000: Guide pin for insertion of size 12 pins into holes in plastic insert												
AUMA article number:	K009.879												

SGM/SVM, SG.2 / SV + MEC actuator type ranges

Parallel control

Technical data ITT Cannon connector

Ejection tool for pin contacts
(for signal and power connectors)



Cannon ITT designation:	CET-F80-12: Extraction tool for size 12 pins
AUMA article number:	K009.878

Accessories

Angle adapters

Use	AUMA article number	Surface
For signal connectors	Z101.862	A66
	Z127.404	A240 (ROHS compliant)
For power connectors	Z105.626	A66
	Z127.405	A240 (ROHS compliant)



Z101.862-0

Z101.626-0

Angle adapters can be used to deflect cable-connector arrangement by 70° from the output drive or the valve.

Retrofit kit for 90° angle at the actuator for actuators with parallel control: Z105.760.