

SIMRAD®

Go With Confidence



MARINE ELECTRONICS FOR
POWERBOATS AND SPORTFISHING



MARINE ELECTRONICS FOR POWERBOATS AND SPORTFISHING

At Simrad we have saltwater running through our veins. For 70 years we've been innovating on the seas, from pioneering work in marine radio and autopilot to revolutionary advances in radar. From plug and play simplicity to custom solutions

for mega yachts, we deliver everything boaters need for the on-water activities they love. Innovative solutions enable powerboating and sportfishing enthusiasts to travel safer, journey further, and tackle the most elusive offshore game.

COVER PHOTO BY JASON STEMPEL (WWW.JASONSTEMPEL.COM)



SIMRAD®

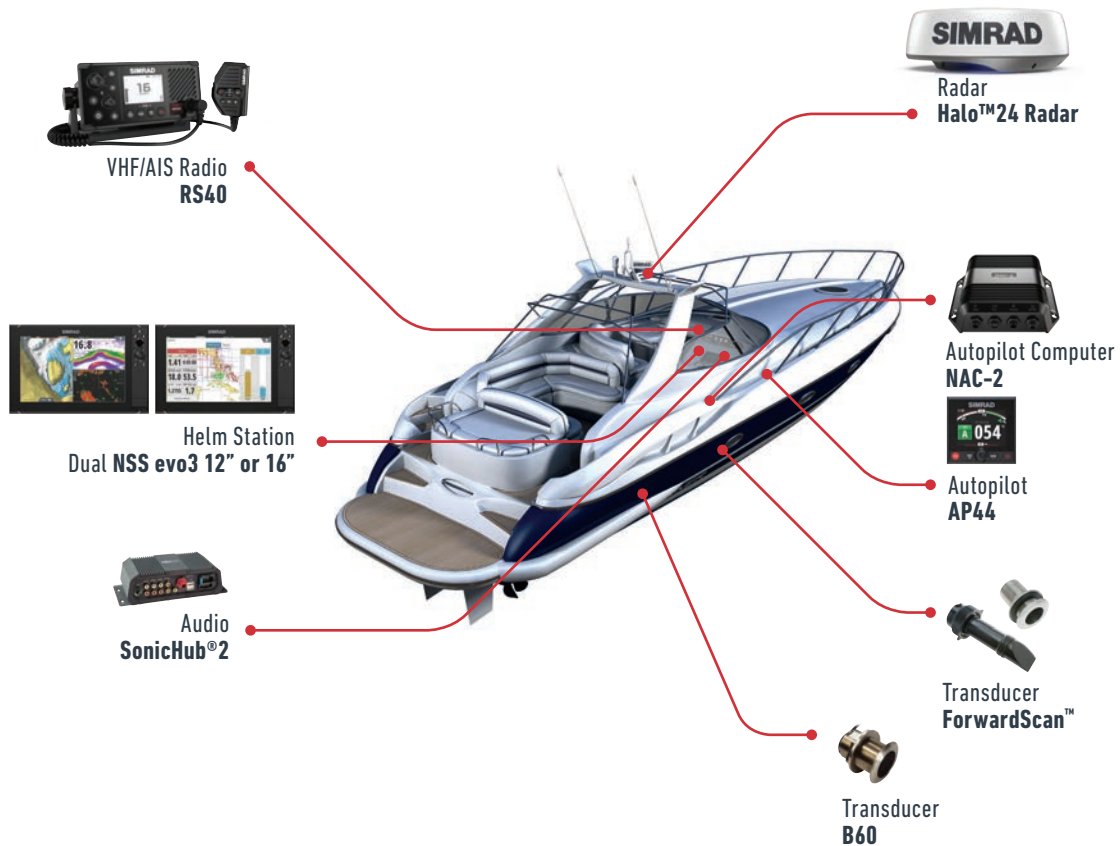
Go With Confidence

POWERBOAT SYSTEMS

Small & Medium Powerboats

Single station powerboats

26-50FT



SIMRAD POWERBOAT SYSTEMS

Simrad NSS evo3 displays and Glass Bridge systems place you in complete control of your cruising experience. Navigate confidently and safely with intuitive multi-touch controls, automatic routing, ForwardScan™ sonar, and a range of

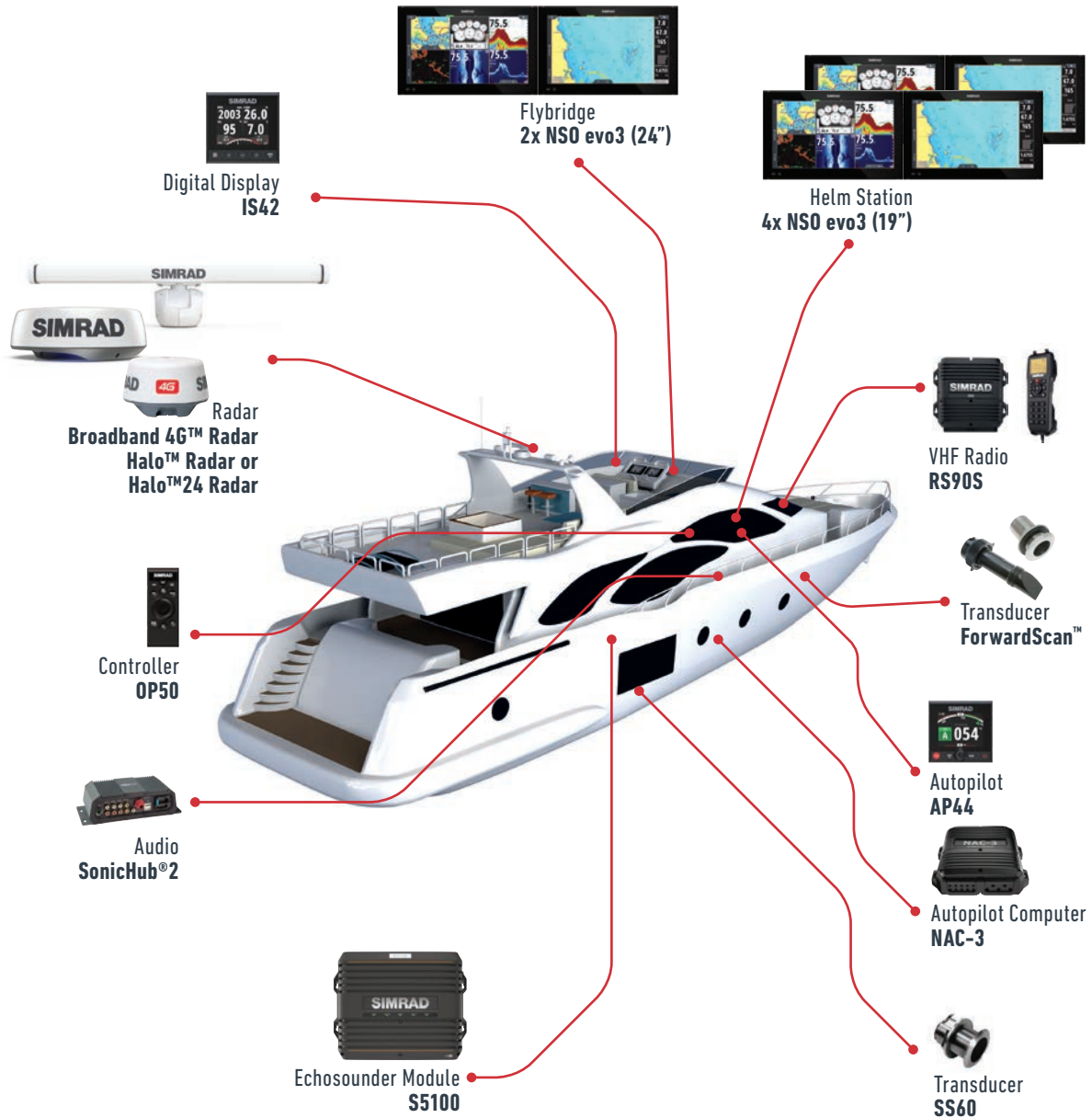
innovative radar solutions. Autopilot frees your hands from the wheel, while you cruise to your own soundtrack with the fully integrated SonicHub®2 entertainment system.

POWERBOAT SYSTEMS

Motor Yachts

Large dual station motoryachts

50-100FT



SPORTFISHING SYSTEMS

Centre Console

Single station sportfishers

20-40FT



SIMRAD SPORTFISHING SYSTEMS

Customizable Simrad technology lets you create the perfect sportfishing system. Whether you're drifting over deep-sea spots or trawling for big game, there's a sonar solution that will help you see more and target better. The bird finding feature on our

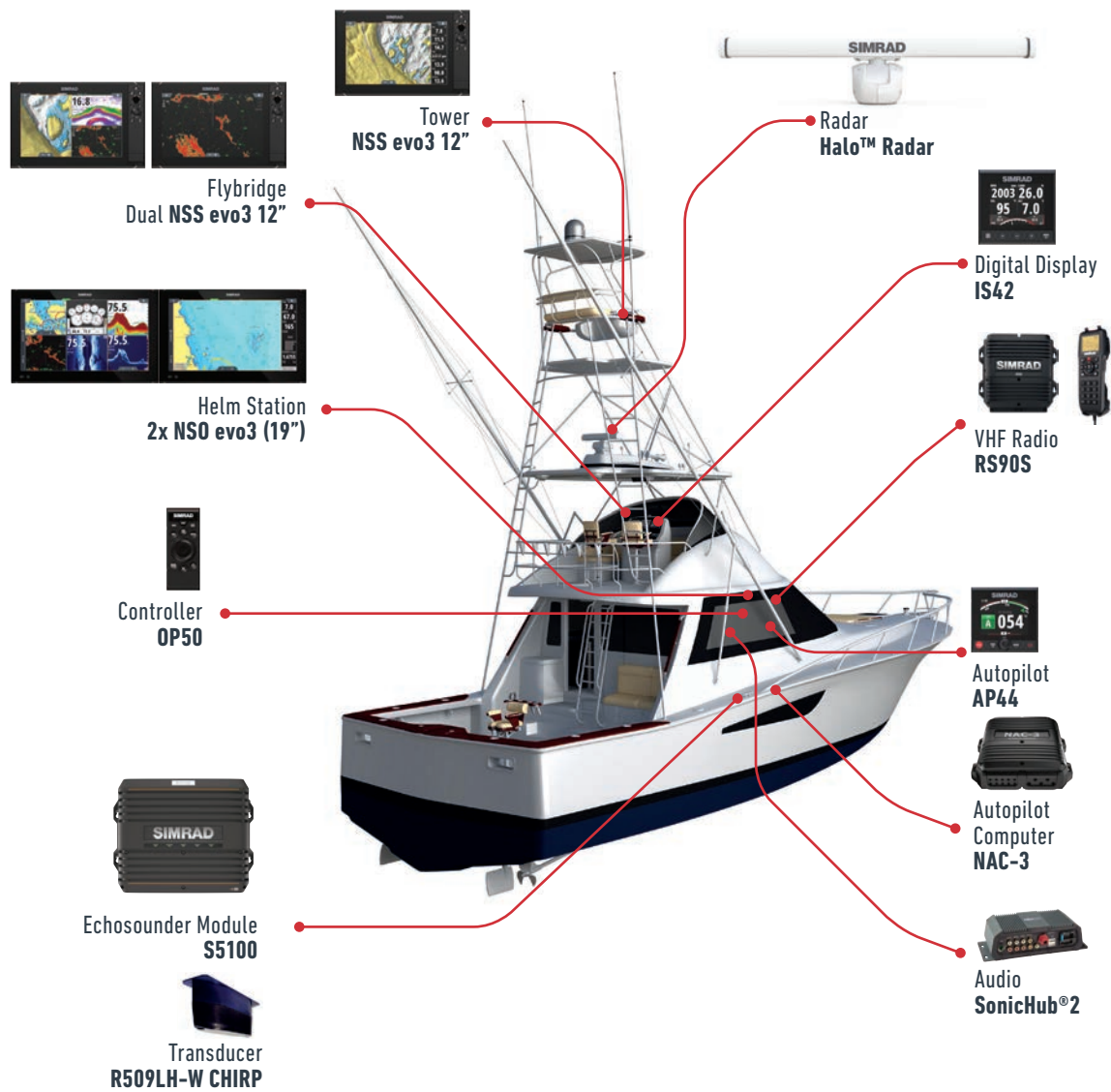
Halo radars and our crystal-clear displays will give you everything you need to find fish. All built tough and designed for ease of use with wet or gloved hands.

SPORTFISHING SYSTEMS

Large Flybridge

Large dual station motoryachts

40-70+ FT

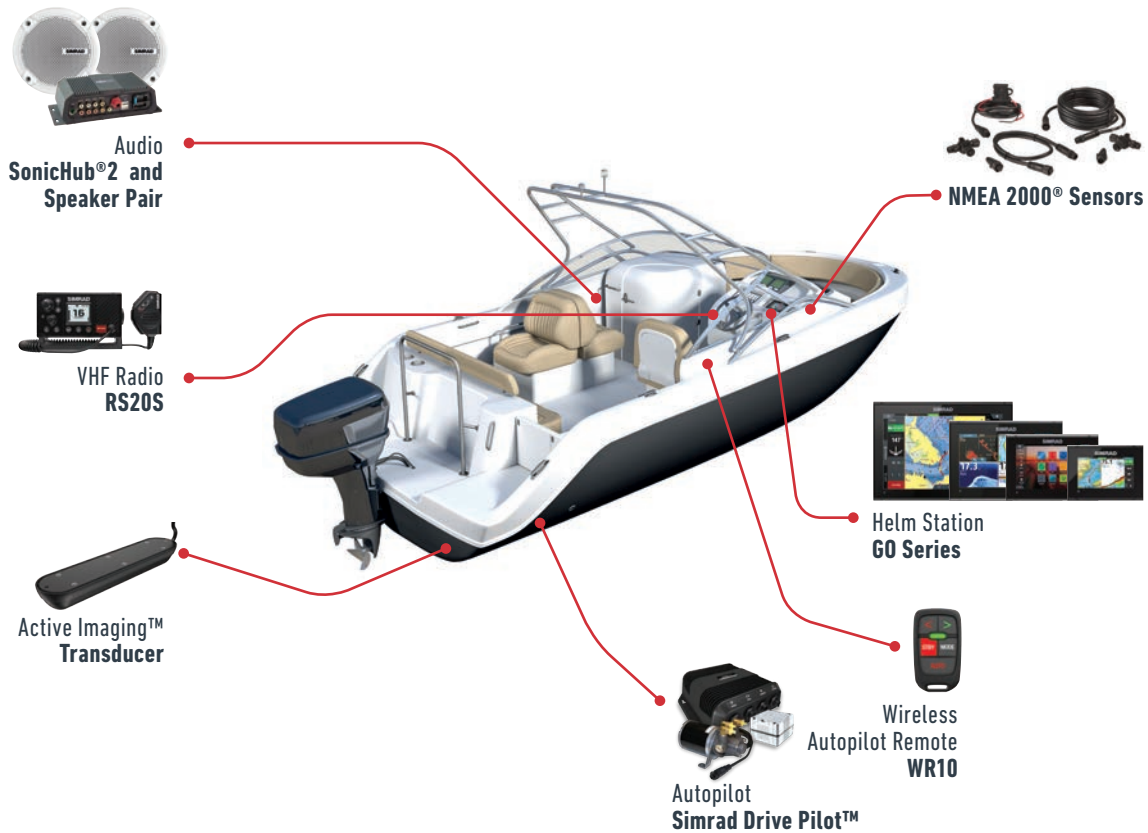


RUNABOUT SYSTEMS

Small Runabouts, Bow Riders or Bay Boats

Single station powerboats

UP TO **26FT**



SIMRAD RUNABOUT SYSTEMS

Our award-winning Simrad GO chartplotter navigation displays are a perfect fit for runabouts of all types. These displays pair comprehensive navigation tools with a wide range of built-in cruising and fish finding sonar technology. With

industry-standard connectivity, including support for compact and low-power Simrad radar systems, it's easy to integrate and accessorise to suit your needs.



GLASS BRIDGE NAVIGATION SYSTEMS

NSO EVO3

Complete your ultimate boat with the NSO evo3 navigation system.



Our flagship NSO evo3 delivers the ultimate view with an ultra-bright display, available in 16, 19, or 24-inch widescreen sizes. Wide viewing angles keep the screen in view from anywhere in sight, while Full HD resolution lets you see more than ever with up to six panels displayed simultaneously in a split-screen layout.

Every NSO evo3 display features an integrated quad-core processor for ultimately smooth response, from charting to Active Imaging™ Sonar. Enjoy swift access to the information you need, as you need it, whether you're cruising the open ocean or carefully navigating a crowded harbour.

GLASS BRIDGE NAVIGATION SYSTEMS

NSO EVO3 MAIN FEATURES

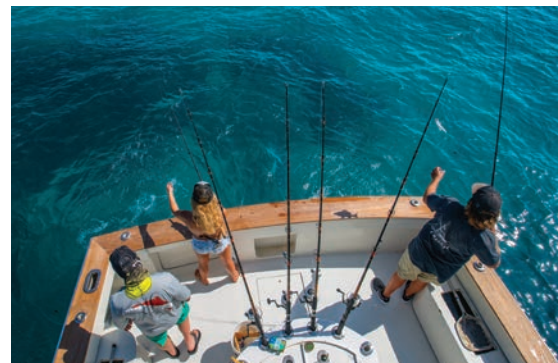
- Ultra-bright, Full HD 16, 19, or 24-inch display
- Easy touchscreen control of your entire Simrad system
- 1200-nit high-brightness, sunlight-viewable screen
- Integrated quad-core processor for ultimate performance
- Low-profile glass helm styling
- See more than ever with six-panel split screen option
- Connect with smartphones, tablets, and Internet hotspots
- Widescreen full HD monitor support
- Integrates with the full range of Simrad radar solutions, S5100 sonar module, SonarHub with StructureScan® HD imaging, ForwardScan® sonar, and much more
- OP50 keypad & rotary controller option
- Works with C-MAP Easy Routing™ and Navionics Dock-to-dock Autorouting™*



Pinch-to-zoom
with Multi-touch



Simrad NSO evo3 are available in 3 sizes:
16-inch, 19-inch, and 24-inch



*Subscription maybe required. Please visit navionics.com for details.



GLASS BRIDGE NAVIGATION SYSTEMS

NSS EVO3

The Simrad NSS evo3 breakthrough touchscreen and keypad control.



Navigate, take control, and enjoy an unprecedented level of built-in functionality with the easy to use NSS evo3. New SolarMAX™ HD display technology offers exceptional clarity and ultra-wide viewing angles, combined with an all-weather touchscreen and expanded keypad for total control in all conditions. Find your way with an integrated

high-speed GPS antenna and a wide range of cartography options to suit any locale. Cruise confidently with ForwardScan sonar, or fish easier with StructureScan® HD imaging and Broadband Sounder™ technology. Built-in Wi-Fi enables access to online services, and delivers smartphone and tablet integration to extend your display's reach well beyond the helm.

GLASS BRIDGE NAVIGATION SYSTEMS



NSS EVO3 MAIN FEATURES

Widescreen SolarMax™ HD display

Reliable control in all conditions: switch seamlessly between multi-touch and a full keypad with rotary dial

Advanced Fishfinding capability built-in supporting dual channel CHIRP transducers.

Add StructureScan® 3D imaging, advanced Broadband Sounder™ capabilities and more via Simrad modules

Expand your view with Halo™ Pulse Compression radar, Broadband 3G™/4G™, and other Simrad radar solutions

Take complete control of Simrad autopilot systems with the NSS evo3 touchscreen or keypad

NMEA 2000® connectivity enables integrated engine monitoring, sound system control, and much more

Navigate accurately with an embedded high-gain 10 Hz GPS/GLONASS receiver

Enjoy easier trip planning with TripIntel™ technology and support for Navionics® Dock-to-dock Autorouting + C-MAP® Easy Routing

Built-in Wi-Fi enables online features and smartphone monitoring and tablet control

Choose flush-mount installation for a low-profile Glass Bridge look, or bracket-mount to install almost anywhere

SOLARMAX™ HD

SOLARMAX™ HD DISPLAYS

Features ultra-bright LED backlighting and advanced anti-reflective coatings to maximise visibility under any lighting conditions. Enjoy a clear view from almost any angle, even if you're wearing polarised sunglasses. Superior colour accuracy, high-resolution, wide operating temperature range, condensation-free design, and protective coatings all add to a quality display that's able to deliver the best views while withstanding the most rugged of marine conditions.



Pinch-to-zoom
with Multi-touch



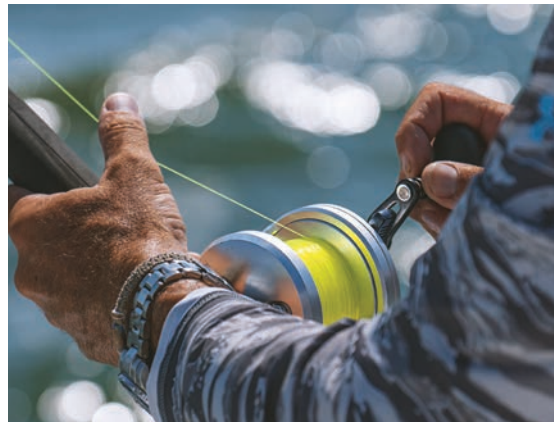
Simrad NSS evo3 multifunction displays are available in four screen sizes: 7-inch, 9-inch, 12-inch and 16-inch.

*Subscription maybe required. Please visit navionics.com for details.

NAVIGATION DISPLAYS

GO Series

The Simrad GO series, a perfect fit for compact sportboats and dayboats.



The Simrad GO chartplotter navigation display is a perfect way to expand the capabilities of sportboats, cruisers, and smaller center consoles. Behind a super-bright display with easy to use touch interface lies a chartplotter with built-in GPS receiver and wireless access to the latest charts and updates.

Control your onboard sound system, and choose from an array of built-in sonar technologies: cruise with confidence using ForwardScan™ forward-looking sonar, or find fish like a pro with Broadband Sounder™ CHIRP sonar plus Active Imaging™ Sonar.

NAVIGATION DISPLAYS



MAIN FEATURES

Easy to use multi-touch interface	High-speed 10 Hz GPS receiver
Full-featured chartplotter with the widest available cartography support	Built-in Broadband Sounder™, CHIRP sonar, Active imaging™ or ForwardScan™ sonar support (transducer required)
Plan smarter with TriplIntel™ technology	Built-in wireless connectivity
Support for Navionics® Dock-to-Dock Autorouting and C-MAP® Easy Routing	NMEA 2000® compatible
Flush or bracket mount display	Radar display for Simrad Broadband 3G™/4G™, Halo™24 and Halo™ radar (Excludes G05).
Widescreen with bright LED backlight	Dual microSD card slots (G09 and G012 only)

EXPAND YOUR VIEW WITH RADAR

The Simrad new G07, G09 and G012 are all full-featured radar displays with plug-and-play connectivity to Simrad Broadband 3G™, Broadband 4G™, Halo™24, and Halo™ radar.

Cruise confidently through crowded harbours, navigate safely in poor visibility, keep an eye on distant weather cells, and find flocks of feeding birds that hint at good fishing spots.

Automatic tuning helps to provide a clear radar picture in any conditions, while radar overlay combines radar data with navigational charts for an easy-to-interpret view of your surroundings.



Pinch-to-zoom with Multi-touch



*Subscription maybe required. Please visit navionics.com for details.

Simrad G0 series multifunction displays are available in 4 sizes: 5-inch, 7-inch, 9-inch and 12-inch.

RADAR

Halo™ Radar

The revolutionary Simrad Halo™ radar makes it easier than ever to navigate safely, keep an eye on the weather, and find flocks of birds that mark the best waters to fish.



	SHORT 0 — 0.1 KM (0 — 600 ft)	SHORT-MEDIUM 0.1KM — 2 KM (600 ft — 1 NM)	MEDIUM 2-20 KM (1 — 11 NM)	MEDIUM-LONG 20 — 88 KM (11 — 48 NM)	LONG >100 KM (>64 NM)
6kW PULSE	[Progressive bar from left to right]				
HALO24	[Red bar from left to right]				
HALO	[Blue bar from left to right]				

MAIN FEATURES

Up to 72NM working range

Beam Sharpening with Target Separation Control

Dual range operation

Advanced signal processing with Custom, Harbour, Offshore, Weather, and BIRD modes

High-speed 48RPM operation

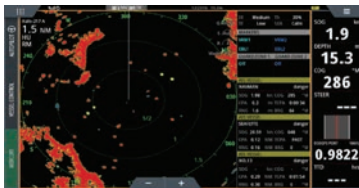
InstantOn™, ready in 16-25 seconds from power-on, instant from standby

MARPA target tracking, up to 10 targets (20 with dual range)

Low electromagnetic emissions and radiation

Low power consumption with 12/24V operation

VelocityTrack™ Doppler - Motion Tracking



VelocityTrack™ enables easy identification of approaching obstacles, helping you to avoid dangerous and costly on-water collisions. Targets are highlighted, delivering information about the motion of targets from the very first radar sweep.



See closer than 90 metres (300 feet) on one side of the screen, and as far as 64 nautical miles on the other. Halo™ Radar truly functions as two independent radar systems in one, with no performance compromises at either selected range.



For offshore sportfishing enthusiasts and commercial fishers, birds mean fish. Halo™ Radar's dedicated BIRD mode makes it easy to locate feeding flocks from miles away, without introducing the distraction of high-gain screen clutter.

HALO™ RADAR

The revolutionary Simrad Halo™ radar makes it easier than ever to navigate safely, keep an eye on the weather, and find

flocks of birds that mark the best waters to fish. Solid-state Pulse Compression technology lets you see both near and far at the same time, on a single screen, from a single Halo™ radar array.

RADAR

Halo™24 Radar

The Ultimate View for Collision Avoidance.



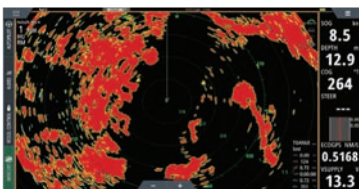
MAIN FEATURES

- 48 nm range from a compact 24-inch dome
- Advanced pulse compression technology with beam sharpening
- Simultaneous Dual Range operation sees both near and far
- Ultra-fast 60 RPM operation at ranges up to 1.5 nm
- VelocityTrack™ Doppler technology for collision avoidance

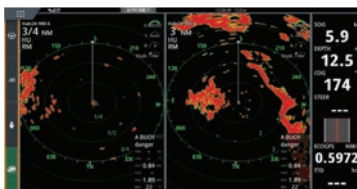
HALO24

Halo24 revolutionizes radar by offering an almost real-time view, with industry-first 60 RPM operation at close range for the ultimate in collision avoidance.

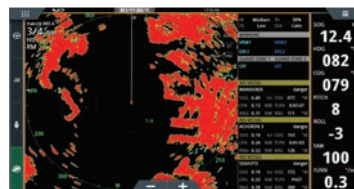
Identify hazards in an instant with VelocityTrack™ Doppler technology, and enjoy simultaneous short and long-range coverage up to 48 nautical miles—from one compact 24-inch dome antenna.



Combining VelocityTrack™ with Halo's Superior Azimuth & Range Resolution.



No trade off in target detection when using dual range, which helps maintain situational awareness.



A faster rotation speed allows a faster refresh of targets in the PPI (radar screen).

Broadband Radar™

Enjoy a crystal clear image, right up to the bow, with our incredible Broadband Radar.



BROADBAND 3G™/4G™ RADAR FEATURES

- Crystal clear image and Automatic clarity
- MARPA target tracking and Low power consumption
- Dual guard zones and InstantOn™ startup
- Extremely low emissions and Quick installation

BROADBAND 4G™ RADAR ONLY FEATURES

- Up to 36NM working range
- Beam Sharpening and Dual Range
- High speed mode (48RPM)
- Advanced target detection

DEDICATED DISPLAYS

R2009 / R3016

The Simrad R2009 and R3016 are dedicated radar control units, compatible with a range of Simrad radar solutions including Halo™ Pulse Compression, Broadband 3G™/4G™, and HD Digital Radar.



R3016

R2009

R2009 & R3016 are compatible with Simrad Halo™ Pulse Compression, Broadband 3G™/4G™, Halo™24 and HD Digital Radar systems



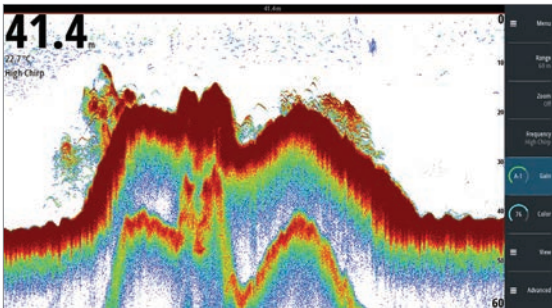
MAIN FEATURES

- Dedicated radar control unit and Automatic tuning system
- Anti-sea-clutter technology for an optimum picture under adverse weather conditions
- MARPA target tracking
- Keypad and rotary-dial interface with 8 direct-access menu keys
- HDMI output for an optional secondary display or remotely-operated 'clone' station (R3016 only)
- Bracket and flush-mount installation options
- Ethernet, NMEA 0183 & NMEA 2000 connectivity
- 9-inch portrait display (R2009) or 16-inch HD widescreen display (R3016)

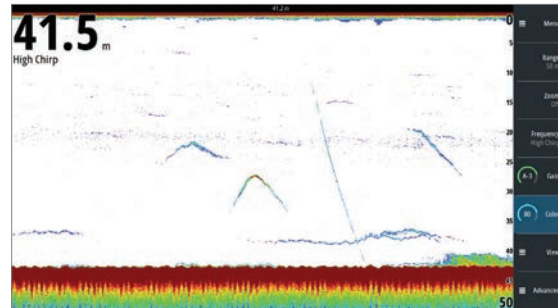
DEDICATED DISPLAYS

S2009 / S2016 Echosounders

The Simrad S2000-Series Fish Finder combines maximum vertical detail and intuitive keypad-driven operation for reliable control in all conditions.



High CHIRP separating the fish from the bottom.



Individual mid water fish. Amazing detection of a jig shown as it drops from 10m to the bottom at 41m.

MAIN FEATURES

- Dedicated fish finder with integrated Broadband Sounder™ module and CHIRP technology
- High depth penetration and ping speed and Vertical heave compensation
- 9-inch portrait or 16-inch widescreen display
- High brightness ideal for outside installation
- See clearly with White Line, White Marker, and Color Erase features
- Simple operation with 8 direct-access menu keys
- Bracket and flush mounting options (bracket included) and Ethernet, NMEA 0183 & NMEA 2000 connectivity

AUTOPILOTS & INSTRUMENTS

Autopilots

State-of-the-art electronics are incorporated into Simrad autopilot systems.



AP44

This feature-packed autopilot controller features a 4.1-inch full-colour display, intuitive keypad operation, and rotary-dial course adjustment. Add dedicated controls to your Continuum autopilot system, standalone or integrated with a Glass Bridge display system.



AP48

The AP48 Autopilot Controller is a premium dedicated control head for Continuum autopilot systems, enhanced with modern glass helm styling.

MAIN FEATURES

- Optically bonded display with wide viewing angle
- Intuitive autopilot control with simple menu
- Quick and easy rotary-dial course adjustment
- Automated turn patterns for hands-free manoeuvres
- No Drift steering holds your course against wind and tide

MAIN FEATURES

- Intuitive autopilot interface with extended keypad
- Large, heavy-duty rotary control dial for precision steering
- Continuum steering technology
- Optically bonded 4.1-inch colour display
- Ultra wide 170-degree viewing angle

DRIVEPILOT™ / OUTBOARD PILOT

Do-It-Yourself autopilot packs for fingertip control from any Simrad GO Series, NSS evo3, NSO evo2 and NSO evo3 multifunction display. Affordable automatic steering for hydraulic-steer and cable steer engines. The DrivePilot™ provides robust performance in heavier seas with included rate compass.



AUTOPILOTS & INSTRUMENTS

Instruments

Critical for real-time displays of important engine and watercraft information.



IS35

Easily visible day or night, the IS35 offers an interface to engine data, fuel efficiency, depth history and more. Connected by NMEA 2000®, the IS35 automatically detects and displays the most relevant information on a series of pre-set, customisable data pages.

Simple button-driven menus

Automatically displays data from NMEA 2000 engines and sensors

Monitor up to two engines per gauge

Stylish-low-profile design

Single-cable installation



IS42 / IS42J

The multi-purpose IS42 instrument display uses a 4.1-inch full-colour screen to clearly present data from a wide variety of NMEA 2000® connected sensors and engines. The IS42J offers engine status and performance for up to two J1939 diesel engines.

Optically bonded display with wide viewing angle and Low-profile glass helm design

Display wind, speed, depth, engine data, AIS and more

Intuitive operation with waterproof silicon keys

Add an OP12 keypad for full Simrad autopilot control



OP12

The OP12 wired remote seamlessly integrates with Simrad autopilot systems to provide intuitive mode control, course adjustments, and power steering. Pairs with the IS42, and compatible with Simrad multifunction displays.

Full autopilot control with the IS42

Waterproof silicon keys

Easy one-cable installation



PRECISION-9

Based on reliable solid-state sensor technology, the Precision-9 Compass supplies heading and rate-of-turn information to Simrad autopilot, radar and navigation systems.

Continual automatic calibration

Heading, Rate Of Turn (ROT), pitch and roll output over NMEA 2000®

Easily adjustable mounting bracket allows bulkhead or up-mast installation



WR10

Take control of your autopilot from anywhere on board with this easy to use, pocket size, wireless remote controller. The WR10 works with Simrad autopilot systems and its a perfect add on for all types of motor and fishing boats.

1 or 10 degree course changes

Waterproof Bluetooth® base station

Range of up to 30 metres



OP50

Available in portrait and landscape versions to suit any mounting location from dash to helm chair arm, this controller provides intuitive keypad and rotary-dial command of up to six displays.

Compatible with Go Series, NSS evo3, NSO evo2 or NSO evo3 multifunction displays

High-quality aluminium control dial with built-in cursor functions

Available in portrait or landscape orientation

ECHOSOUNDERS

Transducers and Modules

From all in one Active Imaging technology to the three-dimensional images of StructureScan® 3D, we offer something for every angler, on any budget.

ACTIVE IMAGING™

Perfect for pinpointing fish-holding areas like rocks, reef, weedbeds and wrecks. Active Imaging™ sonar delivers superior clarity and the highest resolution images of fish and structure at a longer range than any other structure imaging technology.



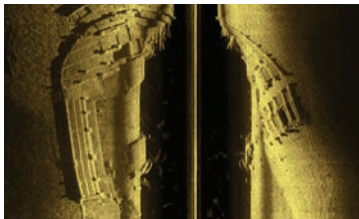
MAIN FEATURES

All of your sonar – CHIRP, SideScan and DownScan – from a single transducer

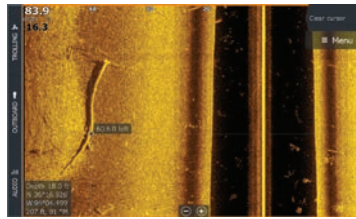
More refined detail and better range than any other imaging technology

Easier target identification with FishReveal™ Smart Target View

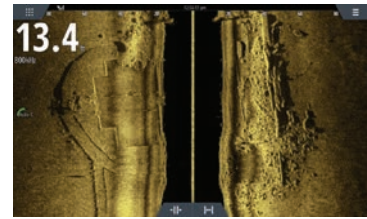
Supports Medium and High CHIRP (83/200kHz) + SideScan and DownScan (455/800kHz)



Our clearest, sharpest sonar image ever without sacrificing any range.



Quickly identify fish-holding structure like rocks, reef, weedbeds and wrecks.



Active Imaging™ doesn't sacrifice range for image clarity, allowing you to find the structure faster.

SONARHUB SOUNDER MODULE

This all-in-one sounder solution combines StructureScan® HD imaging and CHIRP sonar. SonarHub is ideal for marking fish and tracking lure action and can provide easy-to-understand views of structure and bottom detail. Offering a powerful performance advantage in any situation, SonarHub provides high-definition detail to depths of up to 1,000 metres (3,500 feet). SonarHub's StructureScan HD functionality gives boaters picture-like displays for more productive fishing, diving and search and recovery operations.



MAIN FEATURES

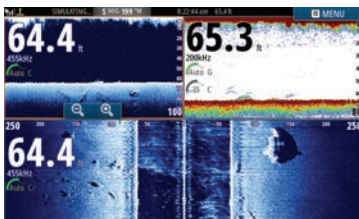
Advanced Simrad Broadband Sounder™ technology offers high performance with low noise

Simrad CHIRP technology works with traditional 50/83/200 kHz transducers

Plug-and-play compatibility with Simrad and Airmar transducers

Three Ethernet ports for connection to multiple Simrad displays

Dual ports: Connect one single-frequency or CHIRP transducer, plus one StructureScan® HD or ForwardScan™ transducer



Wreck strewn across seabed with fish sitting on parts.

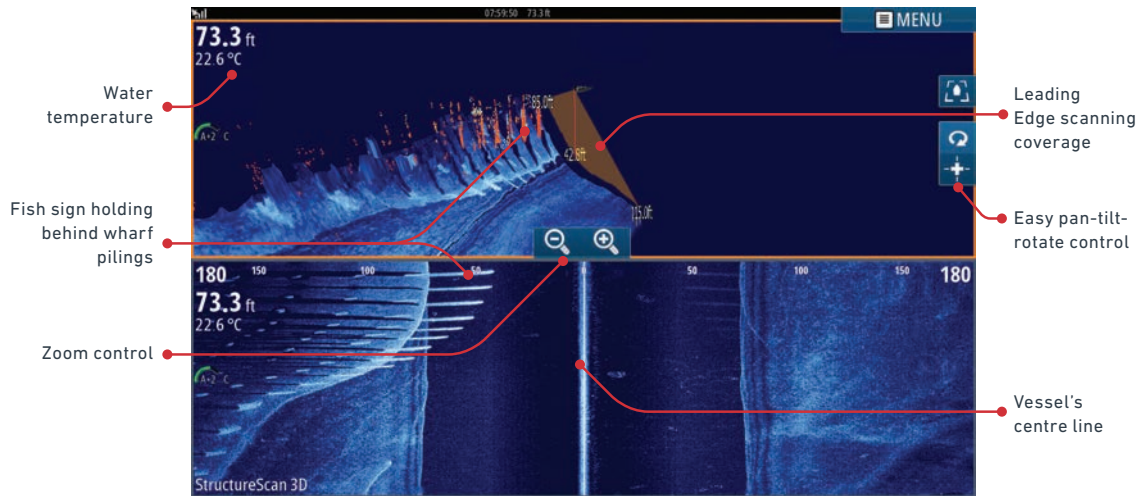


Underwater truck wreck (showing the left hand side of a SideScan view)

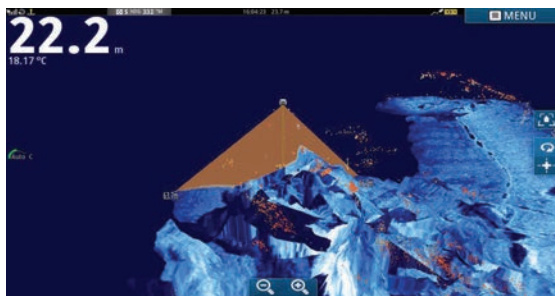
ECHOSOUNDERS

StructureScan® 3D

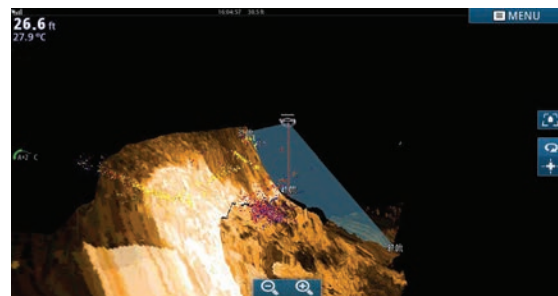
StructureScan 3D imaging scans underwater terrain and fish-holding structure to create a high-resolution, 180-degree, three-dimensional view beneath your vessel.



StructureScan3D ScanTrack highlights wharf pilings as fish-holding structure



StructureScan3D showing fish-holding around rocky structure near Nelson, New Zealand. Use Vertical Enhancement to make smaller structure appear larger and more visible.



StructureScan3D's ScanTrack view showing two distinct fish groups of varying species or size holding at different depth contours against this drop off.

STRUCTURESCAN® 3D

With this unique imaging view, anglers gain a better understanding of where fish and structure are located in relation to their vessel. StructureScan 3D imaging is available on Simrad NSS evo2, NSS evo3, NSO evo2 and NSO evo3 displays, when used in combination with the StructureScan 3D module and 3D Skimmer® transducer.



MAIN FEATURES

- Unrivaled SideScan image clarity
- High Definition (HD) and super-wide 3D scanning
- Leading Edge™ Scanning Reference
- SelectScan™ target identification
- Vertical Enhancement Control and Waypoint Overlay
- ScanTrack™ pan-tilt-rotate controls
- Enhanced SideScan Skimmer® transducer design

ECHOSOUNDERS

S5100 Echosounder Module

Whether searching deep for swordfish, mid-range bait balls or wrecks holding big targets, the Simrad S5100 Sounder upgrades your fish-finding ability.



MAIN FEATURES

Three fully independent sonar channels deliver high-resolution coverage

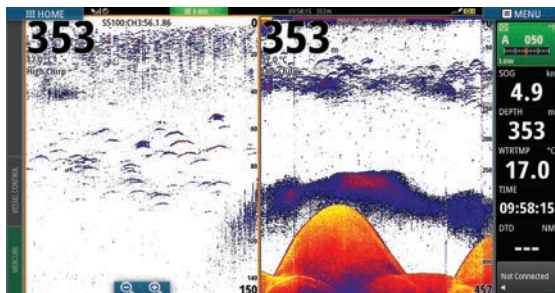
Noise-free clarity at all depth ranges

Dependable bottom-lock at faster boat speeds

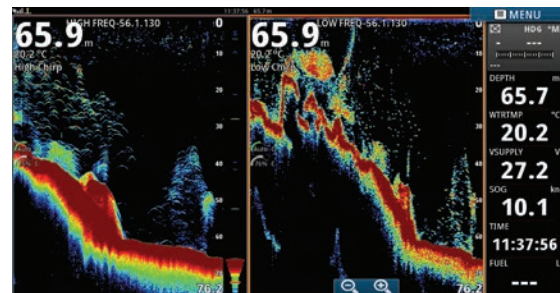
Flexible and easy transducer frequency selection to match your needs

Intelligently cover the water column in superior detail

3KW per channel to get even deeper



Pinnacles from 420m up to 300m on low frequency. Large bait school and individual fish in the mid water on both frequencies



Reef Fishing at 50M (164ft). Different ping speed between high and low chirp.

S5100 ECHOSOUNDER MODULE

This high-performance CHIRP sonar module features three fully independent channels to deliver simultaneous high-resolution coverage across multiple depth ranges, perfect for offshore sportfishing anglers.

Mix and match wide and narrow transducer beam-widths to reveal more fish, or adjust CHIRP frequencies to precisely target specific depths producing big, crisp arches for the most advanced target separation available.

ECHOSOUNDERS

Chirp and Broadband Transducers

For use with BSM-3, S5100, S2016, NSS evo3, NSS evo2, SonarHub™

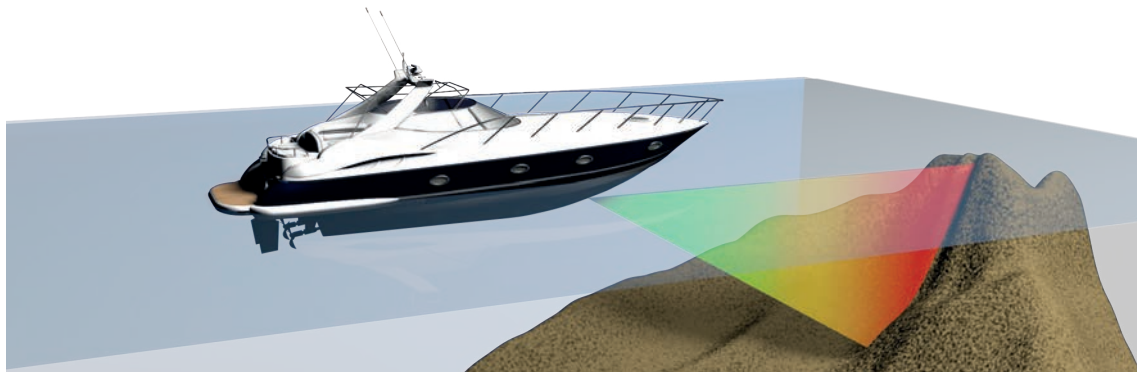
Transom Mount	Tilt °	Freq (kHz)	Power	Cone angle °	Connector	Part Number
P66		50/200	600W	45°/11°	9pin xSonic	000-13919-001
HDI SKIMMER		83/200/M/H			9pin xSonic	000-12728-001
HDI SKIMMER		50/200/L/H			9pin xSonic	000-12569-001
TM260		50/200	1kW	19°/6°	9pin xSonic	000-13904-001
TM150M		M (95-155)	300W	17°-26°	7pin	000-13944-001
*TM275LH-W		L (42-65)/H(150-250)	1kW	16°-25°/25°	9pin xSonic	000-13770-001
Through hull	Tilt °	Freq (kHz)	Power	Cone angle °	Connector	Part Number
Bronze HDI	0°	50/200/L/H		45°/11°	9pin xSonic	000-13905-001
	12°	50/200/L/H		45°/11°	9pin xSonic	000-13906-001
	20°	50/200/L/H		45°/11°	9pin xSonic	000-13907-001
P319	0°	50/200	600W	45°/12°	9pin xSonic	000-13915-001
SS60 - 20°	20° (0° & 12° available)	50/200	600W	45°/12°	9pin xSonic	000-13786-001
SS164 - 20°	20° (0° & 12° available)	50/200	1kW	20°/6°	9pin xSonic	000-13918-001
SS260		50/200	1kW	19°/6°	9pin xSonic	000-13783-001
B150M - 20°	20° (0° & 12° available)	M (95-155)	300W	17°-26°	9pin xSonic	000-13922-001
SS75M - 20°	20° (0° & 12° available)	M (80-130)	600W	16°-24°	9pin xSonic	000-13910-001
SS75H	0°	H (130-210)	600W	9°-15°	9pin xSonic	000-13911-001
	12°	H (130-210)	600W	9°-15°	9pin xSonic	000-13912-001
	20°	H (130-210)	600W	9°-15°	9pin xSonic	000-13913-001
SS175L	0°	L (40-60)	1kW	21°-32°	9pin xSonic	000-13774-001
	12°	L (40-60)	1kW	21°-32°	9pin xSonic	000-13775-001
	20°	L (40-60)	1kW	21°-32°	9pin xSonic	000-13776-001
SS175M	0°	M (85-135)	1kW	11°-16°	9pin xSonic	000-13777-001
	12°	M (85-135)	1kW	11°-16°	9pin xSonic	000-13778-001
	20°	M (85-135)	1kW	11°-16°	9pin xSonic	000-13779-001
SS175H-W	0°	H (150-250)	1kW	25°	9pin xSonic	000-13780-001
	12°	H (150-250)	1kW	25°	9pin xSonic	000-13781-001
	20°	H (150-250)	1kW	25°	9pin xSonic	000-13782-001
*B275LH-W		L (42-65)/H(150-250)	1kW	16°-25°/25°	9pin xSonic	000-13771-001
*R509LH-W		LL (28-60)/H(150-250)	3kW	9°-23°/25°	9pin xSonic	000-13773-001
In Hull/Pocket/ Chest Mount	Tilt °	Freq (kHz)	Power	Cone angle °	Connector	Part Number
P79		50/200	600W	45°/12°	9pin xSonic	000-13942-001
M260		50/200	1kW	19°/6°	9pin xSonic	000-13914-001
*CM275LH-W		L (42-65)/H(150-250)	1kW	16°-25°/25°	9pin xSonic	000-13772-001
Adaptors						Part Number
7 pin TXD plug to 9 pin MFD plug	For connecting 7 pin blue plug transducers to GO Series, NSS evo3					000-13313-001
9 pin TXD plug to 7 pin MFD plug	For connecting 9 pin xSonic transducers to NSS evo2, SonarHub, S2009, S2016, BSM-3					000-12571-001

*These are dual channel transducers, connect to S5100 or NSS evo3.

ECHOSOUNDERS

ForwardScan™ sonar

Know what lies ahead with Simrad ForwardScan.



8X

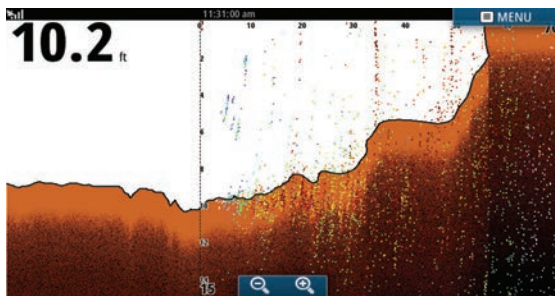
MAXIMUM FORWARD VIEW OF 8X YOUR CURRENT DEPTH

e.g. at 3m (10ft) depth, see up to 24m (80ft) ahead.

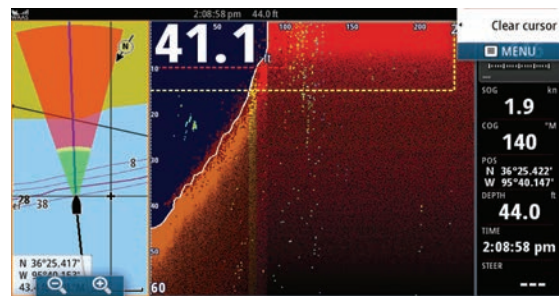
4X

NOMINAL FORWARD VIEW OF 4-5X YOUR CURRENT DEPTH

e.g. at 3m (10ft) depth, see 12-15m (40-50ft) ahead.



Bottom Colour Tracking offers a solid 2D rendering of the bottom ahead of your vessel for an uncluttered, immediately understandable view.



Heading Line View integrates ForwardScan depth data with the heading line on the navigation page of your Simrad display, with simple colour-coding to represent deep, medium and shallow water.

FORWARDSCAN™ SONAR

This forward-looking sonar provides a clear two-dimensional image of the bottom in front of your vessel, allowing you to navigate shallow or poorly-charted waters with confidence. With real-time updates and a forward-looking view of up to eight times your current depth, ForwardScan lets you relax and enjoy a safer day on the water.



MAIN FEATURES

- Clear view of what's below the surface
- Bottom Colour Tracking for simplified bottom view
- Set up custom warning zones
- Avoid running aground and Shallow depth alarm
- Built-in temperature sensor
- Through-hull fitting with stainless sleeve and Easy to install
- Simrad NSS evo3, NS0 evo2 (via SonarHub) & G05/G07/G09/G012 compatible


MARINE COMMUNICATIONS

WM-3 SiriusXM® Satellite Weather and Radio Module

Bring the power of an entire weather bureau to your boat

WM-3 WEATHER MODULE

With the WM-3 satellite receiver and a SiriusXM Marine subscription you can see real-time weather information overlaid on charts, accessible from any compatible display. Stay informed with weather radar, current and forecasted marine zones, and surface buoy reports. The SiriusXM Marine service is available in the continental United States, southern Canada and coastal waters.




MAIN FEATURES

Real-time weather information from every compatible display on board	Optionally add over 150 satellite radio channels
View high-resolution surface temperatures, coastal and Great Lakes waves, and wind data (subscription dependent)	Detailed NOAA Marine Zone Forecasts and surface buoy reports let you know the conditions offshore before you even leave the dock
NOWrad™ weather radar tracks storm cells on your chart screen	Compact antenna and simple tri-cable splitter for easy installation
Choose a subscription to match your boating style	



MARINE COMMUNICATIONS

Radio / AIS / Audio

Hear and be heard with the latest equipment from Simrad.



RS20S

Stay safe and in touch with this dependable Class D DSC approved VHF radio featuring an integrated GPS receiver.

High-visibility display with inverted night mode

Intuitive rotary dial and keypad controls

Four-button fist microphone

Class D DSC approved



RS40

Stay safe and connected with this VHF marine radio featuring a sleek design with removable fist mic, Class D DSC functionality, and built-in GPS.

Class D DSC approved VHF radio

Dual channel AIS receiver

Integrated GPS receiver

Connect up to two wireless handsets



HS40

Take remote control of your Simrad RS40 VHF radio, and enjoy the power of a fixed-mount system with the convenience of a handheld.

Wireless handset for the RS40 or RS40-B VHF radio

Handsets and RS40 work as an on-board intercom

Inductive charging with the included cradle



RS90S VHF RADIO SYSTEM

Not just a radio, the RS90S also functions as an AIS receiver, hailer, foghorn, and on-board intercom. A 30 second record and replay means you never miss anything vital, and with up to 6 handsets.

Modular system with built-in AIS receiver

Supports up to 4 wired + 2 wireless handsets

PA/Hailer and foghorn & IPX7 waterproof

30-second Record and Playback

Integrated GPS receiver



NAIS-500

Reduce your risk of collision with this fully integrated Class-B AIS transponder – essential for navigating busy shipping lanes and congested ports. The NAIS-500 networks easily with any NSS, NSO or GO display and Simrad RS VHF system.

Class-B Approved AIS Transponder

Integrates with existing Simrad MFD & VHF

NMEA 2000®, 0183® connectivity

IPX7 waterproof & Low power consumption



SONICHUB®2

The SonicHub2 system features Bluetooth® connectivity to stream music from smartphones and tablets, built-in AM/FM radio, music and video playback from USB drives, and SiriusXM® satellite radio support* – all controlled from your Simrad display.

50W x 4 amplifier & Dual USB ports

Video output via Composite RCA for playing video files from a USB drive

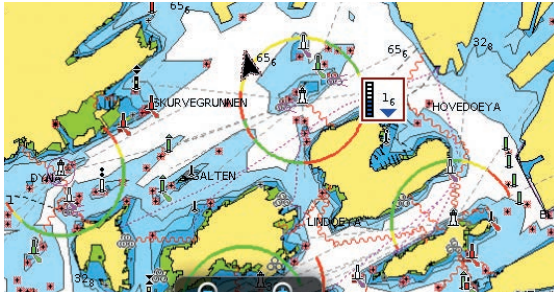
Pre-amp Zone 3 and sub-woofer outputs

Dual Stereo AUX input (AUX1, AUX2)

CARTOGRAPHY

Charts and Mapping

Offering the widest range of cartography options for anglers and boaters.



C-MAP

C-MAP serves boaters worldwide, providing cartography products and services for all types of leisure boaters, from fishermen to powerboat owners.

C-MAP MAX-N+

C-MAP MAX-N+ charts provide accurate, up-to-date information, unique features and specialized content to enhance every boating adventure.

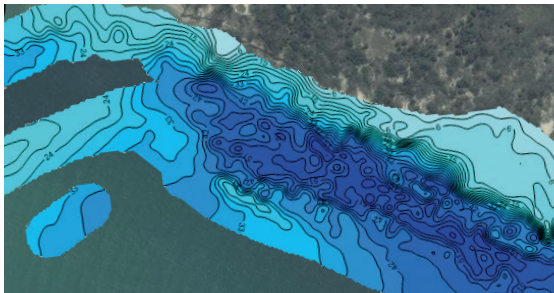
- High Resolution Bathymetric (HRB) charts for coastal areas
- Dynamic Tides and Currents & Marina Info/Port Services helps traveling boaters enjoy smooth sailing worldwide



C-MAP GENESIS LIVE

Update the mapping of your favourite fishing spot or map unmapped areas with 1/2 foot contours – in real time – on the screen of your fishfinder/chartplotter with C-MAP Genesis Live.

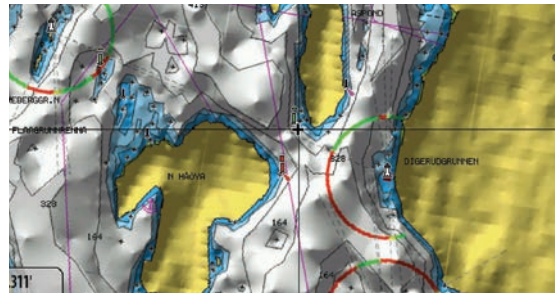
- Create custom maps with 1/2-foot contours in real-time
- Save Live mapping data directly to any SD card
- Control contour transparency and Contour intervals
- Highlight specific depth ranges with custom depth shading
- Free with compatible MFD's



C-MAP Genesis

C-MAP Genesis empowers you to create high-definition custom fishing maps with amazing detail and one-foot contours that show key fish-holding areas for greater success on the water. Find out more at genesismaps.com

- Transform your sonar logs into free custom maps
- View, Download & Contribute to online Social Map water bodies across the globe
- Customize maps with 1-, 3-, 5- or 10-foot blue-shaded contours
- Upgrade to Genesis Edge to keep maps private



Navionics®

Navionics® is the world's largest and most experienced provider in worldwide electronic marine cartography.

Navionics® PLATINUM+

All the same marine and lakes content and advanced features found in Navionics+ are augmented with 3D View, satellite overlay and panoramic photos to provide the ultimate situational awareness.

- SonarChart Live (Subscription required) allows you to create new personal 1 ft/0.5 m HD bathymetry maps that display in real time while navigating
- Dynamic 3D View allows you to customize your chart to highlight key features for a better awareness of your surroundings

CONNECTED VESSEL

CONNECTED WORLD

We live in a connected world. From our homes, to our cars, to our boats, we're surrounded by technology designed to help us achieve more, with greater ease, and in greater safety.



AUTOPILOT

Award-winning, ocean-proven autopilot systems to suit any size and type of vessel.

Dedicated control or Simrad display integration

Predefined turn patterns

Dodge function and NoDrift steering



SONICHUB®2

Bring your music on board with Bluetooth® streaming, AM/FM radio, and full Simrad Multifunction display integration.

Control your music from your Simrad display

Bluetooth streaming from smartphones and tablets

Play MP3 files from a USB drive

Connect to SiriusXM® satellite radio (US only)



HIGH SPEED GPS

Incredible position accuracy, however fast or slow you go.

16-channel 10Hz GPS antenna

Superior signal acquisition

Compact design

Easily flush mounted



INSTRUMENTS

Flexible display units for vital data, including depth, boat speed, wind speed, and more.

Highly visible full colour displays

Integrate with Simrad Multifunction display or utilise as a stand alone unit

Display data from NMEA 2000 engines and sensors



ECHOSOUNDER MODULES

Innovative sonar technologies designed for every requirement.

ForwardScan™ sonar

StructureScan® 3D imaging

Broadband Sounder with CHIRP



DSC-VHF

Versatile and rugged, with everything you need to communicate with other vessels, the shore and even individuals on board.

Handheld and modular options

Additional wireless handsets for complete mobility and intercom capability

DSC and AIS built in to some models

CONNECTED VESSEL

ENGINE DATA



Display real time engine data on your Simrad Multifunction display from your NMEA2000® compatible engine such as:

Fuel flow and Engine temperature

RPM and Battery voltage



HALO™ RADAR

See both near and far with an unprecedented mix of close and long-range detection.

Available with 3, 4 or 6-foot array

See closer than 90 metres (300 feet)

Range up to 72NM with 6-foot array

Navigate safely, monitor weather cells, and find birds with ease

InstantOn™ startup from standby, ready in 16-25 seconds from power-on



INDUSTRY WIDE INTEGRATION

Automate your onboard electronics and turn your vessel into a smart boat with integration from key industry partners.

Naviop

CZone

VesselView® by Mercury®



BROADBAND RADAR™

Confidently navigate congested waterways and harbours with exceptional close-range performance.

Range up to 36NM

Eliminates "main bang" dead zone

Efficient low-power technology

AIS

AIS

Reduce the risk of collision with this see and be seen technology.

Class B AIS transponders

Transmit your location

Track and identify AIS-equipped vessels

AIS navigational overlay



WIFI

View your Multifunction display with your smartphone, or take control with your tablet, from anywhere on board.

Download the Link app to control and backup waypoints from your MFD

Remote software upgrades and service support

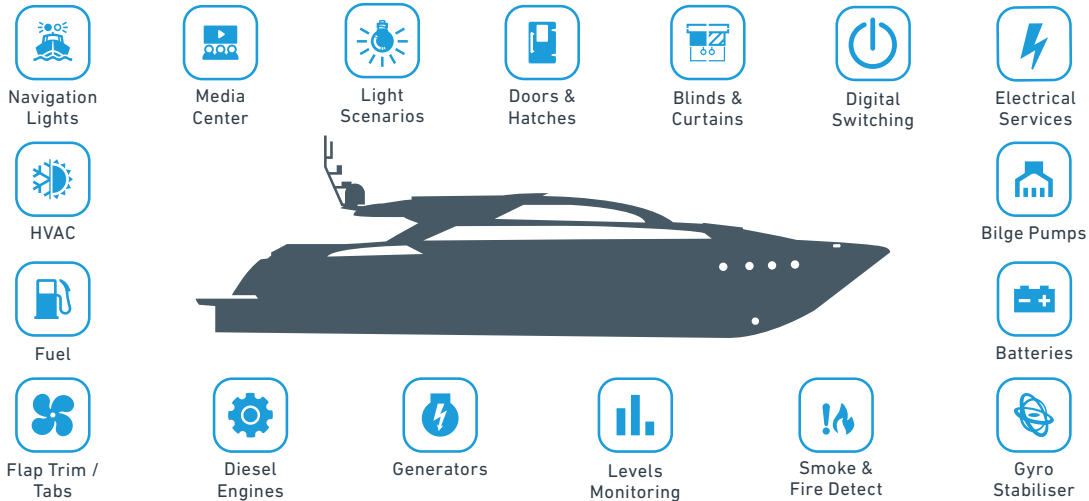
We live in a connected world. From our homes, to our cars, to our boats, we're surrounded by technology designed to help us achieve more, with greater ease, and in greater safety. Our connected vessel concept brings all of your on-board technologies and online services together behind a simple, intuitive interface. Monitor and control every aspect of your on-water experience from a variety of customisable Simrad multifunction displays.

Extend your vision and control anywhere on board using your existing smartphone or tablet. Safeguard your investment with the ability to track your boat's position online, diagnose issues remotely, and even take control of key systems from anywhere in the world. This is the reality of today's connected vessel.

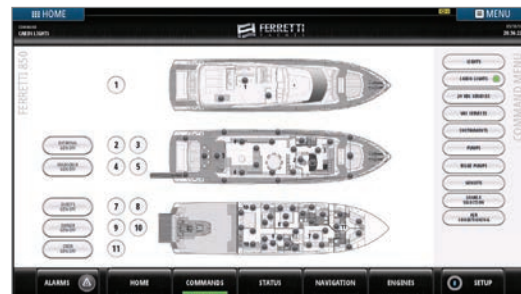
CONNECTED VESSEL

Naviop

For customised vessel-wide system monitoring and control.



Control Page



Control Page

MAIN FEATURES

Bespoke systems tailored to your vessel

Monitor and control propulsion systems

Control lighting, air conditioning, and other systems with digital switching

Monitor fuel and other tank levels

Manage on board electrical systems

Secure remote access through compatible PCs, smartphones and tablets

Enhance your boat with vessel-wide monitoring and control capabilities. Naviop extends the capabilities of selected Simrad systems to monitor and display a wealth of information. This includes engine status, performance, fuel and other tank levels, energy management for DC and AC power systems, and other data from a vast range of supported systems

and sensors. This information is presented through easy-to-read numeric and graphical displays, logically arranged on pages related to specific areas of functionality such as switching, propulsion, or tankage. Naviop is a bespoke vessel integration system that connects all vessel services with a single touch.

PART NUMBERS

Simrad Part Numbers

A resource to help you find the correct Simrad part numbers

NSO EVO3

DESCRIPTION	PART NO.
NSO EVO3 16" STARTER KIT	000-14000-001
NSO EVO3 19" STARTER KIT	000-14002-001
NSO EVO3 24" STARTER KIT	000-14004-001
NSO EVO3 16" BASIC DISPLAY	000-14001-001
NSO EVO3 19" BASIC DISPLAY	000-14003-001
NSO EVO3 24" BASIC DISPLAY	000-14005-001

NSS EVO3

DESCRIPTION	PART NO.
NSS7 evo3 with C-MAP US Enhanced Charts	000-13233-001
NSS7 evo3 + 4G Radar	000-13790-001
NSS9 evo3 with C-MAP US Enhanced Charts	000-13234-001
NSS9 evo3 + 4G Radar Bundle	000-13791-001
NSS12 evo3 with C-MAP US Enhanced Charts	000-13235-001
NSS12 evo3 + 4G Radar Bundle	000-13792-001
NSS16 evo3 with C-MAP US Enhanced Charts	000-13236-001

GO SERIES

DESCRIPTION	PART NO.
G07 XSR Active Imaging 3IN1, C-MAP PRO	000-14838-001
G07 XSR HDI Transducer, C-MAP PRO	000-14326-001
G07 XSR, No Transducer, C-MAP PRO	000-14078-001
G09 XSE Active Imaging 3IN1, C-MAP PRO	000-14840-001
G09 XSE Med/Hlgh/DownScan, C-MAP PRO	000-13211-001
G09 XSE Active Imaging 3IN1 + 4G Radar	000-14879-001
G09 XSE, No Transducer, C-MAP PRO	000-13210-001
G012 XSE Active Imaging 3IN1, C-MAP PRO	000-14834-001
G012 XSE Active Imaging 3IN1 + 4G Radar	000-14856-001
G012 XSE Active Imaging 3IN1 + 3G Radar	000-14855-001
G012 XSE, No Transducer	000-14137-001

DEDICATED DISPLAYS

DESCRIPTION	PART NO.
R2009, Radar Control Unit, 9"	000-12186-001
R3016, Radar Control Unit, 16"	000-12188-001
S2009, Echosounder, 9", No Transducer	000-12185-001
S2016, Echosounder, 16", No Transducer	000-12187-001

ECHOSOUNDERS

DESCRIPTION	PART NO.
SonarHub™ Module	000-11142-001
S5100 Sonar Module	000-13260-001
Forwardscan Transducer (XDCR kit)	000-11674-001
ForwardScan Long Stem Transducer (with sleeve and plug)	000-13284-001
StructureScan3D transducer and module	000-12395-001
StructureScan 3D Stainless Steel Thru-Hull Transducer	000-13559-001
Active Imaging 2-IN-1	000-14490-001

ECHOSOUNDERS

DESCRIPTION	PART NO.
Active Imaging 3-IN-1	000-14489-001
Active Imaging 3-IN-1 with 1.8m (6Foot) cable	000-14814-001

HALO

DESCRIPTION	PART NO.
HALO-3 Pulse Compression Radar	000-11469-001
HALO-4 Pulse Compression Radar	000-11470-001
HALO-6 Pulse Compression Radar	000-11471-001

HALO24

DESCRIPTION	PART NO.
HALO24	000-14535-001

BROADBAND RADAR

DESCRIPTION	PART NO.
Broadband 3G™ Radar	000-10420-001
Broadband 4G™ Radar	000-10421-001

VHF & AIS

DESCRIPTION	PART NO.
RS20S VHF	000-14491-001
RS40 VHF	000-14470-001
HS40 Wireless Handset	000-14475-001
RS90 BB AIS VHF RX system	000-14531-001
HS90S VHF Radio System	000-11228-001
NAIS-500 with GPS-500	000-13609-001

INSTRUMENTS

DESCRIPTION	PART NO.
IS35 Colour Instrument Display	000-13334-001
IS42 Digital Display	000-13285-001
Precision-9 Compass	000-12607-001

AUTOPILOT

DESCRIPTION	PART NO.
AP44 Rotary Pilot Head	000-13289-001
AP48 Rotary Pilot Head	000-13894-001
OP12 Autopilot Controller	000-13287-001
DrivePilot™ Hydraulic Steer Pack	000-11750-001
Outboard Pilot Hydraulic Pack	000-11748-001
Outboard Pilot Cable steer Pack	000-11749-001
OP50 Remote, Portrait	000-12364-001
WR10 Autopilot remote and base station	000-12316-001
DrivePilot™ Hydraulic Steer Pack	000-11750-001
Outboard Pilot Hydraulic Pack	000-11748-001
Outboard Pilot Cable steer Pack	000-11749-001

WEATHER AND AUDIO

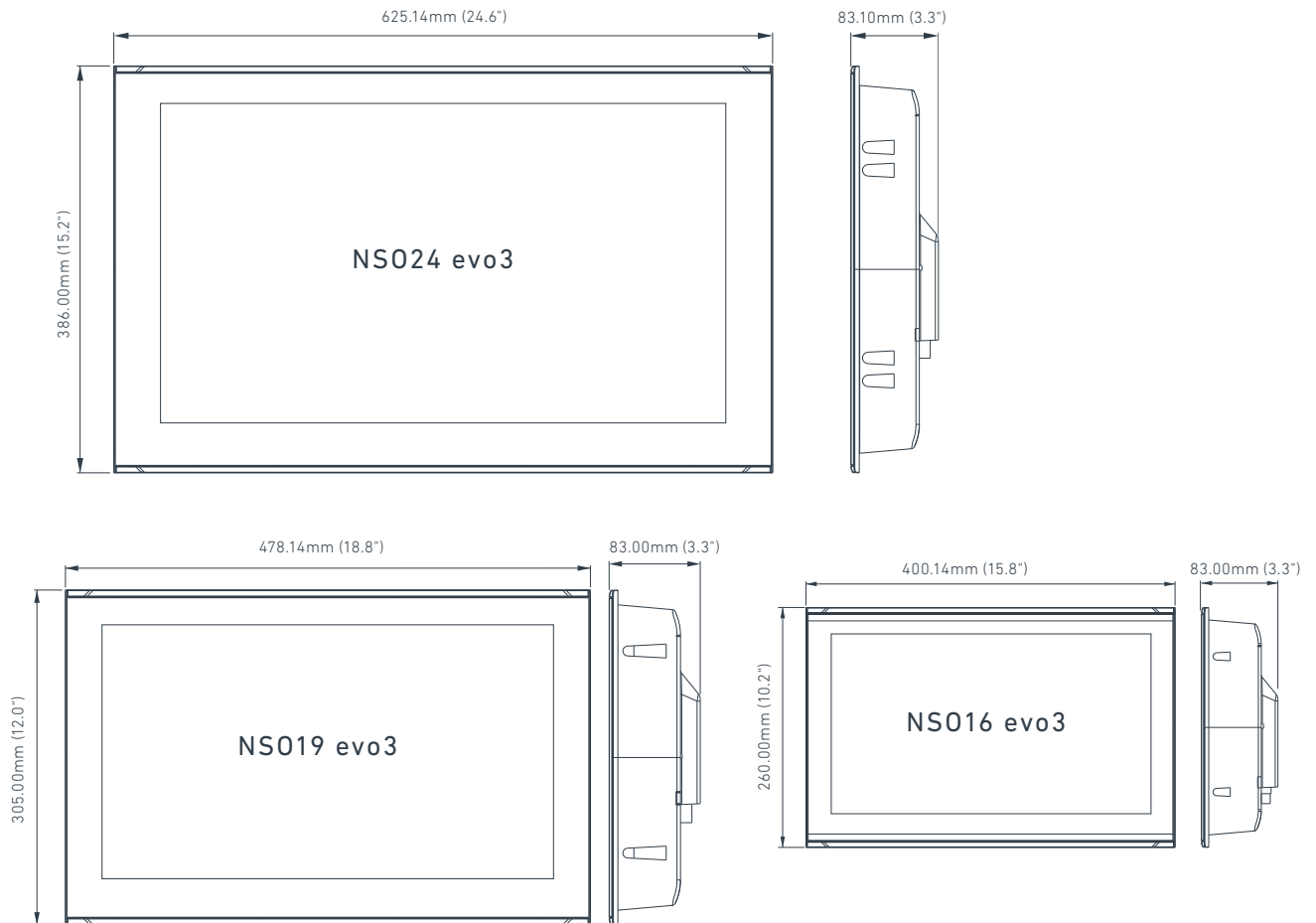
DESCRIPTION	PART NO.
SonicHub2	000-12301-001
WM-3 Weather Module	000-11076-001

For a full list of products, please visit the website for more information

PRODUCT DIMENSIONS

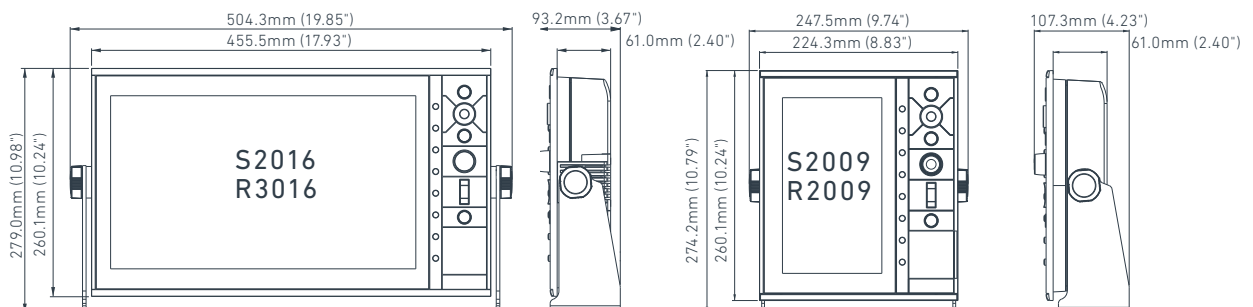
NSO EVO3

Product dimensions and characteristics that serve to identify our products.



S2009/R2009 and S2016/R3016

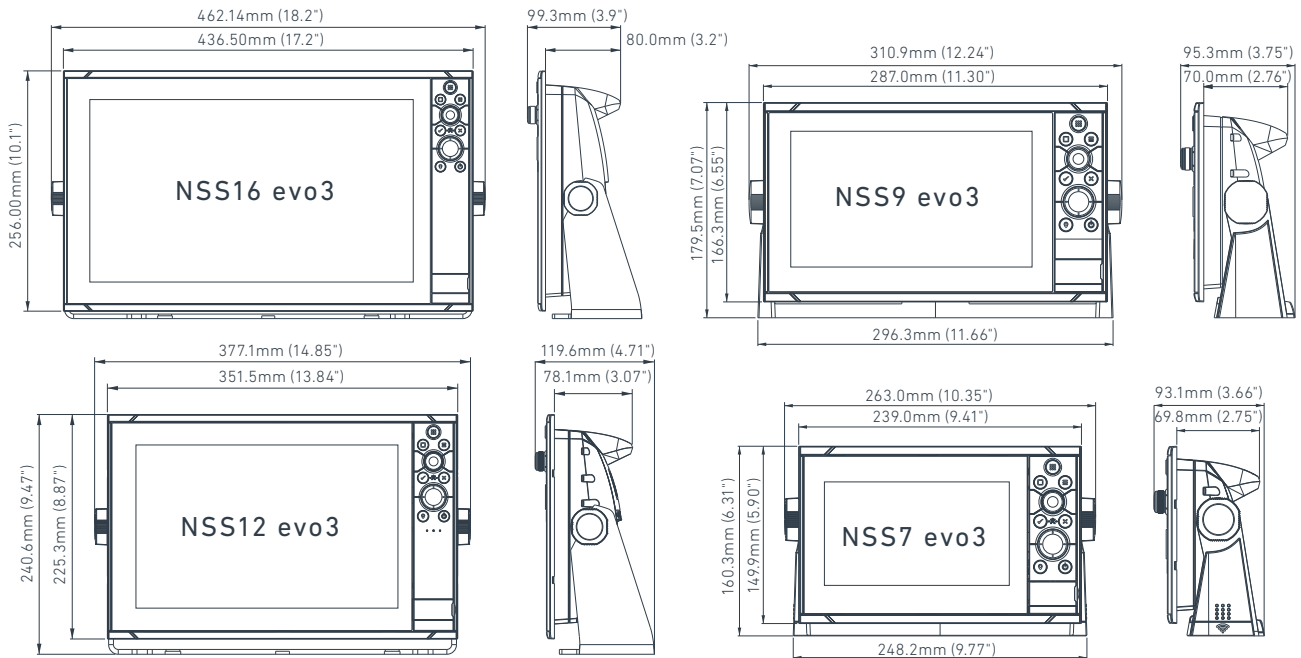
Product dimensions and characteristics that serve to identify our products.



PRODUCT DIMENSIONS

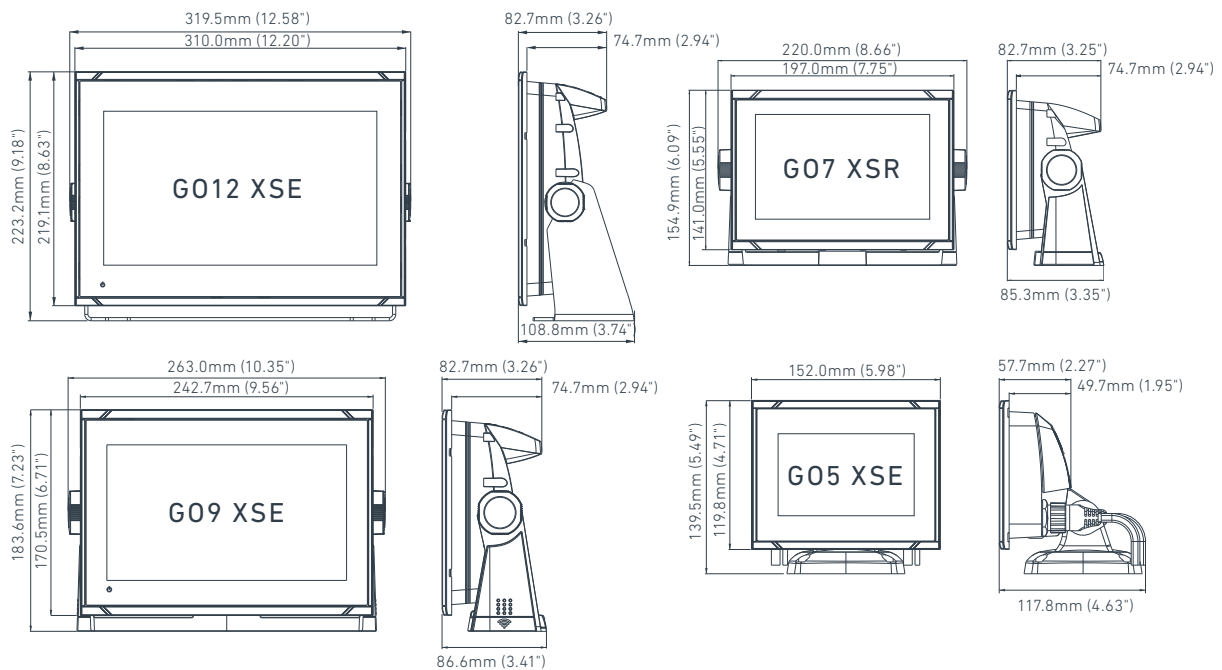
NSS EVO3

Product dimensions and characteristics that serve to identify our products.



GO Series

Product dimensions and characteristics that serve to identify our products.



SIMRAD®

SIMRAD

SERVICE & SUPPORT

Comes with:

- 2 Year Warranty
- Extended Warranty Options
- 5 Year Upgrade
- Global Service Network

+Certified Vessels:

- 2 Year Onboard Support
- 24 Hour Replacement

Sales & service

NAVICO AMERICAS

SIMRAD YACHTING
Customer Support
Tel 1.800.628.4487

Visit our website for a
list of certified dealers



Use a QR Code
reader app on your
smartphone to access
Simrad-Yachting.com