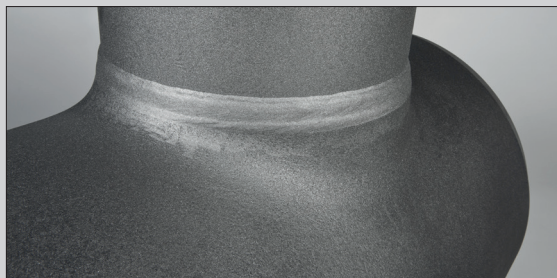

SCHUCK TEES

For divergences in pipeline systems.



SCHUCK TEES

For divergences in pipeline systems.



APPLICATIONS

Oil, gas, acid gas and water in pipeline construction and plant construction

Temperature range: -10°C to $+50^{\circ}\text{C}$

Special model: -40°C to $+150^{\circ}\text{C}$

Can be installed underground or aboveground

Nominal sizes up to DN1600

Operating pressure up to PN320

MANUFACTURING

DIN 2470 - Section 1

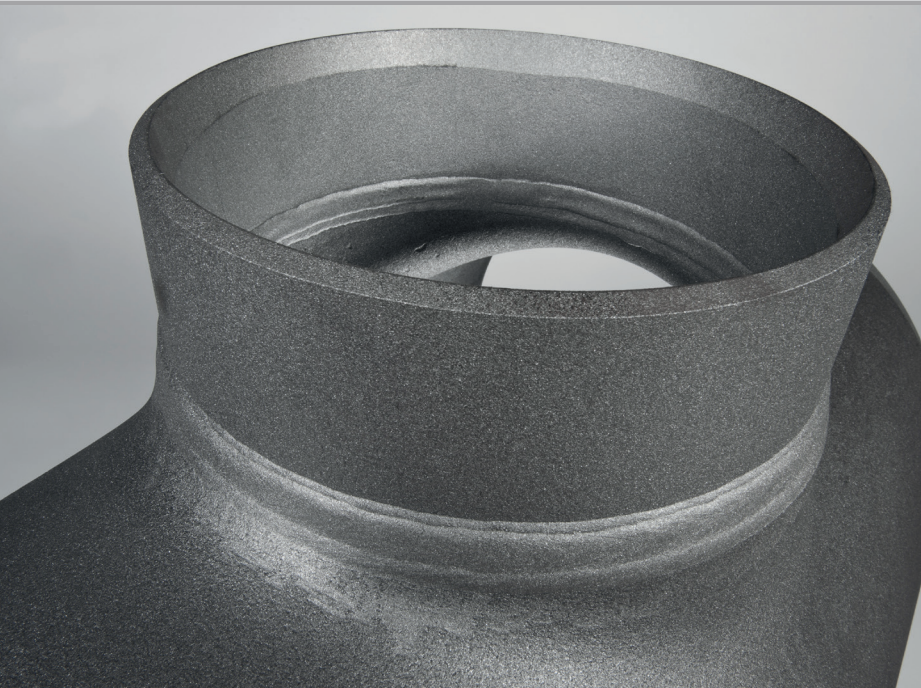
DVGW (German Association for Gas and Water) work sheet G 463

TRFL (technical regulations for pipelines)

ASME code and other international standards / specifications

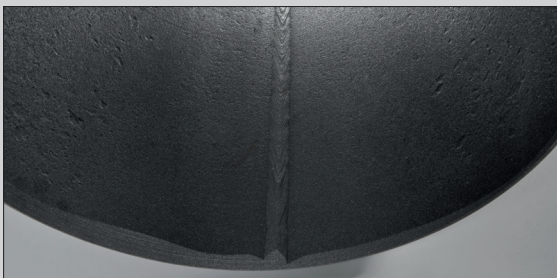
Customer's specification

Certificate as per EN 10204, 3.1 and 3.



PRODUCT FEATURES

- » Can be delivered with several divergences, if desired
- » Processing equipment and testing equipment make it possible to set up various corrosion protection systems
- » An internal lining of concrete or plastic can be applied, in order to make it possible for the item in question to be used in water lines
- » Available as a welded structure or a flared structure
- » Also available as a divided tee
- » Connections - In the form of flanges or weld-on end



DESIGN

welded nozzles

Single shaped pieces or distribution system with several extrusions / branches

Also available as a divided tee

With pig guide bars, if desired

MATERIALS

Standard materials:

≤ PN16: As per section 1 of DIN 2470

>PN16: As per G463

Pipes:

L360NB as per EN 10208

L290 NB as per EN 10208

Sheets:

P355 NH/NL1 as per EN 10028-3

P460 NH/NL1 as per EN 10028-3

Other materials that are in accordance with the norm, the specification or customer specifications can be used upon request