



# Technical specification

---

Dewatering pump BS 2670, 50 Hz



Flygt



ITT Industries





# BS 2670

## Product

Submersible pump for dewatering building yards, draining water in flooded areas, and other similar applications.

## Denomination

Product code	2670.180
Installation	S
Impeller characteristics	MT, HT

## Process data

Liquid temperature	max +40°C
Depth of immersion	max 20 m
Liquid density	max 1100 kg/m <sup>3</sup>
Strainer hole size	20 mm x 10 mm
The pH of the pumped liquid	ph 5 - 8

## Motor data

Frequency	50 Hz
Insulation class	H (+180°C)
Voltage variation	
- continuously running	max ± 5%
- intermittent running	max ± 10%
Voltage imbalance between phases	max 2%
No. of starts/hour	max 30

## Cable

SUBCAB®	4G2.5+2x1.5 mm <sup>2</sup>
	4G4 mm <sup>2</sup>
	4G4+2x1.5 mm <sup>2</sup>
	4G6+2x1.5 mm <sup>2</sup>
	4G10 mm <sup>2</sup>
	4G10+2x1.5 mm <sup>2</sup>
	4G16 mm <sup>2</sup>
	4G16+2x1.5 mm <sup>2</sup>
	7G4+2x1.5 mm <sup>2</sup>
	7G6+2x1.5 mm <sup>2</sup>

## Monitoring equipment

Thermal contacts opening temp.	+140°C
--------------------------------	--------

## Material

Impeller	High chrome alloyed white cast iron
Wear parts	Nitrile rubber, high chrome cast iron
Stator housing	Cast iron
Strainer	Stainless steel
Shaft	Stainless steel
O-rings	Nitrile rubber

## Mechanical face seals

Alternative	Inner seal	Outer seal
1	Corrosion resistant cemented carbide/ Corrosion resistant cemented carbide	Corrosion resistant cemented carbide/ Corrosion resistant cemented carbide

## Surface Treatment

The pump top is sprayed with grey paint

## Weight

See dimensional drawing.

## Option

Warm liquid version  
Starters  
Quick couplings  
Zinc anodes

## Accessories

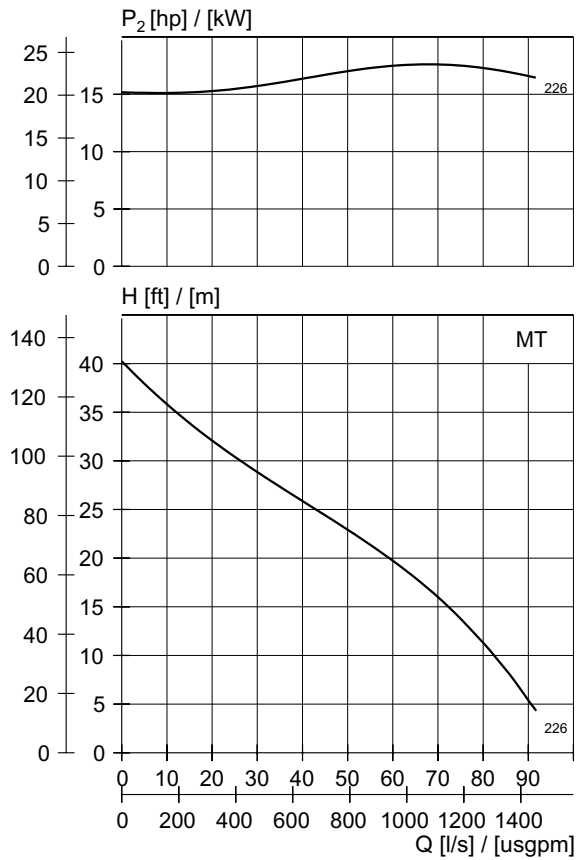
Adapters, hose connections and other mechanical accessories.  
Electrical accessories such as pump controller, control panels, monitoring relays, cables.  
See separate booklet or [www.flygt.com](http://www.flygt.com), for further information.

## MT- Motor rating and performance curve

**2670.180**

Curve/Impeller No	Rated Power, kW (hp)	Rated current, A	Starting current, A	Power factor cos $\phi$	Ex proof version available
<b>220 V, 50 Hz, 3 ~, 2890 r/min</b>					
226	18.0 (24.5)	58	355	0.90	No
<b>230 V, 50 Hz, 3 ~, 2890 r/min</b>					
226	18.0 (24.5)	56	370	0.90	No
<b>380 V, 50 Hz, 3 ~, 2890 r/min</b>					
226	18.0 (24.5)	34	239	0.90	No
<b>400 V, 50 Hz, 3 ~, 2890 r/min</b>					
226	18.0 (24.5)	32	213	0.90	No
<b>415 V, 50 Hz, 3 ~, 2890 r/min</b>					
226	18.0 (24.5)	32	222	0.90	No
<b>500 V, 50 Hz, 3 ~, 2890 r/min</b>					
226	18.0 (24.5)	26	187	0.90	No
<b>550 V, 50 Hz, 3 ~, 2890 r/min</b>					
226	18.0 (24.5)	24	162	0.90	No
<b>660 V, 50 Hz, 3 ~, 2890 r/min</b>					
226	18.0 (24.5)	20	138	0.90	No
<b>690 V, 50 Hz, 3 ~, 2890 r/min</b>					
226	18.0 (24.5)	19	123	0.90	No
<b>1000 V, 50 Hz, 3 ~, 2890 r/min</b>					
226	18.0 (24.5)	14	99	0.90	No

*Y/D starting current is approximately 1/3 of D starting current.*

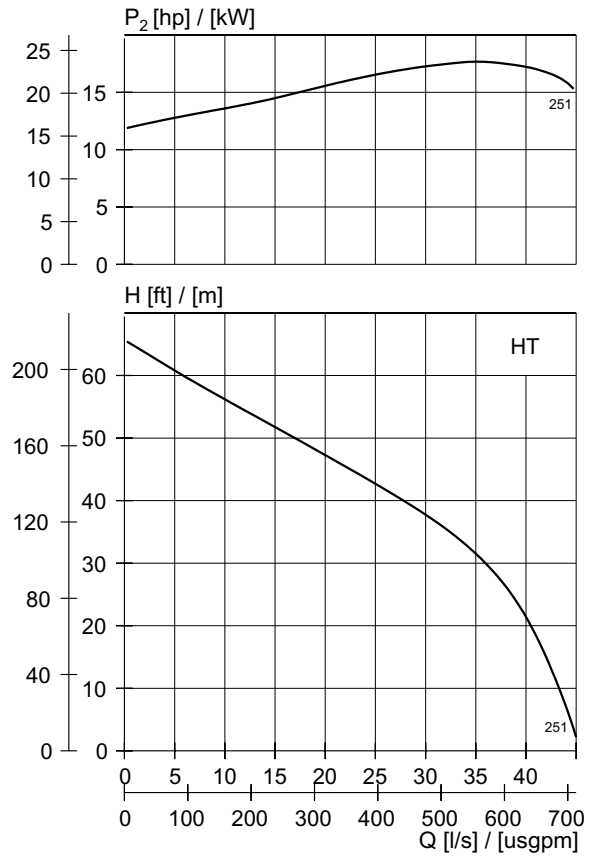


## HT- Motor rating and performance curve

**2670.180**

Curve/Impeller No	Rated Power, kW	Rated current, A	Starting current, A	Power factor $\cos \phi$	Ex proof version available
<b>220 V, 50 Hz, 3 ~, 2890 r/min</b>					
251	18.0 (24.5)	58	355	0.90	No
<b>230 V, 50 Hz, 3 ~, 2890 r/min</b>					
251	18.0 (24.5)	56	370	0.90	No
<b>380 V, 50 Hz, 3 ~, 2890 r/min</b>					
251	18.0 (24.5)	34	239	0.90	No
<b>400 V, 50 Hz, 3 ~, 2890 r/min</b>					
251	18.0 (24.5)	32	213	0.90	No
<b>415 V, 50 Hz, 3 ~, 2890 r/min</b>					
251	18.0 (24.5)	32	222	0.90	No
<b>500 V, 50 Hz, 3 ~, 2890 r/min</b>					
251	18.0 (24.5)	26	187	0.90	No
<b>550 V, 50 Hz, 3 ~, 2890 r/min</b>					
251	18.0 (24.5)	24	162	0.90	No
<b>660 V, 50 Hz, 3 ~, 2890 r/min</b>					
251	18.0 (24.5)	20	138	0.90	No
<b>690 V, 50 Hz, 3 ~, 2890 r/min</b>					
251	18.0 (24.5)	19	123	0.90	No
<b>1000 V, 50 Hz, 3 ~, 2890 r/min</b>					
251	18.0 (24.5)	14	99	0.90	No

*Y/D starting current is approximately 1/3 of D starting current.*

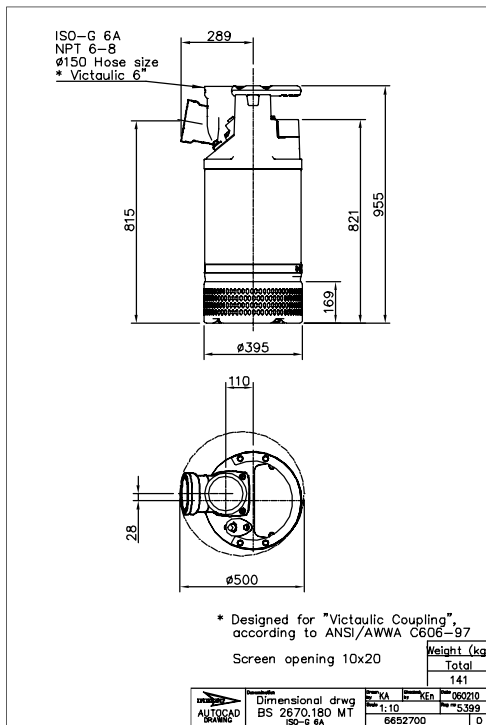


### Dimensional drawing

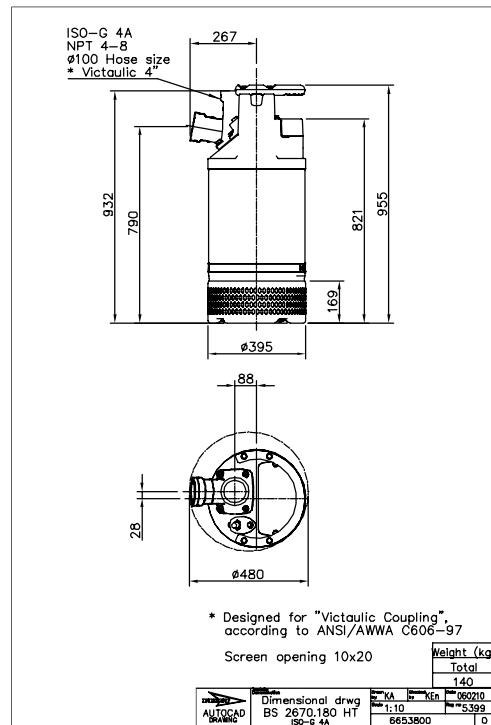
All drawings are available as Acrobat documents (.pdf) and AutoCad drawings (.dwg). Download the drawings from [www.flygt.com](http://www.flygt.com) or contact your ITT Flygt representative for more information.

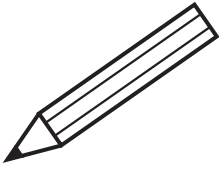
All dimensions are in mm.

#### MT, S-installation



#### HT, S-installation





---

A series of horizontal dashed lines for writing practice, starting below the pencil illustration and extending across the width of the page.



[www.flygt.com](http://www.flygt.com)