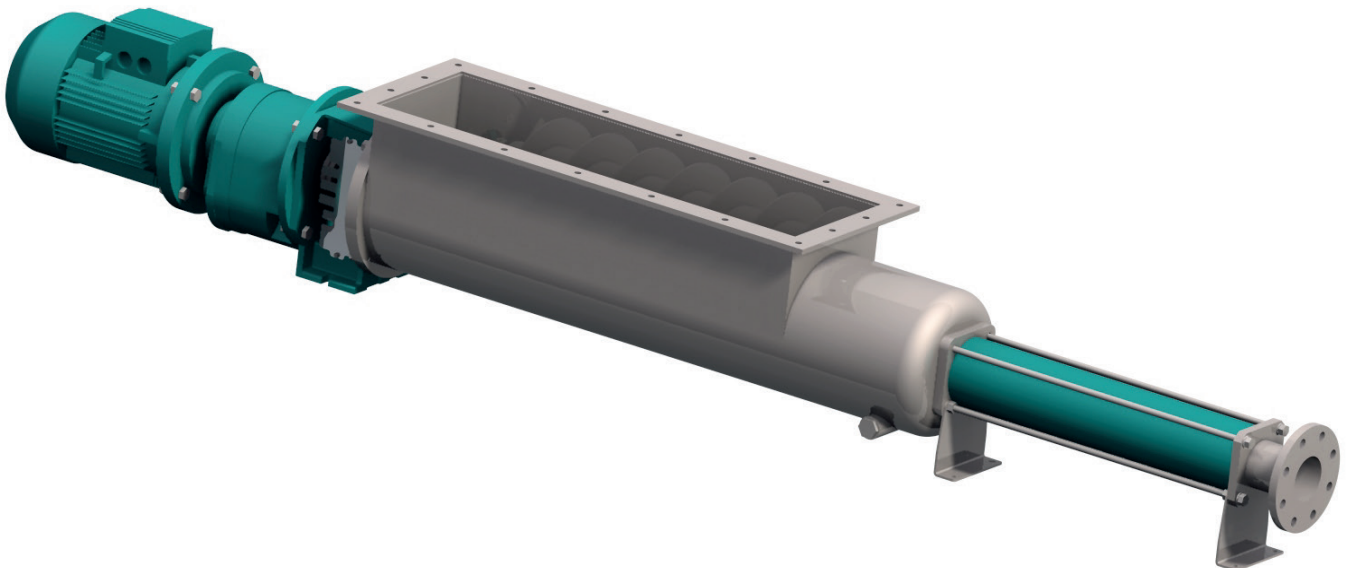




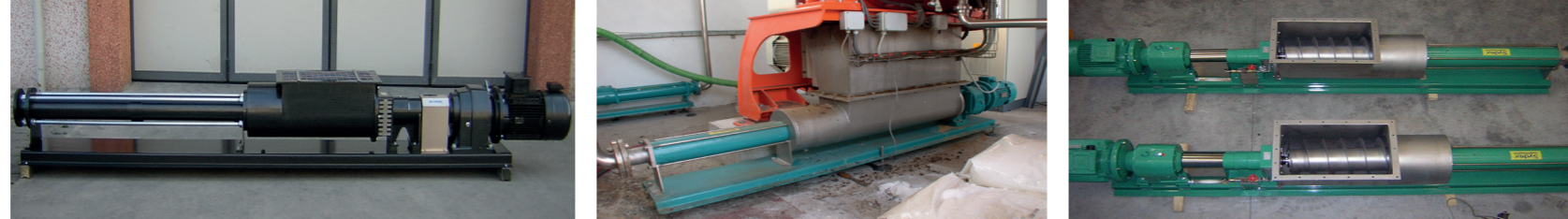
Range G - Industrial pump



PROGRESSING CAVITY PUMP
Italian Designed & Manufactured

avrorarm.ru
+7 (495) 956-62-18

Legendary Reliability



**SYDEX
PROGRESSING CAVITY PUMPS:**

Founded in 1999, Sydex has developed an extensive range of high quality and cost effective progressing cavity pumps. By being able to provide state-of-the-art-market-driven products, flexibility in providing customer-focused solutions, and unparalleled levels of service, we are experiencing rapid growth throughout the globe.

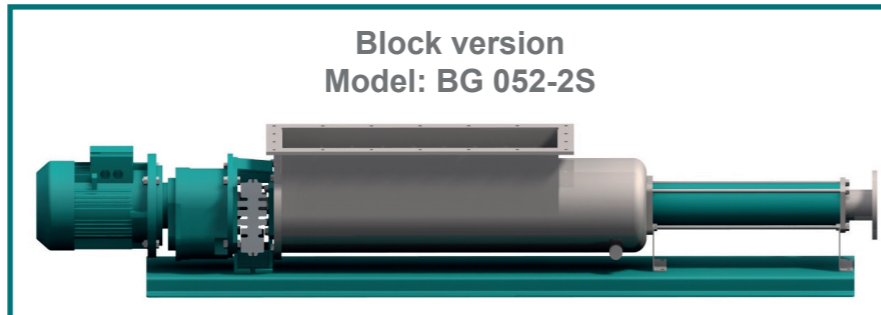
G Range:

Peculiar construction for an easier handling of very viscous matters. A wide diameter of the screw feeder and the enlarged dimensions of the hopper give you an extremely high level of performance. Effectiveness can be considered really higher than a traditional open throat style pump. The range can be produced both in block coupling version (max 6 m pedestal).

Features:

- Stable pump - low pulsation
- Delivery direction reversible
- Self-priming rate high
- ATEX version available
- Compact design and cost-efficient
- Easy maintenance and service
- Various rotor/stator geometries available
- Products with solids can be conveyed gently without damage.

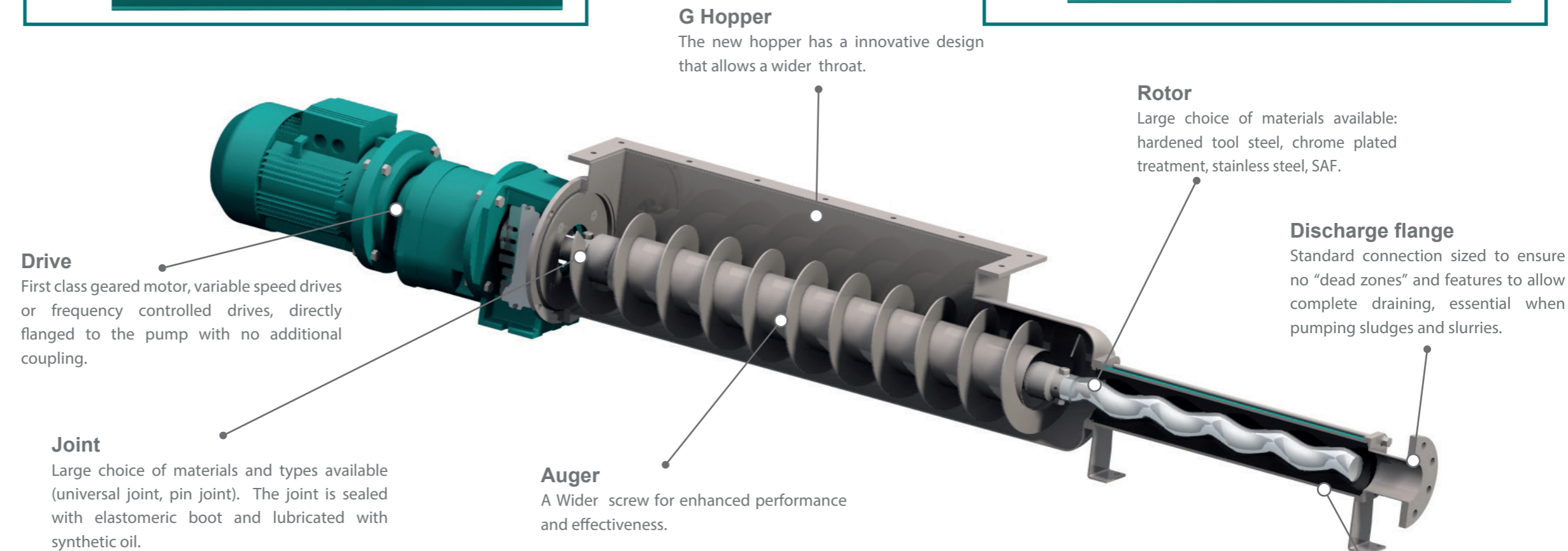
Capacity: from 30 l/h up to 300 m³/h [0.132 usgpm up to 1.320 usgpm]
Pressure: up to 48 bar [696 psig]



**Block version
Model: BG 052-2S**



**Housing bearing version
Model: LG 052-2S**



Drive
First class geared motor, variable speed drives or frequency controlled drives, directly flanged to the pump with no additional coupling.

Joint
Large choice of materials and types available (universal joint, pin joint). The joint is sealed with elastomeric boot and lubricated with synthetic oil.

Auger
A Wider screw for enhanced performance and effectiveness.

G Hopper
The new hopper has an innovative design that allows a wider throat.

Rotor
Large choice of materials available: hardened tool steel, chrome plated treatment, stainless steel, SAF.

Discharge flange
Standard connection sized to ensure no "dead zones" and features to allow complete draining, essential when pumping sludges and slurries.

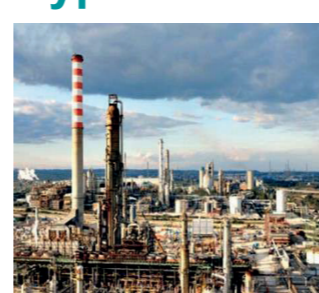
Typical fields of application



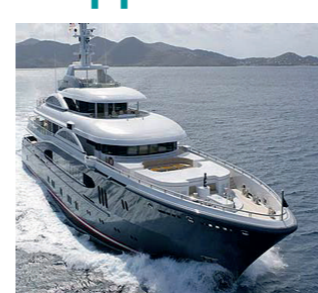
Environmental and energy
Waste water treatment, drinking water purification, renewable energies, biogas plant.



Food and pharmaceutical
Beverages, wine, sugar, dairies, breweries, fish and meat processing, bakery products.



Oil and gas
On and offshore oil production, oil transfer, petrochemicals, refineries.



Shipbuilding
Conveying bilge water, drilling mud, treatment of waste, oil water separation.

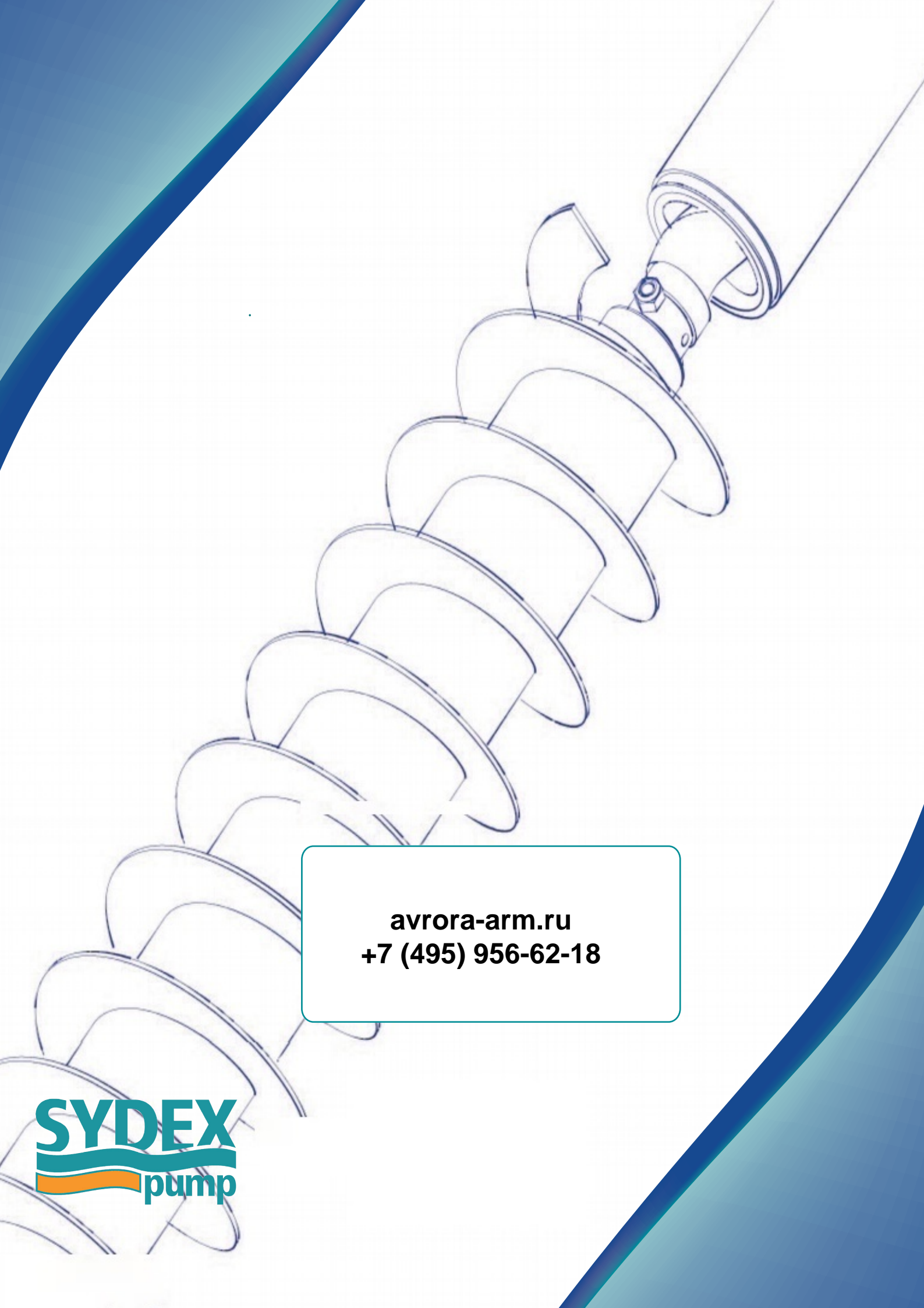


Chemical, pulp and paper
Chemical industry, paper, cellulose and textile industry, paint and varnish.



Mining
and anywhere the conveyed product is too viscous and with poor flowing properties to be pumped with other pumps.

Stator
Available in a wide range of materials (Nbr, Hypalon, Viton, etc). Gaskets are an integral part of the stator. Corrosion of the stator tube is never a problem because the pumped liquid never comes into contact with the metal.

A technical line drawing of a pump impeller assembly, showing a central shaft with a series of curved vanes. The drawing is oriented diagonally from the top right towards the bottom left. The background features blue curved accents in the top-left and bottom-right corners.

avrorarm.ru
+7 (495) 956-62-18

SYDEX
pump