

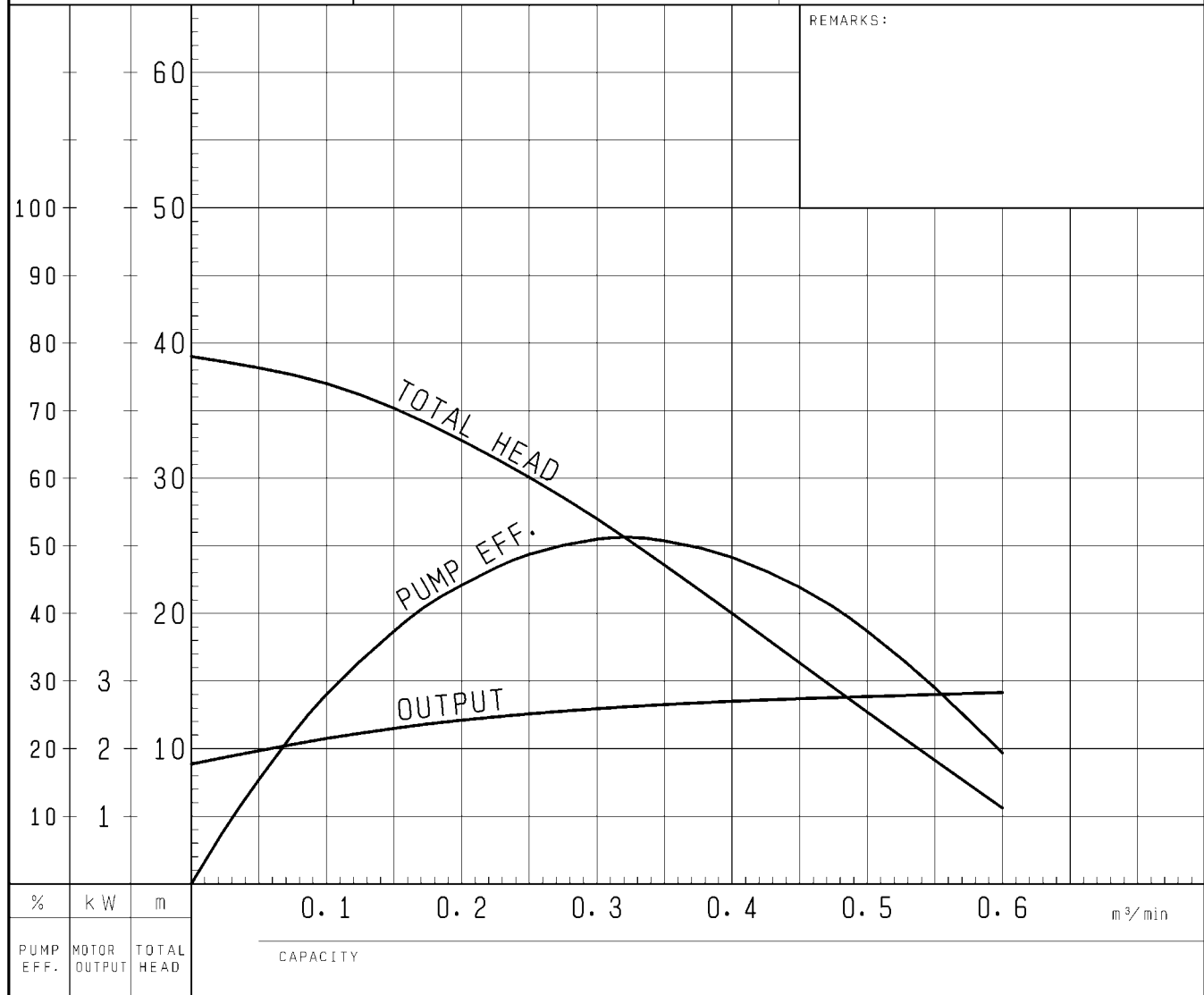
PUMP PERFORMANCE CURVES

TYPE	DEEP WELL PRE-DEWATERING SUBMERSIBLE PUMP	MODEL	LH23.0W -50	FREQUENCY	50 Hz
------	--	-------	-------------	-----------	-------

CUSTOMER'S NAME _____

EQUIPMENT TITLE _____ NO. _____

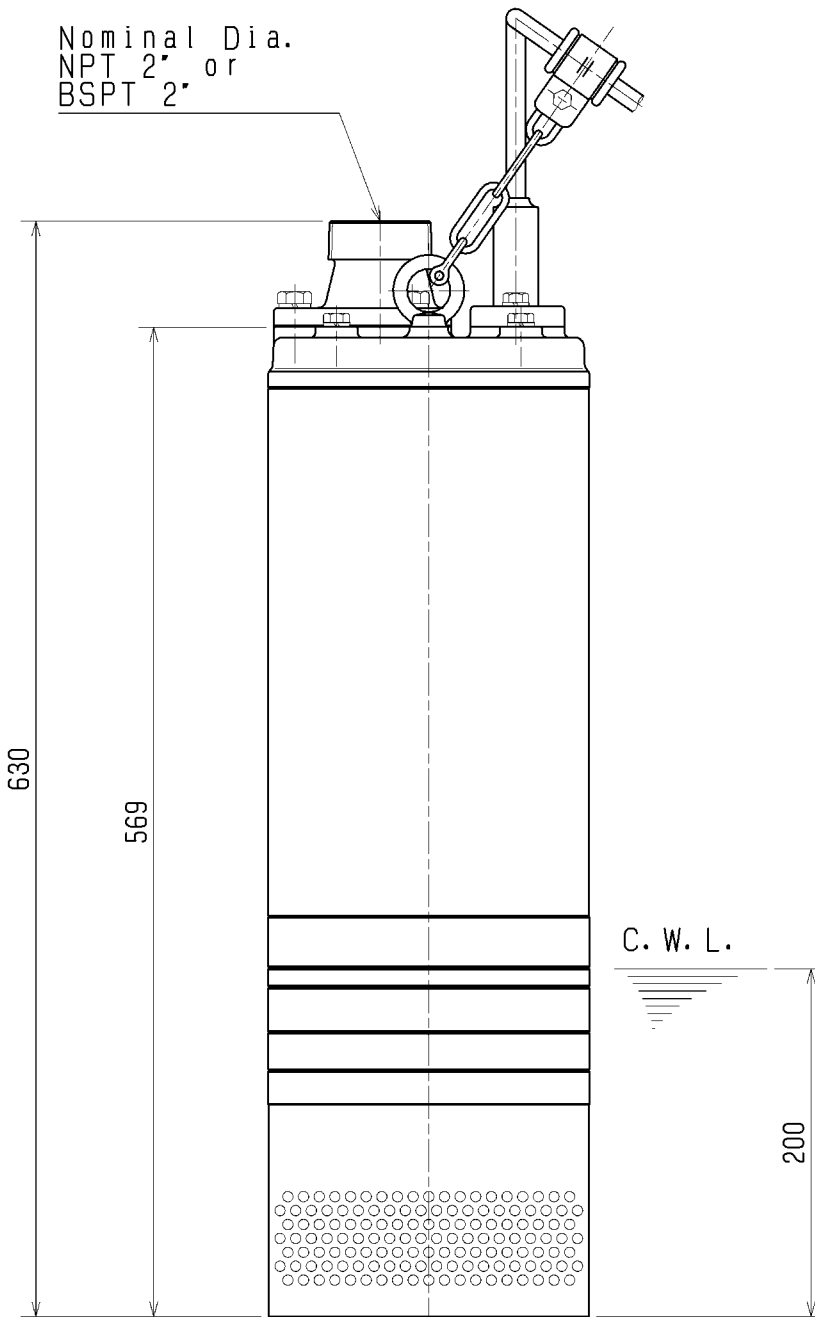
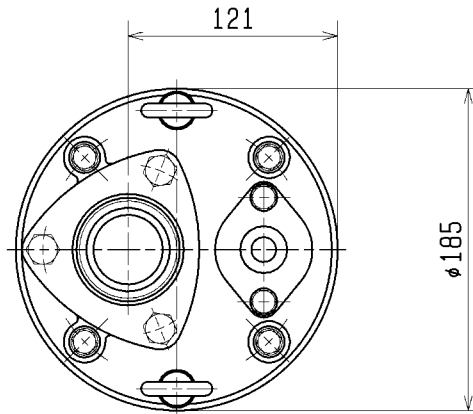
	STANDARD SPECIFICATIONS	REQUIRED SPECIFICATIONS
DISCHARGE BORE	50 mm	mm
TOTAL HEAD	32 m	m
CAPACITY	0.2 m ³ /min	m ³ /min
MOTOR OUTPUT	3.0 kW	kW
PHASE x VOLTAGE	3 φ x V	φ x V
CURRENT	A	A
POLES / REVOLUTION	2 P / S. S. 3000 min ⁻¹	P / min ⁻¹
STARTING METHOD	DIRECT ON LINE	
INSULATION CLASS	F	



DIMENSION DRAWING		No.	No. A-12289-1
TYPE	DEEP WELL PRE-DEWATERING SUBMERSIBLE PUMP	MODEL	LH23.0W -50/60

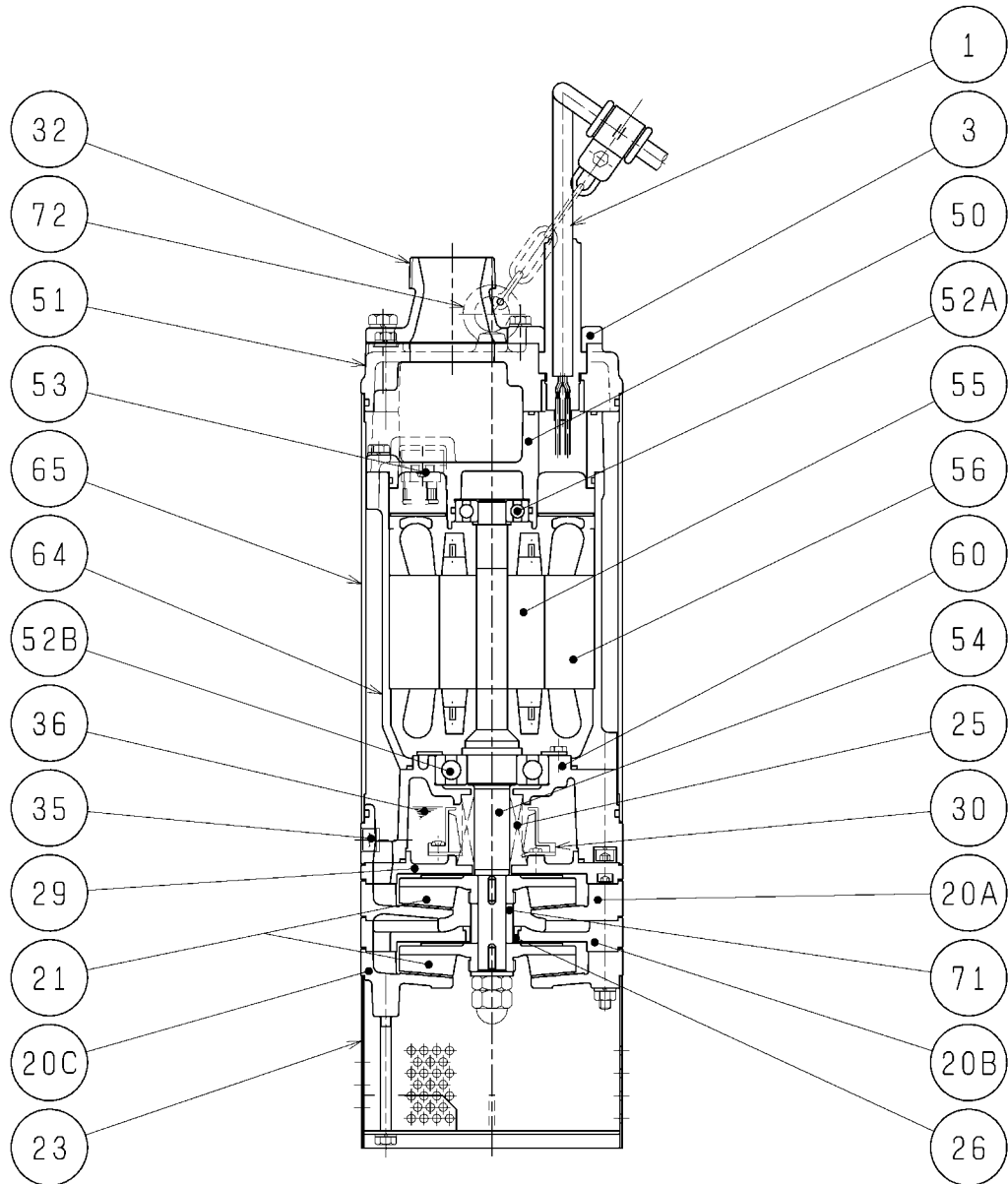
Approximate Weight (※)
46kg

※excluding cable



C. W. L. :Continuous Running Water Level

SECTIONAL DRAWING		No.	No.	A-12293-2
TYPE	DEEP WELL PRE-DEWATERING SUBMERSIBLE PUMP	MODEL	LH23.0W -50/60	



REQ. SPECIFICATION	

※ the wetted part

No.	DESCRIPTION	QTY	MATERIAL / NOTE	No.	DESCRIPTION	QTY	MATERIAL / NOTE
1	Cable	1	Chloroprene Sheath	50	Motor Bracket	1	Gray Iron Casting
3	Gland	1	Gray Iron Casting	51	Head Cover	1	Gray Iron Casting
20A	Upper Pump Casing	1	Ductile Iron Casting	52A	Upper Bearing	1	6304ZC3
20B	Middle Pump Casing	1	Ductile Iron Casting	52B	Lower Bearing	1	6307ZC3
20C	Lower Pump Casing	1	Ductile Iron Casting	53	Motor Protector	1	
21	Impeller	2	Chromium Iron Casting	54	Shaft	1	Stainless Steel 420J2(※)
23	Strainer Stand	1	Steel Plate	55	Rotor	1	
25	Mechanical Seal	1	H-25T	56	Stator	1	
26	Labyrinth Ring	1	Stainless Steel 304	60	Bearing Housing	1	Gray Iron Casting
29	Oil Casing	1	Ductile Iron Casting	64	Motor Frame	1	Gray Iron Casting
30	Oil Lifter	1	Plastic	65	Outer Cover	1	Steel Plate
32	Hose Coupling	1	Ductile Iron Casting	71	Shaft Sleeve	1	Stainless Steel 403
35	Oil Plug	1	Stainless Steel 304	72	Eye Bolt	2	Stainless Steel 304
36	Lubricant		Turbine Oil (ISO VG32)				